

## BACHELOR OF APPLIED ARTS (VISUAL ARTS AND DESIGN)

This programme offers an interdisciplinary approach with opportunities to experiment with a wide range of traditional and digital media to develop individual work. Gain skills in design, jewellery, painting, photography, printmaking and textiles.

## ENROL NOW!



Specialise in a chosen media and create a body of work

### PROGRAMME INFORMATION

Study Visual Arts and Design at Whitireia, a tertiary institute that has been at the leading edge of the creative field for more than 25 years. This programme draws on a student's own origins to develop technical and conceptual excellence.

Students will explore a wide range of visual arts media such as painting, printmaking, textile, jewellery or graphic design in the first year of this programme. In year two, students may specialise in a chosen media and in year three, a major body of work is created.

### MODULES FOR THIS PROGRAMME INCLUDE:

#### Year one

- > Body of work
- > Contextual practice
- > Contextual studies
- > Drawing and design
- > Exhibition design
- > Illustration
- > Photography
- > Packaging design
- > Publication design
- > Research and presentation

#### Year two

- > Body of work
- > Branding
- > Contextual practice
- > Contextual studies
- > Creative enterprise (business)
- > Drawing and design
- > Exhibition design
- > Publication
- > Web and interactive design



[www.whitireia.ac.nz](http://www.whitireia.ac.nz)

+64 9 3794666  
+64 4 237 3100  
[auckland@whitireia.ac.nz](mailto:auckland@whitireia.ac.nz)  
[international@whitireia.ac.nz](mailto:international@whitireia.ac.nz)



PORIRUA  
KĀPITI  
WELLINGTON  
AUCKLAND

## ADDITIONAL INFORMATION



### Year three

- > Body of work
- > Creative enterprise (business)
- > Elective
- > Research and presentation

The body of work in year three consolidates all learning in this programme into a presentation, publication or exhibition to an external audience.

### CAREER OPPORTUNITIES

Graduates will have the required skills to pursue a career as a self-employed professional artist, illustrator or graphic designer (print or web), or work within a gallery, museum or the design industries. Graduates from this programme appear in almost every aspect of New Zealand creative life.

### FURTHER STUDY OPTIONS

Graduates can apply to enrol in the Graduate Certificate in Applied Arts, the Graduate Diploma in Applied Arts at Whitireia or enrol in teacher training study.

### QUALIFICATION

Graduates gain the Bachelor of Applied Arts (Visual Arts and Design). Graduates can also exit with the following qualifications at level 5 and 6:

- > Diploma in Jewellery Design
- > Diploma in Digital Design
- > Diploma in Digital Design and Multimedia
- > Diploma in Visual Arts

### LOCATION

Porirua campus, Wineera Drive, Porirua City

### START DATE

17 February

### DURATION

Three years

### LEVEL

7

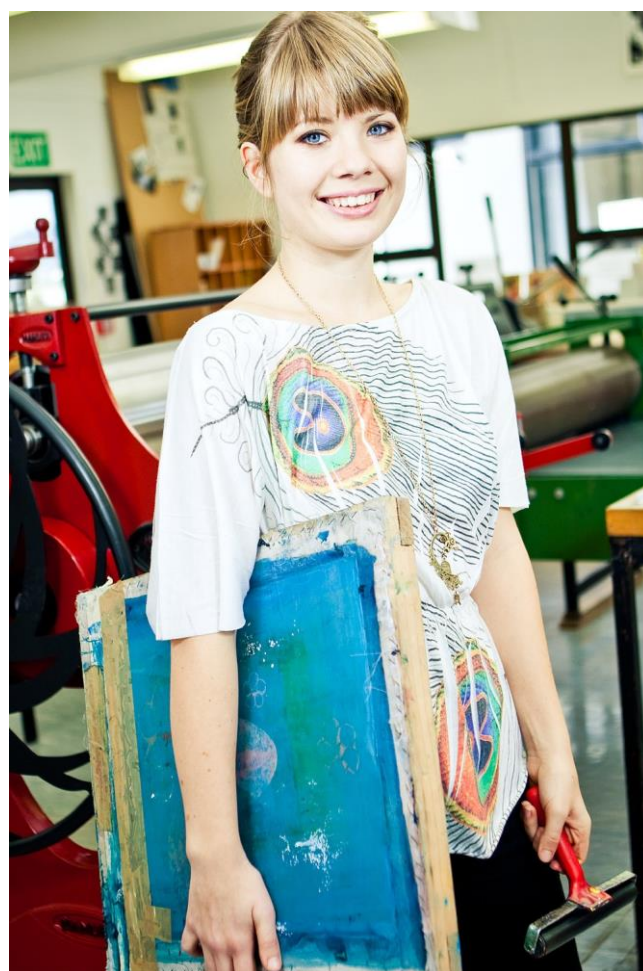
### FEES(NZ\$)

\$19,950 per year

### ENTRY REQUIREMENTS

Successful completion of qualification equivalent to New Zealand Yr. 13

IELTS 6.0 or equivalent (no band lower than 5.5)



# ENROL NOW!