



**Brunel**  
University  
London

Pathway  
College

2

**Discover  
Brunel**

2

2

**INTERNATIONAL**

**PATHWAY GUIDE**

# CONTENTS

## **WELCOME 1**

## **YOUR PATHWAY TO A DEGREE 3**

The journey to enrolment	4
Your student life on campus	5
What our students say	6
Why study at Brunel University London?	7
How you'll learn	12
Supporting your study	13
Supporting your professional development	16

## **LIFE ON OUR LONDON CAMPUS 19**

Our London campus	20
Your new home	22
Students' Union	24
Your wellbeing	25

## **PROGRAMME & INTAKE MATRIX 26**

## **UNDERGRADUATE PATHWAYS 30**

Business	31
Computer Science	32
Design	33
Economics and Finance	34
Engineering	35
Humanities, Social Sciences and Education	36
Law	37
Life Sciences	38
Sport, Health and Exercise Sciences	39

## **POSTGRADUATE PATHWAYS 40**

Business	41
Computer Science	42
Design	43
Engineering	44
English	45
Environmental Sciences	46
Law	47

## **NAVITAS BURSARIES AND SCHOLARSHIPS 48**

# WELCOME

## A university for a changing world.

Founded in 1966, Brunel is a leading technology university renowned for its education and research and its spirit of innovation and entrepreneurship. It is based on a single leafy campus with outstanding sports facilities, easy access to central London and a friendly, vibrant and striking international community.

Our education is designed to equip students with the academic knowledge and personal skills they need to forge successful and rewarding careers. You will learn from academic who are leaders in their field and combine rigorous academic study with opportunities to apply your knowledge to real-world issues.

Your time at Brunel will be exciting, challenging, inspiring and rewarding and will help to shape your future career. We look forward to welcoming you here.



We are proud to offer programmes giving you opportunities to study exceptional courses at Brunel University London. From Engineering and Business to Arts and Humanities, Life Sciences to the Social Sciences, we have helped over 4,000 students progress onto outstanding undergraduate and Master's programmes on this vibrant and diverse London campus.

Our students find their tutors supportive, they receive outstanding student service, and they love the Brunel vibe.

We would be delighted to tell you more.

**Amol Gurung**  
College Director/Principal,  
Brunel University London Pathway College



# Your future starts here

Over 4,000 Brunel University London Pathway College students have progressed on to graduating with a full Bachelor's or Master's degree from Brunel University London.

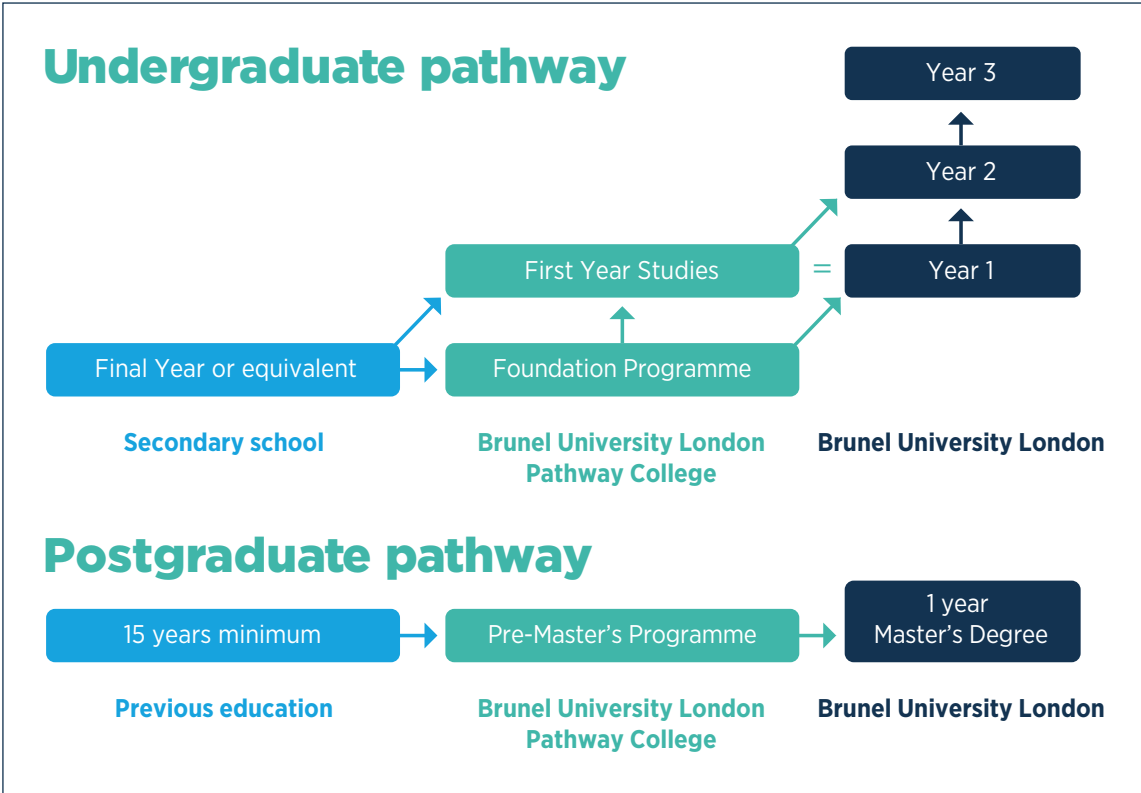
Students at the College are taught in smaller classes with additional help and support, providing the perfect transition to the next stage of studies at Brunel University London.

Brunel University London's graduates are highly sought after by employers and many now enjoy successful careers at some of the world's top companies, including British Airways, IBM, Lloyds TSB, Microsoft, Morgan Stanley, Nissan, PricewaterhouseCoopers, Warner Bros and many more.

# YOUR PATHWAY TO A DEGREE

**Brunel University London Pathway College is your pathway to a degree at Brunel University London. The College is part of the global Navitas Group, an internationally recognised education provider with the knowledge and resources of staff in more than 120 colleges and campuses worldwide.**

The College is proud of its many graduates who have completed Brunel University London degrees and embarked on successful careers in some of the world's top companies. We now look forward to providing you with a high-quality education that will help you achieve your own career objectives and personal goals.



We provide a joint CAS which covers the duration of the Brunel University London Pathway College programme and the Brunel University London degree.

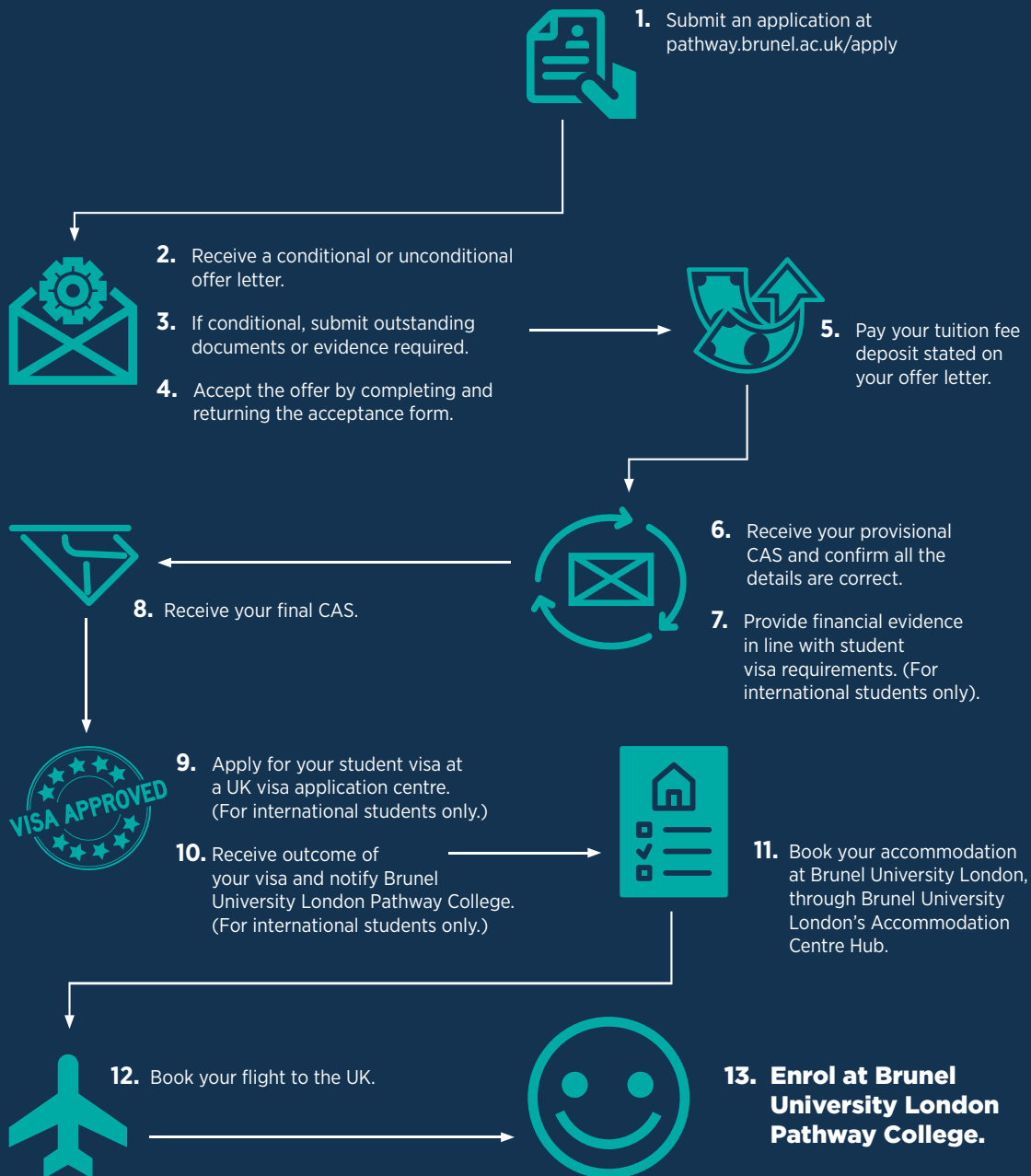


*Studying at the College has been a delightful experience. I have great friends living on campus with me and the lecturers and staff always help me to feel confident and achieve all my goals.*

**Batuhan, Turkey  
Computer Science BSc (Hons)**

# THE JOURNEY TO ENROLMENT

Applying to study overseas can be complicated, so we've created a handy guide to help you through the process. If you have questions at any stage of your application, please email: [info@pathway.brunel.ac.uk](mailto:info@pathway.brunel.ac.uk)



# YOUR STUDENT LIFE ON CAMPUS

**Brunel University London Pathway College will support you on the journey to becoming an independent learner. A range of support services and programmes are available to ensure you achieve your academic potential while developing personally and maintaining a balanced lifestyle. The services and programmes outlined below are available to all students and are provided at no additional cost.**

Brunel University London Pathway College is dedicated to providing a rewarding and fulfilling student experience and we encourage you to use all the support services available and to contact our friendly staff for advice and assistance whenever you need it. We also have a Virtual Reception that take place during the week to allow students to have their queries answered via zoom. Staff at the College are always happy to help with any difficulties or queries you may have, no matter how big or small.

## Full orientation programme

Brunel University London Pathway College offers a full orientation and enrolment programme to new students, ensuring you are fully prepared for your new life in London. Some of the things that may seem easy at home can prove a little different in the UK, so the College's orientation programme will assist with getting you settled in and will enable you to begin your studies in comfort. Assistance with opening a bank account, getting a mobile phone and advice on where to get specific foods will be offered, as well as a whole range of other information that will help you adjust quickly to life in the UK. In addition, the enrolment programme will give you the opportunity to meet your new classmates and discover more about the social activities available.

## Academic assistance

Brunel University London Pathway College's main purpose is for you to have an excellent beginning to your university studies, and the dedicated team of academic and student support staff will ensure that you have all the tools at your disposal to enable you to achieve your full potential. In supporting your transition to university life, we also run a free online programme; The Launchpad Programme which covers essential study skills sessions to help you feel confident, comfortable, and connected for when you start your first term. During your studies we also run our Next Generation Programme which helps you build employability skills to enter the working world. The College's student services team is there to assist you and provide personalised academic support, to help you keep on track with your studies.

## Supportive learning environment

As a Brunel University London Pathway College student you will enjoy smaller class sizes and one-to-one tutorial sessions. This will allow you to successfully bridge the gap between your previous studies and Brunel, providing you with the skills, knowledge and expertise that will enable you to excel at your university studies and ultimately graduate with an internationally recognised Bachelor's or Master's degree from Brunel University London.

## 24/7 contact

Brunel University London Pathway College is located on Brunel University London's campus, a secure and safe student environment. An experienced student services team is available throughout the day at the College for any help or advice you may need. Out of office hours, 24 hours a day, it is possible to call a dedicated College emergency phone in case of any urgent issues.

## Social activities at Brunel University London Pathway College

Although you will be at the College primarily for the purposes of academic study, it is still possible to involve yourself in an extensive and varied social life. The College runs a range of extra-curricular activities, including sports teams, shopping trips and sightseeing tours around the UK and, with everything that the University and London have to offer, you will certainly find something of interest for when you are not studying.

## Student Representative Group

Students at Brunel University London Pathway College play an important role in the direction of the College, and the Student Representative Group enables you, the student, to represent your peers. Regular meetings between staff and student representatives are held and provide the opportunity for the student voice to be heard, contributing to the future of your experience.

## Study accredited modules

Brunel University London Pathway College's courses and modules are designed in partnership with the University's academic staff, meaning that from day one you will be gaining knowledge and skills that will give you a distinct advantage when you have completed your studies at the College and progressed on to Brunel University London.

# WHY STUDY AT

# BRUNEL UNIVERSITY LONDON?



**Brunel University London is located in Greater London. London was voted the best city in the world for university students.**

(QS Best Student Cities 2022)

**Brunel University London offers easy access to Heathrow Airport (20 mins away) and Central London (40 mins away).**



**Brunel University London is a self-contained campus university, with everything you need in walking distance.**



**You'll find elite sports facilities, many food and drink options, a Students' Union, a Medical Centre/ Pharmacy, and Student Services and welfare support.**



**There are over 100 societies to join.**



**The on-campus Job Shop can help you find part-time work opportunities on and off campus.**



**Guaranteed accommodation**



**Over 4,500 rooms on campus**



**Self-catered accommodation**



*The staff and students are very helpful. Studying at the College and completing my degree at Brunel will surely help me reach my dreams of becoming a successful Aerospace Engineer.*

**Suprim, from Nepal  
Foundation in Engineering**





### **Top third of Universities worldwide**

(QS World University Rankings 2022)

### **Top 25 in the world on the International Outlook Indicator**

(Times Higher Education World University Rankings 2022)



### **Top 100 university for sports**

(QS World Rankings by Subject 2021)



### **Brunel University London's Professional Development Centre was voted 5th Best Career Service in the UK**

(Student Hut Survey 2019)



### **Over 95% of undergraduate courses offer a work placement**



### **The College Business & Management pathways lead to AMBA and AACSB Accredited Brunel Business School - among the top 5% of Business Schools in the world**



*All the facilities are on the campus itself, so you hardly have to go out. The College team is helpful and supportive, they take care of everything! My experience here will help me be a software engineer; Learning more about coding and data analysing will help with my career.*

**Revanshi, from India  
First Year in Business Computing**

# Discover Brunel

**Applied  
learning  
for the real  
world**

Few universities offer a better learning environment than we do. We sit in the top 25% of UK universities for research.

**Support that  
gets you  
ready for  
work**

Getting a job can be a full-time job. But at Brunel that work starts the day you arrive, with lots of support and placements available in over 95% of our courses.

**No wonder  
it's called  
Greater  
London**

Brunel is a single site university. One campus with thousands of benefits. Everything is within a 10-minute walk.

**The whole  
world  
on one  
campus**

The world's students call Brunel home. Something we're extremely proud of. In fact, 150 of the world's countries are represented at Brunel.



# **You'll apply your mind**

**Few universities offer a better learning environment than we do. We sit in the top 25% of UK universities for research. It means we attract and retain leading academics who produce world-renowned research, which creates real life situations, promotes innovative solutions and delivers inspiration daily.**

**Our teaching is judged to be among the UK's finest and affords you every opportunity to 'get' your subject. Your tutors and lecturers will be the subject's leading thinkers. Just think how inspiring your learning will be.**

**Past students have developed their ideas and gone on to form companies and disrupt markets. If our learning opportunities don't blow your mind, they'll certainly fill it.**

# HOW YOU'LL LEARN

**University teaching and learning will be different at Brunel from anything you've experienced before. We will support you every step of the way.**



You'll develop skills for independent learning, critical analysis and research. You'll learn from world-leading academics and, just as important, you'll spend time learning with your peers and developing your knowledge and skills through private study. With the support of your personal tutor throughout your degree, you won't be on your own.

How you're assessed will depend on your course, and will vary from coursework to presentations, lab tests or exams.

## Teaching methods

All of our courses are supported by a range of teaching methods. Lectures will be given to introduce a topic and summarise key themes, and your critical thinking and writing skills will be nurtured and developed through seminars. Smaller tutorial classes will provide more opportunities to ask questions and discuss ideas with your peers.

All of our programmes have a practical learning element. For some, this will take place in a laboratory. For others, you could learn in a theatre, clinical simulation suite or a studio.

In addition, you'll also be required to study in your own time. This independent study typically involves reading, group projects or preparation for a presentation.



## Work placements

Whether your placement is for six weeks, six months or a full academic year, it will allow you to get hands-on. You might undertake clinical experience with placement partners such as King's College Hospital or an industrial placement in business at IBM. This valuable time building relationships will stand you in good stead for future employment.

## Final year projects

Your final year project will showcase your learning and help you develop new skills. Depending on your course, this could be a dissertation, a work-based project, performance, or a scientific research study. You will get opportunities to showcase your work at events such as Made in Brunel and Brunel Engineers.

## Online resources

Our virtual learning environment, Blackboard Learn, provides all the information you'll need to succeed on your course. Here you will find recordings of all lectures as well as lecture materials, learning resources and reading lists.

# SUPPORTING YOUR STUDY

**We provide first-class facilities to help you get the best out of your time here, as well as aiding your learning through additional support services.**

## **The Library**

The library is open 24 hours a day during term-time, providing you with more than 300,000 books and reference materials and some unique collections. It also has an extensive e-library with over 600,000 eBooks and 100,000 eJournals.

Our Subject Liaison Librarians are there to help you access and use our resources. LibSmart, our study skills support package, includes induction sessions, information skills workshop, drop-ins and one-to-one support and online guides. We also run a laptop loan scheme, where you can borrow a laptop for up to four hours at a time.

**[brunel.ac.uk/library](http://brunel.ac.uk/library)**

## **Academic Skills Service**

The Academic Skills Service (ASK) teaches you the skills to learn independently and thrive academically. Whether it's advice on researching, planning and writing assignments, giving presentations, time management or mathematics, numeracy and statistics, the ASK team offers workshops, individual advice and resources to support your learning.

**[brunel.ac.uk/ask](http://brunel.ac.uk/ask)**

## **HeadStart**

HeadStart helps students from under-represented groups to make the transition to studying in higher education. The programme will give you a sense of what is expected of you at university and familiarise you with the support services on offer.

**[brunel.ac.uk/headstart](http://brunel.ac.uk/headstart)**

## **Academic English**

The Brunel Language Centre provides classes for international students in academic writing, including technical reports, critiques, proposals and dissertations. Classes also cover seminar and presentation skills, academic reading skills, listening and discussion skills, English pronunciation and grammar.

**[brunel.ac.uk/international/language-centre](http://brunel.ac.uk/international/language-centre)**



*The library had all the books for my course and the librarians were always happy to help search for particular articles or studies for a piece of research.*

**Seun, Economics and Accounting BSc (Hons)**





# Support that gets you ready for work

Getting a job can be a full-time job. But at Brunel that work starts the day you arrive. Over 95% of our courses offer a placement, giving you the opportunity to gain invaluable, real work experience. Better still, 100% of our students have access to first-class coaching, mentoring and networking. Plus our innovation hub is on hand to help your entrepreneurial spirit thrive – all part of our work-ready support to help you stand out in a competitive marketplace.

Does it make a difference?  
Brunel graduate salaries are £3,600 higher than the sector average (three years after graduating), ranking us in the top 30 UK universities.\*

\*Graduate Outcomes Survey, 2021

# SUPPORTING YOUR PROFESSIONAL DEVELOPMENT

**Our Professional Development Centre offers a wealth of opportunities, resources and advice to prepare you for life after graduation. They will work with you to develop your professional skills and get you ready for employment or further study in the UK or abroad. The centre offers the following core services:**

## **Find a placement**

Placements will give you the opportunity to gain experience and enhanced skills within a workplace environment. Students who complete a placement achieve higher degree classifications, better career outcomes and significantly higher graduate salaries.

We helped over 800 students find placements in 2017/18 and we'll help you, too. You'll benefit from our vast range of contacts in industries of all sizes. We can support you throughout the application process, including preparing for interviews to help you secure the placement that is right for you.

[brunel.ac.uk/pdc/placements](https://brunel.ac.uk/pdc/placements)

## **Start a business**

If you have an exciting business idea, our Innovation Hub can help you turn your vision into reality. You'll meet successful entrepreneurs and business mentors who are keen to support the next generation of entrepreneurs. Our Central Research Laboratory provides opportunities for graduates and alumni to develop their innovative products and technology ideas into new businesses.

Based in Hayes, West London, the CRL programme supports entrepreneurs at every stage of their journey, providing mentoring and investment along the way. You'll receive personalised coaching or mentoring and there's a chance to win up to £10,000 of funding for your business through our Venture competition.

[brunel.ac.uk/pdc/innovation-hub](https://brunel.ac.uk/pdc/innovation-hub)

## **Gain work experience**

If you want to earn money or gain valuable work experience whilst you are studying, our Job Shop will help you find part-time opportunities on and off campus. You might also be interested in applying to be one of our Student Ambassadors. You can find more details at

[brunel.ac.uk/jobshop](https://brunel.ac.uk/jobshop)

**Brunel graduate salaries are £3,600 higher than the sector average (three years after graduating), ranking us in the top 30 UK universities.**

(Graduate Outcomes Survey, 2021)



## Learn a new language

Brunel is one of the few UK universities to provide free language courses. You can choose from Arabic, French, German, Italian, Japanese, Mandarin, Brazilian Portuguese, Russian and Spanish.

You'll be taught by experienced language teachers in a fun and stimulating environment. Language courses run over two terms and you can record your achievements as part of your Brunel+ award – a personal development programme that recognises the skills and experience you develop beyond your studies.

[brunel.ac.uk/pdc/modern-languages](https://brunel.ac.uk/pdc/modern-languages)

## Prepare for a graduate career

From your arrival at Brunel to your final year, we'll support you in planning for your future. Our specialist career consultants will help you develop a great CV, practise your interview techniques and coach you on your career options through self-assessment tools, meetings and workshops. Our 15-minute Quick Query sessions are a great way to get some quick guidance, or you can book a longer session to discuss your career plans in more depth.

[brunel.ac.uk/pdc/careers](https://brunel.ac.uk/pdc/careers)

## Meet employers on campus

Our campus careers fairs are one of many opportunities you'll have to meet future employers. We have links with over 1,500 companies across all sectors that are regularly invited to our events to meet with students and explain what they do.

## Connect with professionals

Joining our professional mentoring programme can help you improve your employability and gain confidence when it comes to applying for placements, and understanding the industry you want to work in. We match students from backgrounds that are under-represented in universities with an experienced mentor in the public or private sector. You'll spend six months working with your mentor on your career and study plans, get help with your CV and practise interview and assessment techniques. You'll also develop contacts and build those vital interpersonal skills that employers look for. Students on a growing number of courses also have the chance to benefit from online mentoring by alumni. Find out more at

[brunel.ac.uk/mentoring](https://brunel.ac.uk/mentoring)

## Become a volunteer

A rewarding way of expanding and developing your skills is to become a Brunel Volunteer. Our students have a long history of volunteering to help the community, local charities and not-for-profit organisations. There's a huge range of schemes you can get involved with, both on and off campus. Find out more at

[brunelvolunteers.com](https://brunelvolunteers.com)



“

*My placement helped me discover my passion for cyber security. After this, I decided to focus on this for my final year, and narrow my job search to only apply for graduate schemes in this area*

**Noor, Computer Science BSc**



# Life on our London campus

**Brunel is a single site university. One campus with thousands of benefits. Everything is within a 10-minute walk. Whether you're going to class or for a coffee, it's all close by. Whether you want a place to eat or a space to meet, it's on your doorstep. Literally.**

**Better still, 1,650 students call campus home. So among the world-class facilities you'll find first-class friends.**

**We're also well connected. Just a short walk away, the town of Uxbridge offers you everything you need to shop, entertain and socialise – and is the perfect base to explore the surrounding countryside. The hustle and bustle of city life is right on your doorstep too, with central London just a tube ride away.**

# OUR LONDON CAMPUS

Visit us or take a look around campus on our virtual tour at

 [brunel.ac.uk/virtualtour](https://brunel.ac.uk/virtualtour)



- 1** London's finest university sports facilities include a Sports Park opposite the campus. There are also 3G pitches, tennis courts and an outdoor athletics track.
- 2** Faraday Complex Halls of Residence. We have over 4,500 self-catering rooms on campus.
- 3** The Antonin Artaud Theatre provides a creative space for performance and rehearsals.
- 4** Bishop Complex Halls of Residence
- 5** Clifton Hall of Residence
- 6** The Medical Centre provides general medical services for students living within the catchment area.
- 7** Chepstow Hall of Residence
- 8** Some great athletes have trained at our impressive Indoor Athletics Centre.
- 9** The Isambard Complex Halls of Residence
- 10** Saltash Hall of Residence
- 11** The Student Store is a quick stop for food and drinks.
- 12** The Library is in the Bannerman Centre, at the heart of the campus. This building is also home to the West London Assessment Centre which provides needs assessments for those who have successfully applied for the Disabled Students Allowance.
- 13** Brunel's Accommodation Office



- 14** Prayer facilities are available in the Isambard Complex and the Meeting House.
- 15** The Meeting House is a space away from the pressure of everyday life. Chaplains from Anglican, Catholic, Muslim and Hindu faiths are available for help, advice and spiritual support.
- 16** The main concourse runs through the heart of the campus. This is where you'll find shops, cafés, a pharmacy, a bank and a weekly farmers' market.
- 17** Our iconic Lecture Centre is the main teaching hub.



- 18** The Junction is a popular eating place with students. Our 1966 and Bite food outlets serve Costa and Starbucks alongside lighter lunch options. There's also Subway, Izzi's pizza emporium and Hola Pollo – our go-to chicken restaurant.
- 19** Galbraith Hall of Residence
- 20** Fleming Hall of Residence
- 21** Mill Hall of Residence
- 22** The Union of Brunel Students with its Loco's Bar and The Venue nightclub are housed in the Hamilton Centre.
- 23** Our Fitness Centre offers you state-of-the-art cardiovascular machines.
- 24** The Sports Centre accommodates basketball, volleyball, netball and badminton. You'll also find cricket and archery nets, a climbing wall, pump room and squash courts.
- 25** Eastern Gateway Building at the campus entrance is where you'll find the main reception.
- 26** Lancaster Complex Halls of Residence
- 27** Brunel Language Centre
- 28** **Brunel University London Pathway College**

# YOUR NEW HOME

Take a 360 degree look around our halls of residence for yourself at

 [brunel.ac.uk/virtualtour](https://brunel.ac.uk/virtualtour)





**We want to make it easy for you to focus on your studies. Having a room on campus is a great way to make friends and immerse yourself in our welcoming community. You're never more than 10 minutes' walk from all the study, social and sporting facilities you need to make the most of your time with us.**

### **Guaranteed on-campus accommodation**

We guarantee accommodation on campus for all international freshers. If your course starts in January or May, we'll prioritise your application for a room on campus during the following months. You'll find up-to-date details on our website.



### **Open Days**

Come and get a real feel for life at Brunel and discover more about the courses you are interested in by visiting us on one of our Open Days.

To find out more, please visit

**[brunel.ac.uk/opendays](https://brunel.ac.uk/opendays)**

#DiscoverBrunel



### **Our halls**

You'll find comfortable and secure accommodation across the campus. We offer a range of rooms to suit different budgets, including en suite and standard self-catering facilities, specially adapted rooms for disabled students and studios for couples.

To help you settle in, you'll find Residence Ambassadors in the residences who are there to support you when you arrive. With your security in mind, all our residences have card access and our halls have CCTV. Our security teams patrol the residences for your safety and wellbeing.

You'll find pricing details on our website, plus details of the application process.

### **[brunel.ac.uk/accommodation](https://brunel.ac.uk/accommodation)**

Brunel is signed up to the Universities UK Code of Practice, which outlines best practice and provides benchmarks for the management and quality of student housing.

### **Living off campus**

If you'd prefer to live off campus, we can help with that too. There's a wide choice of housing near Brunel, with good bus routes to the campus.

Brunel Student Lettings, the University-run Letting Agency, can support you with your property search. The team is dedicated to students' needs, does not charge for their services and is conveniently located on campus within the Accommodation Centre.

The University is your landlord and you will deal with Brunel Student Lettings throughout your stay for queries on repairs, rents, viewings etc. Visit **[brunel.ac.uk/lettings](https://brunel.ac.uk/lettings)** to view available properties and for more information.

Like some of our students, you may decide that living at home whilst at university is the right choice for you. The support offered on campus is available to all students, regardless of where you live, and you will have many opportunities to make new friends and enjoy different experiences by taking part in the numerous activities and events on offer through Freshers' Week and beyond.



**The Union is here to ensure that every Brunel student has the opportunity to enjoy, challenge, influence and benefit from all aspects of their studies and the wider student experience.**

**The Union is a charity that is led by students for students and you automatically become a member when you enrol at Brunel. They are committed to voicing student opinions. The Union enables debates on key issues, organises events and entertainment, facilitates clubs and societies, and is there to give you advice and support throughout your student journey.**

## **Advice and support**

The Union's Advice Service provides free and confidential advice on everything from money and debt to housing and academic issues. The Advice Service gathers information to help drive social change at Brunel and within the higher education sector.



*There are so many societies and activities to get involved in. I have discovered three new hobbies – climbing, cycling and salsa dancing, which have helped me to meet new people.*

**Amy, Occupational Therapy BSc (Hons)**

## **Clubs and societies**

There are over 100 societies for you to get involved in at Brunel, from Arts and Crafts or Ultimate Frisbee, to subject specific groups where you can socialise with students from your course. There's also over 50 sports activities for you to try, from American football and rock climbing to rugby, hockey and athletics. Our sports clubs are free to use for all students once you join Team Brunel, which is run by the Student's Union. Visit [brunel.ac.uk/life](http://brunel.ac.uk/life) for further details.

## **Social**

From our campus bar Loco's to The Venue nightclub, there's something for everyone to enjoy. Loco's has everything you could want from a student bar, including pool tables, comfy sofas and a wide range of food and drink – making it the perfect place to hang out with friends.

The Union also host lots of evening entertainment, from Bingo to Karaoke to Open Mic nights.

## **Student discounts**

With over 350 student discounts, official proof of age ID, 12 month ISIC digital card and loads of campus life stuff TOTUM is NUS extra, evolved! From only £14.99 for 12 months or £24.99 for three-years of savings. You can get your card online by visiting

[brunelstudents.com](http://brunelstudents.com)

# YOUR WELLBEING

**While you're with us, there may be times when you need some extra advice or support. Whether this relates to student life, finances, employment or legal issues, we're here to help. All of our support is available through one point of access so that we can help you identify which service is best for your individual needs.**

## Counselling and mental wellbeing

Brunel is committed to supporting students' mental health and wellbeing. Therefore we have a variety of services which are free to all Brunel students. Whether you need practical support from our Mental Health Advisors on the impact on your studies, or you need therapeutic support from our Counsellors, we are available to support you. There are also a variety of workshop sessions throughout the year, some run by our professional staff and others by trained students.

## Faith and religion

The Meeting House is your Faith and Spirituality Centre. Students can unwind and explore faith and spirituality at appropriate prayer facilities around campus. The Meeting House is a dedicated space where you can enjoy the Quiet Room or relax with tea in the lounge. The team can offer a listening ear, advice and spiritual support. Chaplains from Christian, Muslim and Hindu faiths are available throughout the week.

## Student support

Our campus and facilities are recognised as some of the best in the country for disabled students.

We offer advice and support to disabled students, including those with dyslexia and other specific learning disabilities, Asperger syndrome, mobility and sensory impairments and unseen disabilities such as epilepsy, diabetes, arthritis and sickle cell anaemia.

Our disability advisers will help you access the support or specialist equipment you need to make the most of your studies. We arrange support individually with each student and the service is confidential. For more information, please contact [studentsupport@brunel.ac.uk](mailto:studentsupport@brunel.ac.uk)

Further information on student support can be found at [brunel.ac.uk/life/supporting-you](https://brunel.ac.uk/life/supporting-you)



**The Disabled Students' Allowance (DSA) is open to Home students with any disability. It is not a loan and does not need to be paid back. You'll find out more at [gov.uk/disabled-students-allowances-dsas](https://gov.uk/disabled-students-allowances-dsas)**

# UNDERGRADUATE

# PROGRAMME & INTAKE MATRIX

Brunel University London Pathway College Undergraduate Pathways	January Foundation	January First Year	May Foundation	May First Year	September Foundation	September First Year
<b>Business</b>						
Business and Management BSc (Hons)	●	●	●	●	●	●
Business and Accounting Management BSc (Hons)	●	●	●		●	●
Marketing Management BSc (Hons)	●	●	●		●	●
International Business BSc (Hons)	●	●	●		●	●
Human Resource Management BSc (Hons)	●	●	●		●	●
<b>Computer Science</b>						
Business Computing BSc (Hons)	●	●	●		●	●
Business Computing (eBusiness) BSc (Hons)	●	●	●		●	●
Business Computing (Human Computer Interaction) BSc (Hons)	●	●	●		●	●
Business Computing (Social Media) BSc (Hons)	●	●	●		●	●
Computer Science BSc (Hons)	●	●	●		●	●
Computer Science (Artificial Intelligence) BSc (Hons)	●	●	●		●	●
Computer Science (Digital Media and Games) BSc (Hons)	●	●	●		●	●
Computer Science (Network Computing) BSc (Hons)	●	●	●		●	●
Computer Science (Software Engineering) BSc (Hons)	●	●	●		●	●
<b>Design</b>						
Design BSc (Hons)	●				●	
Digital Design BSc (Hons)	●				●	
Industrial Design BA (Hons)	●				●	
Product Design Engineering BSc (Hons)	●				●	
Visual Effects and Motion Graphics BSc (Hons)	●				●	
<b>Economics and Finance</b>						
Economics BSc (Hons)	●	●	●		●	●
Economics and Business Finance BSc (Hons)	●	●	●		●	●
Finance and Accounting BSc (Hons)	●	●	●		●	●
<b>Engineering</b>						
Aerospace Engineering BEng (Hons)	●				●	
Automotive Engineering BEng (Hons)	●				●	
Chemical Engineering BEng (Hons)	●				●	
Civil Engineering BEng (Hons)	●				●	
Civil Engineering (Environmental Engineering) BEng (Hons)	●				●	
Civil Engineering (Flood and Coastal) BEng (Hons)	●				●	
Computer Systems Engineering BEng (Hons)	●				●	
Electronic and Electrical Engineering BEng (Hons)	●				●	
Electronic and Electrical Engineering (Artificial Intelligence) BEng (Hons)	●				●	
Electronic and Electrical Engineering (Communication Systems) BEng (Hons)	●				●	
Electronic and Electrical Engineering (Computer Systems) BEng (Hons)	●				●	
Electronic and Electrical Engineering (Energy Systems) BEng (Hons)	●				●	
Mechanical Engineering BEng (Hons)	●				●	

Brunel University London Pathway College Undergraduate Pathways	January Foundation	January First Year	May Foundation	May First Year	September Foundation	September First Year
<b>Humanities, Social Sciences, Education and Psychology</b>						
Anthropology BSc (Hons)	●				●	
Anthropology and Sociology BSc (Hons)	●				●	
Communications and Media Studies BSc (Hons)	●				●	
Creative Writing BA (Hons)	●				●	
Education BA (Hons)	●				●	
English BA (Hons)	●				●	
English with Creative Writing BA (Hons)	●				●	
Film Production BA (Hons)	●				●	
Film and Television Studies BA (Hons)	●				●	
Film and Television Studies and English BA (Hons)	●				●	
Games Design BA (Hons)	●				●	
Games Design and Creative Writing BA (Hons)	●				●	
Global Challenges (Social Cohesion) BAsc (Hons)	●				●	
Global Challenges (Security) BAsc (Hons)	●				●	
International Politics BSc (Hons)	●				●	
Journalism Honours (Communication) BA (Hons)	●				●	
Journalism Honours (Politics) BA (Hons)	●				●	
Military and International History BA (Hons)	●				●	
Modern History BA (Hons)	●				●	
Politics BSc (Hons)	●				●	
Politics and History BSc (Hons)	●				●	
Politics and Sociology BSc (Hons)	●				●	
Psychology BSc (Hons)	●				●	
Psychology (Sport, Exercise and Health) BSc (Hons)	●				●	
Sociology BSc (Hons)	●				●	
<b>Law</b>						
Law LLB (Hons)	●				●	
Law with Criminal Justice LLB (Hons)	●				●	
Law with International Arbitration and Commercial Law LLB (Hons)	●				●	
<b>Life Sciences</b>						
Biomedical Sciences BSc (Hons)	●				●	
Biomedical Sciences (Biochemistry) BSc (Hons)	●				●	
Biomedical Sciences (Genetics) BSc (Hons)	●				●	
Biomedical Sciences (Human Health) BSc (Hons)	●				●	
Biomedical Sciences (Immunology) BSc (Hons)	●				●	
Environmental Sciences BSc (Hons)	●				●	
Environmental Sciences MSci (Hons)	●				●	
Life Sciences BSc (Hons)	●				●	
Psychology BSc (Hons)	●				●	
Psychology (Sport, Health and Exercise) BSc (Hons)	●				●	
Sport, Health and Exercise Sciences BSc (Hons)	●				●	
Sport, Health and Exercise Sciences with Business Studies BSc Hons	●				●	
Sport, Health and Exercise Sciences (Physical Education, Coaching and Social Issues) BSc	●				●	
<b>Sport, Health and Exercise Sciences</b>						
Sport, Health and Exercise Sciences (Physical Education, Coaching and Social Issues) BSc		●				
Sport, Health and Exercise Sciences BSc (Hons)		●				
Sport, Health and Exercise Sciences with Business Studies BSc (Hons)		●				

# POSTGRADUATE

## PROGRAMME & INTAKE MATRIX

Brunel University London Pathway College Postgraduate Pathways	January Pre-Master's	May Pre-Master's	September Pre-Master's
<b>Business</b>			
MBA	●	●	●
Accounting and Business Management MSc	●	●	●
Artificial Intelligence Strategy MSc	●	●	●
Business Intelligence and Digital Marketing MSc	●	●	●
Corporate Brand Management MSc	●	●	●
Global Supply Chain Management MSc	●	●	●
Human Resource Management MSc	●	●	●
International Business MSc	●	●	●
Management MSc	●	●	●
Management with 12 weeks placement MSc	●	●	●
Management Extended Professional Practice (12 months placement) MSc	●	●	●
Marketing MSc	●	●	●
<b>Computer Science</b>			
Artificial Intelligence MSc	●	●	
Data Science and Analytics MSc	●	●	
Digital Service Design MSc	●	●	
<b>Engineering and Design</b>			
Advanced Engineering Design MSc	●	●	
Design and Branding Strategy MA	●	●	
Design Strategy and Innovation MA	●	●	
Digital Design and Branding MSc	●	●	
Engineering Management MSc	●	●	
Integrated Product Design MSc	●	●	
<b>English</b>			
English Literature MA	●	●	
<b>Environmental Sciences</b>			
Environmental Management MSc	●	●	
Sustainability, Entrepreneurship and Design (with Professional Development) MSc	●	●	
<b>Law</b>			
International Commercial Law LLM	●	●	●
International Financial Regulation and Corporate Law LLM	●	●	●
International Human Rights Law LLM	●	●	●
Law LLM	●	●	●





# **Undergraduate pathways**



# BUSINESS



[pathway.brunel.ac.uk/programmes/business](https://pathway.brunel.ac.uk/programmes/business)

## Study Business at Brunel

In this pathway you will gain a broad business and management background and the analytical, technical and interpersonal skills needed to understand, analyse and address the issues facing today's companies.

By choosing particular modules in the later stages of your degree you will also be granted exemptions from select professional examinations in the fields of accounting, marketing or business and management.

## Careers and your future

Potential careers in: advertising, auditing, brand management, management consulting, marketing, sales.

## Undergraduate pathway in Business

### Foundation studies

#### Duration

Two semesters

#### Intakes

January, May, September

#### Course fee

International: £15,800

EU: £9,250

#### Typical modules

Economics

Interactive Learning Skills and Communication 1

Management

Marketing

Mathematics

Principles of Accounting

Principles of ICT

Statistics

## First Year University Studies

During your First Year university studies you will experience the curriculum of a Brunel University London degree, but taught in smaller class sizes and with extra academic contact hours, and will be fully prepared for onward study at Brunel Business School at Brunel University London.

#### Duration

Two semesters

#### Intakes

January, May\*, September

#### Course fee

International: £16,700

EU: £9,250

#### Typical modules

Interactive Learning Skills and Communication 2

International Business Environment

Introduction to Accounting and Financial Management

Introduction to Management Enquiry

Managing Information with Technology

Organisational Behaviour and Analysis

Principles and Practices of Marketing

### This pathway leads to the following Brunel University London degrees:

Business and Management BSc (Hons)

Accounting and Business Management BSc (Hons)

Human Resource Management BSc (Hons)

International Business BSc (Hons)

Marketing Management BSc (Hons)

\* Only BSc (Hons) Business and Management available in May intake.

**Business and Management (Accounting) BSc is accredited by AACSB, ACCA, AIA, CIMA, CIPFA and ICAEW.**



Find out more

# COMPUTER SCIENCE



[pathway.brunel.ac.uk/programmes/computer-science](https://pathway.brunel.ac.uk/programmes/computer-science)

## Study Computer Science at Brunel

This pathway will help you gain the skills and knowledge of the core concepts needed to understand computing and their application in organisations. With the fast changing pace of technological advances, you will experience learning at an individual as well as group level, ranging from report writing to designing your own business web page.

## Careers and your future

Potential careers in: business analysis, games programming, internet security, network administration, network analysis, network management, software development, software engineering and systems administration.

## Undergraduate pathway in Computer Science

### Foundation studies

#### Duration

Two semesters

#### Intakes

January, May, September

#### Course fee

International: £15,800

EU: £9,250

#### Typical modules

Business Mathematics/ Mathematics for Economics and Finance

Economics

Interactive Learning Skills and Communication 1

Management

Marketing

Principles of Accounting

Principles of ICT

Statistics

## First Year University Studies

During your First Year University studies you will experience the curriculum of a Brunel University London degree, but taught in smaller class sizes and with extra academic contact hours, and will be fully prepared for onward study at the Department of Computer Science at Brunel University London.

#### Duration

Two semesters

#### Intakes

January and September

#### Course fee

International: £16,700

EU: £9,250

#### Typical modules

Data and Information

Group Project Lab

Group Project Lecture

Group Project Tutorial

Information Systems and Organisations

Interactive Learning Skills and Communication 2

Introductory Programming

Logic and Computation

### This pathway leads to the following Brunel University London degrees:

Business Computing BSc (Hons)

Business Computing (eBusiness) BSc (Hons)

Business Computing

(Human Computer Interaction) BSc (Hons)

Business Computing (Social Media) BSc (Hons)

Computer Science BSc (Hons)

Computer Science (Artificial Intelligence) BSc (Hons)

Computer Science (Digital Media and Games) BSc (Hons)

Computer Science (Network Computing) BSc (Hons)

Computer Science (Software Engineering) BSc (Hons)



**Find out more**

# DESIGN



[pathway.brunel.ac.uk/programmes/design](https://pathway.brunel.ac.uk/programmes/design)

## Study Design at Brunel

Art and Design at Brunel is ranked 11th in the UK (Complete University Guide 2022). With the fast-changing pace of design advances, you will experience learning at an individual as well as group level thus helping to develop a wide range of skills when building up your extensive design portfolio. Brunel students can showcase their final-year projects at the annual Made in Brunel graduate show with awards presented by partners in the industry.

## Careers and your future

Potential Careers in companies such as: Dyson, Disney, Canon, Microsoft, Amazon.

Brunel graduates can potentially work as motion designers, 3D artists and compositors, as well as freelancing or setting up their own companies.



## Undergraduate pathway in Design

### Foundation studies

#### Duration

Two semesters

#### Intakes

September

#### Course fee

International: £16,700

EU: £9,250

#### Typical modules

2D Design

3D Design

Interactive Learning Skills and Communication

Practical Research Skills

Problem Solving, Creative Thinking & Analytical Skills

Specialist Design Project

#### Typical additional modules

Design Pathway – Technical Design

Digital Media Pathway – Introduction to Art & Design

### This pathway leads to the following Brunel University London degrees:

Design BSc (Hons)

Digital Design BSc (Hons)

Industrial Design BA

Product Design Engineering BSc (Hons)

Visual Effects and Motion Graphics BSc (Hons)



Find out  
more

# ECONOMICS AND FINANCE



[pathway.brunel.ac.uk/programmes/economics-and-finance](https://pathway.brunel.ac.uk/programmes/economics-and-finance)

## Study Economics and Finance at Brunel

Economics and Finance courses combine economic theory with the practical skills necessary to apply your knowledge to a business, industrial, financial or government environment. Providing students with this combination of theory and practice, as well as a solid background in finance, is what distinguishes Brunel's courses from other Economics degrees. An optional work placement arranged through the University's strong industry links will further enhance your employment prospects.

## Careers and your future

Potential careers in: audit and assurance, commercial banking, corporate finance credit control, economics research, financial analysis, financial planning, forensic accounting, insurance, investment banking, management accounting, money management, real estate, stockbroking and taxation.

## Undergraduate pathway in Economics and Finance

### Foundation studies

#### Duration

Two semesters

#### Intakes

January, May, September

#### Course fee

International: £15,800

EU: £9,250

#### Typical modules

Economics

Interactive Learning Skills and Communication 1

Management

Marketing

Mathematics

Principles of Accounting

Principles of ICT

Statistics

## First Year University Studies

During your First Year university studies you will experience the curriculum of a Brunel University London degree, but taught in smaller class sizes and with extra academic contact hours, and will be fully prepared for onward study at the Department of Economics and Finance at Brunel University London.

#### Duration

Two semesters

#### Intakes

January and September

#### Course fee

International: £16,700

EU: £9,250

#### Typical modules

Financial Markets

Interactive Learning Skills and Communication 2

Introduction to Financial Accounting

Macroeconomic Principles

Mathematics for Economics and Finance A

Mathematics for Economics and Finance B

Microeconomic Principles

Statistical Research Methods A

Statistical Research Methods B

### This pathway leads to the following Brunel University London degrees:

Economics BSc (Hons)

Economics and Business Finance BSc (Hons)

Finance and Accounting BSc (Hons)

Our degrees offer exemptions to ACCA and CIMA papers



Find out more

# ENGINEERING



[pathway.brunel.ac.uk/programmes/engineering](https://pathway.brunel.ac.uk/programmes/engineering)

## Study Engineering at Brunel

The College of Engineering, Design and Physical Sciences teaches undergraduate courses in four major subject areas including Design, Civil Engineering, Electronic and Computer Engineering and Mechanical Engineering. All programmes are designed to produce highly qualified graduates who will take up demanding roles within the engineering, design and technology industries by developing leadership, innovation and creative skills, in addition to the core technical and analytical skills, to enable and encourage graduates to follow successful careers and aspire to senior managerial roles.

### Undergraduate pathway in Engineering

#### Foundation studies

##### Duration

Two semesters

##### Intakes

January and September

##### Course fee

International: £16,700

EU: £9,250

##### Typical modules

Engineering Concepts

ICT and Programming Techniques

Interactive Learning Skills and Communication for Engineers

Mathematics for Engineers 1

Mathematics for Engineers 2

Physics for Engineers 1

Physics for Engineers 2

Problem Solving, Creative Thinking and Analytical Skills

#### This pathway leads to the following Brunel University London degrees:

Aerospace Engineering BEng (Hons)  
Automotive Engineering BEng (Hons)  
Chemical Engineering BEng (Hons)  
Civil Engineering BEng (Hons)  
Civil Engineering (Environmental Engineering) BEng (Hons)  
Civil Engineering (Flood and Coastal) BEng (Hons)  
Computer Systems Engineering BEng (Hons)  
Electronic and Electrical Engineering BEng (Hons)  
Electronic and Electrical Engineering (Artificial Intelligence) BEng (Hons)  
Electronic and Electrical Engineering (Computer Systems) BEng (Hons)  
Electronic and Electrical Engineering (Communication Systems) BEng (Hons)  
Electronic and Electrical Engineering (Energy Systems) BEng (Hons)  
Mechanical Engineering BEng (Hons)

**Our courses are accredited by the Institution of Civil Engineers, the Institution of Structural Engineers, the Institution of Mechanical Engineers, the Chartered Institution of Highways and Transportation, and the Institute of Highway Engineers.**



**Find out more**



# HUMANITIES, SOCIAL SCIENCES, EDUCATION AND PSYCHOLOGY



[pathway.brunel.ac.uk/programmes/humanities-social-sciences-education-and-psychology](https://pathway.brunel.ac.uk/programmes/humanities-social-sciences-education-and-psychology)

## Study Humanities, Social Sciences, Education and Psychology with Brunel

Humanities, Social Sciences, Education and Psychology at Brunel are a vibrant community of students and academic staff who are engaged in exploring the world we live in and engaging with ways of changing it for the better. The College is committed to delivering excellent research-led teaching and preparing its students to lead successful lives and to have brilliant careers.

Choose Brunel and you'll be taught by leading experts in the fields of Arts, Education, and the Social Sciences. You will also have numerous opportunities to engage in extra-curriculum activities including the Brunel Arts, Hillingdon Literary Festival and Business Life.

Studying within easy reach of central London is a key advantage here. You'll be close to some of the most important cultural, social and political institutions in the UK, such as the British Library and BFI IMAX.

## Careers and your future

Potential careers: novelist, publishing, arts administration, production assistant, games designer, marketing, education administration, education welfare, early years education, journalist, research officer, work in NGOs, media buyer, politician and civil service.

## Undergraduate pathway in Humanities, Social Sciences Education and Psychology

### Foundation studies

#### Duration

Two semesters

#### Intakes

January and September

#### Course fee

International: £15,800

EU: £9,250

#### Typical modules

Composition and Style  
Critical Thinking  
Exploring the Social World  
Interactive Learning Skills and Communication  
Intercultural Studies (double module)  
Principles of ICT  
Research Methods

### This pathway leads to the following Brunel University London degrees:

Anthropology BSc (Hons)  
Anthropology and Sociology BSc (Hons)  
Communications and Media Studies BSc (Hons)  
Creative Writing BA (Hons)  
Education BA (Hons)  
English BA (Hons)  
English with Creative Writing BA (Hons)  
Film and Television Studies BA (Hons)  
Film and Television Studies and English BA (Hons)  
Film Production BA (Hons)  
Games Design BA (Hons)  
Games Design and Creative Writing BA (Hons)  
Global Challenges (Social Cohesion) BSc (Hons)  
Global Challenges (Security) BSc (Hons)  
International Politics BSc (Hons)  
Journalism Honours (Politics) BSc (Hons)  
Journalism Honours (Communication) BSc (Hons)  
Military and International History BA (Hons)  
Modern History BA (Hons)  
Politics BSc (Hons)  
Politics and Sociology BSc (Hons)  
Psychology BSc (Hons)  
Psychology (Sport, Exercise and Health) BSc (Hons)  
Sociology BSc (Hons)



Find out  
more

## Study Law at Brunel

Brunel's Bachelor of Law (Honours) is a qualifying law degree that allows you to progress directly to the vocational stage of training to become a solicitor or barrister.

It is a flexible course that enables you to focus on areas that interest you and develop your own specialisation to meet the requirements of your chosen career. Potential specialisations include criminal law, family law, human rights law and international law.

## Careers and your future

Potential careers as: barrister, court clerk, paralegal, solicitor.



## Undergraduate pathway in Law

### Foundation studies

#### Duration

Two semesters

#### Intakes

January and September

#### Course fee

International: £15,800

EU: £9,250

#### Typical modules

Criminal Liability and Process  
 Critical Analysis and Writing Skills  
 Interactive Learning Skills and Communication 1  
 Introduction to the Law of Civil Obligations  
 Legal Ethics and Skills  
 Legal Foundations  
 Legal Research using ICT Skills  
 Management

### This pathway leads to the following Brunel University London degrees:

Law with Professional Placement LLB (Hons)  
 Law with Criminal Justice (Professional Placement) LLB (Hons)  
 Law with International Arbitration and Commercial Law (Professional Placement) LLB (Hons)

**We have a state-of-the-art moot court, where you can practise your speaking skills and presenting your arguments to judges.**



**Find out more**

# LIFE SCIENCES



[pathway.brunel.ac.uk/programmes/life-sciences](https://pathway.brunel.ac.uk/programmes/life-sciences)

## Study Life Sciences at Brunel

Our students will graduate with a unique mix of skills, giving them a competitive advantage in the employment market.

Our computational data analytics stream has been designed to equip Brunel graduates with the skills that are increasingly required by employers.

Our students have the option to broaden their horizons by studying a non-science subject.

## Careers and your future

Potential careers: biomedical scientist, psychologist, and careers in sports, nutrition, environmental and life sciences.

## Undergraduate pathway in Life Sciences

### Foundation studies

#### Duration

Two semesters

#### Intakes

January and September

#### Course fee

International: £16,700

EU: £9,250

#### Typical modules

Biology 1

Biology 2

Chemistry 1

Chemistry 2

ICT Skills

Interactive Learning Skills and Communication

Maths for Science and Computing

Research Methods, Critical Thinking and Expression

### This pathway leads to the following Brunel University London degrees:

Biomedical Sciences BSc (Hons)

Biomedical Sciences (Biochemistry) BSc (Hons)

Biomedical Sciences (Genetics) BSc (Hons)

Biomedical Sciences (Human Health) BSc (Hons)

Biomedical Sciences (Immunology) BSc (Hons)

Environmental Sciences BSc (Hons)

Environmental Sciences MSci

Life Sciences BSc (Hons)

Psychology BSc (Hons)

Psychology (Sport, Health and Exercise) BSc (Hons)

Sport, Health and Exercise Sciences BSc (Hons)

Sport, Health and Exercise Sciences with Business Studies BSc Hons

Sport, Health and Exercise Sciences (Physical Education, Coaching and Social Issues) BSc

### Biomedical Sciences at Brunel University London is ranked top 5 in London

(The Complete University Guide, 2022)

**Our Biomedical Sciences BSc (Hons) courses are accredited by the Royal Society of Biology.**

**Our Psychology BSc (Hons) course is accredited by The British Psychological Society.**

**We're accredited by the Institution of Environmental Sciences and you'll benefit from free IES membership (first step to becoming a Chartered Scientist).**



Find out more





# SPORT, HEALTH AND EXERCISE SCIENCES



[pathway.brunel.ac.uk/programmes/sport-science](http://pathway.brunel.ac.uk/programmes/sport-science)

## Study Sport, Health and Exercise Sciences at Brunel

Brunel University London has a long and distinguished history in sport, and whether you play at the highest competitive level or enjoy it for fitness and fun, there is a huge choice available.

During your studies you will be given the opportunity to develop your practical skills and understand the relationships between research, theory and practice.

The University's sports facilities are used by some of the world's top athletes, including Usain Bolt and Yohan Blake!

## Careers and your future

Potential careers in coaching, consultancy, fitness testing and training, sport development or sport management.



## Undergraduate pathway in Sport, Health and Exercise Sciences

### Foundation studies

#### Duration

Two semesters

#### Intakes

January

#### Course fee

International: £16,700

EU: £9,250

#### Typical modules

Fundamentals of Sport, Health and Exercise Science  
Interactive Learning Skills and Communication  
Introduction to the Social Sciences of Sport  
Physical activity, Health and Well being  
Physical Education and Sport Pedagogy  
Research and Learning Skills 1  
Synoptic Study 1

### This pathway leads to the following Brunel University London degrees:

Sport, Health and Exercise Sciences (Physical Education, Coaching and Social Issues) BSc  
Sport, Health and Exercise Sciences BSc  
Sport, Health and Exercise Sciences with Business Studies BSc (Hons)

### Sport, Health and Exercise Sciences at Brunel University London is ranked 15th in the UK

(The Complete University Guide, 2022)

**Our sports facilities are used by some of the world's top athletes, including Usain Bolt and Yohan Blake**



Find out  
more



# **Postgraduate pathways**

# BUSINESS



[pathway.brunel.ac.uk/programmes/postgraduate-business](http://pathway.brunel.ac.uk/programmes/postgraduate-business)

## Study Business at Brunel

Management MSc is one of the popular postgraduate courses on offer at Brunel Business School, the 2013 Times Higher Education Business School of the Year. The aim of the programme is to offer students a critically aware understanding of management and organisations relevant to career paths through an advanced study of organisations, their management and the changing contexts in which they operate. The programme offers four specialist pathways.

- Management (General Management) MSc
- Management (Branding and Marketing) MSc
- Management (Technology and Innovation Management) MSc
- Management (Creative Industries) MSc

## Careers and your future

Potential careers in: accounting and finance, advertising, brand management, business analysis, business consulting, human resource management, international trade, logistics, marketing management, project management, sales.



**Find out more**

## Postgraduate pathway in Business

### Duration

One semester

### Intakes

January, May, September

### Course fee

£8,700

### Typical modules

Critical and Creative Thinking  
Interactive Learning Skills and Communication 5  
Management Principles  
Research Methods

### This pathway leads to the following Brunel University London Master's degrees:

Accounting and Business Management MSc<sup>†</sup>  
Artificial Intelligence Strategy MSc  
Business Intelligence and Digital Marketing MSc<sup>†</sup>  
Corporate Brand Management MSc<sup>†</sup>§  
Global Supply Chain Management MSc<sup>‡</sup>  
Human Resource Management MSc<sup>†</sup>  
International Business MSc<sup>‡</sup>  
International Business with 12 weeks placement MSc  
International Business with Extended Professional Practice (12 months placement) MSc  
Management MSc<sup>†</sup>  
Management with 12 weeks placement MSc  
Management Extended Professional Practice (12 months placement) MSc  
Marketing MSc<sup>†</sup>  
Marketing with 12 weeks placement MSc  
Marketing with Extended Professional Practice (12 months placement) MSc  
MBA\*\*

\* Course has additional entry requirements of three years' managerial work experience in a postgraduate professional environment.

† Pre-Master's intake available in January, May and September.

‡ Pre-Master's intakes available in January and May only.

§ Course has additional entry requirements of two years' work experience in marketing, branding or sales.

¶ UK 3rd Class Honours degree in Business related subject, or international equivalent: no work experience required / UK 3rd Class Honours degree in non-Business related subject, or international equivalent: must have at least one year's related work experience.

# COMPUTER SCIENCE



[pathway.brunel.ac.uk/programmes/postgraduate-computer-science](https://pathway.brunel.ac.uk/programmes/postgraduate-computer-science)

## Study Computer Science at Brunel

The aim of this programme is to develop critical awareness of state-of-the-art data science and demonstrate the practical skills necessary to create value in its application to business, scientific and/or social domains.

The programme is run in conjunction with SAS, a market leader in business analytics software and services, and the largest independent vendor in the business intelligence market.

## Careers and your future

Potential careers in: database administration, IT management, project management, software engineering, systems analysis, systems development.

## Postgraduate pathway in Computer Science

### Duration

One semester

### Intakes

January and May

### Course fee

£8,700

### Typical modules

Applied Concepts  
Critical and Creative Thinking  
Interactive Learning Skills and Communication 5  
Research Methods

### This pathway leads to the following Brunel University London Master's degrees:

Artificial Intelligence MSc  
Data Science and Analytics MSc  
Digital Service Design MSc



**Find out more**



# DESIGN



[pathway.brunel.ac.uk/programmes/postgraduate-engineering-and-design](https://pathway.brunel.ac.uk/programmes/postgraduate-engineering-and-design)

## Study Design at Brunel

This programme prepares students from design and other creative disciplines to design innovative strategies and act as a catalyst for change. This can apply in the design, branding and related professions and businesses, education and other organisations.

## Careers and your future

Potential careers in: design consultancies, research and development departments, research institutions and government bodies, design project manager, design researcher and design policy maker.



## Postgraduate pathway in Design

### Duration

One semester

### Intakes

January, May and September

### Course fee

£8,700

### Typical modules

Critical and Creative Thinking  
Interactive Learning Skills and Communication 5  
Management Principles  
Research Methods

### This pathway leads to the following Brunel University London Master's degrees:

Design and Branding Strategy MA  
Design Strategy and Innovation MA  
Digital Design and Branding MSc  
Integrated Product Design MSc



**Find out more**

# ENGINEERING



[pathway.brunel.ac.uk/programmes/postgraduate-engineering-and-design](https://pathway.brunel.ac.uk/programmes/postgraduate-engineering-and-design)

## Study Engineering at Brunel

This programme is aimed at high-calibre and ambitious mechanical engineering graduates who are seeking to gain expertise in systematically developing complex, multidisciplinary engineering design.

## Careers and your future

Potential careers in: 3D graphic design, aerospace engineering, audio visual pre- and post-production design, engineering consultancy, games design and programming, healthcare science and research, manufacturing, research and development, service and government sectors.



**Find out  
more**

## Postgraduate pathway in Engineering

### Duration

One semester

### Intakes

January and May

### Course fee

£8,700

### Typical modules

Applied Concepts  
Critical and Creative Thinking  
Interactive Learning Skills and Communication 5  
Research Methods

### This pathway leads to the following Brunel University London Master's degrees:

Advanced Engineering Design MSc  
Engineering Management MSc



# ENGLISH



[pathway.brunel.ac.uk/programmes/postgraduate-english](https://pathway.brunel.ac.uk/programmes/postgraduate-english)

## Study English at Brunel

### English Literature MA

This course aims to introduce students to the advanced study of a wide range of literatures in English, from the early modern to the contemporary period. Students will explore the diversity of literary and cultural production through innovative modules designed to cross disciplinary, historical and geographical boundaries, thereby offering a wide scope within which students can develop their own interests.

### Careers and your future

Potential careers in: digital performance, live-art, print and electronic media, publishing, theatre, writing and direction.

## Postgraduate pathway in English

### Duration

One semester

### Intakes

January and May

### Course fee

£8,700

### Typical modules

Critical and Creative Thinking  
Interactive Learning Skills and Communication 5  
Management Principles  
Research Methods

### This pathway leads to the following Brunel University London Master's degree:

English Literature MA

### English at Brunel University London is ranked 13th in the UK

(The Complete University Guide, 2022)



Find out more

# ENVIRONMENTAL SCIENCES



[pathway.brunel.ac.uk/programmes/postgraduate-environmental-sciences](https://pathway.brunel.ac.uk/programmes/postgraduate-environmental-sciences)

## Study Environmental Sciences at Brunel

This programme equips students with two essential ingredients: firstly, the mind-set and ability to play a key role in building a sustainable world – one that is not only prosperous, but also environmentally stable and socially inclusive; secondly, hands-on experience, such that they can become entrepreneurial business leaders and inventors.

## Careers and your future

Potential careers in: climate change impact and sustainability, entrepreneurship, environmental science, legislation and management.

## Postgraduate pathway in Environmental Sciences

### Duration

One semester

### Intakes

January and May

### Course fee

£8,700

### Typical modules

Applied Concepts  
Critical and Creative Thinking  
Interactive Learning Skills and Communication 5  
Research Methods

### This pathway leads to the following Brunel University London Master's degrees:

Environmental Management MSc  
Sustainability, Entrepreneurship and Design  
(with Professional Development) MSc



**Find out more**







### Study Law at Brunel

The aim of this programme is to equip students with a comprehensive grounding in the legal concepts and principles operating in the areas of law chosen. Students are given the opportunity to gain an understanding of areas of social and criminal justice policy where relevant and are introduced to areas of controversy in their selected areas of law and socio-legal studies.

### Careers and your future

Potential careers in: human rights law, international commercial law, international financial regulation and corporate law and international intellectual property.

### Postgraduate pathway in Law

#### Duration

One semester

#### Intakes

January, May and September

#### Course fee

£8,700

#### Typical modules

Applied Concepts  
Critical and Creative Thinking  
Interactive Learning Skills and Communication 5  
Research Methods

#### This pathway leads to the following Brunel University London Master's degrees:

International Commercial Law LLM  
International Financial Regulation and Corporate Law LLM  
International Human Rights Law LLM  
Law LLM



Find out  
more

# NAVITAS BURSARIES AND SCHOLARSHIPS

## Navitas family bursaries

Navitas offers financial support in the form of family bursaries. A bursary applies where two or more students from the same family study with a Navitas member institution.\*

The bursary is equivalent to 10 per cent of the tuition fee of your programme of study.†

## Navitas academic merit scholarships

Navitas is committed to helping you achieve your career goals by offering scholarships to outstanding students.

Each term, Navitas colleges\* award two students with academic merit scholarships.

For more information, talk to an Advisor at your college about how to apply for a merit scholarship or visit individual college websites and search for 'scholarships and bursaries'.

\* The Navitas family bursary and academic merit scholarships are offered to students studying at ACBT, ARU College, BCUIC, Brunel University London Pathway College, Curtin College, Curtin Singapore, Deakin College, Deakin College Indonesia, Edith Cowan College, Eynesbury, FIC, Griffith College, HIC, ICM, ICP, ICRGU, TCSU, La Trobe Melbourne, La Trobe University Sydney Campus, Leicester Global Study Centre, Navitas at UMass Boston, SAIBT, SIBT, UPIC, UA92 Global and UCIC only.

† Certificate programmes may also be known or registered as Foundation Studies or University Transfer Programme Stage I. Diploma programmes may also be known or registered as Undergraduate Pathway, University Transfer Programme (UTP), University Transfer Programme Stage II, University Pathways Programme.

‡ The Navitas bursary is not applicable to any English language programme or any component of an English language programme offered by a Navitas member institution.

§ The supporting documentation that is required will depend on the country where the student is enrolled.

\*\* Navitas academic merit awards are offered to students studying in the UK at ARU College, BCUIC, Brunel University London Pathway College, HIC, ICP, ICRGU, Leicester Global Study Centre, TCSU, UPIC and UA92 Global only. This information is correct as at the time of printing and may be subject to change without notice or at the discretion of Navitas member institutions or Navitas Limited.





**Founder of social enterprise  
The Safety Box**

Multi-award-winning  
entrepreneurial, innovative  
leader and advocate for  
social enterprise, working  
with young people to  
improve their lives and  
the world around them.

**Workshop Panel**  
10th - 11th October  
10am - 12pm  
Birmingham, UK

**Support  
Industrial Design  
and Innovation  
Entrepreneurship  
Panel**

**B.A. Industrial Design  
and Technology**

# #DiscoverBrunel

## [brunel.ac.uk/pathwaycollege](https://brunel.ac.uk/pathwaycollege)

London Brunel International College Ltd. trading as  
Brunel University London Pathway College

Russell Building  
Kingston Lane  
Uxbridge  
Greater London  
UB8 3PH

T +44 (0)1895 265540

E [info@pathway.brunel.ac.uk](mailto:info@pathway.brunel.ac.uk)

Company Number 05171106;  
Registered in England and Wales.

The information contained in this guide is correct at the time of publication; however, London Brunel International College Ltd. trading as Brunel University London Pathway College reserves the right to alter, amend or delete details at any time without notice. This guide is provided free of charge. Published November 2022. BPC210317-0704 1122\_AW



Brunel University London Pathway  
College is part of the Navitas Group.

