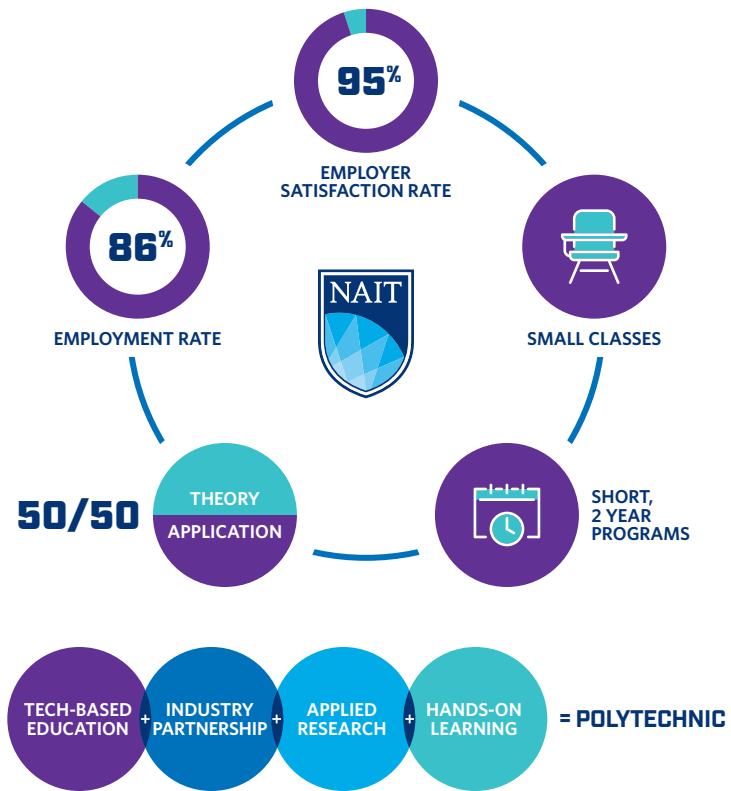
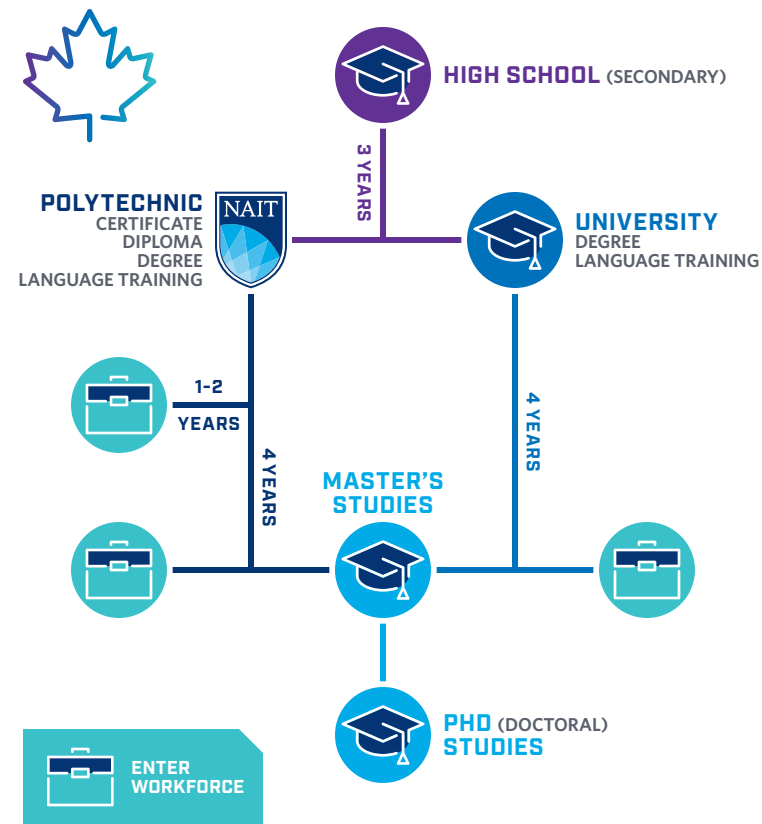




POLYTECHNIC EDUCATION



CANADA'S HIGHER EDUCATION SYSTEM



HOW TO APPLY TO NAIT?

Apply early to increase your chances of success!

View our application checklist online:

▶ <https://www.nait.ca/nait/international/international-admissions>

Questions?

▶ asknait@nait.ca ▶ +17804716248

Follow us on social media:

NAITInternational NAITintl

11762 - 106 St. Edmonton, Alberta, Canada T5G 2R1

nait.ca

Designated Learning Institution Number (DLI #) 018713200642
Member of AIEA, CACUSS, CBIE, CICan, Conahec and Polytechnics Canada.



NORTHERN ALBERTA INSTITUTE OF TECHNOLOGY

VOTED #1 SAFEST CAMPUS IN CANADA



ALBERTA WELCOMES YOU



YOUR FIRST STEP TO ACADEMIC SUCCESS

English as a Second Language (ESL)



ABOUT THE PROGRAM:

NAIT offers 6 levels of ESL instruction, from high beginner (levels 1, 2 and 3) to high intermediate (levels 4, 5 and 6). Students will write a placement test to determine their start level.

Each level teaches speaking and listening, reading and vocabulary, writing and grammar, preparation for academic study at NAIT, and practical skills for studying and living in Canada.

Classes are small, only 15-20 students, focusing on applied learning, group work and hands-on activities.

1 level = 15 weeks (or 1 semester)

\$4580/level (or 1 full-time semester) *cost subject to change

WHERE IT CAN TAKE YOU:

Once you complete Level 6, you can apply to most programs at NAIT!

START IN SEPTEMBER, JANUARY OR MAY! Beginning October 1, 2019, applicants who meet NAIT's academic entrance requirements, and have an Academic IELTS score of 5.5 or an Academic TOEFL iBT score of 70 can get conditional acceptance into certain programs. Conditions apply.

Visit nait.ca/esl for more information

PROGRAM AREAS:

BUSINESS AND MANAGEMENT

COMPUTERS AND IT

CONSTRUCTION

DESIGN AND COMMUNICATIONS

ENGINEERING AND TECHNOLOGIES

ENVIRONMENT AND NATURAL RESOURCES

HEALTH AND LIFE SCIENCES

HOSPITALITY AND CULINARY

PROGRAMS INCLUDE:

- ▶ ACADEMIC UPGRADING
- ▶ ALTERNATIVE ENERGY TECHNOLOGY
- ▶ BACHELOR OF BUSINESS ADMINISTRATION
- ▶ BACHELOR OF TECHNOLOGY
- ▶ BUSINESS ADMINISTRATION
- ▶ CHEMICAL TECHNOLOGY
- ▶ CHEMICAL ENGINEERING TECHNOLOGY
- ▶ CONSTRUCTION ENGINEERING TECHNOLOGY
- ▶ ENGINEERING DESIGN TECHNOLOGY
- ▶ GEOMATICS ENGINEERING TECHNOLOGY
- ▶ GEOLOGICAL ENGINEERING TECHNOLOGY
- ▶ INSTRUMENTATION ENGINEERING TECHNOLOGY
- ▶ LANDSCAPE ARCHITECTURAL TECHNOLOGY
- ▶ MECHANICAL ENGINEERING TECHNOLOGY
- ▶ MATERIALS ENGINEERING TECHNOLOGY
- ▶ NANOTECHNOLOGY
- ▶ PERSONAL FITNESS TRAINER
- ▶ PETROLEUM ENGINEERING TECHNOLOGY
- ▶ WIRELESS SYSTEMS ENGINEERING TECHNOLOGY
- ▶ ENGLISH AS A SECOND LANGUAGE

AND MORE!



ALBERTA IS CANADA'S RICHEST PROVINCE



ALBERTA HAS THE HIGHEST MINIMUM WAGE IN CANADA



ALBERTA RESIDENTS HAVE FREE HEALTHCARE — INCLUDING INTERNATIONAL STUDENTS

WELCOME TO EDMONTON

As the capital city of the province of Alberta, Edmonton is one of the fastest-growing cities in Canada.

With a population of over one million, it offers all the highlights of a big city, while maintaining a safe and friendly environment.

The city has been ranked the top city in Canada for urban work for youth in terms of affordability, education, employment and entrepreneurship.

STUDENTS ARRIVING AT EDMONTON INTERNATIONAL AIRPORT ARE WELCOMED BY NAIT VOLUNTEERS AND ASSIGNED AN ADVISOR.

Peer Mentors organize visits to Rogers Place Arena (skating), the River Valley (summer barbecues) and to local festivals throughout the year. Information sessions are offered in immigration, settlement and career planning.

NAIT SERVICES



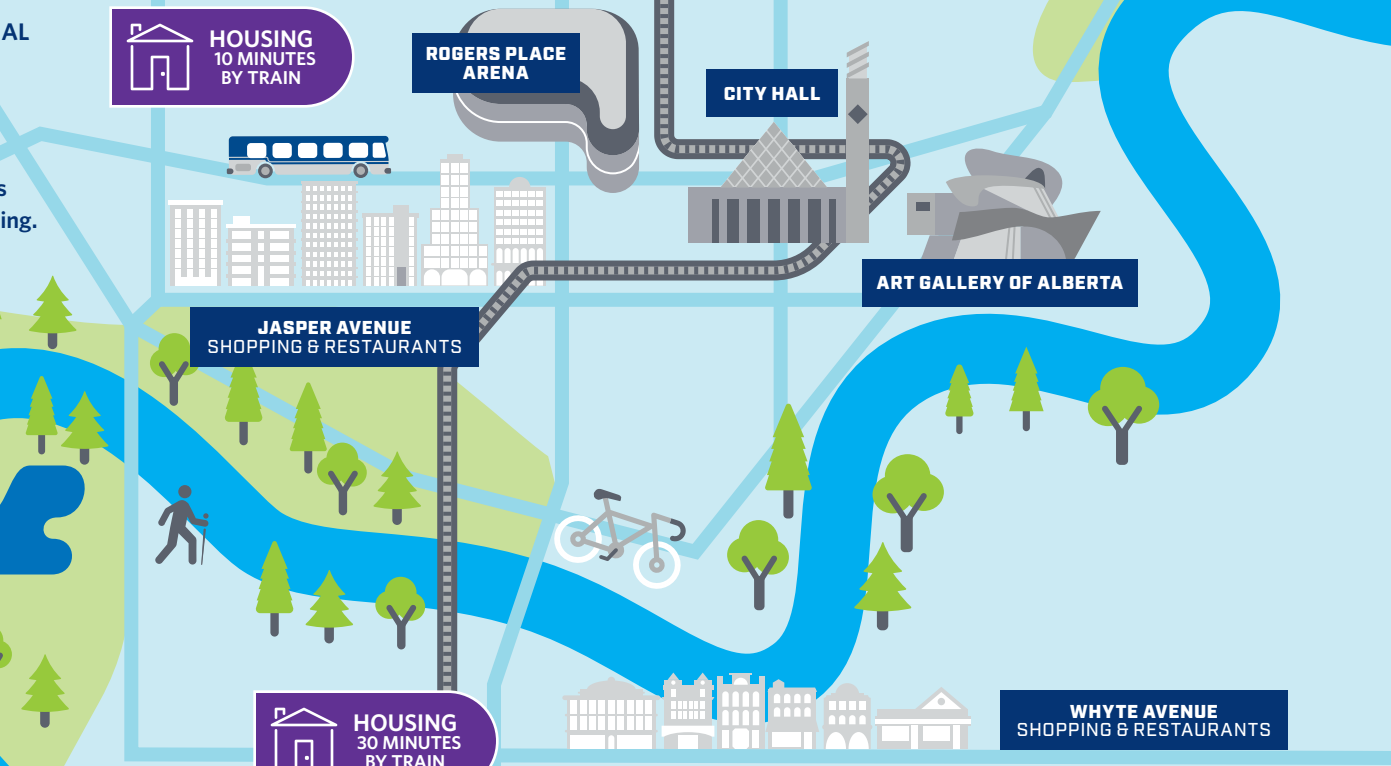
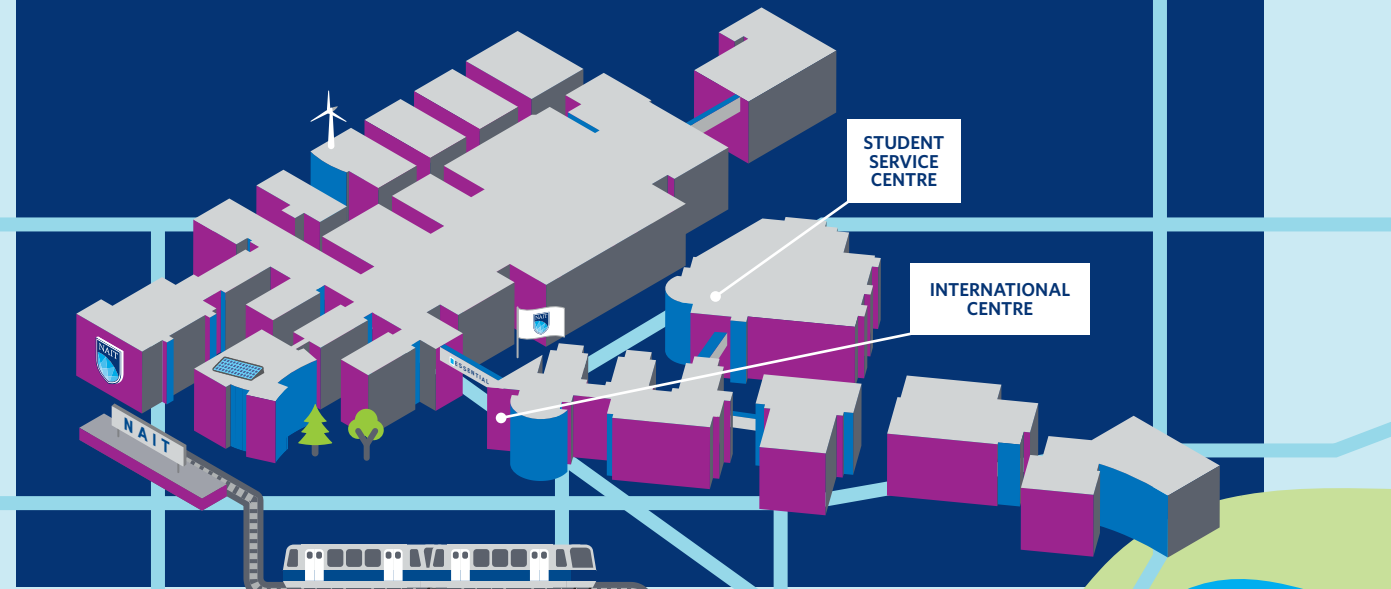
EXCITING FOOD OPTIONS: FROM FINE DINING TO QUICK AND HEALTHY RESTAURANTS



RECREATION FACILITIES: FITNESS CENTRE, SWIMMING POOL AND SKATING RINK



CANADIAN CULTURAL EVENTS & NAIT STUDENT CLUBS OFFER A VARIETY OF ACTIVITIES ALL YEAR



EDMONTON IS HOME TO NORTH AMERICA'S LARGEST SHOPPING MALL

THE RIVER VALLEY IS THE LARGEST URBAN PARK IN NORTH AMERICA

GET TO AND FROM NAIT WITH EDMONTON'S EASY-TO-USE TRANSIT SYSTEM

EDMONTON IS ONE OF CANADA'S SUNNIEST CITIES

EDMONTON IS KNOWN AS CANADA'S FESTIVAL CITY

COSTS, WORKING & IMMIGRATION



LIVING COSTS IN EDMONTON (PER MONTH)

RENT	\$600-\$1,000
FOOD	\$300-\$400
OTHER	\$200-\$300
TOTAL	\$1,100-\$1,700

ESL STUDENTS: Work only on-campus

DEGREE/DIPLOMA/CERTIFICATE STUDENTS: Work 20 hrs/week off-campus, and unlimited hrs during scheduled breaks

EMPLOYMENT EARNING POTENTIAL

PART-TIME EARNING POTENTIAL: \$15/hour x 20 hours per week = \$300 per week = \$4,800 per semester

FULL-TIME EARNING POTENTIAL: \$15/hour x 40 hours per week = \$600 per week = \$1,800 per winter break = \$9,600 per summer break

*Earning potential are estimates only based on Alberta's minimum wage of \$15/hour.

Prices may vary between programs. See nait.ca for details. All amounts are in CAD\$. The above path is only a sample costs and potential immigration pathway.

Immigration to Canada is governed by federal regulations.

WELCOME TO CANADA

STUDY PERMIT \$19,000-22,000*

PROGRAM SEMESTER 1 (SEPTEMBER - DECEMBER)

TUITION	\$9,500*
LIVING	\$6,800*
WORK PART-TIME	\$4,800*

WINTER BREAK (3 WEEKS)
WORK FULL-TIME \$1,800* 

PROGRAM SEMESTER 2 (JANUARY - APRIL)

TUITION	\$9,500*
LIVING	\$6,800*
WORK PART-TIME	\$4,800*

SUMMER BREAK (4 MONTHS)
WORK FULL-TIME \$9,600* 

PROGRAM SEMESTER 3 (SEPTEMBER - DECEMBER)

TUITION	\$9,500*
LIVING	\$6,800*
WORK PART-TIME	\$4,800*

WINTER BREAK (3 WEEKS)
WORK FULL-TIME \$1,800* 

PROGRAM SEMESTER 4 (JANUARY - MAY)

TUITION	\$9,500*
LIVING	\$6,800*
WORK PART-TIME	\$4,800*

GRADUATE 

OPTION TO APPLY FOR POST-GRADUATE WORK PERMIT

WORK 2-3 YRS | WORK 3-4 YRS

APPLY FOR PERMANENT RESIDENCE

 **APPLY FOR CITIZENSHIP**