



University of Wisconsin - Stout

Office of International Education and ESL Institute



OFFICE OF INTERNATIONAL EDUCATION
Inspiring Innovation. Learn more at www.uwstout.edu/oie

Menomonie, Wisconsin - USA

Named after a **historic** Native American tribe, Menomonie is a city of 16,000 people.

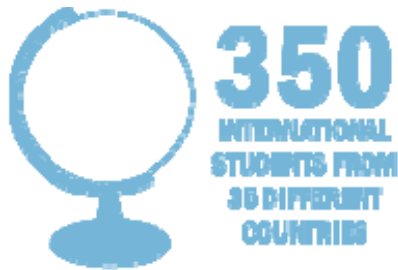
The community is **safe**, **friendly** and located just 96km east of the Minneapolis/St. Paul, Minnesota metropolitan area.



Menomonie, Wisconsin - USA



Enrollment at a Glance

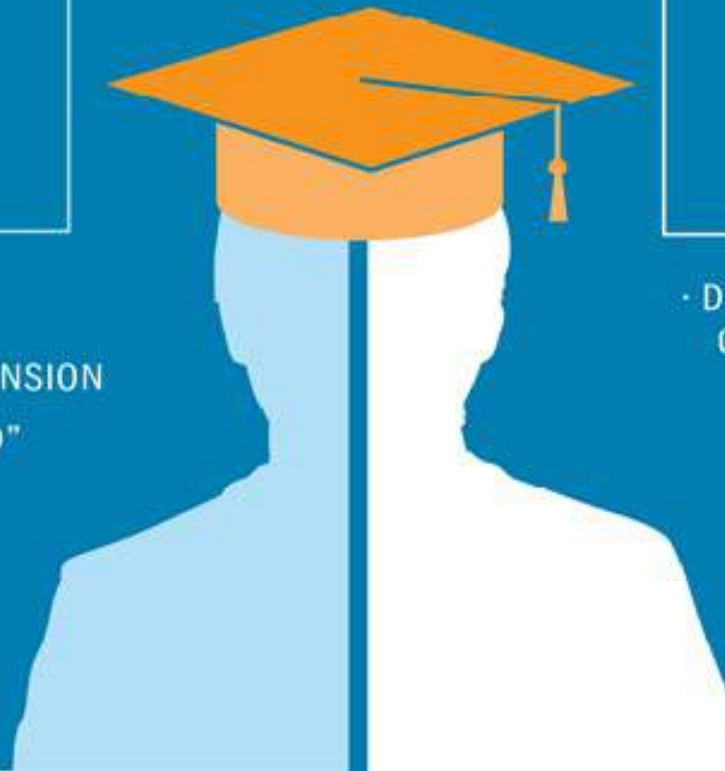


The University of Wisconsin-Stout is a comprehensive, **career-focused** polytechnic university where students, faculty, and staff use **applied learning**, scientific theory and research to **solve real-world problems** and serve society.



APPLIED LEARNING

- INCORPORATES TOOLS TO EVALUATE, CREATE, AND SHAPE HUMAN COMPREHENSION
- EMPHASIZES "REAL WORLD" AND "HANDS-ON" LEARNING EXPERIENCES



LIBERAL ARTS

- DEVELOPS CRITICAL THINKING, COMPLEX PROBLEM SOLVING, COMMUNICATION AND LEADERSHIP SKILLS
- INTRODUCES STUDENTS TO A VARIETY OF DISCIPLINES

UNIVERSITY OF WISCONSIN-STOUT

97%
EMPLOYED
OR CONTINUING EDUCATION

2x MORE LABS
THAN CLASSROOMS

LARGEST
ANNUAL CAREER CONFERENCE
IN THE MIDWEST

65,690
ALUMNI WORLDWIDE

1,850
DEGREES AWARDED IN 2012-13

EXCEPTIONAL PAID CO-OP AND INTERNSHIP OPPORTUNITIES WITH MORE THAN 550 BUSINESSES AND NON-PROFITS INCLUDING:



ALL OF OUR EMPLOYED STUDENTS ARE THE
PROPERTY OF THE RESPECTIVE COMPANY
AND ARE NOT EMPLOYED BY THE UNIVERSITY OF
WISCONSIN, STOUT. EMPLOYMENT IS SUBJECT TO
OFFER.

Laptop Computers

LAPTOPS PROVIDED
& \$4,500 IN SOFTWARE

LAPTOP RENEWAL
EVERY TWO YEARS

WISCONSIN'S ONLY LAPTOP CAMPUS

Bachelor's Degree and ESL students are given a new laptop during their student orientation. Students trade the laptop in after two years of use for an updated computer to use through their graduation. The laptops are integrated into classroom instruction.



In the Classroom



AVERAGE CLASS SIZE

LECTURES:
23
STUDENTS

LABS:
18
STUDENTS

UW-Stout is proud to have nearly 500 faculty members teaching 99% of the course selections within four colleges and four schools.

ACADEMIC PROGRAMS

- 45 Bachelor's Degree Programs
- 23 Master's Degree Programs



Popular Bachelor's Programs



- Applied Mathematics and Computer Science
- Applied Science
- Business Administration
- Computer Engineering
- Dietetics
- Engineering Technology
- Hotel, Restaurant and Tourism Management
- Information Technology

For all offered Bachelor's programs at UW- Stout go to:
<http://www.uwstout.edu/programs/ugrad.cfm>

Popular Master's Programs



- Applied Psychology
- Food and Nutritional Sciences
- Industrial and Applied Mathematics
- Operations and Supply Management
- Risk Control
- Masters in Fine Arts in Design

For all offered Master's programs at UW- Stout go to:
<http://www.uwstout.edu/grad/prospect/programs.cfm>

ESL Institute

ESL Levels:

- 1 Pre-academic
- 8 Academic

Practice English Skills In:

- Listening
- Speaking
- Grammar
- Reading
- Writing

Conditional Admission Available!



For details visit
www.uwstout.edu/esl

ESL Institute



MORE THAN LANGUAGE LEARNING

In addition to year round, intensive English study, the ESL Institute offers the **Summer American Culture and Language Program**.

This program is full of excursions and activities designed to paint a more-complete image of American life for international students.

2015 - 2016 Estimated Costs*

Expense	Bachelor's 30 Credits* (Academic Year)	Master's 18 Credits** (Academic Year)	ESL Institute 24 Credits (Academic Year)
Tuition and Fees	\$17,609	\$15,745	\$10,407
Housing	\$3,960	\$3,960	\$3,960
Food/Living Expenses	\$3,100	\$3,100	\$3,100
Books, Supplies, Other Costs	\$225	\$225	\$0
Health Insurance	\$1,427	\$1,427	\$1,427
Total	\$26,321	\$24,457	\$18,894

*15 credits per semester **9 credits per semester

Student tuition is calculated per credit | Graduate tuition credit varies from program to program

Current costs are available online at www.uwstout.edu/oie/iss/finances.cfm

Scholarship Opportunity

- Undergraduate Students
 - \$5,000 per academic year GPA: 3.51 and greater
 - \$4,000 per academic year GPA: 3.0 - 3.5
 - \$3,000 per academic year GPA: 2.75-2.99
- Graduate Students
 - \$7,000 for the FIRST academic year GPA 3.5-4.0
 - \$6,000 per academic year GPA 3.0-3.49 (or 4.0 after first year)
 - \$5,000 per academic year GPA: 2.75-2.99



*Dependent on availability

Academic & Support Services

- Help students explore different majors
- Writing Center
- Guidance for transfer students
- Career counseling
- Internship opportunities
- Corporate career conferences
- Graduate school information



International Student Services

- Orientation program
- Class registration
- Immigration status
- Resident Hall check-in
- Health insurance
- Friendship Family Program
- American culture immersion course

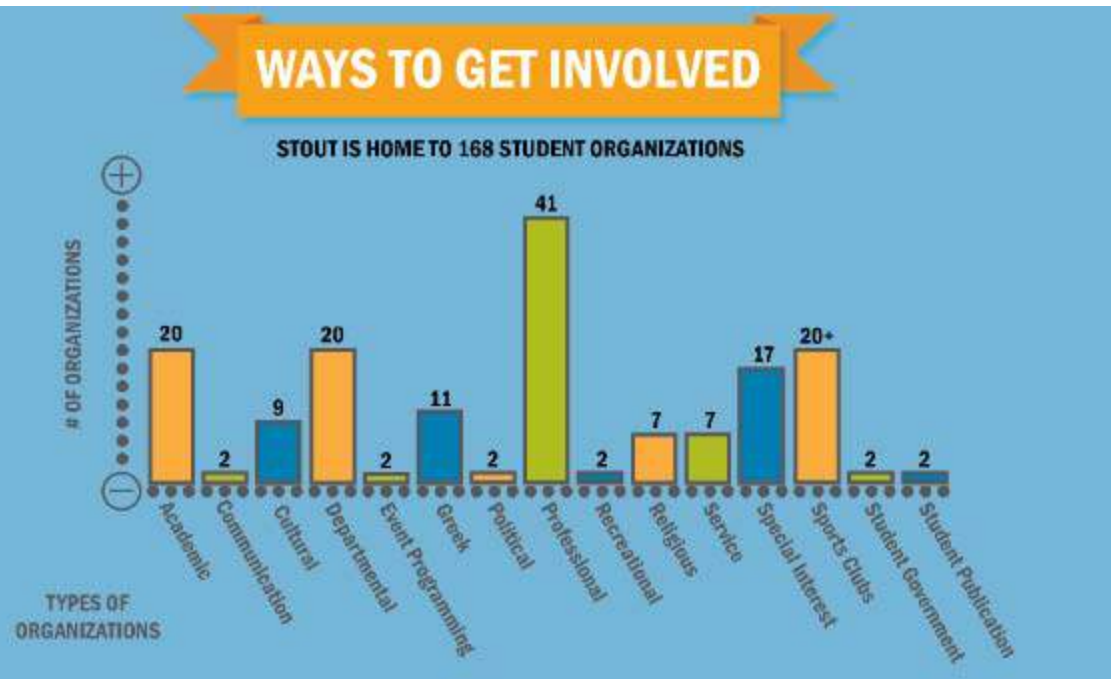


International Student Activities

- Trips – festivals, fairs, malls and more!
- Activities – holiday events, potlucks, community events, films, soccer . . .
- International Week
- English conversation hours
- International Relations Club
- Participate in one of the 145 student clubs or start your own!



UNIVERSITY OF WISCONSIN-STOUT



Campus Housing

OPEN ALL YEAR ROUND

Convenient to:

- Classrooms
- Cafeterias
- Student center
- Athletic facilities



How To Apply

1. Complete the International Student Application for Admission
 2. Application fee
 3. Proof of English proficiency through a TOEFL or IELTS score
- **Or** successfully complete studies at the University of Wisconsin - Stout English as a Second Language Institute
4. Bank statement to use as documented evidence of sufficient financial resources
 5. Official transcripts (translated into English)

Apply Online: apply.wisconsin.edu

Required Language Scores

BACHELOR'S DEGREE REQUIREMENT

- Minimum TOEFL score of 70
- Minimum IELTS score of 6.0
 - Remedial English course required

MASTER'S DEGREE REQUIREMENT

- Minimum TOEFL score of 70
 - Applicants with TOEFL scores under 79 will be required to take at least one advanced level language course through UW-Stout's English as a Second Language program
- Minimum IELTS score of 6.5



— Conditional Admission

Students can apply for conditional admission if they submit all required documents except for the TOEFL or IELTS.

- Students can retake the TOEFL/IELTS until they meet the minimum score required
- Students can complete studies at the English as a Second Language Institute

* Please note that not all graduate programs offer conditional admission. For details, please review the graduate program's specific website or consult with the graduate admissions office at gradschool@uwstout.edu.



Contact Us!



Office of International Education
200 Main Street East
Menomonie, Wisconsin 54571

Phone: (715) 232-2132

OIE email: globaled@uwstout.edu
ESL email: learnesl@uwstout.edu