



**STUDY  
WITH  
PLYMOUTH  
UNIVERSITY**

PLYMOUTH UNIVERSITY  
INTERNATIONAL COLLEGE  
STUDENT GUIDE  
2018/19



# WELCOME



## MESSAGE FROM THE VICE-CHANCELLOR OF UNIVERSITY OF PLYMOUTH

Welcome to the University of Plymouth, and thank you for your interest in our academic community. We are a university that takes pride in its international reputation and standing, and the warm welcome that it offers all of its students, no matter where they are from in the world.

We are very proud of our partnership with Plymouth University International College (PUIC), which provides eligible students with a pathway into our vibrant academic community. The team's expert support and tailored programmes help international students make the transition to life here in the beautiful South West of England, and to academic study at one of the top 350 universities in the world.

We are a university defined by our world-leading research in many key areas; our research-informed teaching; our commitment to nurturing talent wherever it is found; and our benchmark-setting approach to embedding sustainability and enterprise into all that we do. We have both high hopes for, and expectations of, our students, who are the custodians and co-creators of our student experience.

So, let me wish you every success with your studies at PUIC and I look forward to welcoming you to the University of Plymouth.

**Professor Judith Petts, CBE**  
Vice-Chancellor, University of Plymouth



## MESSAGE FROM THE COLLEGE DIRECTOR AND PRINCIPAL OF PUIC

At Plymouth University International College (PUIC), our goal is your success. We offer a wide range of foundation and pre-Masters programmes in partnership with the University of Plymouth, which lead to undergraduate and postgraduate degrees.

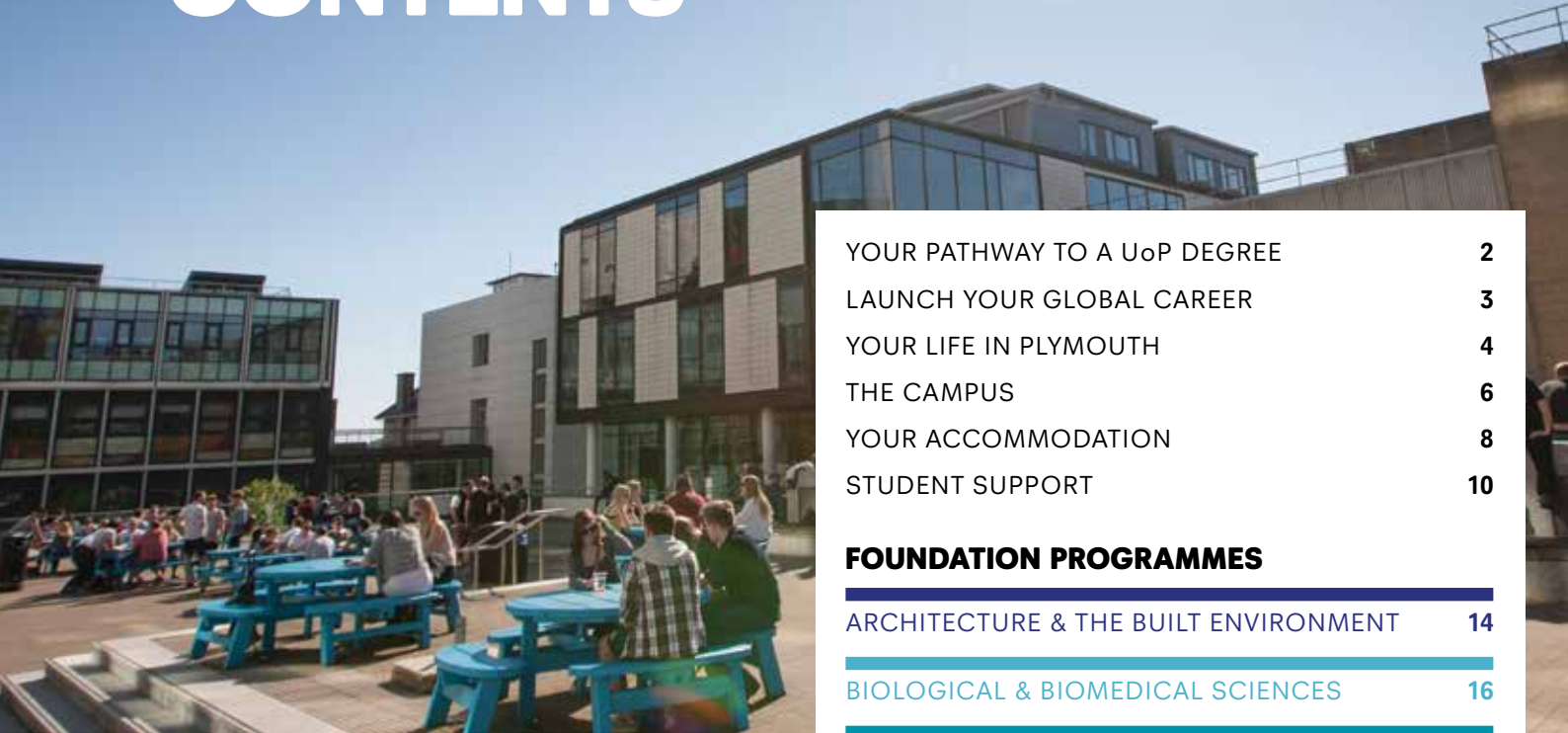
Your student experience is at the heart of everything we do – from application through to enrolment, teaching and assessment, we ensure that you are supported throughout your journey to graduation.

PUIC is part of the University's city centre campus; you will be taught by highly-qualified tutors as we prepare you for a career in your chosen field, and our dedicated Student Services team will help you to achieve your potential. You will be expected to work hard, but we will also encourage you to immerse yourself in all that university life and the City of Plymouth have to offer. Why not join one of the University's many sports clubs and societies, or volunteer for the college Student Council?

I applaud your decision to join us as you embark on the most important phase of your life and look forward to welcoming you to Britain's Ocean City.

**Peter McDonnell**  
College Director and Principal, PUIC

# CONTENTS



YOUR PATHWAY TO A UoP DEGREE	2
LAUNCH YOUR GLOBAL CAREER	3
YOUR LIFE IN PLYMOUTH	4
THE CAMPUS	6
YOUR ACCOMMODATION	8
STUDENT SUPPORT	10

## FOUNDATION PROGRAMMES

ARCHITECTURE & THE BUILT ENVIRONMENT	14
BIOLOGICAL & BIOMEDICAL SCIENCES	16
BUSINESS & MANAGEMENT	17
COMPUTING & MATHEMATICAL SCIENCES	22
EARTH, GEOGRAPHY & ENVIRONMENT	24
ENGINEERING & ROBOTICS	25
HEALTH & HUMAN SCIENCES	27
LAW, GOVERNMENT & SOCIETY	28
MARINE & OCEAN	30
TOURISM & HOSPITALITY	31

## PRE-MASTERS PROGRAMMES

BUSINESS & MANAGEMENT	34
DATA & COMPUTER SCIENCES	34
PUBLISHING	35
TOURISM & HOSPITALITY	35
PRE-SESSIONAL ENGLISH	36
ENTRY REQUIREMENTS	37
FEES AND SCHOLARSHIPS	38
USEFUL INFORMATION	40

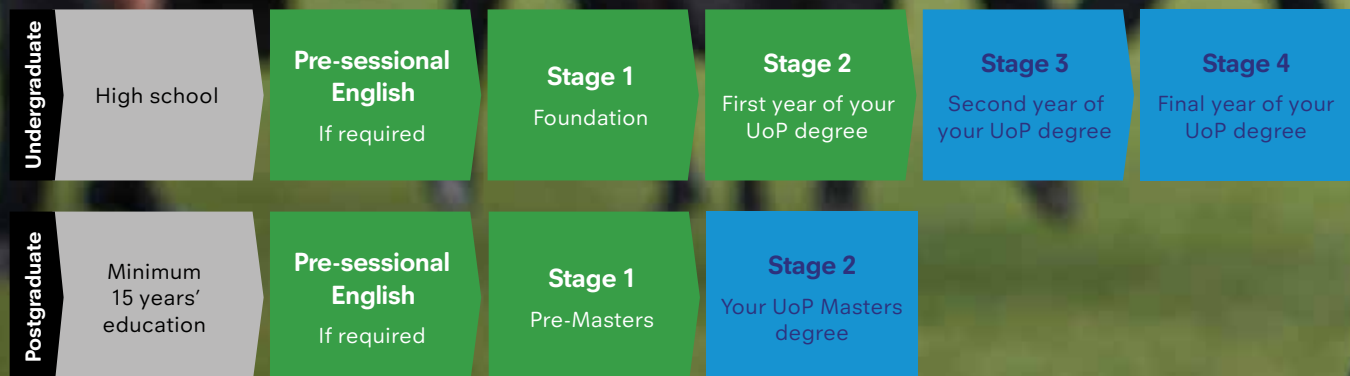
# YOUR PATHWAY TO A UNIVERSITY OF PLYMOUTH DEGREE

Our foundation and pre-Masters programmes lead to a wide range of undergraduate and postgraduate degrees at the University of Plymouth (UoP). PUIC is part of Navitas, a leading global education provider helping students all over the world to achieve their academic goals.



COMPLETION RATE\*

## HOW IT WORKS



# LAUNCH YOUR GLOBAL CAREER AT THE UNIVERSITY OF PLYMOUTH

Study with a  
**TOP 3 UK**  
YOUNG UNIVERSITY†

**TWO-THIRDS OF OUR RESEARCH IS RECOGNISED AS BEING WORLD LEADING OR OF INTERNATIONAL QUALITY‡**

**92% OF GRADUATES GO INTO WORK OR FURTHER STUDY WITHIN SIX MONTHS OF GRADUATING - ONE OF THE HIGHEST EMPLOYABILITY RATES IN THE UK HIGHER EDUCATION SECTOR§**

## CAREERS & EMPLOYABILITY HUB

The University's Careers & Employability Service is based in the Roland Levinsky Building, and can help with:

- Career planning and job searches
- CVs, applications and interviews
- Placements, internships and part-time jobs

Every year more than 300 employers are invited to work with students through careers fairs, guest lectures and presentations, workshops, mentoring and mock interviews.

## PLACEMENTS

A placement year is a great opportunity to gain industry experience and earn a salary. University of Plymouth students have secured placements with world-renowned companies including BAE Systems, The Walt Disney Company and Rolls Royce.

\*PUIIC Completion Data 2017

†Times Higher Education Young University Rankings 2017

‡Research Excellence Framework 2014

§ HESA Destination of Leavers from Higher Education Institutions Survey 2013-14



## STUDENT HOTSPOTS

### 1. Plymouth Hoe

The Hoe is home to Plymouth's iconic lighthouse, Smeaton's Tower, and boasts views across Plymouth Sound. Watch the British Firework Championships or swim at Tinside, the city's Art Deco lido, in the summer.

### 2. The Barbican

A favourite for fish and chips, the historic Barbican is known for its cobbled streets, quirky shops, cafés and bars.

### 3. Dartmoor National Park

If you like the great outdoors then Devon's wild, open moorland is for you. Don't forget your camera!

### 4. Whitsand Bay

Hop on the Torpoint Ferry for sand and sea at Whitsand Bay. This Cornish gem is accessible by bus or car – we recommend a barbecue at Tregantle Cliff Beach.



# YOUR LIFE IN PLYMOUTH, BRITAIN'S OCEAN CITY

Plymouth is a thriving coastal city in the South West, one of the UK's most beautiful regions. Offering the best of city life, with Dartmoor and Cornwall on the doorstep, it's the ideal place to live and study. Everything you need is within walking distance of the University campus – from the multi-million-pound Drake Circus shopping centre, to bars, clubs, restaurants, cinemas and theatres.

“PLYMOUTH IS  
**BRITAIN'S  
COOLEST LITTLE CITY**  
BY THE SEA.”

*GQ MAGAZINE*



PLYMOUTH HAS BEEN  
**VOTED** THE  
**SAFEST STUDENT CITY**  
 IN ENGLAND.

UNBROKEN BRITAIN COMMUNITY SURVEY 2017

# THE CAMPUS

**PUIC is at the heart of the University's main hub, just minutes away from Drake Circus shopping centre. If you need to grab a bite to eat, there are a number of award-winning cafés on campus, offering a range of options including halal.**

## PLYMOUTH'S CITY CENTRE CAMPUS AT A GLANCE:

### 1. International Student Advice (ISA)

ISA offers friendly advice and immigration services for international students.

### 2. Charles Seale-Hayne Library

Open 24/7, the library gives students access to around 500,000 books and multimedia items, 14,000 academic journals and computers.

### 3. The Students' Union (UPSU)

UPSU represents students at all levels, hosting sports clubs and societies, and providing volunteering opportunities, independent advice, food, entertainment and night life.

### 4. Roland Levinsky Building (RLB)

RLB is an iconic, award-winning building with stunning views across the city. *The Huffington Post* named it one of the most beautiful university buildings from around the world.

### 5. Drake's Place

Restored to their former glory, the gardens and reservoir at Drake's Place are perfect spots for a well-deserved study break.







Download  
the SU app!



# YOUR ACCOMMODATION

Accommodation is an important part of your PUIC experience. We have five styles of room, with something to suit every student and every budget.

All of our accommodation is within walking distance of the University's city centre campus - and applying for it couldn't be easier! Every room comes with a complimentary bedding pack and we can arrange to collect you, and your luggage, when you move in.

## HOW TO APPLY

1. Browse our accommodation options and price table at [www.puic.navitas.com/accommodation](http://www.puic.navitas.com/accommodation)
2. Fill out our online application form

## WHAT HAPPENS NEXT?

Your accommodation is allocated on a set date. If you decline your room offer we will find alternative accommodation for you.

cleverstudentlets

TOP 7  
COST-EFFECTIVE  
UK STUDENT CITY  
UNIDAYS 2017





### CLASSIC DOUBLE – STUDENT HOUSE

#### Cost

- 1 semester: £1,650
- 2 semesters: £3,250
- 3 semesters: £4,500

#### Includes

- TV licence
- Utility bills
- Wi-Fi



### EN-SUITE DOUBLE – STUDENT HOUSE

#### Cost

- 1 semester: £2,200
- 2 semesters: £4,350
- 3 semesters: £6,000

#### Includes

- Private bathroom
- TV licence
- Utility bills
- Wi-Fi



### PREMIUM EN-SUITE DOUBLE – HALLS APARTMENTS

#### Cost

- 1 semester: £2,400
- 2 semesters: £4,500
- 3 semesters: £6,250

#### Includes

- Private bathroom
- TV licence
- Utility bills
- Wi-Fi



### CLASSIC STUDIO – PRIVATE APARTMENTS

#### Cost

- 1 semester: £2,500
- 2 semesters: £4,850
- 3 semesters: £6,500

#### Includes

- Private bathroom and kitchen
- TV licence
- Utility bills
- Wi-Fi



### LUXURY STUDIO – PRIVATE APARTMENTS

#### Cost

- 1 semester: £2,750
- 2 semesters: £5,500
- 3 semesters: £7,500

#### Includes

- Private bathroom and kitchen
- TV licence
- Utility bills
- Wi-Fi



# STUDENT SUPPORT

Choosing to study in a different country is exciting, but we understand that it can also be daunting, which is why our dedicated Student Services team are on hand to support you throughout your new adventure.

If you need advice on academic or personal matters, you can drop in to speak to a member of our team at any time. The college also operates a 24/7 emergency helpline, so you never have to face a problem alone.

T: +44 (0) 1752 411 114

E: [student.support@puic.plymouth.ac.uk](mailto:student.support@puic.plymouth.ac.uk)

## ORIENTATION WEEK

The semester kicks off with orientation, giving you time to settle in, meet other students and ask us questions. During your first week, we will take you on a tour of Plymouth and the University campus, and help you with:

- Accommodation
- Enrolment
- English culture and adapting to student life in the UK
- Finance, health and immigration requirements
- Your University of Plymouth student ID card and email account
- Your timetable

## MULTI-FAITH CHAPLAINCY

The University's multi-faith chaplaincy is for everyone on campus – whether you have a faith, are searching for one, or just want to meet new people. The chaplaincy team welcomes students and provides help regardless of religious background or belief. Rooms are available for prayer, meditation or quiet reflection.

T: +44 (0) 1752 587 760

E: [chaplaincy@plymouth.ac.uk](mailto:chaplaincy@plymouth.ac.uk)

W: [www.plymouth.ac.uk/faith](http://www.plymouth.ac.uk/faith)

## YOUR VOICE

We elect a student council every semester. Representatives become part of the College Enhancement Team and have a say in all aspects of college life - from assignments to extra-curricular events.

If you are interested in running, please ask us for more information.

# FOUNDATION PROGRAMMES

## Architecture & the Built Environment

- BA (Hons) Architecture
- BA (Hons) Architectural Technology and the Environment
- BA (Hons) 3D Design
- BSc (Hons) Architectural Engineering
- BSc (Hons) Building Surveying and the Environment
- BSc (Hons) Construction Management and the Environment

## Biological & Biomedical Sciences

- BSc (Hons) Animal Behaviour and Welfare
- BSc (Hons) Biological Sciences
- BSc (Hons) Biomedical Science
- BSc (Hons) Conservation Biology
- BSc (Hons) Environmental Biotechnology
- BSc (Hons) Human Biosciences
- BSc (Hons) Nutrition, Exercise and Health
- BSc (Hons) Psychology
- BSc (Hons) Psychology with Criminology and Criminal Justice Studies
- BSc (Hons) Psychology with Human Biology
- BSc (Hons) Psychology with Sociology

## Business & Management

- BA (Hons) Accounting and Finance
- BA (Hons) Business
- BA (Hons) International Business
- BSc (Hons) Business Economics
- BSc (Hons) Business Management (three-year course)
- BSc (Hons) Business Management (two-year fast track)
- BSc (Hons) Economics
- BSc (Hons) Economics with Law
- BSc (Hons) Maritime Business and Logistics
- BSc (Hons) Maritime Business and Maritime Law
- BSc (Hons) Marketing

## Computing & Mathematical Sciences

- BSc (Hons) Computing
- BSc (Hons) Computer and Information Security
- BSc (Hons) Computer Science
- BSc (Hons) Computer Systems and Networks
- BSc (Hons) Data Modelling and Analytics
- BSc (Hons) Mathematics
- BSc (Hons) Mathematics with Education
- BSc (Hons) Mathematics with Finance
- BSc (Hons) Mathematics and Statistics

## Earth, Geography & Environment

- BSc (Hons) Applied Geology
- BSc (Hons) Environmental Management and Sustainability
- BSc (Hons) Environmental Science
- BSc (Hons) Geology
- BSc (Hons) Physical Geography and Geology

## Engineering & Robotics

- BEng (Hons) Civil Engineering
- BEng (Hons) Civil and Coastal Engineering
- BEng (Hons) Electrical and Electronic Engineering
- BEng (Hons) Marine Technology
- BEng (Hons) Mechanical Engineering
- BEng (Hons) Mechanical Engineering with Composites
- BEng (Hons) Robotics
- BSc (Hons) Electrical and Electronic Engineering
- BSc (Hons) Robotics

## Health & Human Sciences

- BSc (Hons) Adult Nursing
- BSc (Hons) Child Health Nursing
- BSc (Hons) Dietetics
- BSc (Hons) Mental Health Nursing
- BSc (Hons) Occupational Therapy
- BSc (Hons) Optometry
- BSc (Hons) Paramedic Practitioner
- BSc (Hons) Physiotherapy
- BSc (Hons) Podiatry

## Law, Government & Society

- BSc (Hons) Criminology and Criminal Justice Studies with Law
- BSc (Hons) International Relations with Law
- BSc (Hons) Politics with International Relations
- LLB (Hons) Law
- LLB (Hons) Law with Criminology and Criminal Justice Studies

## Marine & Ocean

- BSc (Hons) Marine Biology
- BSc (Hons) Marine Biology and Coastal Ecology
- BSc (Hons) Marine Biology and Oceanography
- BSc (Hons) Navigation and Maritime Science
- BSc (Hons) Oceanography and Coastal Processes
- BSc (Hons) Ocean Exploration and Surveying
- BSc (Hons) Ocean Science and Marine Conservation

## Tourism & Hospitality

- BSc (Hons) Business and Tourism
- BSc (Hons) Cruise Management
- BSc (Hons) Hospitality Management
- BSc (Hons) International Hospitality Management
- BSc (Hons) International Tourism Management
- BSc (Hons) Tourism Management
- BSc (Hons) Tourism and Hospitality Management

# PRE-MASTERS PROGRAMMES

## Business & Management

- MA Human Resource Management
- MSc Accounting and Finance
- MSc Brand and Design Management
- MSc Business and Management
- MSc Digital and Social Media Marketing
- MSc Entrepreneurship
- MSc Entrepreneurship and International Development

- MSc Finance
- MSc Finance and Investment
- MSc International Business
- MSc Management
- MSc Operations and Supply Chain Management

## Data & Computer Sciences

- MSc Computer Sciences (Conversion)
- MSc Data Science and Business Analytics

## Publishing

- MA Publishing

## Tourism & Hospitality

- MSc International Hospitality Management
- MSc Tourism and Hospitality Management



# FOUNDATION PROGRAMMES

**Our foundation programmes are designed to help you develop the level of English language, study skills and subject knowledge that you will need to succeed in your University of Plymouth Bachelors degree.**



---

Architecture & the Built Environment

---

Biological & Biomedical Sciences

---

Business & Management

---

Computing & Mathematical Sciences

---

Earth, Geography & Environment

---

Engineering & Robotics

---

Health & Human Sciences

---

Law, Government & Society

---

Marine & Ocean

---

Tourism & Hospitality

# ARCHITECTURE AND DESIGN

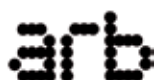
Access industry-leading technology and work on real projects in real spaces with real people. Degrees are validated by the Royal Institute of British Architects (RIBA) and Lembaga Arkitek Malaysia (LAM), and prescribed by the Architects Registration Board (ARB).

## Leads to:

- BA (Hons) Architecture
- BA (Hons) Architectural Technology and the Environment
- BA (Hons) 3D Design
- BSc (Hons) Architectural Engineering\*

## Career opportunities

Graduates have gone on to work for Dyson, Foster + Partners, LEGO, Next Interiors and Princess Yachts.



## Special features

Successful completion of this degree exempts students from RIBA Part 1

No portfolio required

## Stage 1: Foundation

### Location

PUIC at the University of Plymouth

### Duration

Two semesters

### Intakes

September and January

### Modules

- Academic Writing
- Design Culture
- Interactive Learning Skills and Communication
- Practical Design Skills
- Principles of ICT

∴ **ARCHITECTURE AT THE UNIVERSITY OF PLYMOUTH WAS RANKED 15<sup>TH</sup>**

∴ IN THE *GUARDIAN UNIVERSITY GUIDE 2017*.

## Stage 2: First year of degree

### Location

University of Plymouth

### Intake

September

## Stage 3: Second year of degree

### Location

University of Plymouth

## Stage 4: Final year of degree

### Location

University of Plymouth



**“THE BEST THING ABOUT STUDYING AT PUIC IS THE SUPPORT YOU RECEIVE; THE TUTORS ARE BRILLIANT. MY DEGREE IS A GOOD MIX OF CREATIVE ARCHITECTURAL DESIGN AND ENGINEERING, I LOVE LIVING BY THE SEA AND I’VE GOT A PART-TIME JOB IN CUSTOMER SERVICE HERE.”**

Marwan Aly Abdelrahman Aly, Egypt  
BSc (Hons) Architectural Engineering

\* For Architectural Engineering modules, please see page 25.



# CONSTRUCTION MANAGEMENT AND BUILDING SURVEYING

Lay the foundations for a successful construction career with a degree accredited by the Chartered Institute of Building (CIOB) and Chartered Association of Building Engineers (CABE). You will develop a specialist understanding of project management through a combination of lectures, field trips and site visits.

## Leads to:

- BSc (Hons) Building Surveying and the Environment
- BSc (Hons) Construction Management and the Environment

## Career opportunities

Graduates have gone on to work for BAM, EC Harris, Faithful + Gould, the Houses of Parliament, Kier, ISG and Midas.



## Special features

Optional placement year

## Stage 1: Foundation

### Location

PUIC at the University of Plymouth

### Duration

Two semesters

### Intakes

September and January

### Modules

- Business Studies
- Chemistry
- Interactive Learning Skills and Communication
- Numerical Techniques 1
- Numerical Techniques 2
- Physics
- Principles of ICT

## Stage 2: First year of degree

### Location

University of Plymouth

### Intakes

September

## Stage 3: Second year of degree

### Location

University of Plymouth

## Stage 4: Final year of degree

### Location

University of Plymouth

... **BUILDING AT**  
... **THE UNIVERSITY OF PLYMOUTH WAS**  
... **RANKED 6<sup>TH</sup>**  
... **IN THE *TIMES AND SUNDAY TIMES UNIVERSITY LEAGUE TABLE 2015.***



**“PUIC IS A HOME FROM HOME. THE SITE VISITS ON MY COURSE HAVE GIVEN ME A REALLY GOOD INSIGHT INTO THE INDUSTRY AND I WOULD LOVE TO MANAGE A CONSTRUCTION COMPANY IN THE FUTURE.”**

Amr Shaker, Egypt  
BSc (Hons) Construction Management and the Environment



# BIOLOGICAL AND BIOMEDICAL SCIENCES

The University of Plymouth champions experiential learning in the laboratory and in the field. Our Foundation in Biological and Biomedical Sciences will prepare you for a wide range of specialisms - from animal behaviour and human biosciences to psychology.

## Leads to:

- BSc (Hons) Animal Behaviour and Welfare
- BSc (Hons) Biological Sciences
- BSc (Hons) Biomedical Science
- BSc (Hons) Conservation Biology
- BSc (Hons) Environmental Biotechnology
- BSc (Hons) Human Biosciences
- BSc (Hons) Nutrition, Exercise and Health
- BSc (Hons) Psychology
- BSc (Hons) Psychology with Criminology and Criminal Justice Studies
- BSc (Hons) Psychology with Human Biology
- BSc (Hons) Psychology with Sociology

## Career opportunities

Graduates have gone on to work for the Eden Project, NHS and Thermo Fisher Scientific.

## Special features

Optional placement year

## Stage 1: Foundation

### Location

PUIC at the University of Plymouth

### Duration

Two or three semesters

### Intakes

September and January

### Modules

- Biology
- Chemistry
- Interactive Learning Skills and Communication
- Numerical Techniques 1
- Numerical Techniques 2
- Physics
- Practical Methods in Science and Technology
- Principles of ICT

## Stage 2: First year of degree

### Location

University of Plymouth

### Intakes

September

## Stage 3: Second year of degree

### Location

University of Plymouth

## Stage 4: Final year of degree

### Location

University of Plymouth



# ACCOUNTING AND FINANCE



Make your mark in the world of business. You will explore the latest developments in the field and master the complex set of skills required for a career in accounting and finance, graduating with credits towards your professional qualification.

## Leads to:

- BA (Hons) Accounting and Finance

## Career opportunities

Graduates have gone on to work for KPMG and PwC .



## Special features

First year direct entry available

## Stage 1: Foundation

### Location

PUIC at the University of Plymouth

### Duration

One or two semesters

### Intakes

September, January and May

### Modules

- Accounting
- Business Law
- Business Studies
- Economics
- Interactive Learning Skills and Communication
- Numerical Techniques 1
- Numerical Techniques 2

## Stage 2: First year of degree

### Location

PUIC at the University of Plymouth

### Intakes

September and January

## Stage 3: Second year of degree

### Location

University of Plymouth

## Stage 4: Final year of degree

### Location

University of Plymouth



# BUSINESS



Are you a future business leader? Fast-track your way to industry success with our Foundation in Business and progress to a professionally accredited degree that will develop your entrepreneurial, management and financial skills.

### Leads to:

- BA (Hons) Business
- BA (Hons) International Business
- BSc (Hons) Business Management (three-year course)
- BSc (Hons) Business Management (two-year fast track)

*First year direct entry available for all courses.*

### Career opportunities

Graduates have gone on to work for Deutsche Bank, Gillette, HSBC, Intel, KPMG, MasterCard, Rolls-Royce, Royal Bank of Scotland, Shell, Siemens, Toshiba and Unilever.

... **2-YEAR**  
 ... *BUSINESS*  
 ... *MANAGEMENT*  
 ... **FAST TRACK AVAILABLE.\***

*\* Higher entry requirements apply.*

### Special features

Placement year - mandatory for BA (Hons) International Business and optional for all other courses

### Stage 1: Foundation

#### Location

PUIC at the University of Plymouth

#### Duration

One or two semesters

#### Intakes

September, January and May

#### Modules

- Accounting
- Business Law
- Business Management
- Business Studies
- Economics
- Interactive Learning Skills and Communication
- Numerical Techniques 1
- Principles of ICT

### Stage 2: First year of degree

#### Location

PUIC at the University of Plymouth

#### Duration

Two semesters

#### Intakes

September and January

### Stage 3: Second year of degree

#### Location

University of Plymouth

### Stage 4: Final year of degree

#### Location

University of Plymouth



Whether you want to be a financial forecaster, a researcher or a leader of industry, our engaging economics programme will prepare you for your University of Plymouth degree. You will develop essential analytical and numerical skills, along with a solid understanding of micro and macro behaviour.

## Leads to:

- BSc (Hons) Business Economics
- BSc (Hons) Economics
- BSc (Hons) Economics with Law

*First year direct entry available for all courses.*

## Career opportunities

Graduates have gone on to work for EY, HM Treasury and KPMG.

## Special features

Optional placement year

## Stage 1: Foundation

### Location

PUIC at the University of Plymouth

### Duration

One or two semesters

### Intakes

September, January and May

### Modules

- Accounting
- Business Law
- Business Studies
- Economics
- Interactive Learning Skills and Communication
- Numerical Techniques 1
- Numerical Techniques 2
- Principles of ICT

## Stage 2: First year of degree

### Location

PUIC at the University of Plymouth

### Duration

Two semesters

### Intakes

September and January

## Stage 3: Second year of degree

### Location

University of Plymouth

## Stage 4: Final year of degree

### Location

University of Plymouth



# MARITIME BUSINESS AND LOGISTICS



English-speaking shipping experts are in demand all over the world. Launch your maritime career with a foundation programme that will prepare you for a degree focused on shipping, ports, seaborne trade and logistics systems.

### Leads to:

- BSc (Hons) Maritime Business and Logistics
- BSc (Hons) Maritime Business and Maritime Law

*First year direct entry available for both courses.*

### Career opportunities

Graduates have gone on to work for Bayraktar Shipping Group, Georg Duncker, Institute of Chartered Shipbrokers (ICS) and Throme Group.



### Special features

Optional placement year

### Stage 1: Foundation

**Location**  
PUIC at the University of Plymouth

**Duration**  
One or two semesters

**Intakes**  
September, January and May

- Modules**
- Accounting
  - Business Law
  - Business Management
  - Business Studies
  - Economics
  - Interactive Learning Skills and Communication
  - Numerical Techniques 1
  - Principles of ICT

### Stage 2: First year of degree

**Location**  
PUIC at the University of Plymouth

**Intakes**  
September and January

### Stage 3: Second year of degree

**Location**  
University of Plymouth

### Stage 4: Final year of degree

**Location**  
University of Plymouth



**62.5% GRADUATED**  
*WITH A FIRST OR 2:1 IN 2017.*

UNIVERSITY OF PLYMOUTH GRADUATION DATA 2017

Graduate as a skilled communicator with a flair for marketing strategy. Our foundation will prepare you for the University of Plymouth's fully accredited course and a high-flying career in advertising, brand and marketing management, public relations, marketing research or sales.

## Leads to:

- BSc (Hons) Marketing

## Career opportunities

Graduates have gone on to work for Apple, BBC, Barclaycard, British Airways, Unilever, the National Trust and Microsoft.



## Special features

First year direct entry available

Optional placement year

Option to specialise in non-profit and charity fundraising in your final year\*

## Stage 1: Foundation

### Location

PUIC at the University of Plymouth

### Duration

One or two semesters

### Intakes

September, January and May

### Modules

- Accounting
- Business Law
- Business Management
- Business Studies
- Economics
- Interactive Learning Skills and Communication
- Numerical Techniques 1
- Principles of ICT

## Stage 2: First year of degree

### Location

PUIC at the University of Plymouth

### Intakes

September and January

## Stage 3: Second year of degree

### Location

University of Plymouth

## Stage 4: Final year of degree

### Location

University of Plymouth

*\*Graduates in this pathway also benefit from maximum exemption from the Institute of Fundraising's Certificate in Fundraising.*



# COMPUTING



Modern life relies on computer networks and cyber security has become an international priority. After completing our Foundation in Computing, you will progress to the University of Plymouth degree of your choice and train as a creative and resourceful specialist, benefiting from advanced, industry-standard facilities and British Computer Society (BCS) accreditation.

## Leads to:

- BSc (Hons) Computing
- BSc (Hons) Computer and Information Security
- BSc (Hons) Computer Science
- BSc (Hons) Computer Systems and Networks

## First year direct entry available

- BSc (Hons) Computing

## Career opportunities

Graduates have gone on to work for Allianz Insurance, Cisco, Invenias, Microsoft and Sophos.



## Special features

Optional placement year

Final year computing project tackling a major industry problem

## Stage 1: Foundation

### Location

PUIC at the University of Plymouth

### Duration

Two semesters

### Intakes

September and January

### Modules

- Business Studies
- Interactive Learning Skills and Communication
- Numerical Techniques 1
- Numerical Techniques 2
- Physics 1
- Principles of ICT
- Programming Techniques
- Scientific Methods

## Stage 2: First year of degree

### Location

University of Plymouth

### Intakes

September

## Stage 3: Second year of degree

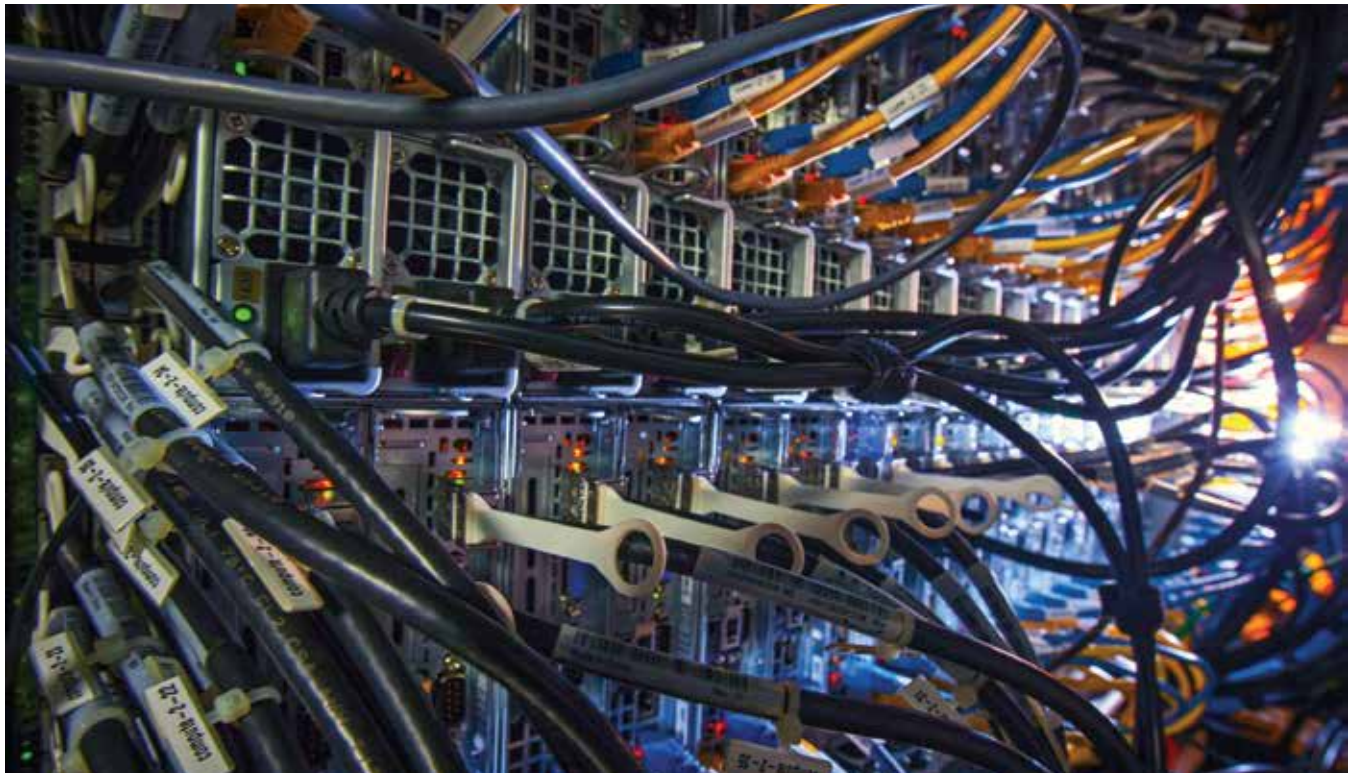
### Location

University of Plymouth

## Stage 4: Final year of degree

### Location

University of Plymouth





# MATHEMATICAL SCIENCES

Exploring the beauty of mathematics trains you to think systematically and creatively. The University's flexible degrees allow you to choose modules that reflect the direction you want your career to go in. Graduates acquire extensive transferable skills and are highly employable.

## Leads to:

- BSc (Hons) Data Modelling and Analytics
- BSc (Hons) Mathematics
- BSc (Hons) Mathematics with Education
- BSc (Hons) Mathematics with Finance
- BSc (Hons) Mathematics and Statistics

## Career opportunities

Graduates have gone on to work for Deloitte, KPMG, Lloyds Banking Group, the Met Office, Primark and Siemens.



## Special features

Optional placement year

## Stage 1: Foundation

### Location

PUIC at the University of Plymouth

### Duration

Two semesters

### Intakes

September and January

### Modules

- Business Studies
- Interactive Learning Skills and Communication
- Numerical Techniques 1
- Numerical Techniques 2
- Physics 1
- Principles of ICT
- Programming Techniques
- Scientific Methods

## Stage 2: First year of degree

### Location

University of Plymouth

### Intakes

September

## Stage 3: Second year of degree

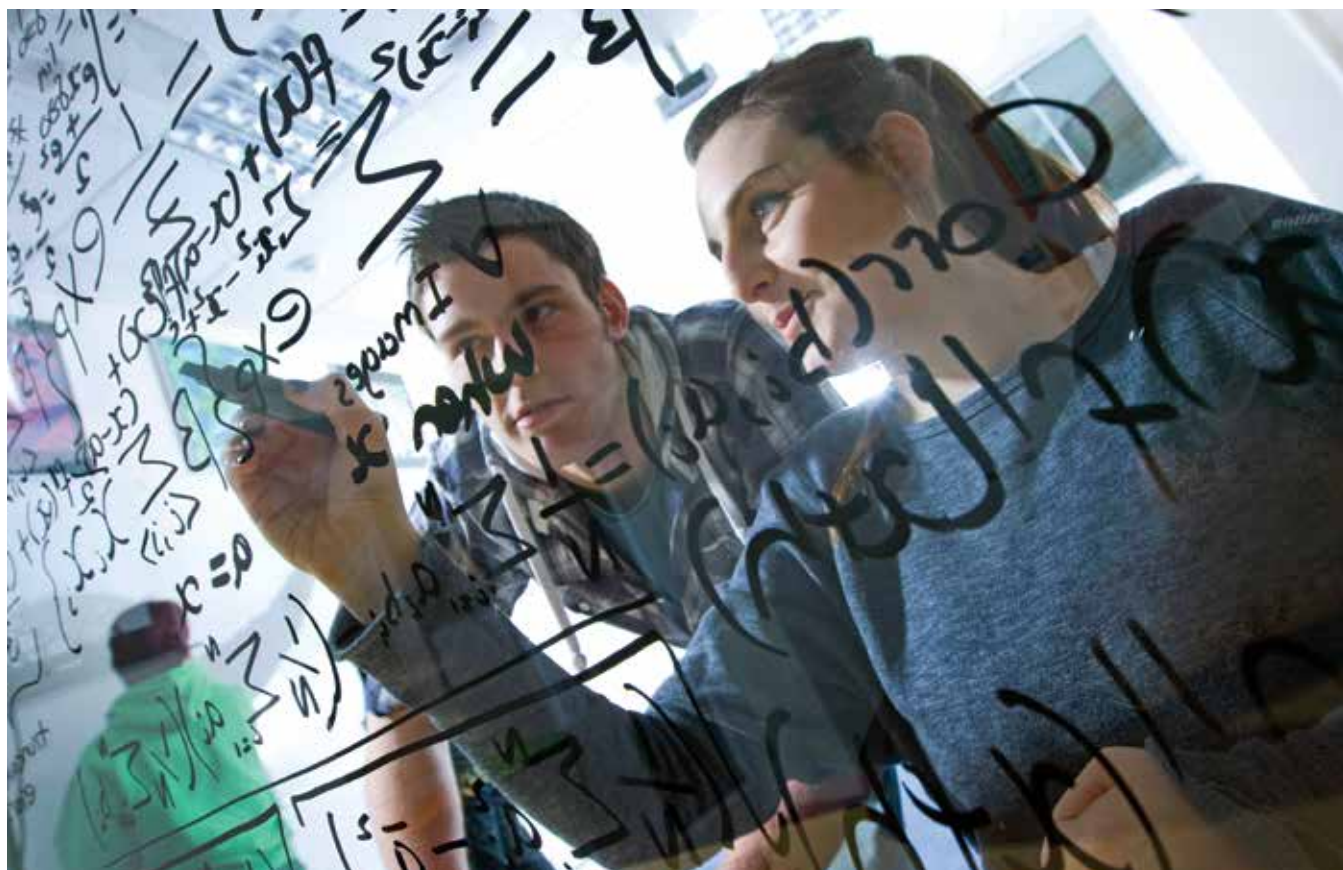
### Location

University of Plymouth

## Stage 4: Final year of degree

### Location

University of Plymouth



# ENVIRONMENTAL SCIENCE



Gain entry to a degree that will give you the ability to turn theory into practical solutions to real-world environmental problems. Pursue your interests with specialist modules, and boost your employability with professional accreditation.

## Leads to:

- BSc (Hons) Applied Geology
- BSc (Hons) Environmental Biotechnology
- BSc (Hons) Environmental Management and Sustainability
- BSc (Hons) Environmental Science
- BSc (Hons) Physical Geography and Geology

## First year direct entry available

- BSc (Hons) Environmental Biotechnology
- BSc (Hons) Environmental Science

## Career opportunities

Graduates have gone on to work for the Eden Project, Fugro, Geolog International, Hydro-Logic, Royal Botanic Gardens and Terra Search Pty.



**The Geological Society**  
Accredited degree course

## Special features

- Overseas fieldwork opportunities
- Optional placement year

## Stage 1: Foundation

**Location**  
PUIC at the University of Plymouth

**Duration**  
Two semesters

**Intakes**  
September and January

- Modules**
- Biology
  - Chemistry
  - Interactive Learning Skills and Communication
  - Numerical Techniques 1
  - Numerical Techniques 2
  - Physics
  - Principles of ICT
  - Scientific Methods

## Stage 2: First year of degree

**Location**  
University of Plymouth

**Intakes**  
September

## Stage 3: Second year of degree

**Location**  
University of Plymouth

## Stage 4: Final year of degree

**Location**  
University of Plymouth



# ENGINEERING AND ROBOTICS



Take the first step to becoming a highly-sought-after engineering graduate with a foundation programme that will help you reach your potential. Gain access to internationally recognised experts and the largest number of humanoid robots in Europe.

## Leads to:

- BEng (Hons) Civil Engineering
- BEng (Hons) Civil and Coastal Engineering
- BEng (Hons) Electrical and Electronic Engineering
- BEng (Hons) Marine Technology
- BEng (Hons) Mechanical Engineering
- BEng (Hons) Mechanical Engineering with Composites
- BEng (Hons) Robotics
- BSc (Hons) Electronic and Electrical Engineering
- BSc (Hons) Robotics

## First year direct entry available

- BSc (Hons) Electronic and Electrical Engineering

## Career opportunities

Graduates have gone on to work for Babcock, BAE Systems, Ferrari, Princess Yachts, Ministry of Defence, Rolls-Royce, Vospers and Williams Grand Prix Engineering.

## Special features

Optional placement year

## Stage 1: Foundation

### Location

PUIC at the University of Plymouth

### Duration

Two semesters

### Intakes

September and January

### Modules

- Interactive Learning Skills and Communication
- Materials and Mechanics or Programming Techniques
- Numerical Techniques 1
- Numerical Techniques 3
- Physics 1
- Physics 2
- Principles of ICT
- Scientific Methods

## Stage 2: First year of degree

### Location

University of Plymouth

### Intakes

September

## Stage 3: Second year of degree

### Location

University of Plymouth

## Stage 4: Final year of degree

### Location

University of Plymouth



**"STUDYING AT PUIC WAS GREAT. THEY GAVE US SO MUCH SUPPORT, IN SMALL CLASSES, TO ENSURE THAT WE WERE READY FOR UNIVERSITY. I FELT LIKE I WAS BETTER PREPARED THAN STUDENTS JOINING THE COURSE IN FIRST YEAR."**

Falah Alajmi, Kuwait  
BEng (Hons) Mechanical Engineering

# SCIENCE AND ENGINEERING (THREE SEMESTERS)

Are you fascinated by a science or engineering subject but struggling to meet our IELTS requirement? This three-semester foundation gives you extra time to develop university-standard English while preparing you for a broad range of undergraduate degrees.\*

## Leads to:

### Biological and Biomedical Sciences

- BSc (Hons) Animal Behaviour and Welfare
- BSc (Hons) Biological Sciences
- BSc (Hons) Biomedical Science
- BSc (Hons) Conservation Biology
- BSc (Hons) Environmental Biotechnology
- BSc (Hons) Human Biosciences
- BSc (Hons) Nutrition, Exercise and Health
- BSc (Hons) Psychology
- BSc (Hons) Psychology with Criminology and Criminal Justice Studies
- BSc (Hons) Psychology with Human Biology
- BSc (Hons) Psychology with Sociology

### Building and Construction

- BSc (Hons) Building Surveying and the Environment
- BSc (Hons) Construction Management and the Environment

### Computing

- BSc (Hons) Computing
- BSc (Hons) Computer and Information Security
- BSc (Hons) Computer Science
- BSc (Hons) Computer Systems and Networks

### Engineering

- BEng (Hons) Civil Engineering
- BEng (Hons) Civil and Coastal Engineering
- BEng (Hons) Electrical and Electronic Engineering
- BEng (Hons) Marine Technology
- BEng (Hons) Mechanical Engineering
- BEng (Hons) Mechanical Engineering with Composites
- BSc (Hons) Architectural Engineering
- BSc (Hons) Electronic and Electrical Engineering

### Environmental Sciences

- BSc (Hons) Applied Geology
- BSc (Hons) Environmental Science
- BSc (Hons) Geology
- BSc (Hons) Physical Geography and Geology

### Navigation, Marine and Ocean

- BSc (Hons) Marine Biology
- BSc (Hons) Marine Biology and Coastal Ecology
- BSc (Hons) Marine Biology and Oceanography
- BSc (Hons) Navigation and Maritime Science
- BSc (Hons) Oceanography and Coastal Processes
- BSc (Hons) Ocean Exploration and Surveying
- BSc (Hons) Ocean Science and Marine Conservation

### Robotics

- BEng (Hons) Robotics
- BSc (Hons) Robotics

## Career opportunities

Graduates have gone on to work for Babcock, BAE Systems, the Houses of Parliament, Royal Botanic Gardens, Marine Biological Association and Microsoft.

## Special features

IELTS requirement: 5.0†

## Stage 1: Foundation

### Location

PUIC at the University of Plymouth

### Duration

Three semesters

### Intakes

September

### Modules

- Academic Writing
- PUIC and University of Plymouth English clubs
- Numerical Techniques for Business
- Research Report
- **Semester 2** - Modules are the same as the two-semester foundation for your chosen degree
- **Semester 3** - Modules are the same as the two-semester foundation for your chosen degree

## Stage 2: First year of degree

### Location

University of Plymouth

### Intakes

September

## Stage 3: Second year of degree

### Location

University of Plymouth

## Stage 4: Final year of degree

### Location

University of Plymouth

*\*If you are a Kuwaiti student seeking sponsorship, please note that Kuwaiti Cultural Office (KCO) restrictions will apply.*

*† With no less than 4.5 in any discipline.*

*‡ Students who successfully complete this NQF3 programme are required to apply for a second visa before they can progress to NQF6.*



# HEALTH AND HUMAN SCIENCES

Do you want to make a difference to people's lives? Our Foundation in Health and Human Sciences will prepare you for a rewarding degree – whether you are interested in caring for adults with acute and long-term illnesses, or in healthy eating, nutrition and lifestyle. Your learning is enhanced by work-based placements, the University's partnership with local NHS trusts and the Peninsula Allied Health Centre, a multi-million-pound facility for students.\*

## Leads to:

- BSc (Hons) Adult Nursing
- BSc (Hons) Child Health Nursing
- BSc (Hons) Dietetics
- BSc (Hons) Mental Health Nursing
- BSc (Hons) Occupational Therapy
- BSc (Hons) Optometry
- BSc (Hons) Paramedic Practitioner
- BSc (Hons) Physiotherapy
- BSc (Hons) Podiatry

## Career opportunities

Graduates have gone on to work for the NHS, South East Coast and South Western Ambulance Services, Swansea City Football Club and Vision Express.

*\*Additional requirements apply in order to progress from foundation to degree: Certificate of Good Character/DBS check, NHS VBR interview and Occupational Health clearance.*

## Special features

Tailored English language module covering technical industry vocabulary

## Stage 1: Foundation

### Location

PUIC at the University of Plymouth

### Duration

Three semesters

### Intakes

September

### Modules

- Interactive Learning Skills and Communication
- Principles of ICT
- Targeted English Language 1

### Semester 2

- Biology
- Numerical Techniques 1
- Physics
- Targeted English Language 2

### Semester 3

- Chemistry
- Numerical Techniques 2
- Practical Methods in Science and Technology
- Targeted English Language 3

## Stage 2: First year of degree

### Location

University of Plymouth

### Intakes

September

## Stage 3: Second year of degree

### Location

University of Plymouth

## Stage 4: Final year of degree

### Location

University of Plymouth



# INTERNATIONAL RELATIONS AND POLITICS

We live in a diverse and complex world. Immerse yourself in the fascinating ideologies and debates that influence 21st century life, examine relationships between nations, and learn how politics has shaped our past and continues to shape our future.

## Leads to:

- BSc (Hons) International Relations with Politics
- BSc (Hons) Politics with International Relations

## Career opportunities

Graduates have gone on to work for the European Union, UK Civil Service and the United Nations.

## Special features

The Friendship Initiative Programme connects leaders from organisations such as the NHS and Virgin Atlantic with students, offering networking and mentoring opportunities

## Stage 2: First year of degree

### Location

University of Plymouth

### Intakes

September

## Stage 1: Foundation

### Location

PUIC at the University of Plymouth

### Duration

One or two semesters

### Intakes

September and January

### Modules

- Accounting
- Business Law
- Business Management
- Business Studies
- Economics
- Interactive Learning Skills and Communication
- Numerical Techniques 1
- Principles of ICT

## Stage 3: Second year of degree

### Location

University of Plymouth

## Stage 4: Final year of degree

### Location

University of Plymouth



**"MY PROUDEST ACHIEVEMENTS TO DATE HAVE BEEN ATTENDING THE 2017 SUMMER YOUTH ASSEMBLY AT THE UNITED NATIONS HEADQUARTERS IN NEW YORK AND BEING APPOINTED THE VC OF THE EQUESTRIAN SOCIETY. AFTER I GRADUATE I WANT TO CREATE AND IMPLEMENT POLICIES."**

Nimota Arigbabu, Nigeria  
BSc (Hons) International Relations with Politics



Set your sights high with our Foundation in Law. The University of Plymouth Law School has strong public and private sector connections, and you can decide whether you want to qualify for the legal profession (LLB) or not (BSc). Students who choose a Criminology and Criminal Justice Studies pathway will examine how and why people commit crime, and how we, as a society, deal with criminality.

## Leads to:

- BSc (Hons) Criminology and Criminal Justice Studies with Law
- BSc (Hons) International Relations with Law
- LLB (Hons) Law
- LLB (Hons) Law with Criminology and Criminal Justice Studies

## Career opportunities

Graduates have gone on to work for Apple, BBC, Barclaycard, British Airways, Unilever, the National Trust and Microsoft.

## Special features

The University of Plymouth Law Clinic gives students the opportunity to offer real advice and representation to real clients

## Stage 1: Foundation

### Location

PUIC at the University of Plymouth

### Duration

Two semesters

### Intakes

September, January and May

### Modules

- Academic Writing for Law
- Business Law
- Business Studies
- Constitutional Law
- Contract Law
- Interactive Learning Skills and Communication
- Legal Skills and the English Legal System
- Principles of ICT

## Stage 2: First year of degree

### Location

University of Plymouth

### Intakes

September

## Stage 3: Second year of degree

### Location

University of Plymouth

## Stage 4: Final year of degree

### Location

University of Plymouth



**“AFTER COMPLETING PUIC’S FOUNDATION IN LAW, I PROGRESSED ONTO THE LLB (HONS) DEGREE AT THE UNIVERSITY OF PLYMOUTH. I’M CURRENTLY TAKING A YEAR OUT TO ACT AS VP INTERNATIONAL AND OUTREACH FOR THE STUDENTS’ UNION, AND TOTALLY LOVING IT! I STILL HOPE TO TRAIN AS A LAWYER ONCE I’VE GRADUATED.”**

Hadiza Adah, Nigeria  
LLB (Hons) Law

# NAVIGATION, MARINE AND OCEAN



Home to Europe's largest marine institute and the only university-based diving and marine centre in the UK, Plymouth's coastal location provides the perfect setting for navigation, marine and ocean studies.

## Leads to:

- BSc (Hons) Marine Biology
- BSc (Hons) Marine Biology and Coastal Ecology
- BSc (Hons) Marine Biology and Oceanography
- BSc (Hons) Navigation and Maritime Science
- BSc (Hons) Oceanography and Coastal Processes
- BSc (Hons) Ocean Exploration and Surveying
- BSc (Hons) Ocean Science and Marine Conservation

## First year direct entry available

- BSc (Hons) Oceanography and Coastal Processes
- BSc (Hons) Ocean Exploration and Surveying
- BSc (Hons) Ocean Science and Marine Conservation

## Career opportunities

Graduates have gone on to work for Babcock, Canadian Ocean Racing, Marine Biological Association, Marine Scotland Science, Ministry of Defence, Princess Yachts, The British Antarctic Survey and Westcountry Rivers.



## Special features

£19m marine building with state-of-the-art facilities, including a full-size ship simulator and wave basin

Fieldwork opportunities

Optional placement year

## Stage 1: Foundation

### Location

PUIC at the University of Plymouth

### Duration

Two semesters

### Intakes

September and January

### Modules

- Biology
- Chemistry
- Interactive Learning Skills and Communication
- Numerical Techniques 1
- Numerical Techniques 2
- Physics
- Principles of ICT
- Scientific Methods

## Stage 2: First year of degree

### Location

University of Plymouth

### Intakes

September

## Stage 3: Second year of degree

### Location

University of Plymouth

## Stage 4: Final year of degree

### Location

University of Plymouth



**"I'M ON TRACK FOR A FIRST AND WANT TO GET A PHD. MY BIGGEST ACHIEVEMENT HAS BEEN WORKING ON A PROJECT WITH PLYMOUTH MARINE LABORATORY."**

Anastasiia Barilo, Russia  
BSc (Hons) Marine Biology



# HOSPITALITY



This course is your passport to a hotel school with a network of high-profile industry partners, including Millennium & Copthorne Hotels and Hilton Hotels. You will graduate with real business acumen, giving you a competitive advantage in the job market.

## Leads to:

- BSc (Hons) Cruise Management
- BSc (Hons) Hospitality Management
- BSc (Hons) International Hospitality Management

*First year direct entry available for all courses.*

## Career opportunities

Graduates have gone on to work for Hilton, Marriott, Sheraton and Sodexo.

## Special features

Optional placement year

## Stage 1: Foundation

### Location

PUIC at the University of Plymouth

### Duration

One or two semesters

### Intakes

September, January and May

### Modules

- Academic Writing
- Accounting
- Business Law
- Business Studies
- Economics
- Interactive Learning Skills and Communication
- Numerical Techniques 1
- Principles of ICT

## Stage 2: First year of degree

### Location

PUIC at the University of Plymouth

### Intakes

September and January

## Stage 3: Second year of degree

### Location

University of Plymouth

## Stage 4: Final year of degree

### Location

University of Plymouth



# TOURISM



Whether you see yourself working in a five-star luxury hotel or for a national tourist board, a professionally accredited tourism degree will set you in the right direction. With a strong emphasis on business and management, your University of Plymouth course will prepare you for an exciting future in a fast-paced global industry.

### Leads to:

- BSc (Hons) Business and Tourism
- BSc (Hons) International Tourism Management
- BSc (Hons) Tourism Management
- BSc (Hons) Tourism and Hospitality Management

*First year direct entry available for all courses.*

### Career opportunities

Graduates have gone on to work for Kempinski Hotels, Luxury Group and Hotel N°5, Malaysia, as well as regional and national tourism authorities.

### Special features

Optional placement year

### Stage 1: Foundation

#### Location

PUIC at the University of Plymouth

#### Duration

One or two semesters

#### Intakes

September, January and May

#### Modules

- Academic Writing
- Accounting
- Business Law
- Business Studies
- Economics
- Interactive Learning Skills and Communication
- Numerical Techniques 1
- Principles of ICT

### Stage 2: First year of degree

#### Location

PUIC at the University of Plymouth

#### Intakes

September and January

### Stage 3: Second year of degree

#### Location

University of Plymouth

### Stage 4: Final year of degree

#### Location

University of Plymouth





## PRE-MASTERS PROGRAMMES

Our pre-Masters programmes lead to postgraduate degrees at the University of Plymouth. If you are missing the requirements for direct entry to a UK Masters, we will prepare you for further study in your chosen field.

One-semester programmes are available in:

- Business & Management
- Data & Computer Sciences
- Publishing
- Tourism & Hospitality



**"I CHOSE PUIC BECAUSE THE GRADE THAT I ACHIEVED IN MY DEGREE WAS NOT QUITE HIGH ENOUGH TO GO STRAIGHT ONTO MY MASTERS COURSE."**

Aoran Shen, China  
MSc Business and Management



## BUSINESS & MANAGEMENT

Boost your career prospects with our Pre-Masters in Business & Management – whether your ultimate goal is to become part of the next generation of entrepreneurs, broaden your knowledge of financial strategies or help businesses get the best out of their people.

### Leads to:

- MA Human Resource Management
- MSc Accounting and Finance
- MSc Brand and Design Management
- MSc Business and Management
- MSc Digital and Social Media Marketing
- MSc Entrepreneurship
- MSc Entrepreneurship and International Development
- MSc Finance
- MSc Finance and Investment
- MSc International Business
- MSc Management
- MSc Operations and Supply Chain Management

### Career opportunities

Graduates have gone on to work for EY and Rendall & Rittner.

### Stage 1: Pre-Masters

#### Location

PUIC at the University of Plymouth

#### Intakes

January and May

#### Core modules

- Critical Thinking for Postgraduate Study
- Interactive Learning Skills and Communication
- Research Methods for Postgraduate Study

### Stage 2: Masters degree

#### Location

University of Plymouth

## DATA & COMPUTER SCIENCES

Prepare for cutting-edge postgraduate study and a range of exciting careers in the IT industry. The University's specialist laboratories are equipped with the latest software; you will learn how to master sophisticated analytic techniques and professional software.

### Leads to:

- MSc Computer Sciences (Conversion)
- MSc Data Science and Business Analytics

### Career opportunities

Graduates have gone on to work for Microsoft, IBM, the Ministry of Defence and the Met Office.

### Stage 1: Pre-Masters

#### Location

PUIC at the University of Plymouth

#### Intakes

January and May

#### Core modules

- Critical Thinking for Postgraduate Study
- Interactive Learning Skills and Communication
- Research Methods for Postgraduate Study

### Stage 2: Masters degree

#### Location

University of Plymouth



# PUBLISHING

Kick-start your career in publishing with an MA that will train you to create original publications using specialist software. Develop vital editorial and marketing skills, and network with industry professionals at London Book Fair.

---

## Leads to:

- MA Publishing

---

## Career opportunities

Graduates have gone on to work for HarperCollins, Macmillan Publishers and Literature Works.

---

## Stage 1: Pre-Masters

### Location

PUIC at the University of Plymouth

### Intakes

January and May

### Core modules

- Critical Thinking for Postgraduate Study
- Interactive Learning Skills and Communication
- Research Methods for Postgraduate Study

---

## Stage 2: Masters degree

### Location

University of Plymouth



# TOURISM & HOSPITALITY

Are you a future tourism and hospitality industry leader? Enter this fast-paced global sector with a postgraduate degree accredited by the Institute of Hospitality. Benefit from the University's strong industry partnerships and managerial focus.

---

## Leads to:

- MSc International Hospitality Management
- MSc Tourism and Hospitality Management

---

## Career opportunities

Graduates have gone on to work for Atlantis The Palm, Dubai, and Victor Manufacturing.



---

## Stage 1: Pre-Masters

### Location

PUIC at the University of Plymouth

### Intakes

January and May

### Core modules

- Critical Thinking for Postgraduate Study
- Interactive Learning Skills and Communication
- Research Methods for Postgraduate Study

---

## Stage 2: Masters degree

### Location

University of Plymouth

# PRE-SESSIONAL ENGLISH

If your overall IELTS score is lower than what we are asking for, you can join one of our on-campus pre-session English (PSE) courses, which run every semester.

PSE enables you to progress to your chosen study programme by equipping you with:

- A broad vocabulary and improved grammar and pronunciation
- Lecture note-taking and seminar participation skills
- Essay, report and assignment writing capabilities
- Reading comprehension and research skills
- Public speaking and presentation proficiency
- Independent study skills



## OUR PROGRAMMES

### Two weeks

**Who is it for?** Students who have an overall score of 5.5 but fall short by 0.5 in one band.

### One semester

**Who is it for?** Students with an overall score of 4.5, but no less than 4.5 in any band.

### Two semesters

**Who is it for?** Students with an overall score of 4.5, with no less than 4.0 in any band.

## IELTS ENTRY REQUIREMENTS

### Foundation

5.5 overall, with no less than 5.5 in each discipline.

### First year direct entry

6.0 overall, with no less than 5.5 in each discipline.

### Pre-Masters

6.0 overall, with no less than 5.5 in each discipline.

### Three-semester foundation

5.0 overall, with no less than 4.5 in each discipline.

## PSE AND YOUR VISA

Duration	Combined CAS (Y/N)	IELTS for UKVI (Y/N)
Two weeks	Y	Y
One semester	Y	Y
Two semesters	N	N

# ENTRY REQUIREMENTS

These are our minimum entry requirements. Some programmes may have higher entry points. If your country or region isn't listed, you can visit [www.puic.navitas.com/admission-requirements](http://www.puic.navitas.com/admission-requirements) for a more detailed breakdown.

## FOUNDATION AND FIRST YEAR

Country/Region	Stage 1: Foundation	Stage 2: Bachelors degree
China	Successful completion of Senior Middle School 2 with an average of 60%	Completion of Senior Middle School 3 with an average of 60%
Cyprus (South)	Apolytirion of Lykeio with an average of 12, and an average of 13 in relevant subjects for Engineering/ Sciences	Apolytirion of Lykeio with an average of 14, and an average of 15 in relevant subjects for Engineering/ Sciences
Egypt	Overall pass in Certificate of Secondary Education (Thanawiya)	Certificate of Secondary Education (Thanawiya) with a GPA of 3.0 OR 48 UCAS points at A/AS Level or equivalent
EU	European Baccalaureate (EB) with a score of 60% or above	European Baccalaureate (EB) with a score of 70% or above
Gulf Cooperation Council States (Bahrain, Kuwait, Oman, Qatar, Saudi Arabia and UAE)	Completion of General Secondary Education Certificate (Tawjahiya/Thanawiya) with an average of 60%	Completion of General Secondary Education Certificate (Tawjahiya/Thanawiya) with an average of 85% OR 48 UCAS points at A/AS Level or equivalent
Hong Kong	Successful completion of Form 5 with an average of 55% OR HKDSE with a total of 6 points	HKDSE with a total of 9 points OR 48 UCAS points at A/AS Level or equivalent
International Baccalaureate (IB)	20 points	24 points
Malaysia	SPM with 3 passes at grade D and Mathematics at grade C where required OR UEC Senior/Vocational with 4 C grades, including Mathematics where required	STPM with 2 passes at grade D, including Mathematics where required OR UEC Senior/Vocational with 2 C grades and 2 B grades, including Mathematics where required
Nigeria	WAEC/NECO with 3 passes at D7 and English Language and Mathematics at C6	WAEC/NECO with 5 passes at C6, including English Language and Mathematics
Russia	Attestat with an average of 3.0	Attestat with an average of 4.0
Spain	Graduado de Educación Secundaria Obligatoria (GESO) with a score of 5.0, including Mathematics at 6.0 where required	Título de Bachillerato with an average of 5.5, including Mathematics at 6.0 where required
United Kingdom education system	One semester: 32 UCAS points Two semesters: 5 GCSEs at A-E/9-3	48 UCAS points at A/AS Level or equivalent

## PRE-MASTERS

Country/region	Pre-Masters
All	A university-level qualification equivalent to a UK HND or Bachelors degree (Pass)

# FEES & SCHOLARSHIPS\*

## FOUNDATION

Subject area	Duration	EU†	International
Architecture & the Built Environment	Two semesters	£9,250	£12,500
Biological & Biomedical Sciences	Two semesters	£9,250	£12,500
	Three semesters	£9,250	£15,950
Business & Management	One semester	£9,250	£8,450
	Two semesters	£9,250	£12,500
Computing & Mathematical Sciences	Two semesters	£9,250	£12,500
Earth, Geography & Environment	Two semesters	£9,250	£12,500
Engineering & Robotics	Two semesters	£9,250	£12,500
	Three semesters	£9,250	£15,950
Health & Human Sciences	Three semesters	£9,250	£16,950
Law, Government & Society	One semester	£9,250	£8,450
	Two semesters	£9,250	£12,500
Marine & Ocean	Two semesters	£9,250	£12,500
Tourism & Hospitality	One semester	£9,250	£8,450
	Two semesters	£9,250	£12,500

## FIRST YEAR OF BACHELORS DEGREE

Subject area	EU	International
Business & Management	£9,250	£13,500
Tourism & Hospitality	£9,250	£13,500
First year direct entry subjects	£9,250	£13,500

## PRE-MASTERS

Subject area	Duration	EU and international
Business & Management, Data & Computer Sciences, Publishing and Tourism & Hospitality	One semester	£9,500

## UNIVERSITY OF PLYMOUTH

Subject programme	EU	International
Bachelors degree	£9,250	£13,000
Masters degree	£9,500	£14,000

For University of Plymouth fees, visit [www.plymouth.ac.uk/fees](http://www.plymouth.ac.uk/fees).

## INTAKES EXPLAINED

Study programme	Start date
One-semester foundation	September, January or May
Two-semester foundation (Business subjects only)	September, January or May
Two-semester foundation (all other subject areas)	January or May
Three-semester foundation	September
Pre-Masters	January or May





## NAVITAS FAMILY BURSARY

The Navitas Family Bursary<sup>†</sup> applies when two or more students from the same family choose to study at PUIC, and is equivalent to 10% of tuition fees.<sup>§</sup>

## PUIC SCHOLARSHIP

Scholarships of £1,500 and £3,000 are available – contact us for more information.

## NAVITAS ACADEMIC MERIT AWARD

Every semester, PUIC awards two outstanding students with £500 worth of vouchers.\*\*

\* Fees are a guide and subject to change.

† EU students are usually eligible for a loan to cover fees. If your application to the Student Loans Company is approved, you won't need to pay upfront. In fact, you don't repay a penny until you're earning over £21,000 a year!

\* The Navitas family bursary and academic merit scholarships are offered to students studying at ACBT, La Trobe University Sydney Campus, BCUIIC, Curtin College, Curtin Singapore, CRIC, EIBT, EIC, Eynesbury, FIC, HIC, ICM, ICP, ICRGU, ICWS, La Trobe Melbourne, LBIC, Deakin College, MIBT Indonesia, Navitas at FAU, Navitas at UMass Boston, Navitas at UMass Dartmouth, Navitas at UMass Lowell, Navitas at UNH, NIC, PIBT, PUIC, Griffith College, SAIBT, SIBT and UCIC only.

† Certificate programmes may also be known or registered as Foundation Studies or University Transfer Programme Stage I. Diploma programmes may also be known or registered as Undergraduate Pathway, University Transfer Programme (UTP), University Transfer Programme Stage II, University Pathways Programme, Stage 2: First Year Degree.

‡ The Navitas bursary is not applicable to any English language programme or any component of an English language programme offered by a Navitas member institution.

§ The supporting documentation that is required will depend on the country where the student is enrolled.

\*\* Navitas academic merit awards are offered to students studying in the UK at CRIC, EIC, HIC, ICP, ICRGU, ICWS, LBIC, PUIC, UNIC and BCUIIC only. This information is correct as at the time of printing and may be subject to change without notice or at the discretion of Navitas member institutions or Navitas Limited.

# USEFUL INFORMATION

## DETAILED PROGRAMME INFORMATION

[www.puic.navitas.com/courses](http://www.puic.navitas.com/courses)

## HOW TO APPLY

[www.puic.navitas.com/apply-today/how-to-apply](http://www.puic.navitas.com/apply-today/how-to-apply)

## ENTRY REQUIREMENTS

[www.puic.navitas.com/admission-requirements](http://www.puic.navitas.com/admission-requirements)

## TUITION FEES AND LIVING COSTS

[www.puic.navitas.com/apply-today/fees](http://www.puic.navitas.com/apply-today/fees)

## ACCOMMODATION

[www.puic.navitas.com/students/accommodation](http://www.puic.navitas.com/students/accommodation)

## CONDITIONS OF ENROLMENT

[www.puic.navitas.com/apply-today/conditions-of-enrolment](http://www.puic.navitas.com/apply-today/conditions-of-enrolment)

This extract is indicative and provided to applicants for information purposes only.

## ARRANGING YOUR VISA, HEALTH COVER AND ARRIVAL

[www.puic.navitas.com/microsites/predeparture](http://www.puic.navitas.com/microsites/predeparture)

## POLICIES AND PROCEDURES

[www.puic.navitas.com/privacy-policy](http://www.puic.navitas.com/privacy-policy)

There are a number of policies and procedures in place to comply with quality, regulatory and legislative requirements.

## UKCISA

[www.ukcisa.org.uk](http://www.ukcisa.org.uk)

The UK Council for International Student Affairs is the UK's national advisory body serving the interests of international students and those who work with them.

## EU STUDENT FUNDING

[www.gov.uk/government/news/funding-support-for-eu-students](http://www.gov.uk/government/news/funding-support-for-eu-students)

[www.gov.uk/student-finance-forms](http://www.gov.uk/student-finance-forms)

## UCAS TARIFF EXPLAINED

[plymouth.ac.uk/study/applicant-journey/new-ucas-tariff-explained](http://plymouth.ac.uk/study/applicant-journey/new-ucas-tariff-explained)





## Education for your world

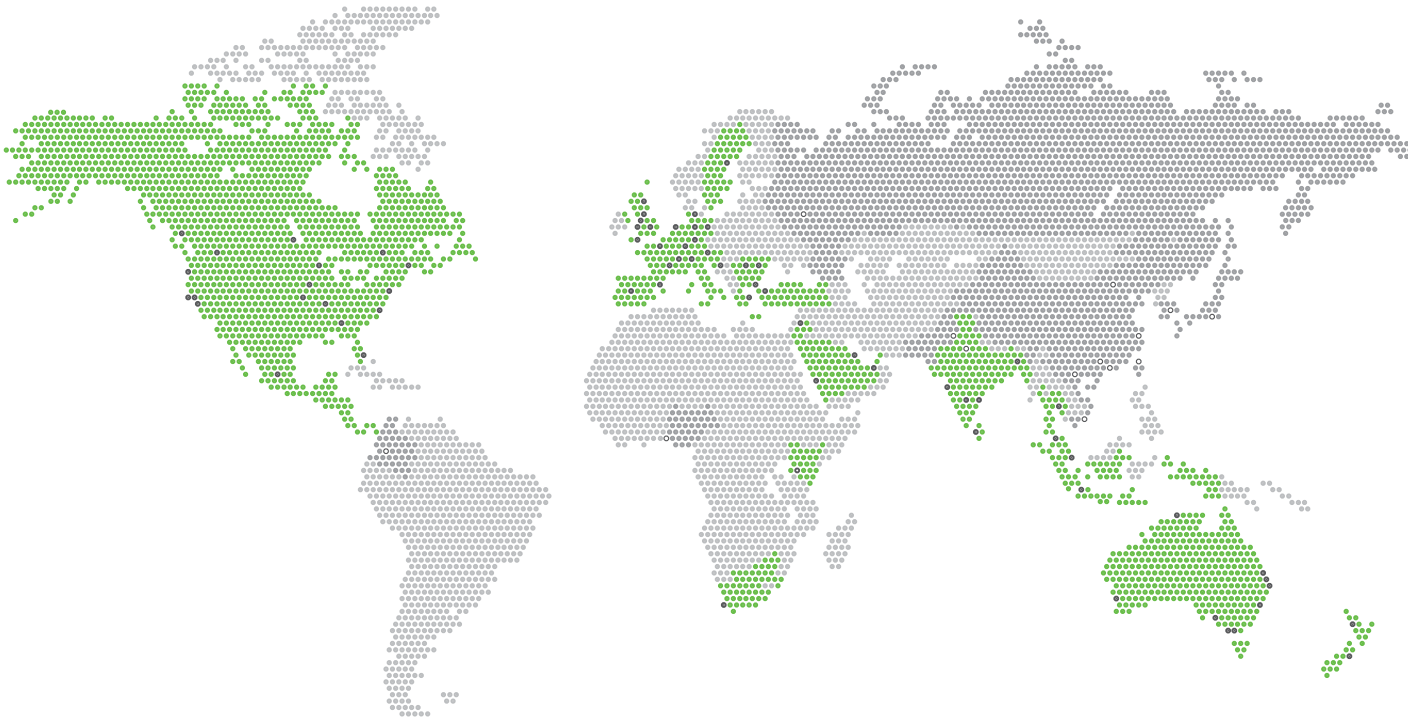
Navitas provides you with the education you need, to get where you want to be in life. From English language skills and courses to help you enter university, to training for the workplace, Navitas colleges and campuses in 28 countries will support you every step of the way.

With over 120 Navitas and SAE Institution locations across the globe, and over 80,000 students currently studying with us, we understand the world's learning needs. We've become one of the most trusted providers of education and training in the world.

Navitas offers to students, professionals and migrants from around the world, the following opportunities:

- English language training
- High school studies
- University preparation and programmes
- Post-secondary education for creative media technology
- Career advancement programmes
- Student recruitment
- Internship programmes
- Migrant settlement services

We also offer customised workplace training for companies, and a range of training and settlement services for the Australian Government. Wherever you are, and wherever you want to be, the knowledge and resources of our staff around the world will ensure your success.



### Africa

- SAE Institute, South Africa

### Asia

- ACBT – Edith Cowan University, Sri Lanka
- Curtin Singapore (The Singapore Campus of Curtin University)
- SAE Institutions – Indonesia, Malaysia, Thailand

### Australia

- ACAP (Australian College of Applied Psychology)
- ATTC (Australian TESOL Training Centre)
- CELUSA (Centre for English Language in the University of South Australia)
- Curtin College – Curtin University, Perth
- Curtin University Sydney
- Deakin College – Deakin University, Melbourne
- ECC – Edith Cowan University, Perth
- Eynesbury – The University of Adelaide and University of South Australia
- Griffith College – Griffith University, Brisbane, Gold Coast
- Hawthorn-Melbourne
- La Trobe Melbourne – La Trobe University
- La Trobe University Sydney Campus
- Navitas English
- Navitas Health Skills Australia (HSA)
- Navitas College of Public Safety (NCPS)
- Navitas Professional
- NIC – The University of Newcastle
- SAE Institutions – Adelaide, Brisbane, Byron Bay, Melbourne, Perth, Sydney
- SAIBT – University of South Australia, Adelaide
- SIBT, Sydney
- Western Sydney University Sydney City Campus
- Western Sydney University The College
- UC College - University of Canberra

### Canada

- FIC – Simon Fraser University, Vancouver
- ICM – the University of Manitoba, Winnipeg

### Central America

- SAE Institute, Mexico

### Europe

- SAE Institutions – Austria, Belgium, France, Germany, Greece, Italy, Netherlands, Romania, Serbia, Slovenia, Spain, Sweden, Switzerland, Turkey

### Middle East

- SAE Institutions – Jordan, Saudi Arabia, UAE

### New Zealand

- SAE Institute, Auckland
- UCIC – University of Canterbury, Christchurch

### United Kingdom

- BCUIC – Birmingham City University
- CRIC – Anglia Ruskin University, Cambridge
- EIC – Edinburgh Napier University
- HIC – University of Hertfordshire, Hatfield
- ICP – University of Portsmouth
- ICRGU – Robert Gordon University, Aberdeen
- ICWS – Swansea University
- LBIC – Brunel University London
- PUIC – University of Plymouth
- SAE Institutions – Glasgow, Liverpool, London, Oxford
- UNIC - The University of Northampton

### United States of America

- Florida Atlantic University Global Student Success Programme
- Richard Bland College of William & Mary Global Student Success Programme
- SAE Institutions – Atlanta, Chicago, Los Angeles, Miami, Nashville, New York, San Francisco
- University of Idaho Global Student Success Programme
- University of Massachusetts Boston International Student Success Programme
- University of Massachusetts Dartmouth Global Student Programme
- University of Massachusetts Lowell Global Student Success Programme
- University of New Hampshire Global Student Success Programme

# STUDY WITH PLYMOUTH UNIVERSITY

## Plymouth University International College (PUIC)

University of Plymouth  
15 Portland Villas  
Drake Circus  
Plymouth  
Devon PL4 8AA  
United Kingdom

T: +44 (0) 1752 411 114  
F: +44 (0) 1752 411 115  
E: [info@puic.plymouth.ac.uk](mailto:info@puic.plymouth.ac.uk)



puicstudents



puicuk



@puic\_students



@puicnews

Plymouth Devon International  
College Ltd trading as Plymouth  
University International College  
(PUIC) Company Number: 06822402  
Registered in England and Wales.

The information contained in this guide  
is correct at the time of publication,  
however, Plymouth University  
International College (PUIC) reserves  
the right to alter, amend or delete  
details at any time without notice.

This guide is provided free of charge.

Printed December 2017.  
PUIC170816-1207\_1217\_AW



PUIC is part of the Navitas Group.



[www.plymouth.ac.uk/puic](http://www.plymouth.ac.uk/puic)  
[www.puic.navitas.com](http://www.puic.navitas.com)

