



ENGLISH FOR LIFE

www.elsis.edu.au

SYDNEY | BRISBANE | MELBOURNE



ENGLISH LANGUAGE
SCHOOLS

CONTENTS

WHY STUDY AT ELSIS?	4
STUDENT TESTIMONIALS	5
INFORMATION ABOUT BRISBANE CAMPUS	8
INFORMATION ABOUT SYDNEY CAMPUS	10
INFORMATION ABOUT MELBOURNE CAMPUS	12
COURSE PROGRESSION	14
TIMETABLES	15
GENERAL INTENSIVE ENGLISH	16
PRONUNCIATION FOR EFFECTIVE COMMUNICATION	17
IELTS	18
EAP	20
CAMBRIDGE EXAM PREPARATION	22
PATHWAYS FROM ELSIS	24
EL SIS PLUS WORKSHOPS	26
SOCIAL ACTIVITIES	28
2STAY ACCOMMODATION	30
EL SIS TEAM	31

WELCOME TO ELSIS



“On behalf of the ELSIS team, I would like to welcome you to our wonderful school. Our mission is to help you improve your English and achieve your English language goals in a positive and nurturing environment. Our teachers are experienced and friendly, and our student services staff are helpful and ready to assist you in the best way possible.

Whether your goal is to improve your general grasp of English, to study an exam preparation course or to study an academic pathway course, ELSIS is the right place for you. Our courses are designed to meet your expectations and needs.

I look forward to meeting you and welcoming you to our ELSIS family.”

Rima Ibrahim

Director of Studies

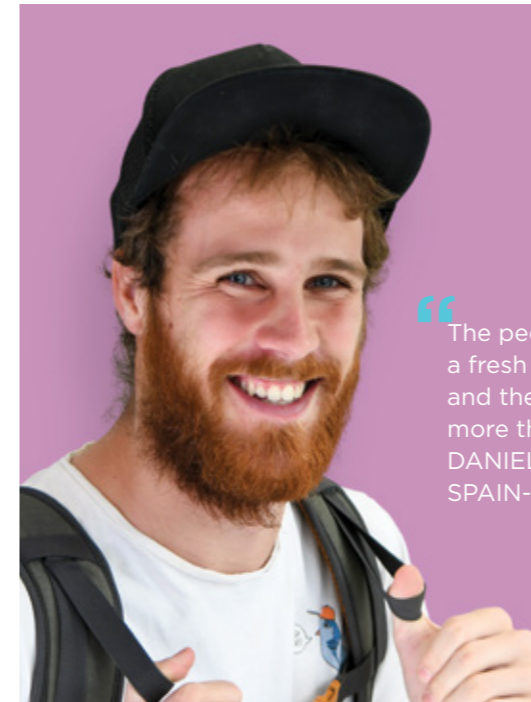
WHY STUDY AT ELSIS?

- Timetable flexibility! You can choose to study in the morning, afternoon or evening
- We help you design the study plan that suits your goals before arriving in Australia
- If your study plan changes upon arrival, we are ready to help you with a new study plan
- Direct entry to Victoria University, Swinburne University and Asian Pacific College when you successfully complete our EAP course
- Pathways to a range of universities and colleges in Australia
- You can transfer from one city to another with NO extra charges
- ELSIS Plus Workshops available daily and designed to help you meet your goals

“ I really love the workshops. ELSIS provides a different range of workshops every afternoon, which is helpful for me, because if I need more help or if I want to improve my pronunciation I can attend.
EDERSON JOELSON
BRAZIL - SYDNEY ”



STUDENT TESTIMONIALS



“ The people, everybody has a fresh vitality, always happy and the classes are fun. It's more than English, it's living it.
DANIEL CIERO SIRVIENTE
SPAIN- MELBOURNE ”



“ I decided to study in ELSIS because I was impressed with teachers and classmates when I took a trial lesson. Also ELSIS staff are very good !!
NATSUMI KANO
JAPAN - SYDNEY ”



“ Since I have been in ELSIS I have only had a great experience, because the staff are very friendly, helpful and highly focused on teaching.
MIHELCA GUSTIN
SLOVENIA - SYDNEY ”



“ it is a great opportunity to improve my English skills. I like ELSIS because I'm not just studying, we are also learning English through activities and social activities. I'm having so much fun and a really good experience.
PARIN
THANAVATANACHAVOEN
(BLESS)
THAILAND - MELBOURNE ”



“ The most important characteristic that I decided to study at ELSIS is because it is in the city, and has different alternatives of English courses.
ANDREA ZARATE
ECUADOR - BRISBANE ”



**BRISBANE
SYDNEY
MELBOURNE**

ELSIS campuses are located in the centre of three major Australian cities, Sydney, Melbourne and Brisbane in close proximity to public transport, food courts and entertainment facilities. If travel is your passion, we offer you the flexibility to transfer between campuses for a better Australian experience.

Information about **BRISBANE CAMPUS**

Brisbane Campus

With a central city location, our Brisbane campus is in short walking distance to the famous Botanical gardens and South Bank where you can enjoy the amazing parklands, river views, exquisite restaurants and entertaining facilities. Our campus is easily accessible and close to public transport as well as the city's major shopping district.



Why Choose Brisbane?

- Brisbane is famous for its warm weather all year round
- Brisbane city has amazing parks which are ideal for picnics.
- Enjoy the drive to the famous Surfers Paradise
- Enjoy the amazing costal Scenic drives with stunning forest and beach views
- Brisbane is the home of amazing events including the spectacular Riverfire, the famous EKKa and for sports lovers, the State of Origin.



Information about **SYDNEY CAMPUS**

Sydney Campus

Our Sydney Campus is located in the heart of the city in close proximity to public transport, Darling Harbour, World Square and Hype Park. With easy access to public transport, students can take a bus to major Australian beaches and Parks.

Our campus offers modern educational facilities designed to meet the needs and requirements of our students including advanced computer labs, comfortable breakout areas and modern kitchen facilities with lots of space to socialise.

Why Choose Sydney?

- Sydney is one of the world's most cosmopolitan cities
- With an extensive variety of restaurants, cafes and cultural attractions, Sydney has something for everyone.
- Sydney's natural environment consists of a unique range of native plants and animals
- Sydney is an exciting, safe and clean place to live in.
- Sydney offers a range of services available for international students
- Sydney is famous for its beautiful beaches and parks, which provide the perfect setting for outdoor activities.



Information about MELBOURNE CAMPUS

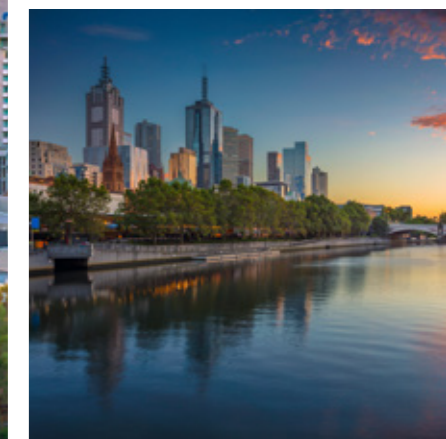
Melbourne Campus

Our Melbourne campus is located on a buzzing street surrounded by funky cafes and restaurants. Our Campus is modern, featuring a comfortable student lounge area, classes with city views and a cozzie kitchen with modern facilities.



Why Choose Melbourne?

- Melbourne has been voted as the world's most liveable city
- Melbourne is packed with culture, fun, music, sports and comedy
- Melbourne is the Food Capital of Australia offering a range of cuisines from many of our 200 nationalities.
- Enjoy free public transport throughout the city centre
- For the sport lovers, Melbourne provides access to international sporting events like the F1 Grand Prix, Australian Tennis and International rugby
- Our greater regional Victoria provides diverse landscapes including snow-capped mountains, amazing oceans, striking desert regions, and charming historic towns.



COURSE PROGRESSION



TIMETABLES

While we try to give you your preference, there is no guarantee of you getting your choice of time.

Times may be changed at our discretion

MORNING	
Times	Monday to Friday
8:15 to 10:15	Lesson 1
10:15 to 10:30	Break
10:30 to 12:30	Lesson 2

AFTERNOON	
Times	Monday to Friday
12:40 to 2:40	Lesson 1
2:40 to 3:00	Break
3:00 to 5:00	Lesson 2

EVENING	
Times	Monday to Friday
5:10 to 7:10	Lesson 1
7:10 to 7:30	Break
7:30 to 9:30	Lesson 2



“ ELSIS staff are excellent as they not only help us in improving our English level, but they also help us in preparing for University and the corporate environment. ”

SAURABH CHAUHAN
INDIA - SYDNEY

GENERAL INTENSIVE ENGLISH

Cricos Course Code: 054514E

Key Facts

Course duration	2 - 84 weeks
Levels (6)	Beginner, Elementary, Pre-intermediate, Intermediate, Upper-intermediate, Advanced
Class size	Average 15 / Maximum 18
Minimum age	18
Entry requirement	None
Enrolment	Any Monday

Our General Intensive English course is recommended as the first step in language learning. For those just starting out with English, General Intensive English gives you a solid grounding in grammar and social and functional communication.

General Intensive English allows you to improve your communication skills for everyday situations. You learn new vocabulary, idioms and Australian culture. All of this takes place in a fun learning environment.

Why Study the General Intensive English Course with ELSIS?

- Study English in a fun and relaxed environment
- Meet people from all over the world
- Weekly check tests and fortnightly one on one feedback sessions with your teacher
- Access to a range of workshops designed to help you improve quickly and enrich your experience
- Access to a range of extra-curriculum activities and excursions
- Flexible timetable options (Morning, Afternoon and Evening classes)

MONDAY	TUESDAY	WEDNESDAY	THURSDAY	FRIDAY
Vocabulary Introduction to the week's topic	Reading and Discussion	Speaking practise	Writing Skills Sentence Structure	Video & Discussion
Reading and Discussion	Vocabulary and word building	Reading and Critical Thinking	Word order in a sentence	
Speaking and Pronunciation	English Grammar Theory & Practise	Vocabulary & Pronunciation	English Grammar Theory & Practise	Weekly check and one on one Feedback
Real Life Practise the vocabulary in real life situations	Listening Practise	Role play	Listening Practise	

Sample timetable

PRONUNCIATION FOR EFFECTIVE COMMUNICATION

Cricos Course Code: 062241C

Key Facts

Course duration	6 weeks
Levels	Intermediate to Upper-intermediate
Class size	Average 15 / Maximum 18
Minimum age	18
Entry requirement	Pre-entrance test or intermediate level at ELSIS
Enrolment	Every 6 weeks

Pronunciation for Effective Communication:

- This six weeks course is designed to improve students' English pronunciation and help them improve their speaking and listening skills.
- The purpose of this course is to familiarise students with features of English pronunciation. Students will learn how to produce English sounds accurately.

Students need to be at an intermediate level or above to participate in this course.

Learning Outcomes

Students who undertake this course will:

- Feel more confident in using spoken English
- Produce natural English rhythm and intonation
- Feel more confident when communicating with native and non-native speakers of English.
- Develop their listening skills

MONDAY	TUESDAY	WEDNESDAY	THURSDAY	FRIDAY
Mouth diagram Introduction to the sounds (materials: paddle pop sticks)	Vowels /æ/ (man)/	Consonants /l/ (letter)	Consonants	Voice Diary Students review the vocabulary and establish their own dictionary
	Practise using the Vowels	Practise using the consonants	Practise using the consonants	
Listening for Intonation	Intonation Question Forms	Role Play Focus on intonation and accurate pronunciation	Presentation My Journey Story	Feedback
Practise Intonation	Practise Question forms			

Sample timetable

IELTS

Cricos Course Code: 062241C

Key Facts

Course duration	2 - 24 weeks
Levels	Intermediate to Upper-intermediate
Class size	Average 15 / Maximum 18
Minimum age	18
Entry requirement	Pre-entrance test or Intermediate level at ELSIS
Enrolment	Any Monday

Preparation Course for The International English Language Testing System

This is an Examination Preparation course which equips students to take the internationally recognised International English Language Testing System (IELTS) examination. The course includes authentic IELTS-style examinations which students take every 3 weeks.

The IELTS Certificate is recognised as a means of entry to vocational and university courses or to apply for visas and for immigration purposes.

- The ELSIS IELTS Preparation course includes General and Academic IELTS and students have the option of studying in the morning or in the evening (if available).

- The course runs over a period of 12 weeks, and has a weekly intake allowing students to enter the class at any time.
- This course is also a great challenge for students wishing for a more intensive course of study.
- Students need to be level 4 (Intermediate Level) or above to participate in the IELTS class.

Skills Include

- Writing, reading, listening, note taking and speaking
- Study skills
- IELTS exam preparation and practice test.

Learning Outcomes

Students who undertake the full course will gain:

- An understanding of the exam's structure
- Strategies for the exam: timing, organisation, etc
- Competency in the four exam skills
- A better understanding of grammar, vocabulary, functions, register and discourse
- The main vocabulary used in the exam's themes
- Development of speaking fluency and accuracy
- Students are assessed at regular intervals and are well-prepared for the demands of academic studies.



MONDAY	TUESDAY	WEDNESDAY	THURSDAY	FRIDAY
Vocabulary Commenting on graphs	IELTS Reading Strategies Skimming and Scanning	Describing Process from Pictures	IELTS Academic Practise Test (Reading, Writing and Listening)	Speaking Test Practise
Writing- Task 1 Describing Bar Charts	IELTS Reading Practise	IELTS Writing Theory Process structure		
Listening Describing bar charts and line graphs	Listening For specific information	IELTS Writing Practise Writing a process	IELTS Academic Practise Test (Reading, Writing and Listening)	Test Feedback
Speaking Comparing bars and graphs	Grammar for IELTS			

Sample timetable

EAP

Cricos Course Code: 058166K

Key Facts

Course duration	12 - 24 weeks per level
Levels (2)	EAP1 - Upper-intermediate EAP2 - Advanced
Class size	Average 15 / Maximum 18
Minimum age	18
Entry requirement	Pre-entrance test or Upper-intermediate level at ELSIS
Enrolment	Fixed start dates

English for Academic Purposes

EAP is a preparation course designed for students who wish to study at one of the universities and colleges affiliated with the school.

This course provides students with the necessary skills required to adapt and cope with vocational and university requirements by exposing them to real academic life in Australia. During this course students will practise lecture note-taking skills, referencing, summarising and paraphrasing, giving presentations, Academic research and integrity, essay and report writing as well as discussions and debating.

Learning Outcomes

- Critically evaluate and analyse a variety of complex academic texts
- Understand and evaluate written and spoken text
- Produce academic essays and reports based on research
- understand and apply academic referencing conventions
- Understand lectures and listening activities at a university level
- Prepare and deliver oral presentations as required at a university level

Pathways

Pathways available to VU Sydney, Swinburne University of Technology Sydney and APIC. Please see page 24 and 25 for more information.



MONDAY	TUESDAY	WEDNESDAY	THURSDAY	FRIDAY
CI - Course Introduction Lesson objective: An introduction to the EAP 2 course	AR - Academic Reading Lesson objective: Applying reading strategies to academic text	RS - Research skills Lesson objective: Understanding research	AWT - Academic Writing Theory Lesson objective: Brainstorming and creating mind maps	AWW - Academic Writing Workshop Lesson objective: Writing a paragraph
SP - Speaking and Presentations Lesson objective: Practicing a short presentation	AL - Academic Listening Lesson objective: Applying note-taking skills	SP - Speaking and Presentations Lesson objective: Participating in academic discussions	AWE - Academic Writing exercise Lesson objective: Understanding paragraph structure and unity	CF - Consultation and Feedback Lesson objective: Provide feedback on AEW writing exercise

Sample timetable



CAMBRIDGE EXAM PREPARATION

Cricos Course Code: 096284M

Key Facts

Course duration	10 - 12 weeks
Levels (3)	B1 (PET) B2 (FCE) C1 (CAE)
Class size	Average 12 / Maximum 18
Minimum age	18
Entry requirement	Pre-entrance test or Intermediate (level 4) at ELSIS
Enrolment	Fixed start dates (January, March, June and September)



Learning Outcomes

Students who undertake the full-length 10-12 weeks of the course will gain:

- Knowledge of test-taking techniques specific to B1 (PET), B2 (FCE), and C1 (CAE).
- Knowledge of text types, e.g. formal and informal letters, narratives, reports and articles.
- Improved listening skills.
- Improved reading skills for a variety of genres.
- Improved speaking skills.
- A greater awareness of word families and word formation.
- The ability to analyse texts grammatically and to transform sentences so as to express the same meaning in different form.
- Development of speaking fluency and accuracy
- Students are assessed at regular intervals and are well prepared for the demands of the Cambridge exam

Cambridge exams

- The exams are internationally recognised and useful for students who need to use English in their workplace.
- The exams consist of five papers: Reading, Writing, Speaking, Listening and Use of English. The course develops and improves skills in all five areas.
- Opens new opportunities + study pathways to Colleges and Universities around the world as well as for visa applications and for immigration purposes.
- Certificates are valid for life.



MONDAY	TUESDAY	WEDNESDAY	THURSDAY	FRIDAY
Reading Test Tips Reading test techniques	Cambridge Listening tips How to listen for the right information	Speaking Test Tips Giving enough information	Cambridge Listening Infer context from listening texts	Reading Practise
Reading Practice	Cambridge Listening practise	Speaking practise	Cambridge Speaking	Vocabulary in context
Use of English Using the right word to complete sentences	Cambridge Writing Tips How to write a formal letter	Vocabulary for Cambridge Phrasal verbs and collocations	Use of English Word formation	Cambridge Writing practise
Speaking Test Tips and Practise How to avoid stress before and during the speaking test	Cambridge Writing Practise In class writing	Cambridge Reading Practise Understanding vocabulary in content	Grammar Forming nouns and adjectives	Feedback

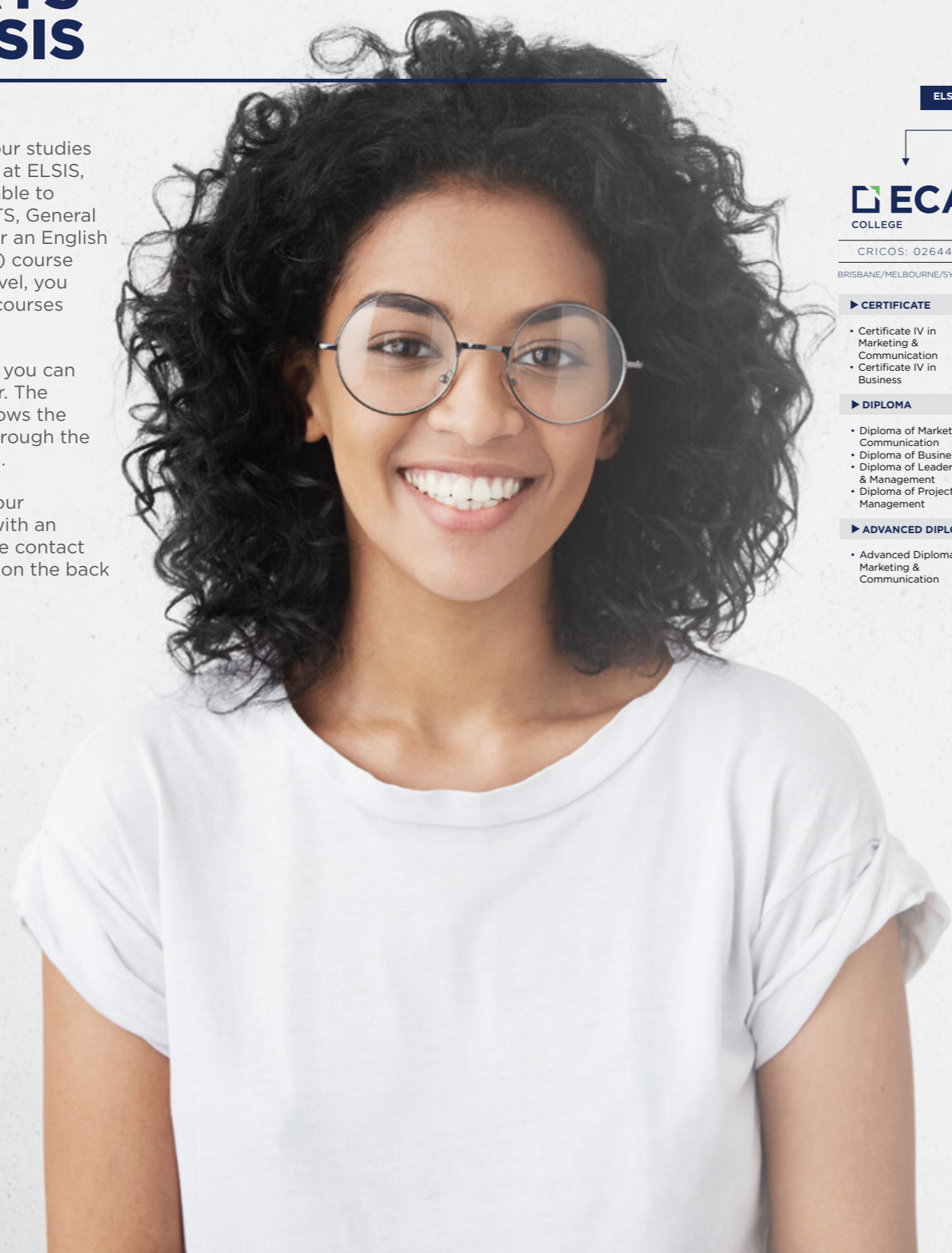
Sample timetable

PATHWAYS FROM ELSIS

If you would like to further your studies after completing your course at ELSIS, there are many options available to you. After completing an IELTS, General English Upper Intermediate or an English for Academic Purposes (EAP) course and achieving the required level, you may be eligible to study the courses outlined below.

Once you have achieved this, you can take your studies even further. The diagram on the next page shows the various pathways available through the Education Centre of Australia.

If you would like to discuss your study plans in further detail with an educational consultant, please contact us using the details provided on the back cover of this brochure.



EL SIS - General English, IELTS Exam Preparation, Cambridge Exam Preparation, English for Academic Purposes (EAP)



IMPORTANT INFORMATION

- PATHWAY TO UNDERGRADUATE PROGRAMS
- PATHWAY TO POSTGRADUATE PROGRAMS
- VET: CERTIFICATED / DIPLOMA / ADVANCE DIPLOMA/ GRADUATE DIPLOMA
- HIGH EDUCATION: GRADUATE DIPLOMA / UNDERGRADUATE / POSTGRADUATE

Other articulation Pathways:



EL SIS PLUS WORKSHOPS



Every week you will have the opportunity to participate in a range of free workshops designed to help you increase your language proficiency and help you adapt to life in Australia.

All workshops run in the afternoon and are free for students.

Workshops are subject to change depending on student request. These are some of the workshops available at ELSIS:



HOSPITALITY

Learn tray service, wine service, plate carrying, function workflow, table setting, taking orders, hospitality vocabulary and a lot more.



COVER LETTERS AND RESUMES

This workshop is for students who want to learn how to write a cover letter and a resume which meet Australian employment standards. Students will also learn the skill necessary to find employment in Australia.

IELTS IELTS PRACTICE TEST

A great opportunity to practice IELTS Listening and Reading under examination conditions. Excellent preparation for students who intend to take the IELTS test.



PRONUNCIATION

Learn to reduce your accent using Australian intonation, stress patterns and rhythm to speak clearly and confidently while also improving your Listening skills.



COFFEE CONVERSATION

A great chance to have a coffee while speaking English. This can be at school or outside in a café. It is a chance to make friends and learn how to speak appropriately in different situations.



ONE-ON-ONE

Personalised (20 minutes) individual tutorial sessions with teachers, to work on any academic area. Students often refresh grammar points or practice vocabulary. It is up to you.



JOB SEARCH

Upon completion of the cover letters and resumes workshop students are advised to attend the job search workshop. This workshop focuses on introducing students to job search websites, teaching them how to select jobs relevant to their experience and guiding them through the job application process



GRAMMAR PRACTICE

This workshop is for students who want to improve their English grammar. Each session focuses on a grammar concept. Students practise using the grammar in real life situations.



TED TALKS AND DISCUSSIONS

Listen to an interesting TED presentation and discuss with a group.

SOCIAL ACTIVITIES

Wilsons Promontory
VIC



ELSIS offers a range of exciting and educational activities on a regular basis. We believe that this is important for learning English effectively, so that students may become part of a wider social network in their new life in Australia.

Extended school trips include weekend camping trips to picturesque beach destinations such as Ulladulla, which is just a few hours out of Sydney.

Shark Island
NSW



Surf Camp
NSW



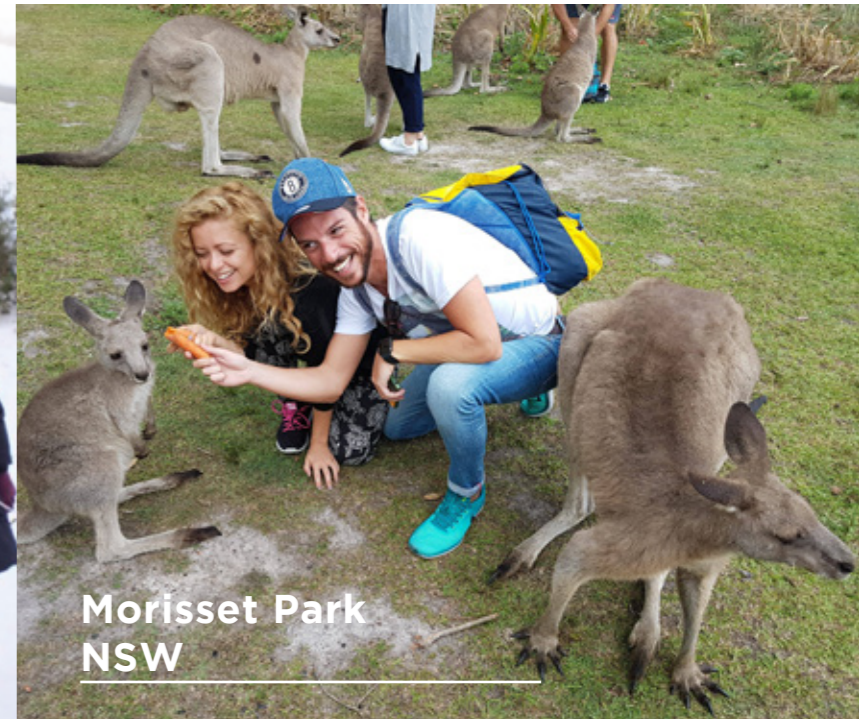
Southbank
QLD



Mt Buller
VIC



Morisset Park
NSW



ACCOMMODATION

Sydney, Melbourne and Brisbane

We aim to ensure a comfortable stay for students in Sydney, Melbourne and Brisbane.

Our accommodation is divided into Residence and Homestay. Apart from our accommodation options, we also offer an airport pick-up service, collecting you from Sydney, Melbourne or Brisbane Airport and transporting you directly to your accommodation destination. We can also arrange transfer back to the airport at the end of your stay. For your peace of mind, all our drivers carry identification. All bookings can be made by agencies through our online booking system. You will receive all the information necessary for airport pick-up, if required, and a complete profile with rules, photos, location and transport details for both residence and homestay accommodation.



SHARE HOUSE HOMESTAY AIRPORT PICK UP

For more information please visit:

WWW.2STAY.COM.AU

STUDENT SERVICES

You will meet our friendly Student Services team on your very first day. They can help you with any questions you may have about Australia and your English language courses.

Our Student Services officers will guide you in the right direction. On your first day they will take your photograph for your ELSIS Student Card and introduce you to the college environment. If you have questions related to opening a bank account, arranging a tax file number or obtaining a mobile phone/sim card, then they are the people who can help you.

Very soon ELSIS will feel like your second home because of its warm and welcoming atmosphere.

STUDENT ENGAGEMENT

Each campus has a Student Engagement Officer who will help you settle in. They look after all Social aspects during your time at ELSIS. So fun and socialising is guaranteed.

THE ELSIS TEACHING TEAM

Our teachers are university educated and hold specialist qualifications in English language teaching. Ongoing professional development ensures our teachers are always up-to-date with the latest teaching methodologies.

In addition to the Director and Associate Director of Studies, there are level coordinators available to help you and answer your questions.



Version 20.1

Brisbane Campus

Level 1, 126 Margaret St, Brisbane, QLD 4000
Ph: + (61 7) 3210 7474 | info@elsis.edu.au

Melbourne Campus

Level 7, 399 Lonsdale St, Melbourne, VIC 3000
Ph: + (61 3) 9603 5333 | info@elsis.edu.au

Sydney Campus

Level 2, 545 Kent St, Sydney, NSW 2000
Ph: + (61 2) 8766 3500 | info@elsis.edu.au

