



International Course Guide

2020

Welcome

from the Vice-Chancellor



Welcome to Federation University Australia

Congratulations on joining Federation University Australia.

We are a modern, progressive university providing high-quality education across a network of international and Australian campuses. Our University has a distinguished history dating back to 1870, making it the third-oldest higher education provider in Australia.

Studying with our university, you are joining a diverse community of 25,000 students from across Australia and the world. Our campuses are closely connected to local communities. We are delighted to partner with Melbourne Institute of Technology to help you gain an internationally recognised qualification.

At Federation University our purpose is to transform lives. Our wish is that successful completion of one of our high-quality programs will help you to transform your life through education.

This is reflected in our rankings. The Good Universities Guide ranks us as number one in Australia for first-generation student enrolments, and the number one university in Victoria in seven categories including starting salary for graduates, full-time employment, social equity, student-teacher ratio, skills development, student support and teaching quality.

The research conducted at Federation University is world-class. Under the Excellence in Research Australia rankings, we have achieved the highest possible five-out-of-five rating in seven research areas, with a further 11 areas ranked above or at world standard. Please enjoy your time studying with us, as you get to know your lecturers, school and support staff and forge new friendships that will remain with you for life.

I wish you all the very best for your studies and look forward to your participation in the life of Federation University.

Professor Helen Bartlett

Vice-Chancellor and President, Federation University Australia



Welcome from the Vice-Chancellor	2
Why Choose Federation University at MIT?	4
Career Development	5
International Scholarships	6
Course Summary	7
Living in Australia	8
Living in Melbourne	10
MIT Melbourne Campus	11
Living in Sydney	12
MIT Sydney Campus	13
Teaching & Learning	14
Centre of Learning	15
Student Wellbeing and Support	16
Federation Business School	
Bachelor of Commerce (Accounting)	18
Bachelor of Business (Management)	19
Graduate Diploma of Management	20
Graduate Diploma of Professional Accounting	21
Master of Professional Accounting	22
Master of Business Administration	23
School of Engineering and IT	
Bachelor of Information Technology	25
Bachelor of Information Technology (Business Information Systems)	26
Graduate Diploma of Technology (Enterprise Systems and Business Analytics)	27
Graduate Diploma of Technology (Software Engineering)	28
Master of Technology (Enterprise Systems and Business Analytics)	29
Master of Technology (Software Engineering)	30
Entry Requirements	31
English Language Requirements	32
Your Next Steps	33
Important Information	34
Application form	35
Key Dates 2020 & 2021	39



Why Choose Federation University at MIT?

Federation University is the third oldest site of Higher Learning in Australia with more than 15,000 international and domestic students. We offer the best of both worlds: combining a strong tradition of more than 145 years of tertiary education with the freedom and dynamism that comes with being a multisector University with close links to local industry and technology.

MIT Campuses are in the Central Business Districts of Melbourne and Sydney where our students can enjoy convenient eating places, excellent shopping centres and access a variety of public transport.



Internationally recognised qualifications A Federation University qualification is internationally recognised. Our graduates are employed all over the world including Australia, Japan, Singapore, UK, UAE, Russia, USA and Canada.

Excellent Facilities MIT's city-centre campuses have everything you need to excel in your studies. Hightech computer labs, fast wireless internet, libraries, plus plenty of study spaces and places to chill out.

Career development We are committed to helping you make a successful transition from study to employment. Our career development services include career counselling, job search assistance, resume and interview skills training as well as workshops and seminars throughout the academic year to help develop your professional skills.

City Vibe Study in the heart of Australia's most vibrant student cities, Melbourne and Sydney. Step outside your lectures to discover world-class arts, music, food, shopping and sports right in the city centre.

Industry relevant programs Our courses are flexible, innovative and industry relevant. The programs are regularly updated to suit changes in the international environment. The University's close links with industry plays an important role in the design of programs which greatly benefit the new graduate.

A Home Away From Home Studying at university in a foreign land can feel a little strange at first, but from the moment you arrive, we'll do everything to make you feel at home.

Career Development

Employability is at the heart of courses and student life at Federation University at MIT.

We are currently the only Federation University partner provider that provides our students with access to CareerHub. Our graduates also have access to Career Services for 12 months after graduation.

Our Career Services are designed to help you unlock a world of opportunities and resources with organisations in the public, private and not-for-profit sectors in Australia and globally. Build a rich portfolio of skills and experiences to enhance your CV and impress employers from the very first click. Most importantly, we will equip you with the critical skills in life-long learning, resilience and adaptability to ensure you'll thrive in your future career.

JUST SOME OF THE WAYS WE CAN HELP

WEEKLY INTERACTIVE WORKSHOPS

Explore your career direction and learn the skills to achieve your career goals. We offer workshops on career topics like job applications, CV writing, job interviews, industry job markets, and more.

ONE-TO-ONE ADVICE

Get personalised advice from our highly experienced career advisors. Our Career Services advisors are career coaches and recruitment consultants with broad industry experience, so they can provide relevant, up-to-date and practical advice on what employers are looking for.

CAREERHUB

Get a headstart on your future with our online CareerHub:

- Search local, national and global job opportunities, including graduate positions and flexible part-time employment, direct from employers
- Get insider tips on how to succeed in the Australian job market
- Stay up-to-date on careers events and workshops held on campus
- Book an online or face-to-face appointment with our career advisors

BE INSPIRED: Hear from industry leaders at our regular seminars and conferences. Our regular events will keep you informed on your industry, so you're ready to take advantage of new opportunities. Connect with industry leaders and employers at our 'Future of Work' conference and our dedicated 2-day career event held every trimester. Conference highlights include intensive workshops, skills sessions and networking opportunities to enhance your career prospects.

CONNECT WITH INDUSTRY

Boost your employability with our industry connections.

AFTER YOU GRADUATE

Career services (excluding CareerHub) are available to students for 12 months after graduation.

International Scholarships

2020 TUITION FEE SCHOLARSHIP

All students commencing a Business or Information Technology degree by coursework will automatically receive 16% of tuition fees covered by scholarship.



Course Summary

English Language Pathways	CRICOS	Campus	Duration	Intake	Tuition Fees	IELTS	Page
General English - Beginner to Advanced	071156C	Melbourne & Sydney	1 to 55 weeks	Varies*	AUD\$ 360.50 per week	~	32
English for Academic Purposes (EAP) - Upper Intermediate to Advanced	049000G	Melbourne & Sydney	1 to 20 weeks	Varies*	AUD\$ 360.50 per week	~	32

Disclaimer: The English Language Courses above are MIT courses, and not affiliated to Federation University.

Program	CRICOS	Duration	Intake	Campus	IELTS	Trimester Fees	Annual Fees	Page
Federation Business School								
Bachelor of Commerce (Accounting)*	044114D	Full-time 3 Years 6 Trimesters	March, July & November	Melbourne, Sydney	IELTS 6.0 (Academic), with no band less than 6.0 or equivalent.	AUD\$ 12,750	AUD\$ 25,500	18
Bachelor of Business (Management)*	088132E	Full-time 3 Years 6 Trimesters	March, July & November	Melbourne, Sydney	IELTS 6.0 (Academic), with no band less than 6.0 or equivalent.	AUD\$ 12,750	AUD\$ 25,500	19
Graduate Diploma of Management	085208C	Full-time 1.5 Years 3 Trimesters	March, July & November	Melbourne, Sydney	IELTS 6.0 (Academic), with no band less than 6.0 or equivalent.	AUD\$ 14,200	AUD\$ 28,400	20
Graduate Diploma of Professional Accounting	085209B	Full-time 1.5 Years 3 Trimesters	March, July & November	Melbourne, Sydney	IELTS 6.0 (Academic), with no band less than 6.0 or equivalent.	AUD\$ 14,200	AUD\$ 28,400	21
Master of Professional Accounting	085211G	Full-time 2 Years 4 Trimesters	March, July & November	Melbourne, Sydney	IELTS 6.0 (Academic), with no band less than 6.0 or equivalent.	AUD\$ 14,200	AUD\$ 28,400	22
Master of Business Administration	085210J	Full-time 2 Years 4 Trimesters	March, July & November	Melbourne, Sydney	IELTS 6.0 (Academic), with no band less than 6.0 or equivalent.	AUD\$ 14,200	AUD\$ 28,400	23
School of IT & Engineering								
Bachelor of Information Technology*	074009A	Full-time 3 Years 6 Trimesters	March, July & November	Melbourne, Sydney	IELTS 6.0 (Academic), with no band less than 5.5 or equivalent.	AUD\$ 12,150	AUD\$ 24,300	25
Bachelor of Information Technology (Business Information Systems)*	092106F	Full-time 3 Years 6 Trimesters	March, July & November	Melbourne, Sydney	IELTS 6.0 (Academic), with no band less than 5.5 or equivalent.	AUD\$ 12,150	AUD\$ 24,300	26
Graduate Diploma of Technology (Enterprise Systems and Business Analytics)	095031G	Full-time 1.5 Years 3 Trimesters	March, July & November	Melbourne, Sydney	IELTS 6.0 (Academic), with no band less than 6.0 or equivalent.	AUD\$ 13,050	AUD\$ 26,100	27
Graduate Diploma of Technology (Software Engineering)	080506M	Full-time 1.5 Years 3 Trimesters	March, July & November	Melbourne, Sydney	IELTS 6.0 (Academic), with no band less than 6.0 or equivalent.	AUD\$ 13,050	AUD\$ 26,100	28
Master of Technology (Enterprise Systems and Business Analytics)*	095030G	Full-time 2 Years 4 Trimesters	March, July & November	Melbourne, Sydney	IELTS 6.0 (Academic), with no band less than 6.0 or equivalent.	AUD\$ 13,050	AUD\$ 26,100	29
Master of Technology (Software Engineering)*	080497G	Full-time 2 Years 4 Trimesters	March, July & November	Melbourne, Sydney	IELTS 6.0 (Academic), with no band less than 6.0 or equivalent.	AUD\$ 13,050	AUD\$ 26,100	30

INTERNATIONAL STUDENT FEES

Course fees for tuition in this guide apply to international students studying on-campus in Australia. The fees listed are an annual amount, and they are based on a standard study load per year. Any variation to the study load will result in an adjustment to tuition fees. All fees are subject to annual review and may be adjusted. Fees apply to students commencing in 2020 only. Course tuition fees cover the full cost of tuition but exclude the cost of living (housing and food), medical insurance, textbooks, entertainment, telephone calls, transport, as well as non-compulsory course expenses.

Disclaimer: MIT teaching sites offer a range of undergraduate and postgraduate programs which are developed by Federation University. Under the relationship between Federation University and MIT, Federation University controls the quality of courses and confers qualifications, whilst MIT provides the facilities, lecturers, tutors and students services. Students enrolled in Federation University programs at MIT teaching sites are Federation University students and upon successful completion are awarded with Federation University degrees. Information contained in this guide was correct at the time of printing November 2019. MIT and Federation University reserve the right to alter any program, procedure or fee as deemed necessary. Prospective students should confirm program information by contacting either MIT Melbourne or MIT Sydney.

*Work-Integrated learning and project units in these programs may incur additional costs depending on the option chosen by the student. ⁷

Living in Australia

Australia is a beautiful, multicultural country with world-renowned natural attractions, quality of life and climate. The country is known for its Sydney Opera House, the Great Barrier Reef, a vast interior desert wilderness called the Outback, and unique animal species like kangaroos, koalas and the duck-billed platypus. Australia has a population of 25 million and is one of the most multicultural populations in the world. We have more than 300 different ancestries and 28% of our resident population is born overseas — that's nearly 7 million people.



COST OF LIVING

The cost of living will vary according to lifestyle and location. It is generally more affordable living in a regional area due to lower accommodation costs compared to living in a major city. Independent Tertiary Education Council Australia (ITECA) indicates the cost of living for 12 months is AUD\$21,041*.

Estimated living expenses are included below to help you prepare a budget. Additional expenses such as tuition fees, Overseas Student Health Cover and other study expenses are not included in this table. The costs below are an approximate guide only.

ACCOMMODATION [^]	COST PER WEEK
Hostels and Guesthouses	\$90 to \$150
Shared Rental	\$95 to \$215
On campus	\$110 to \$280
Homestay	\$235 to \$325
Rental	\$185 to \$440

OTHER LIVING EXPENSES [^]	COST PER WEEK
Groceries and eating out	\$80 to \$280
Gas, electricity	\$35 to \$140
Phone and Internet	\$20 to \$55
Public transport	\$15 to \$55
Car (after purchase)	\$150 to \$260
Entertainment	\$80 to \$150

[^]studyinaustralia.gov.au (October 2019)

*iteca.edu.au (October 2019)

Climate

The Australian climate varies greatly depending on location. The Victorian climate is considered temperate with four distinct seasons. New South Wales is considered to have a relatively mild climate with well-defined seasons that feature hot summers and cool winters.

Average Maximum Temperature (degrees Celsius)	Summer (December – February)	Autumn (March – May)	Winter (June – August)	Spring (September – November)
Sydney	26	22	17	22
Melbourne	25	20	14	19
Average Minimum Temperature (degrees Celsius)	Summer (December – February)	Autumn (March – May)	Winter (June – August)	Spring (September – November)
Sydney	18	14	8	13
Melbourne	14	11	7	10

Source: Bureau of Meteorology, October 2018.

Living in Melbourne

Melbourne is the capital of Victoria and Australia's second largest city. As home to over 5 million people - and over 140 different nationalities – it has grown to be Australia's most cultured city, recognised for its quality restaurants, outstanding arts and culture, and excellent shopping.

It is also Australia's sporting capital, home to world-class sporting events like the Melbourne Formula One Grand Prix, the Australian Open tennis, the Phillip Island Motorcycle Grand Prix, and an annual International Test Cricket series.

The environment is clean. The cost of living is affordable. The quality of housing and education is high. Melbourne has been voted 'The World's Most Liveable City', 7 years in a row.

For further information, please visit:
melbourne.vic.gov.au
visitmelbourne.com

FACTS AND FIGURES

Population: 5 million (Melbourne City & surrounding areas)

Time zone: UTC/GMT +10 hours.

Language: English. Australia is a multicultural country, and therefore, it is common to hear people speaking a variety of languages.

Currency: Australian Dollar (AUD\$).

Climate/Weather: Moderate oceanic.

It is often said that Melbourne has "four seasons in one day". The weather is quite unpredictable; therefore, you are advised to take an umbrella and a jumper whenever you go out, to be prepared for all

weather conditions. Hats, cool clothing and maximum UV protection (30+) sunscreen are basic necessities during summer, and a long sleeved-jacket and warm clothes are recommended for winter.
 Summer - December to February, warm and dry.
 Autumn - March to May.
 Winter - June to August, usually cool, with a mix of clear, sunny weather, and cold and damp conditions.
 Spring - September to November.



MIT Melbourne Campus

MIT Melbourne Campus is located in the heart of the city, situated among shops, restaurants, the Queen Victoria Market, and entertainment outlets, which gives you a host of options for relaxing between lectures. It is a short walk to some of Melbourne's favourite parks and gardens, all major banks, the central post office and is within easy access to public transport.

The campus offers you the perfect balance between study, work and play. The State Library of Victoria is a short walk away – and provides fantastic extra study resources for students.

The campus is filled with excellent teaching and learning facilities. These include modern computer labs, computer networking labs, wireless internet, a comprehensive library with the latest electronic information services, student lounge, prayer room, campus security, first-aid facilities, a career advisory service, study support and counselling.



TRAVELLING TO MELBOURNE MIT CAMPUS

The MIT Melbourne Campus is easily accessible by bus, train, tram or car.

For Melbourne public transport information, please visit ptv.vic.gov.au

Living in Sydney

Renowned as a dynamic and cosmopolitan city, Sydney combines excellent business and education facilities with great leisure activities. Sydney is famous for its World Heritage-listed Sydney Opera House and is one of the world's favourite cities.

Sydney is Australia's oldest and largest city and is set on one of the world's most stunning harbours, fringed by easy-to-reach, sandy beaches. The city has a sunny, moderate climate which contributes to Sydneysiders' relaxed lifestyle and love of the great outdoors. There are five major national parks around Sydney with 8,000 square kilometres of open space. Sydney's multicultural restaurant and cafe scene is enhanced by outstanding local fresh produce and world-class wines.

Sydney has a dynamic arts and culture scene and is home to some of Australia's leading arts organisations such as Opera Australia, the Sydney Theatre Company, Sydney Symphony and the Sydney Dance Company.

For further information, please visit: www.cityofsydney.nsw.gov.au

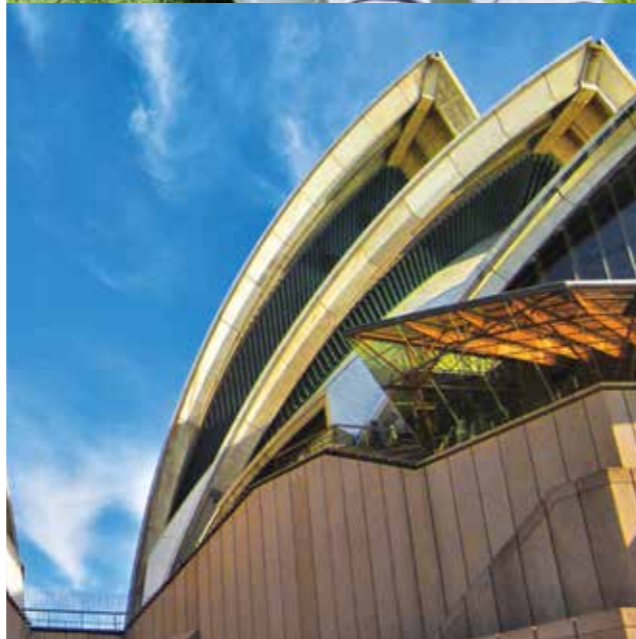
FACTS AND FIGURES

Population: over 5.25 million.
 Sydney is Australia's largest city
Time zone: UTC/GMT +10 hours.
Language: English. Australia is a multicultural country, and therefore, it is common to hear people speaking a variety of languages.
Currency: Australian Dollar (AUD\$).
Climate/Weather: Moderate oceanic – warm summers and mild winters. Hats, cool clothing and maximum UV protection (30+) sunscreen

are basic necessities during summer, and a long sleeved-jacket and warm clothes are recommended for winter.
 Summer - December to February, warm and dry.
 Autumn - March to May.
 Winter - June to August, usually cool, with a mix of clear, sunny weather, and cold and damp conditions.
 Spring - September to November.



MIT Sydney Campus building



MIT Sydney Campus

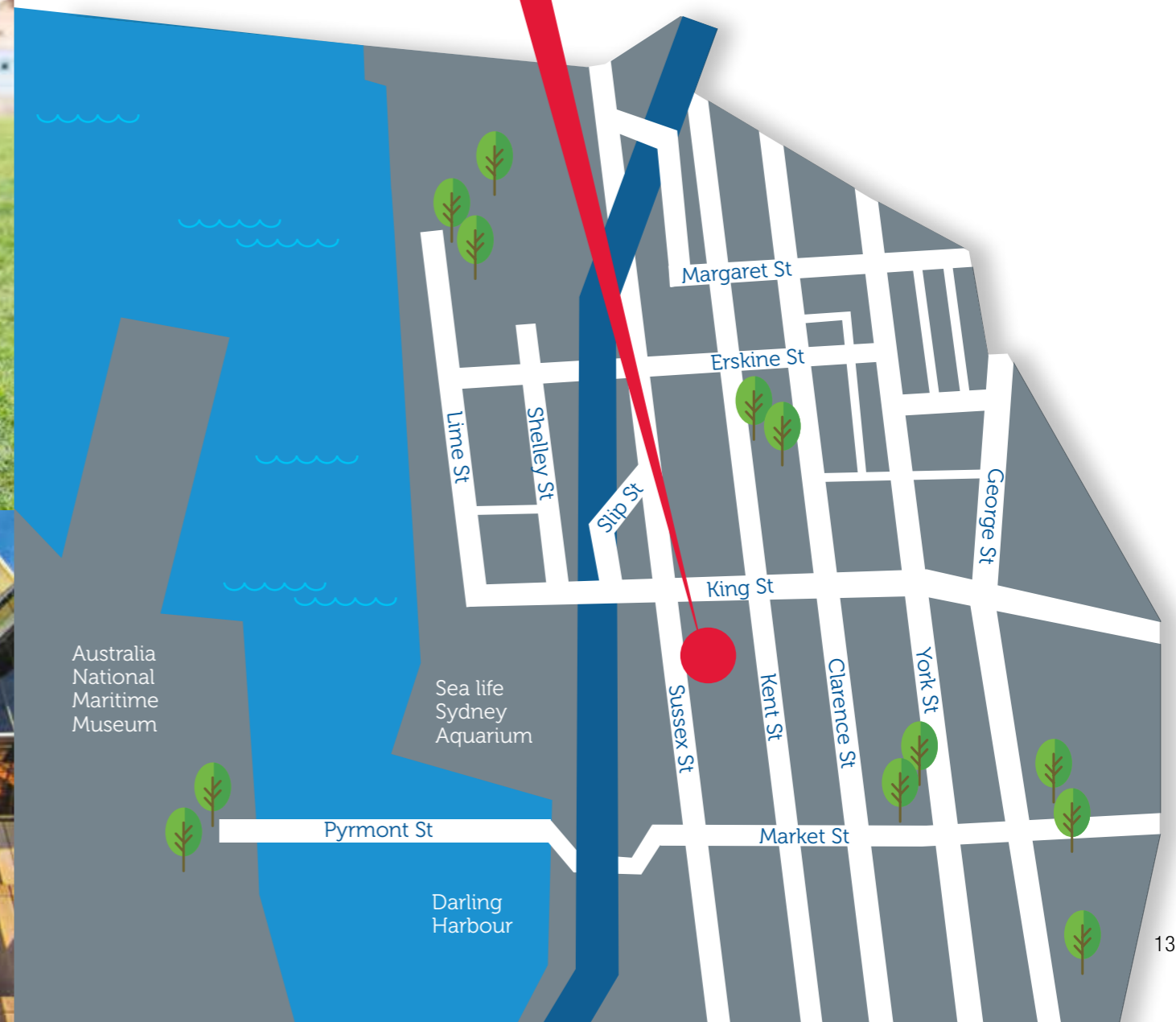
The MIT Sydney Campus is located in Sydney's Central Business District (CBD) next to Darling Harbour, one of the city's largest food and entertainment precincts. The campus is just a short walk from the Pitt Street Mall, Queen Victoria Building and Chinatown, and provides easy access to public transport and all the facilities of a world class city.

Campus facilities and services include state of the art teaching and learning facilities, modern computer labs, wireless internet, comprehensive library with the latest electronic information services, student lounge, prayer room, campus security, first-aid facilities, study support, counselling and career advisory service.

TRAVELLING TO SYDNEY MIT CAMPUS
 MIT Sydney Campus is easily reached by bus, train, ferry or car.

For Sydney public transport information, please visit www.transportnsw.info

**154-158
 SUSSEX STREET
 SYDNEY, NSW,
 2000, AUSTRALIA**



Teaching & Learning

A WIDE RANGE OF TEACHING AND LEARNING METHODS

Federation University at MIT gives you lots of different ways to learn. Courses are taught using a range of methods including: lectures, seminars, tutorials and laboratory sessions, group discussions and projects, individual research projects, class presentations, case methods and industry based projects.

As a rule, you will learn the core information in larger lectures. These are followed by smaller group practicals that allow you to further explore what you've been taught. Great importance is placed on understanding and applying theories and concepts. You will also be encouraged to critically examine different viewpoints of those theories.

YOU ARE AN INDEPENDENT INDIVIDUAL

Students are encouraged to ask questions and express personal viewpoints. You will be expected to spend a minimum of five to six hours per week on independent study for each course of study.

As with all universities, you will be expected to take responsibility for your own learning, and develop your own mature self-directed learning habits.

HELP WHEN YOU NEED IT

To help you, there are Study Skills workshops and mentor assistance offered throughout the trimester for students needing help with a particular course of study, or wanting to further develop their learning and personal management skills.



MIT Centre of Learning



Hi, I'm Dr Janette Poulton, Academic Coordinator of the MIT Centre of Learning.

Our role in the MIT Centre of Learning is to smooth your transition into higher education and support you to achieve your very best in your academic studies.



ALL THE LEARNING SUPPORT YOU NEED

To support you in meeting the expected study standards for your course, we've established a series of academic workshops. You can join workshops on presentation skills, teamwork, cross-cultural communication, digital literacy, critical thinking and more, designed to support you in your studies. In addition, because some learning steps are so important, we've established compulsory Foundation skills classes for all new students on the following subjects:

- Essay and report writing
- Time management
- Referencing
- Presentation skills
- Using Word and Excel
- Exam preparation

PRODUCING OUTSTANDING ASSIGNMENTS

To produce outstanding course assignments, you'll want all the support you can get. MIT's Centre of Learning provides you with one-on-one support and constructive feedback on your assignment work. We'll give you feedback on assignment structure, grammatical and language constructs, and how to avoid plagiarism and correctly reference your sources.

ACHIEVING ACADEMIC SUCCESS

For an even better chance of achieving academic excellence, we offer you a free mentoring service. Our Mentoring Program is designed to give you the opportunity to stretch your thinking in your chosen course of study in ways that perhaps, you hadn't considered.

MEET NEW PEOPLE

Join our 'chat and chew' sessions and meet new people. Our weekly Conversation Café meetings are designed to provide you with the opportunity to meet new people and hear the latest MIT news. It's also an opportunity to improve your English language skills, if English isn't your first language.

Student Wellbeing and Support



Hi, I'm Effie Evryniadis, Associate Director of the Office of Student Services and Engagement (OSSE) at MIT.

My team and I are committed to providing all our students with specialised support and engagement initiatives from before the commencement of your first class, to the time of your graduation and beyond.



YOUR QUESTIONS ANSWERED

We're sure you have lots of questions about studying and living in Australia. That's great, because we have the answers. Whether it's information about your accommodation options, campus activities or wellbeing services, we can help. All you have to do is ask.

BUDDY PROGRAM

We realise that sometimes talking to someone who has walked-in-your shoes is best. For that reason, you are assigned a senior student as your "buddy" at orientation. Your "buddy" is there to assist you in settling into student life both in and around our city campuses. This includes giving you tips on things such as the best places to buy affordable and healthy food.

PEER-MENTOR PROGRAM

Struggling with a particular unit of study? Sometimes you might feel more comfortable with one-to-one coaching from another student rather than your lecturer. Our peer-mentor program gives you the opportunity to connect with experienced students who have excelled with a distinction or above in your unit of study. Your mentor will share how they have achieved academic success and provide help with understanding the unit, completing assessment tasks and preparing for exams – all in a relaxed and friendly environment.

THEMED ACTIVITIES

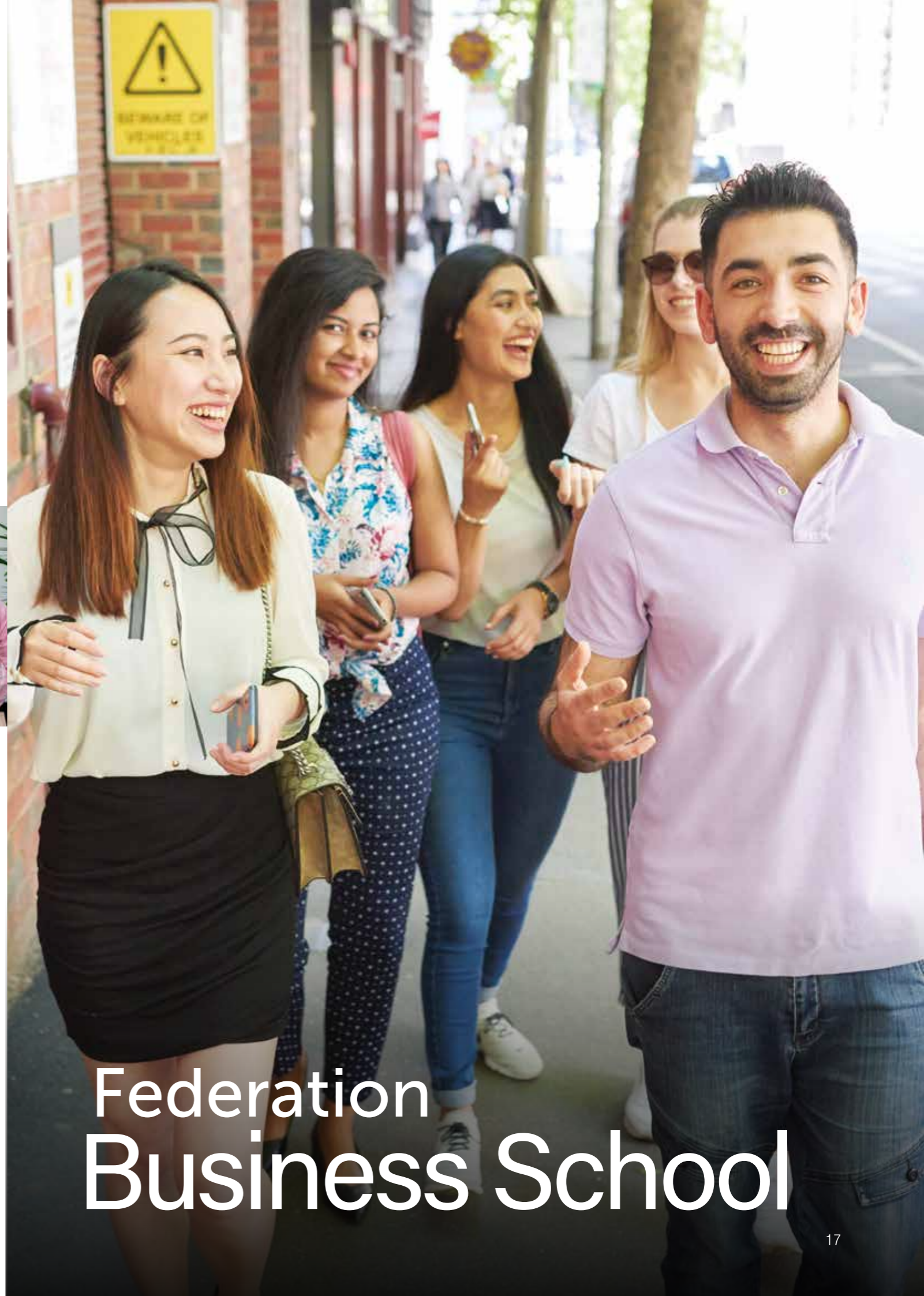
My team and I run an extensive suite of social (group movie nights, trivia nights, karaoke, bowling nights), cultural (music recitals), adventure (rock-climbing, snow-trip), sports (Cricket, soccer and Australian Rules football) and wellness (yoga, meditation and cooking class) activities throughout the academic year. These are just a small sample of the activities run for you to connect with fellow students and staff outside the classroom and experience what Australia has to offer.

STUDENT WELLBEING PROGRAM

Being away from your family and friends is always hard, especially for the first time and in the first year. My team of counselling professionals focus on your whole wellbeing by building up your resilience, motivation and persistence, which are traits that are common to all successful people. You are also provided with free and confidential advice, support and representation to assist you to successfully progress through your program of study at Federation University at MIT.

GET INVOLVED

Get more out of your time beyond your course! We provide you with lots of ways to make new friends, gain new experiences, and explore the incredible things Melbourne and Sydney have to offer. From joining the Cricket team, watching Aussie Rules Football to movie nights, karaoke and yoga, there's something for everyone!



Federation Business School

Bachelor of Commerce (Accounting)

CRICOS Program Code O44114D Availability: Melbourne, Sydney

Program duration: 3 years (6 Trimesters), Full-time

Academic Requirements: Successful completion of an Australian Year 12 or equivalent. Country specific requirements: Page 31

English Language Requirement: IELTS 6.0 (Academic), with no band less than 6.0 or equivalent.

Sample Study Program

Year 1 Trimester 1

- Principles of Accounting & Finance
- Fundamentals of Law
- Business Elective
- Understanding the Digital Revolution

Year 1 Trimester 2

- Principles of Economics
- Business Statistics
- Commercial Law
- Accounting Fundamentals

Year 2 Trimester 3

- Organisation Law
- Principles of Responsible Business
- Management Accounting 1
- Business Elective

Year 2 Trimester 4

- Financial Management
- Advanced Management Accounting
- Business Elective
- c

Year 3 Trimester 5

- Financial Accounting
- Income Tax Law & Practice
- Elective
- Elective

Year 3 Trimester 6

- Auditing
- Corporate Accounting
- Industry Based Case Studies
- Elective

PROGRAM OUTLINE

You're a natural with numbers. You would thrive on crunching the numbers for governments, companies or your own business. You're perfect for our Bachelor of Commerce (Accounting) degree if you're interested in the business world and the financial strategies and systems behind it. Chances are, you'll be offered work directly from your placement, like many of our graduates. You might end up as an accountant, stockbroker, a financial planner or a banker.

With a Bachelor of Commerce (Accounting) you will study accounting, law and economics and finance as part of your commerce degree, and can choose from subjects like taxation law, auditing and financial planning to specialise your skills in accounting. When you graduate from our degree, you can then go on to gain professional accounting accreditation.

CAREER OPPORTUNITIES

Careers include banker, public accountant and stockbroker. Graduates with an accounting specialisation are employed in a wide variety of commercial, government and professional settings.

PROFESSIONAL RECOGNITION

- CPA Australia
- The Institute of Chartered Accountants

You may also be eligible to apply for membership with:

- Australian Computing Society*
- Financial Services Institute of Australasia*

**Upon completion of nominated subjects in the Bachelor of Commerce*



"I've found that Federation University at MIT is one of those unique institutions which helps students in not only building their career but also in enhancing our distinctive competencies and skillsets. The Business School's curriculum is very precise and challenging - I've gained an enormous amount of knowledge and skills that I know will help me stand out in my career. Lecturers are also highly qualified and able to impart in-depth knowledge in subjects that are necessary to succeed in a dynamic corporate scenario. The atmosphere at MIT is very friendly, and the staff are always ready to suggest the best solution to your problems. For example, I've received tips and tricks from the librarians – something that has helped my learning as I'm dyslexic. Besides the amazing study atmosphere, MIT also has a fun atmosphere that's generated from social events on and off campus – it fosters the kind of community that most universities only dream of!"

Senuri Kumarage, Sri Lanka
Bachelor of Commerce (Accounting)

Bachelor of Business (Management)

CRICOS Program Code O88132E Availability: Melbourne, Sydney

Program duration: 3 years (6 Trimesters), Full-time

Academic Requirements: Successful completion of an Australian Year 12 or equivalent. Country specific requirements: Page 31

English Language Requirement: IELTS 6.0 (Academic), with no band less than 6.0 or equivalent.

PROGRAM OUTLINE

You love working with people and you're a problem solver; a natural leader. You want a career that's challenging, fast-paced and dynamic.

With our Bachelor of Business (Management) degree, you'll learn how to coordinate people and resources for the benefit of a company. You can even use your skills to start your own business.

When you graduate, you'll be ready to enter the corporate world, whether it's in human resources, business development or project management.

CAREER OPPORTUNITIES

- Business owner
- Human resource management
- Manager
- Organisational management
- Project management

PROFESSIONAL RECOGNITION

Upon completion of the Bachelor of Business (Management), students may apply for membership of the Australian Institute of Management.

**Eligibility may depend on units completed.*



"I chose to study at Federation University at MIT because of the academic credentials of the university and how well the content met my needs. In addition, the best thing about studying here is the lecturers and the high quality of the curriculum. The relatively small classes coupled with how receptive the lecturers are to sharing their knowledge has helped me to achieve such high results. A strong focus on case studies has provided me with valuable insight on best practices around the world, and the interactive and dynamic nature of classes offers excellent opportunities to extend my personal network. Some of my favourite courses were Management Principles, Fundamentals of Law, Principles of Economics, and Introduction to HRM. The Professors for these subjects were amazing and also provided us with great advice for our future. I highly recommend Federation University at MIT."

Ishara Ranaweera, Sri Lanka
Bachelor of Business (Management)

Sample Study Program

Year 1 Trimester 1

- Business Elective
- Management Principles
- Principles of Accounting and Finance
- Fundamentals of Law

Year 1 Trimester 2

- Principles of Economics
- Introduction to Human Resource Management
- Introduction of Marketing
- Business Elective

Year 2 Trimester 3

- Principles of Responsible Business
- Managerial Skills
- Managing People At Work
- Business Communication

Year 2 Trimester 4

- Project Management
- Elective
- Elective
- Elective

Year 3 Trimester 5

- Business Statistics
- Management of Change & Organisation Development
- Creativity and Innovation
- Elective

Year 3 Trimester 6

- Industry Based Case Studies
- Strategic Management
- Designing Effective Organisations
- Business Elective

Graduate Diploma of Management

CRICOS Program Code 085208C Availability: Melbourne, Sydney

Program duration: 1.5 years (3 Trimesters), Full-time

Academic Requirements: Successful completion of an Australian Bachelor degree or overseas equivalent. Applicants holding other academic or professional qualifications and/or with no work experience may also be granted admission to the program following an evaluation of their academic and professional skills. Professional qualification and work experience will be assessed by the Federation University Program Co-ordinator.

English Language Requirement: IELTS 6.0 (Academic), with no band less than 6.0 or equivalent.

Sample Study Program

Year 1 Trimester 1

- Business, Society and the Planet
- Elective
- Elective
- Elective

Year 1 Trimester 2

- Elective
- Elective
- Elective
- Elective

Year 2 Trimester 3

- Elective
- Elective
- Elective
- Elective

PROGRAM OUTLINE

This program has been designed as both an entry and exit point for the Master of Business Administration.

CAREER OPPORTUNITIES

This program is designed for managers to upgrade their skills and qualifications and to prepare them for access to career opportunities which will have become evident to them in their current employment, or new opportunities with alternative employers following completion of the program. Careers include business analyst, business consultant, business manager, business owner, general manager, human resources manager, marketing manager, researcher and strategic planner.



"As an MBA student with Federation University at MIT, the flexibility of the timetable allows minimal time spent on campus, thus maximising time for studying, socialising and work. In the classrooms, the cohesion between the teacher and the student is of the highest calibre. Coming from an engineering background, studying an MBA has enabled me to look into the fields of leadership, accounting, marketing and law. This MBA program has given me maximum value, compared with other tertiary providers in Australia.

The recent upgrades to the library have also made the university a more study focused environment due to the layout and the design of the library. Moreover, from a social perspective, MIT holds a lot of events to engage students like sporting events, social gatherings and trivia nights."

Youssef Awawdeh, Jordan

Master of Business Administration

Graduate Diploma of Professional Accounting

CRICOS Program Code 085209B Availability: Melbourne, Sydney

Program duration: 1.5 years (3 Trimesters), Full-time

Academic Requirements: Successful completion of an Australian Bachelor degree or overseas equivalent. Applicants holding other academic or professional qualifications and/or with no work experience may also be granted admission to the program following an evaluation of their academic and professional skills. Professional qualification and work experience will be assessed by Federation University, faculty Program Co-ordinator.

English Language Requirement: IELTS 6.0 (Academic), with no band less than 6.0 or equivalent.

PROGRAM OUTLINE

The Graduate Diploma of Professional Accounting has been developed as both an entry point and an exit point for the Master of Professional Accounting. Please see Master of Professional Accounting (on page 22) for further program outline information.

CAREER OPPORTUNITIES

The Graduate Diploma of Professional Accounting will enable you to pursue a pathway to qualification as a professional accountant.

- Banker
- Professional Accountant
- Stockbroker

Sample Study Program

Year 1 Trimester 1

- Commercial Law
- Business Economics
- Accounting Concepts and Practices
- Information Systems Design and Development for Accountants

Year 1 Trimester 2

- Corporate Law
- Research and Statistical Methods for Business
- Corporate Accounting
- Cost and Management Accounting

Year 2 Trimester 3

- Financial Accounting
- Auditing and Assurance Services
- Financial Management
- Taxation Law and Practice



"Before choosing where to study in Australia, I made comparisons between different institutes and found that Federation University is one of the best as it provides practical knowledge to students and has modern classes with the latest technology. The University provides a good support system for international students which has been really helpful for students like me who are new to Australian culture. One of the key learnings in my course has been how to work in multicultural groups and understanding the various cultures of my groupmates. Our assignments and tutorials are very practical – for example, we've learnt how to use XERO Accounting software which is a common accounting tool used in industry today. The MPA course is professionally designed and will help me polish my accounting and business skills. Career-wise I want to work at the managerial level in a multinational firm in my home country – something my degree is helping me to achieve."

Priyanka Golan, India

Master of Professional Accounting

Master of Professional Accounting

CRICOS Program Code 085211G Availability: Melbourne, Sydney

Program duration: 2 years (4 Trimesters), Full-time

Academic Requirements: An Australian Bachelor degree or an equivalent academic qualification.

This program is intended for applicants with an undergraduate degree in a non-accounting discipline who are looking for a career in professional accounting. It can also meet the needs of people who have significant experience working in accounting and who now wish to increase their knowledge, skills, recognition and employment options by having a high-level qualification in this area. In exceptional circumstances, applicants who do not have a bachelor's degree may be admitted on the basis of relevant work experience, and demonstrated capacity to undertake the program as determined by Federation Business School, following an evaluation of their academic and professional skills.

English Language Requirement: IELTS 6.0 (Academic), with no band less than 6.0 or equivalent.

Sample Study Program

Year 1 Trimester 1

- Accounting Concepts and Practices
- Information Systems Design and Development for Accountants
- Business Economics
- Commercial Law

Year 1 Trimester 2

- Corporate Accounting
- Cost and Management Accounting
- Corporate Law
- Research and Statistical Methods for Business

Year 2 Trimester 3

- Financial Accounting
- Auditing and Assurance Services
- Financial Management
- Taxation Law and Practice

Year 2 Trimester 4

- Business, Society and the Planet
- Business Elective
- Business Elective
- Business Elective

"Through my degree, I've learnt an immense amount of skills and knowledge that is required to become a professional accountant. The curriculum has challenged me, and my lecturers' support is the key factor that has motivated me to step out of my comfort zone and analyse the world. I am from a small city, and living and studying in Australia initially gave me a cultural shock as it is so different to my home country. Thankfully, MIT offers a wide range of services, like counselling, career guidance, academic support and library services - all which I've been using."

Sanjog Giri, Nepal

Master of Professional Accounting

PROGRAM OUTLINE

The Master of Professional Accounting has been designed for students whose first degree is in a non-accounting field. It provides you with a comprehensive program of study in Accounting theory and practice that is recognised by CPA Australia, enabling you to pursue a pathway to qualification as a professional accountant. In addition to core subject areas of Accounting, Financial Management and Auditing. You will be introduced to related disciplines, including Business Law, Taxation, Information Systems, Economics and Quantitative Methods.

CAREER OPPORTUNITIES

Graduates may be employed in a wide variety of commercial, government and professional settings. Careers include banker, professional accountant and stockbroker. The Master of Professional Accounting will enable you to pursue a pathway to qualify as a professional accountant.

PROFESSIONAL RECOGNITION

This program is recognised by Certified Practising Accountants (CPA) Australia.



Master of Business Administration

CRICOS Program Code 085210J Availability: Melbourne, Sydney

Program duration: 2 years (4 Trimesters), Full-time

Academic Requirements: An Australian Bachelor degree or an equivalent academic qualification. Applicants holding other academic or professional qualifications with or without work experience may also be granted admission to the program following an evaluation of their academic and professional skills. Professional qualification and work experience will be assessed by the faculty Program Coordinator.

English Language Requirement: IELTS 6.0 (Academic), with no band less than 6.0 or equivalent.

PROGRAM OUTLINE

Excel in the rapidly changing business world with our MBA and become a global business leader, world-class manager or successful entrepreneur. You have an existing degree and now want a competitive business edge.

You'll learn the suite of most important business skills like accounting, finance, human resource management, marketing and more. You'll also boost your leadership skills and workshop your own management style with our managerial courses. Then you'll take the lead with your own project, strategically planning an enterprise. Plus, if you're studying our 16 course MBA, you can choose subjects from our other postgraduate business courses like strategic marketing, business economics or entrepreneurship.

Depending on your previous studies and experience, you'll take either our 12-course MBA over 1½ years of full-time study, or our 16-course MBA over two years of full-time study.

CAREER OPPORTUNITIES

As the business world becomes increasingly volatile and changing, the trend toward further education in the workplace is increasing. An MBA can be one of the critical keys to furthering any business career. Careers include business analyst, business consultant, business manager, business owner, general manager, human resources manager, manager, marketing manager, researcher and strategic planner.

Sample Study Program

Year 1 Trimester 1

- Business, Society and the Planet
- MBA Elective
- MBA Elective
- MBA Elective

Year 1 Trimester 2

- MBA Elective
- MBA Elective
- MBA Elective
- MBA Elective

Year 2 Trimester 3

- MBA Elective
- MBA Elective
- MBA Elective
- Strategic Management

Year 2 Trimester 4

- MBA Elective
- MBA Elective
- MBA Elective
- Strategic Enterprise Planning

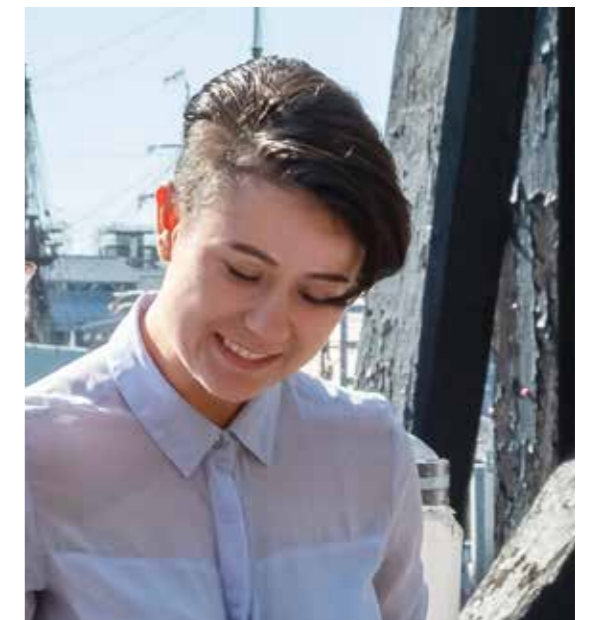
"As a 16-year-old, my dream was to do an MBA. Finding a university like Federation University in the heart of Sydney CBD was a dream come true. The environment here is also a big plus - whenever I have questions, the staff are always able to advise and recommend a way forward. In the future, I know I can come back for more direction should I need it."

From the start I was highly motivated to do well and the teachers here were able to challenge and motivate me to do more than I thought I was capable of. I was actually pretty nervous about doing the "Research and Statistical Methods for Business" subject as statistics is not my forte at all. However, my lecturer made the content easier to digest and I ended up with great grades.

I'm confident too I'll find a good management position in the customer service and hospitality industry because of the way I was taught here at MIT. I learnt great employability skills like ethics, cultural empathy, and even how to run a business and save the planet at the same time. These are key skills I'll be able to use in every business setting."

Ekaterina Radionova, Russia

Master of Business Administration



School of Engineering & IT



Bachelor of Information Technology

CRICOS Program Code 074009A Availability: Melbourne, Sydney

Program duration: 3 years (6 Trimesters), Full-time

Academic Requirements: Successful completion of an Australian Year 12 or overseas equivalent. Country specific requirements: Page 31

English Language Requirement: IELTS 6.0 (Academic), with no band less than 5.5 or equivalent.

PROGRAM OUTLINE

An exciting industry where change is rapid. IT is a key skill and the foundation for a broad range of careers. Career roles are diverse and varied, and employment in IT is projected to continue to grow. Employers are looking for innovative people, people who can solve problems and engage with the bigger picture.

As a graduate of this program, you will have been provided with specific knowledge of data modelling - systems software and data analysis, and will have developed skills, which will help you to remain at the forefront of this vibrant and rapidly developing sector.

You will have learnt how to create a graphical model, or a data model of how data will be stored. You will have learnt how to facilitate and execute the installation and maintenance of system software, review system software updates, and tailor system software to maximise hardware functionality.

CAREER OPPORTUNITIES

The Bachelor of Information Technology will provide you with a fundamental knowledge of IT (along with skills in key areas including cloud computing and mobile application development) and allow you to keep your options wide open in the IT industry.

The flexibility of this program leads to a diverse range of career opportunities, as each student gets to put their own stamp on the program, and as such determine the career path they will follow.

- Applications developer
- Business intelligence officer
- Communications officer
- Computer engineer
- Computer systems engineer
- Data warehouse administrator
- Database administrator
- Database administrator developer
- Hardware technician
- IT consultant
- IT manager
- Information officer
- Integration analyst
- Multimedia application developer
- Multimedia developer
- Network engineer
- Network manager
- Programmer
- Project manager
- Software engineer
- Support officer
- Systems administrator
- Systems analyst
- Systems designer
- Systems manager
- Team leader
- Training officer
- Web designer

PROFESSIONAL RECOGNITION

This program holds Professional Level accreditation with the Australian Computer Society (ACS).

Sample Study Program

Year 1 Trimester 1

- Understanding the Digital Revolution
- Communications and Technology
- IT Problem Solving
- Networking and Security
- IT Professional Engagement

Year 1 Trimester 2

- Big Data & Analytics
- Cloud & Enterprise Computing
- Mobile Development Fundamentals
- Game Development Fundamentals

Year 2 Trimester 3

- General Elective
- Computing Elective or Stream Specialisation
- Systems Modelling
- Web Design

Year 2 Trimester 4

- General Elective
- Computing Elective or Stream Specialisation
- Data Modelling
- IT Project Management Techniques

Year 3 Trimester 5

- Project 1*
- General Elective
- Computing Elective or Stream Specialisation
- User Experience

Year 3 Trimester 6

- Project 2*
- General Elective
- Computing Elective or Stream Specialisation
- Professionalism & Entrepreneurship

**Project may incur additional costs depending on the option chosen by the student.*



"Federation University at MIT is at the centre of Melbourne, so one can never be bored while studying at this location as there's so much to do! I've learnt so many interesting subjects through my degree, like web designing, game development and project management and have become familiar with coding, computer networking and database – all skills that will be useful when I'm working in industry. My lecturers are approachable, and always go above and beyond to help us. They are responsive to our queries, and provide amazing guidance. Career-wise, I plan on getting experience working in Australia and eventually want to build my own IT company in my home country that will focus on introducing the latest technological revolutions to the country."

Rakshya Kunwar, Nepal

Bachelor of Information Technology

Bachelor of Information Technology

(Business Information Systems)

CRICOS Program Code 092106F Availability: Melbourne, Sydney

Program duration: 3 years (6 Trimesters), Full-time

Academic Requirements: Successful completion of an Australian Year 12 or overseas equivalent. Country specific requirements: Page 31

English Language Requirement: IELTS 6.0 (Academic), with no band less than 5.5 or equivalent.

PROGRAM OUTLINE

Business information systems enables you to develop skills in business processes, and study data and information management, enterprise systems and business intelligence, which are essential to employers from hospitals to government, engineering to logistics and more.

This degree examines - with a strong emphasis on electronic commerce - the organisational and technological issues that are needed for the analysis and design of business information systems. It provides a state-of-the-art program that considers modern principles and theories of computing together with practical applications of technology.

You'll explore information security, multimedia, knowledge management, databases, emerging technologies in business and more. By choosing electives to complement your study in IT, you can learn important business skills needed to manage people and projects. You will become familiar with the latest developments in IT, the different types of tools and their applications. You will learn the theory and practice of managing people in the workplace and build skills to understand and analyse workplace behaviour.

CAREER OPPORTUNITIES

Careers include business analyst, computer engineer, computer systems auditor, computer systems engineer, data modeller, database administrator, database designer, electronic commerce administrator, hardware technician, business process analyst, enterprise systems analyst, information and data manager, information management administrator, information manager, sales representative, specialist consultant, systems analyst, systems designer, training and support team leader and training manager.

PROFESSIONAL RECOGNITION

This program holds Professional Level accreditation with the Australian Computer Society (ACS).

**Project may incur additional costs depending on the option chosen by the student.*



"This course is designed perfectly for those who want to apply technology in doing business. It starts with fundamental level subjects and builds up to more advanced and specialised topics, creating a solid foundation so we are ready to tackle the tougher material later on in the course. The way the lectures and lab sessions are designed is also a great way to learn. Theoretical knowledge is imparted during the lecture, followed by application of this theory to real-world problems during the lab sessions. It gives students strong specialist knowledge in their major, with solid practical experience to stand out in the job market. I've been impressed by the diversity of conferences and career workshops provided by MIT which has given me lots of opportunities to network and prepare for my career. Furthermore, the institute has modern computer labs, and an expert team of academics who are always willing to provide support to students whenever they are in need."

Nhat Khanh Huynh, Vietnam
Bachelor of IT (Business Information Systems)

Sample Study Program

Year 1 Trimester 1

- Understanding the Digital Revolution
- Communications and Technology
- IT Problem Solving
- Networking and Security
- IT Professional Engagement

Year 1 Trimester 2

- Big Data and Analytics
- Cloud and Enterprise Computing
- Mobile Development Fundamental
- Game Development Fundamentals

Year 2 Trimester 3

- Systems Modelling
- Web Design
- Emerging Information Systems
- General Elective 1

Year 2 Trimester 4

- Data Modelling
- IT Project Management Techniques
- Analysing the Modern Business
- General Elective 2

Year 3 Trimester 5

- Project 1*
- User Experience
- General Elective 3
- Business Analytics and Decision Support

Year 3 Trimester 6

- Professionalism and Entrepreneurship
- Project 2*
- IT Strategy and Governance
- General Elective 4

Graduate Diploma of Technology

(Enterprise Systems and Business Analytics)

CRICOS Program Code 095031G Availability: Melbourne, Sydney

Program duration: 1.5 years (3 Trimesters), Full-time

Academic Requirements: Successful completion of a recognised 3-year Australian Bachelor degree or overseas equivalent.

English Language Requirement: IELTS 6.0 (Academic), with no band less than 6.0 or equivalent.

PROGRAM OUTLINE

This major includes courses that utilise SAP - the world's largest enterprise software company. Students will be well prepared to undertake SAP certification if desired.

Students enrolled in SAP related courses will have the option to choose from two pathways, ERP advance (Fed Course) and ERP specialisation (Fed Course + SAP Certification). Both these pathways comprise of lectures, tutorials and laboratories. This study content is based on Federation University and SAP uAcademy material.

SAP facility enables students from Federation University to undertake SAP Associate Consultant Certification training via e-learning. Federation University will be offering a number of programs which will extend the university's SAP related curriculum. The uAcademy will be accessible anywhere in Australia via online facilities. Students can study at their own pace with the support of an online call centre.

CAREER OPPORTUNITIES

There is a shortage of skilled IT workers in new growth areas such as cloud computing, mobility, data warehousing, business intelligence, and big data techniques.

Graduates find employment as:

- ERP business analyst
- ERP data analyst
- ERP systems operation Functional analyst
- SAP consultant



Sample Study Program

Year 1 Trimester 1

- Understanding the Digital Revolution
- Networking and Security
- Big Data and Analytics
- Foundations of Programming
- IT Professional Engagement

Year 1 Trimester 2

- IT Service Management and Professional Culture
- Business Process Analytics and Change
- Professional Research and Communication
- Business Intelligence and Data Warehousing

Year 2 Trimester 3

- Enterprise Systems
- Leadership In IT Project Management
- Real Time Analytics
- Supply Chain Operations and Management

"Through this degree, I've had the opportunity to develop skills in different types of software such as SAP, Teradata and SAS. I'm also preparing for SAP certification related to business processes, business intelligence and HANA. Furthermore, due to large portions of courses having group assignments and presentations, I've picked up valuable skills in public speaking and presenting and now feel more confident if I were to present my findings to my future managers and CEOs. I've learned how to think critically, and engage my team members in a high level of collaboration so we all benefit from teamwork. What's great is that the content of our tutorial and lab work is based on practical aspects of a workplace. For instance, in lab we've used SAP, Tableau and Lumira - all of which can be applied in current and future workplaces. I'm confident that this degree will give me the technical and soft skills to become a data analyst once I graduate."

Aavritti Bhusal Pokhrel, Nepal

Master of Technology (Enterprise Systems and Business Analytics)

Graduate Diploma of Technology (Software Engineering)

CRICOS Program Code 080506M Availability: Melbourne, Sydney

Program duration: 1.5 years (3 Trimesters), Full-time

Academic Requirements: Successful completion of a recognised 3-year Australian bachelor degree or overseas equivalent.

English Language Requirement: IELTS 6.0 (Academic), with no band less than 6.0 or equivalent.

Sample Study Program

Year 1 Trimester 1

- Understanding the Digital Revolution
- Networking and Security
- Big Data and Analytics
- Foundations of Programming
- IT Professional Engagement

Year 1 Trimester 2

- Comparative Programming Languages
- Business Process Analytics and Change
- Professional Research and Communication
- Business Intelligence & Data Warehousing

Year 2 Trimester 3

- IT Service Management and Professional Culture
- Enterprise Systems
- Software Engineering Methodologies
- Leadership in IT Project Management

PROGRAM OUTLINE

Graduates of this program will have the specialist knowledge required to understand and implement advanced software engineering techniques - design, implement and maintain IT systems using a well-informed software engineering approach and create high quality software in a systematic and efficient manner. Graduates may find employment in a wide range of industries including security and defence, education, aerospace, health, business and finance.

CAREER OPPORTUNITIES

Careers include programmer, SAP consultant, software analyst, software engineer, systems administrator, systems designer and systems tester.

As a software engineer you will create, maintain and modify computer software as well as analyse current software products. You will also evaluate new programming tools and techniques.

"Big Data and Analytics is one of my favorite subjects in this degree and I would eventually like to pursue a career in this field. The knowledge I've gained about databases, Hadoop, visual tools, and hands on experience with SQL and Power BI are all very practical skills required in the industry. Furthermore, the software engineering courses in this degree have equipped me with a wide range of knowledge in software design, analysis and methodologies. It has taught me to think logically and apply the correct scientific methods so as to analyse the systems and draw conclusions – all skills that I know will be of tremendous help when I work in the field of big data."

Ruirui Yang, China

Master of Technology (Software Engineering)

Master of Technology (Enterprise Systems and Business Analytics)

CRICOS Program Code 095030G Availability: Melbourne, Sydney

Program duration: 2 Years (4 Trimesters), Full-time

Academic Requirements: Successful completion of a recognised 3-year Australian bachelor degree or overseas equivalent.

English Language Requirement: IELTS 6.0 (Academic), with no band less than 6.0 or equivalent.

PROGRAM OUTLINE

Designed to prepare students to succeed in roles that use Enterprise System (ES) Technology to manage, integrate and expand business endeavours. This post-graduate program gives students the opportunity to gain a deep understanding of relevant topics and technology pertaining to ES (like ERP, SCM, and CRM), BPR, Big Data, Business Analytics, IS Security, Project Management and IT strategy, using cutting edge technologies from leading vendors like SAP, IBM, SAS and Teradata. Students will participate in ERP simulation games which teach ERP concepts "by doing".

This program provides students with the opportunity to gain up-to-date knowledge and skills to analyse, implement and use ES. It further enhances student ability to comprehend how and why these systems provide economic, technological, operational and strategic value to an adopting organisation. It unleashes the strategies to manage ES implementation in order to achieve the anticipated benefits.

To provide hands on experience with ES, courses in this program are embedded with softwares from leading ES vendors like SAP. Students not only develop skills in learning SAP but also gain the opportunity to prepare for SAP certifications related to business processes, business intelligence and HANA. By doing this, students will have a competitive advantage in the job market.

CAREER OPPORTUNITIES

There is a shortage of skilled IT workers in new growth areas such as mobility, data warehousing, business intelligence, and big data techniques. Careers include business consultant, communication manager, ERP business analyst, ERP data analyst, ERP project manager, ERP systems operation, functional analyst, marketing manager, programmer, SAP consultant, software analyst, systems administrator, systems designer, systems tester, application consultant, developer, solution engineer, solution expert, sales executive, account executive

PROFESSIONAL RECOGNITION

This program holds Professional Provisional Level accreditation with the Australian Computer Society (ACS).

Sample Study Program

Year 1 Trimester 1

- Understanding the Digital Revolution
- Networking and Security
- Big Data and Analytics
- Foundations of Programming
- IT Professional Engagement

Year 1 Trimester 2

- Enterprise Systems
- Business Process Analytics and Change
- Professional Research and Communication
- Business Intelligence and Data Warehousing

Year 2 Trimester 3

- IT Service Management and Professional Culture
- Leadership in IT Project Management
- Real Time Analytics
- Supply Chain Operations and Management

Year 2 Trimester 4

- Masters Project*

SAP Accreditation Costs**

Optional SAP Training and Certification: \$2,000-2,500. It will be the student's responsibility to pay the additional \$2000-\$2500 if they wish to obtain SAP training and certification after undertaking SAP related courses (Data Warehousing and RealTime Analytics).

**SAP Cost (examination and certification) is over and above Federation University tuition fees and may be subject to change without prior notice

SAP ACCREDITATION

What is ERP (Enterprise Resource Planning)? SAP's enterprise resource planning (ERP) software is a proven, trusted foundation – built to support the world's largest organisations as well as small and midsize companies in 25 different industries. Leverage role based access to critical data, applications and analytical tools – and streamline your processes across procurement, manufacturing, service, sales, finance, and human resources. SAP is the most significant player in ERP systems on the world stage – with more than 60% market saturation. SAP training and certification opens a whole world of employment opportunities, with SAP consultants commanding very large remunerations. Federation University Australia is proud to be recognised as a SAP education partner, and a member of the SAP University Alliance Program (UAP) and SAP University Academy (U-Academy).

SAP training and certification options The cost listed above are to obtain SAP certification. Whilst these costs are additional to the Federation University tuition fees, the overall cost of obtaining SAP certification via Federation University is significantly below standard industry cost per course. For full Federation University fee information, please refer to our fees website.



Master of Technology (Software Engineering)

CRICOS Program Code 080497G Availability: Melbourne, Sydney

Program duration: 2 Years (4 Trimesters), Full-time

Academic Requirements: Successful completion of a recognised 3-year Australian bachelor degree or overseas equivalent.

English Language Requirement: IELTS 6.0 (Academic), with no band less than 6.0 or equivalent.

PROGRAM OUTLINE

Graduates of this program will have the specialist knowledge required to understand and implement advanced software engineering techniques - design, implement and maintain IT systems using a well-informed software engineering approach and create high quality software in a systematic and efficient manner. Graduates may find employment in a wide range of industries including security and defence, education, aerospace, health, business and finance.

CAREER OPPORTUNITIES

Graduates may find employment in a variety of industries with the production of medium to large scale software. Careers include programmer, SAP consultant, software analyst, systems administrator, systems designer and systems tester.

PROFESSIONAL RECOGNITION

This program holds Professional Provisional Level accreditation with the Australian Computer Society (ACS).



Sample Study Program

Year 1 Trimester 1

- Understanding the Digital Revolution
- Networking and Security
- Big Data and Analytics
- Foundations of Programming
- IT Professional Engagement

Year 1 Trimester 2

- Enterprise Systems
- Software Testing
- Professional Research and Communication
- Software Engineering Methodologies

Year 2 Trimester 3

- Comparative Programming Languages
- Leadership in IT Project Management
- IT Service Management & Professional Culture
- Software Engineering: Analysis and Design

Year 2 Trimester 4

- Masters Project*

**Project may incur additional costs depending on the option chosen by the student.*

"My degree is fully accredited by the Australian Computer Society (ACS) so it will be globally recognised. In addition to that, I'll graduate with experience in working with international peers so I'll have both the global qualification and the global experience from Federation University at MIT.

When choosing where I would do my Masters degree, Federation University was an obvious choice as I had watched a friend of mine do this course and saw him get a good job working with a software developer.

The lecturers here are highly qualified and great at teaching. My 'Software Engineering and Methodologies' lecturer has been excellent! I was afraid I'd never understand the content, but as she is such a good communicator, I've been able to understand the subject. I'm also learning soft skills like teamwork and cultural empathy which is really important in this day and age. My peers are from China, India and Nepal so I'm learning how to work in an international team. In the process of working on our project for the program, we've broken down barriers and become friends as well."

Talar Menassa, Lebanon

Master of Technology (Software Engineering)

Entry Requirements

UNDERGRADUATE COURSES

Applicants must be over 18 years of age at the time the Confirmation of Enrolment (CoE) is issued. Prospective students must have completed Australian Year 12 or overseas equivalent (refer to the table opposite).

Some courses may require additional specific entry requirements.

POSTGRADUATE COURSES

Prospective students must have completed an Australian bachelor degree or overseas equivalent. Some courses may require additional specific entry requirements.

TABLE OF EQUIVALENCE

The equivalence of qualifications from countries not listed in the table opposite will be assessed individually.

Country	Minimum academic requirement: Australian Year 12 equivalent
Global	GCE A Level with 5 points calculated on 2 or 3 A/VAS level subjects. Advanced Level mark A=5, B=4, C=3, D=2, E=1. Advanced Subsidiary Level mark calculated as half of A level points. International Baccalaureate Diploma (IB) with a minimum score of 24 from 6 subjects
Australia	Completion of Year 12 OR Foundation program
Bangladesh	Higher School Certificate (HSC) in First Division with GPA 3.5 or 60%
China	Gao San (Senior high Year 3) with an average of 80% in four academic subjects OR 高考 Gao Kao cut-off score for Tier 2 Chinese Universities OR Completion of one year post-secondary study with at least an average score of 70% at a recognised institution.
Colombia	Completion of the first year of a Bachelor degree
Hong Kong	HKDSE with 15 points calculated on sum of 4 core subjects & 2 electives, where 5**=6, 5*=6, 5=5, 4=4, 3=3, 2=2, 1=1; A*=6, A=5, B=4, C=3, D=2, E=1; and Attained with Distinction = 3, Attained = 1
India	Completion of All India Senior School Certificate (CBSE) or Indian School Certificate (CISCE) with an average of 60% in best four academic subjects* OR Higher Secondary Certificate with an average of 70% (for Punjab and Haryana) or 65% (for other State Boards) in best four academic subjects* **excludes local languages, work experience, physical education and other non-academic subjects
Indonesia	SMA (Sekolah Menengah Atas) with an overall average of 7.0, or GCE A-levels with passing grades in three subjects
Iran	Pre-University Certificate or successful completion of the National High School Diploma with an overall average of 13 (out of 20)
Japan	Kotogakko Sotsugyo Shosho (Upper Secondary School Certificate of Graduation) with an overall average of 2.5 (out of 4)
Kenya	Kenya Certificate of Secondary Education (KCSE) with grade B in eight subjects OR satisfactory completion of one year post-secondary study at a recognised institution
Korea, Republic of	Imnumgye Kodung Hakkyo Choeupchang (Upper Secondary Certificate) with overall pass of 65%
Malaysia	Sijil Tinggi Pelajaran Malaysia (STPM) with a score of 6 points calculated on the sum of 3 subjects, where A=5, B=4, C=3, D=2, E=1. OR Chinese independent high school Unified Examination Certificate (UEC-SML) with a score of 12 points calculated on the sum of the best 5 academic subjects (excluding English general paper, Chinese, Bahasa Malaysia) where A1=8, A2=7, B3=6, B4=5, B5=4, B6=3, C7=2, C8=1.
Mongolia	Senior Middle School Graduation Certificate with average of 85% in final year results
Nepal	Higher Secondary Certificate (HSC) with average of 60% OR National Examination Board Certificate (NEB) with CGPA 2.8
New Zealand	National Certificate of Educational Achievement (NCEA) Level 3: a minimum of 80 credits; 60 credits at Level 3 and 20 credits at Level 2
Nigeria	Satisfactory completion of one year post-secondary study at a recognised institution
Pakistan	Higher Secondary School Certificate (HSC) or Intermediate Certificate Examination in any stream with at least an average of 65%
Philippines	Satisfactory completion of one year post-secondary study at a recognised institution
Russia	Attestat o Srednem (polnom) Obshchem Obrazovanii (Certificate of Secondary (Complete) General Education)
Saudi Arabia	Tawjihiyah (General Secondary Education Certificate) with at least an overall average of 80%; OR completion of foundation program; OR one year higher education program study at a recognised institution
Singapore	Singapore-Cambridge GCE A-levels or GCE A-Levels with passing grades in three subjects
Sri Lanka	Sri Lankan A-levels or GCE A-levels with passing grades in three subjects
Taiwan	Senior High School Diploma or Senior Vocational School Diploma with an average of 70%
Thailand	Matayom (Certificate of Secondary Education) with average grade of 80
USA	High School Diploma with average grade of C
Vietnam	Bang Tot Nghiep Trung Hoc Pho Thong (Upper Secondary School Education Graduation Diploma) with an average score of 70%.

English Language Requirements

Applicants are required to meet the minimum English language requirements for entry to a Federation University course. They will need to provide evidence from one of the English test below to demonstrate their English language proficiency.

ENGLISH TESTS

The English test results must be valid prior to commencement date at Federation University at MIT.

Academic IELTS	TOEFL iBT	Pearson PTE	Cambridge CAE
Overall 6.5 (no band less than 6.0)	79-93 with minimums: Reading 13, Listening 12, Speaking 18, Writing 21	Overall 58 (no band less than 50)	Overall 176 (no band less than 169)
Overall 6.0 (no band less than 6.0)	60-78 with minimums: Reading 13, Listening 12, Speaking 18, Writing 21	Overall 50 (no band less than 50)	Overall 169 (no band less than 169)
Overall 5.5 (no band less than 5.5)	46-49 with minimums: Reading 8; Listening 7; Speaking 16; Writing 18	Overall 42 (no band less than 42)	Overall 162 (no band less than 162)

ENGLISH FOR ACADEMIC PREPARATION (EAP)

Successfully completing EAP at an appropriate level at MIT or another NEAS accredited institution may allow students to be eligible for direct entry into their course. Students who do not satisfy minimum English language requirements have the option to study the English Language Intensive Course for Overseas Students (ELICOS) at the MIT Centre of Learning.

The Centre offers ELICOS at different skill levels. Class levels are determined on the basis of the scores from one of the Independent English Language Test illustrated on the table above.

All English classes at MIT run from 9am- 1:30pm, Monday to Friday. 20 hours of face-to-face class time is scheduled each week. Students are expected to be actively involved in their individual learning process, co-operate in class activities, do all homework and be prepared to do additional independent study to ensure they reach the minimal English Language requirements.

ENGLISH LANGUAGE EXEMPTIONS

Federation University at MIT can also accept the following academic qualifications as meeting our general English language requirements. All qualifications must have been taken no more than two years prior to enrolment at Federation University.

IN AUSTRALIA	
QUALIFICATION	EQUIVALENT TO ACADEMIC IELTS 6.0 WITH NO BANDS LESS THAN 6.0
English Program from a Federation University recognised institution	Successful completion of English Language Intensive Course for Overseas Students (ELICOS)
English Australian Year 12 Secondary Schooling	Successful completion of Senior Secondary Certificate
English Australian TAFE or Higher Education provider	Successful completion of AQF Certificate IV or higher level

OTHER COUNTRIES

First language is English – Citizens and passport holder of one of the following countries:
Canada, Republic of Ireland, New Zealand, United Kingdom, United States of America

Students who have completed at least five years' study in one or more of the following countries:
Australia, Canada, New Zealand, South Africa, Republic of Ireland, United Kingdom, United States of America

Your Next Steps

At Federation University at MIT, we're committed to making the process as simple as possible. Applications are open year round, but apply as early as possible to ensure your place and enough time to get your student visa.

Whether you're applying directly or via an agent, just follow these simple steps:

1. COURSE

Select the course you wish to apply for. Before applying, ensure you meet the entry requirements. For undergraduate and postgraduate (coursework) courses visit mit.edu.au/feduni-mit/programs

2. APPLY

Depending on the course, there are two different application processes.

UNDERGRADUATE AND POSTGRADUATE (COURSEWORK)

Offshore international students must apply via an authorised agent of MIT. You can access authorised agent details at mit.edu.au/about-mit/contact-us/education-agents-your-country

Onshore international students can apply by the following methods:

- In person at MIT
- Via email to enquiries@mit.edu.au
- Via an authorised agent in Australia

3. ASSESSMENT

UNDERGRADUATE AND POSTGRADUATE (COURSEWORK)

Your application will be assessed against:

- English language requirements
- Academic entry requirements
- Pre-GTE Assessment

A complete application is normally assessed within five business days.

4. OFFER

If your application is successful, you will be sent an International Student Offer and Acceptance Pack that includes:

- Letter of Offer
- Information for accepting your offer
- GTE and/or financial assessment forms*

*Sometimes, international students will be required to complete a GTE assessment as a condition of their offer under the requirement of the Simplified Student Visa Framework (SSVF). The requirements will depend on a number of factors. Refer to federation.edu.au/SSVF for more information.

5. ACCEPT

Once you have provided all documentation and met all conditions, including passing SSVF Assessment, please pay the amount listed at "Total fee due in advance" ONLY after you have been advised by MIT Admissions staff to make the payment. A copy of the receipt should be forwarded to acceptance@mit.edu.au.

Once payment is confirmed, MIT will issue an electronic Confirmation of Enrolment (CoE). You will need your CoE to apply for your Australian student visa. More information on the visa application process is available at homeaffairs.gov.au.

6. ARRIVAL

Before you fly to Australia, download the Student Handbook which includes information about pre-arrival, accommodation, studying, living and working in Australia.

For Melbourne campus students: tinyurl.com/y7syghmx For Sydney campus students: tinyurl.com/yb6yhh9u

A week before Orientation, you will receive information about the compulsory International Student Orientation Program that is held one week before the trimester commences. Make sure we have your correct email recorded!

Important Information

Simplified Student Visa Framework (SSVF)

Under the Simplified Student Visa Framework, the University is required to ensure all prospective international students meet the Genuine Temporary Entrant criteria and have the financial capacity to pay for tuition and living costs for the study period in Australia.

The University reserves the right to apply a pre-visa screening process for all international applications. International students must pass our pre-visa screening process before accepting their offer and making payment to obtain a Confirmation of Enrolment (CoE) letter. Students will need the CoE from Federation University to apply for a student visa.

As per Department of Home Affairs requirements for a student visa application, students must provide:

- A detailed statement setting out their reasons for undertaking the intended course(s) at Federation University at MIT and explaining how they meet the genuine temporary entrant (GTE) criteria
- Evidence of sufficient funds to cover all expenses for the first 12 months of their stay in Australia
- Evidence of a genuine relationship between the applicant and any financial sponsor(s)
- A declaration that the applicant has access to sufficient funds and the applicant and the sponsor(s) have good financial capacity to meet course fees and living and travel costs to study in Australia.

Student visas

All overseas students are required to have an International Student Visa issued by the Australian Government.

Student visas are issued for full-time study on the understanding that the student completes their studies on campus, and has sufficient funds to cover tuition fees and living expenses while in Australia.

Students must comply with their visa conditions in order to retain their visa. You may be reported to the Department of Home Affairs and your visa may be cancelled if you do not comply with the conditions of your visa.

You can apply for your Student Visa from the Department of Home Affairs. For information regarding visas visit the Home Affairs website homeaffairs.gov.au

Overseas Student Health Cover (OSHC)

Students must have Overseas Student Health Cover (OSHC) before a student visa can be granted. The information for OSHC is included in your offer letter. MIT will purchase health cover on your behalf through Allianz Insurance. If you wish to purchase your OSHC through another provider please advise the International Admissions team of your membership details. Your OSHC must cover your whole student visa period, and you must not arrive in Australia before the OSHC start date.

A full list of fees and information regarding coverage and exclusion is available at oshcaustralia.com.au

Your rights and responsibilities

The Educational Services for Overseas Students (ESOS) Act regulates the Australian education and training sector's involvement with overseas students studying in Australia on student visas. To view the ESOS Framework, please visit internationaleducation.gov.au

Instructions

1. Please print your name as it appears in your Passport.
2. Please complete all sections with accurate information and print **BLOCK LETTERS** and tick boxes where required.
3. Ensure ALL required application documents on the [International Application Checklist](#) are provided with the application form.

SECTION 1: Personal Details

Title (Mr, Mrs, Miss, Other):	Gender:	Date of Birth:	/ /
Surname/Family name:			
Given Names:			
Your names printed above MUST match with your passport. If you have used a different name before, please provide your previously-used name below:			
Are you a current international student at Federation University Australia? <input type="checkbox"/> Yes, Student ID: <input type="checkbox"/> No			
Citizenship:	Country of Birth:	Passport Number:	
Marital Status:	<input type="checkbox"/> Single <input type="checkbox"/> Married	Date of Marriage:	/ / Is your Spouse in Australia? <input type="checkbox"/> Yes <input type="checkbox"/> No

SECTION 2: Contact Details

Personal Email:			
Home Phone:	Mobile:		
Permanent address in Home country:	City:		
	State/Province:	Country	Postcode:

SECTION 3: Australian Visa Details

Are you Currently in Australia? <input type="checkbox"/> Yes, more information as below <input type="checkbox"/> No, move to the next question			
Residential Address in Australia:			
Suburb/ Town/City:	State:	Postcode:	
Current Visa Type:	Expiry Date:	/ /	First Arrival Date: / /
Do you intend to apply for an Australian Student Visa?			<input type="checkbox"/> Yes <input type="checkbox"/> No
Have you ever been excluded from an Australian education institution before?			<input type="checkbox"/> Yes <input type="checkbox"/> No
If yes, please provide details:			
In Australia have you ever had a visa refused, cancelled or overstayed your visa?			<input type="checkbox"/> Yes <input type="checkbox"/> No
If yes, please the decision record or correspondence:			

SECTION 4: Program Selection

	Program Name	Teaching Location	Semester 1 Intake	Semester 2 Intake	Summer Semester (BRI, PP, ODL)	Year
1.			<input type="checkbox"/>	<input type="checkbox"/>	<input type="checkbox"/>	

SECTION 5: Academic Qualifications (Please list your most recent Qualification first)

Study Duration: (From MM/YYYY to MM/YYYY)	Name of Institution:	Program Name/ Qualification:	Country/Location:	Current Year Level/ Completed:

Study Duration: <small>(From MM/YYYY to MM/YYYY)</small>	Name of Institution:	Program Name/ Qualification:	Country/Location:	Current Year Level/ Completed:
Have you ever commenced or completed any <u>Vocational/Foundation/English</u> Study?				<input type="checkbox"/> Yes <input type="checkbox"/> No
If yes, please list all your study history below:				
Has it been more than 6 months since you last studied?				<input type="checkbox"/> Yes <input type="checkbox"/> No
If yes, please provide some information on what you have been doing as below:				
Do you have any relevant <u>Work Experience</u> that you would like to add for this application?				<input type="checkbox"/> Yes <input type="checkbox"/> No
If yes, please provide more information as below:				
SECTION 6: Credit/ Advanced Standing				
Are you applying for credit?				<input type="checkbox"/> Yes <input type="checkbox"/> No
If yes, please attach all required credit application documents as below: - Program structure - Course descriptions - Grading system for your academic transcripts				
SECTION 7: English Language Proficiency				
Have you completed an English Language Proficiency test?		<input type="checkbox"/> Yes (Go to SECTION 1)	<input type="checkbox"/> No (Go to SECTION 2)	
SECTION 1	English Test Type	Test Result	Test Date:	/ /
	<input type="checkbox"/> Academic IELTS <input type="checkbox"/> PTE Pearson * <input type="checkbox"/> TOEFL-iBT <input type="checkbox"/> Cambridge CAE <input type="checkbox"/> OET	Overall: Reading: Speaking: Listening: Writing:	Test Reference Number: Please provide a copy of test results for verification. <small>*If you have a PTE result, you also need to provide Federation University Australia the authority to verify your PTE result via the PTE online system.</small>	
Do you need to study an English pathway program to meet program English entry requirements?		<input type="checkbox"/> Yes <input type="checkbox"/> No <input type="checkbox"/> Unsure		
SECTION 2	<input type="checkbox"/> I am eligible for English waiver under Federation University Australia English exemption requirements. <input type="checkbox"/> I will take an English test on: <input type="checkbox"/> I am waiting for my English test result, will provide the result to the University on: / /			
Additional Questions				
Are you happy to ask the University to purchase Overseas Student Health Cover (OSHC) for you? OSHC type: Choose an item.				<input type="checkbox"/> Yes <input type="checkbox"/> No
If No, please specific who will arrange your OSHC: Choose an item.				
Do you understand the costs associated with studying in Australia? Please Visit https://www.studyinaustralia.gov.au/english/live-in-australia/living-costs for a guide to living costs and tuition fees.				<input type="checkbox"/> Yes <input type="checkbox"/> No
Have you done research about Federation University Australia via http://federation.edu.au/international/study-at-feduni/why-choose-feduni ?				<input type="checkbox"/> Yes <input type="checkbox"/> No
Have you visited or studied in Australia previously? (If yes, Please provide information as below)				<input type="checkbox"/> Yes <input type="checkbox"/> No
Have you breached any visa conditions? (If yes, Please provide information as below)				<input type="checkbox"/> Yes <input type="checkbox"/> No

Do you have any medical or health conditions or issues which may affect your studies, or prevent you from obtaining a student visa? (If yes, please provide more information about your condition and if you require additional support or advice from Federation University)				<input type="checkbox"/> Yes <input type="checkbox"/> No
Are you sponsored by the government in your home country? (If yes, who is your sponsor?)				<input type="checkbox"/> Yes <input type="checkbox"/> No
SECTION 8: Privacy Statement				
- The information being sought in this form is collected for the purposes of processing your application to the Federation University Australia. The information will be held by the University in accordance with its Information Privacy Policy and may be accessed and used by people employed or engaged by the University. - The provision of this information is voluntary, but if this information is not provided the University may be unable to process your application or provide services to you. - The information may be made available to government departments and agencies pursuant to the University's obligations under law including the Education Services for Overseas Students (ESOS) Act 2000. In addition, the information may be used or is closed to other organisations outside the University where permitted by relevant privacy legislation and in accordance with the University's Information Privacy Policy. - You have a right to access and correct your personal information in accordance with Privacy legislation and the University's Information Privacy Policy. Further information on the University's Information Privacy policy and procedures can be found on the University's Privacy web page. Please direct any enquiries you may have in relation to privacy to the University's Privacy Officer at privacyofficer@federation.edu.au or telephone +61 3 5327 9504.				
SECTION 9: Applicant Declaration				
1. I declare that the information submitted with this Application Form is true and complete. I further declare that any tertiary academic results submitted are a complete record of all results that I have obtained from every tertiary institution I have attended. 2. I acknowledge that failure to disclose my academic record may result in the University revoking an offer or terminating my studies at any stage. 3. I authorise the University to seek verification of my academic and professional qualifications and work experience. I understand that the University reserves the right to inform other tertiary institutions and regulatory agencies if any of the material presented to support my application is found to be false. 4. I understand that at the time of enrolment I will be required to supply originals of all documents used to support this application. 5. I acknowledge that the University reserves the right to alter any program, course, admission requirement or fee without prior notice. 6. I understand that the personal information I have provided may be released to government agencies as required by law. I further understand that it may be disclosed to third parties for the purpose of progressing my application. 7. I acknowledge that I have read and understand the description of program/s that I am applying for on the Federation University Australia website. 8. I authorise the University to access the Australian Immigration Visa Entitlements Verification Online (VEVO) system at any time to obtain information on my visa status. 9. I declare that my signature is true and correct and matches the signature in my passport.				
Applicant Name:		Signature:		Date: / /
SECTION 10: Agent Declaration				
Agent Name:		Branch/Country:		
Email Address:		Phone Number:		
1. I have a good understanding of the university's admissions requirements and procedures I have assessed the applicant accordingly. 2. I have made every effort to verify the authenticity and validity of the documents I am submitting on behalf of the applicant that support this application. 3. I have taken care to verify and provide accurate personal information pertaining to the applicant. 4. I confirm the applicant has agreed to submit this application via our office. The applicant has signed the application form. 5. I declared I will forward all correspondence as applicable to this application to the applicant. I understand, at times, the university will contact the applicant directly. 6. I understand if the applicant submits an application via another agent, I will not be notified by the university. It will be the responsibility of the student to notify me of their change of agent. The University has the right to accept the students change of agent request without my knowledge and can withdraw this application.				
Name of the Counsellor:		Signature:		Date: / /
**The University only accepts paper-based application forms under certain circumstances. Please complete your personal information and submit your application via the University's online application system. Please contact the International Admissions Office at Federation University Australia via internationaladmissions@federation.edu.au				



Key Dates 2020 and 2021

Application Deadline

Generally, the deadline for off-shore application is 6 weeks prior to program commencement. Prospective students are advised to apply as early as possible in order to allow sufficient time for application and visa processing by Australian authorities.hh

MIT MELBOURNE AND SYDNEY CAMPUS

Year	Trimester	Orientation	Start Date	End Date
2020	March	09* - 13 March 2020	16 March 2020	20 June 2020
	July	13 - 17 July 2020	20 July 2020	24 October 2020
	November	09 - 13 November 2020	16 November 2020	27 February 2021
2021	March	15 - 19 March 2021	22 March 2021	26 June 2021
	July	12 - 16 July 2021	19 July 2021	23 October 2021
	November	08 - 12 November 2021	15 November 2021	26 February 2022

*Monday, 9 March 2020 is Labour Day Public Holiday in Victoria. Orientation for MIT Melbourne campus falls on Tuesday, 10 March 2020.

OVERSEAS STUDENT HEALTH COVER (OSHC)

Service	Fee
Overseas Student Health Cover (OSHC)	Twelve months (Single) A\$518.42
	Twelve months (Dual) A\$3079.16
	Twelve months (Multi Family) A\$5329.24
	Twenty-four months (Single) A\$1053.50
	Twenty-four months (Dual) A\$6022.10
	Twenty-four months (Multi Family) A\$12,158.86
	Thirty-six months (Single) A\$1,655.22
	Thirty-six months (Dual) A\$9,129.68
	Thirty-six months (Multi Family) A\$19,134.50

OTHER CHARGES

Service	Fee	Frequency
Processing charge	A\$200	Once Off
Change of Program fee (Same Provider)	A\$100	Per Change of Program
Change of Program fee (Cross Provider)	A\$150	Per Change of Program
Accommodation placement fee (Melbourne)	A\$290	Per Placement
Accommodation placement fee (Sydney)	A\$260	Per Placement
Airport pick up (one way) Melbourne Tullamarine airport	A\$125	Per Pick up
Airport pick up (one way) Melbourne Avalon airport	Price on Application	Per Pick up
Airport pick up (one way) Sydney airport	A\$130	Per Pick up
Home stay, full board (three cooked meals) - Melbourne	A\$345	Per week
Home stay, full board (no meals) - Melbourne	A\$250	Per week
Home stay, full board (Breakfast only) - Sydney	A\$265	Per week
Home stay, full board (Two cooked meals) - Sydney	A\$290	Per week

Disclaimer: Dates, other charges and OSHC are subject to variation. Refer to mit.edu.au/feduni-mit/fees-and-charges for the most up-to-date information.

Further information

MIT Melbourne

288 La Trobe Street
Melbourne, Victoria, 3000, Australia
Phone: +61 3 8600 6700
Email: enquiries@mit.edu.au

mit.edu.au

MIT Sydney

154-158 Sussex Street
Sydney, NSW, 2000, Australia
Phone: +61 2 8267 1400
Email: info.sydney@mit.edu.au

mit.edu.au

Disclaimer: The information provided in this prospectus was correct at the time of publication, and is subject to change without notice. Please contact Melbourne Institute of Technology to confirm information. Published December 2019.

MIT CRICOS Provider No. 01545C (NAT), 03245K (NSW).
Federation University Australia CRICOS Provider No. 00103D