

Study guide  
2024



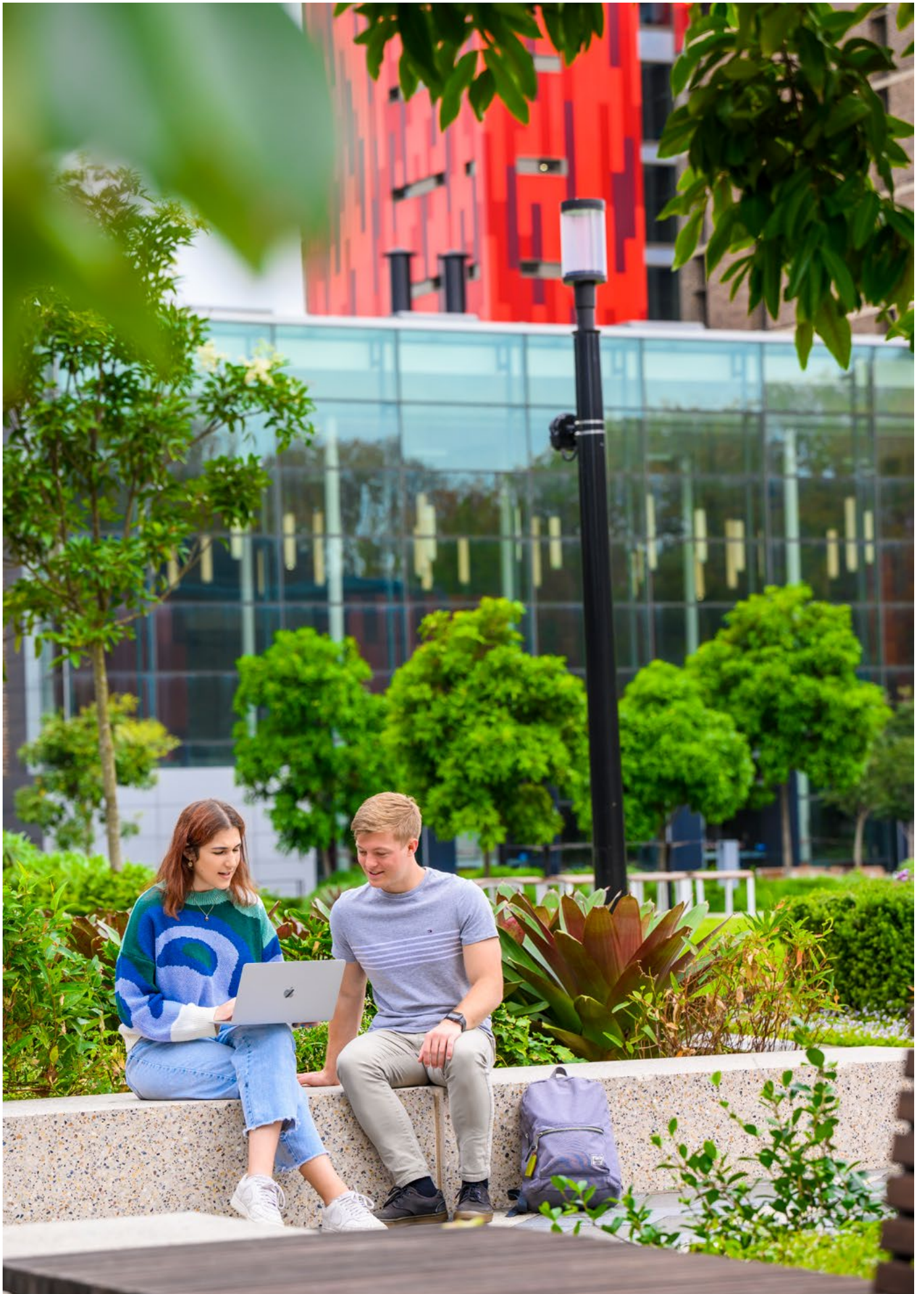
MACQUARIE  
University  
SYDNEY · AUSTRALIA

**YOU**

When your potential is multiplied  
by a university built for collaboration,  
anything can be achieved.

That's **YOU** to the power of *us*



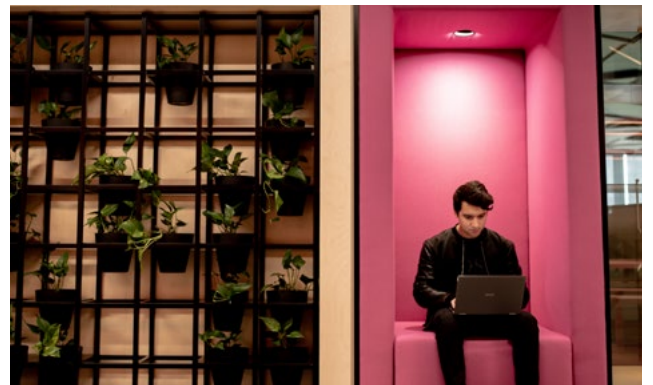




# Contents

---

MACQUARIE AT A GLANCE	5
COURSES MADE BY (YOU) <sup>US</sup>	6
LEARN THE LINGO	7
ENTRY PATHWAYS	8
ADJUSTMENT FACTORS	9
WHAT YOU CAN STUDY	10
OUR WALLUMATTAGAL CAMPUS	12
HOW TO APPLY	13
ASK US ANYTHING	14



**(YOU)<sup>us</sup>**

At Macquarie, we have discovered the human equation for success. By knocking down the walls between departments, and uniting the powerhouses of research and industry, human collaboration can flourish. This is the exponential power of our collective, where potential is multiplied by a campus and curriculum designed to foster collaboration for the benefit of everyone. Because we believe when we all work together, we multiply our ability to achieve remarkable things.

That's **YOU** to the power of *us*

# The exponential power of our collective

## MACQUARIE AT A GLANCE



### RANKED AMONG THE TOP 1%

of universities in the world  
(QS World University Rankings, 2022)



### MORE THAN 40,000 WORKPLACE EXPERIENCES

or community experiences through our PACE (Professional and Community Engagement) partnerships



### MORE THAN 4000 PARTNER ORGANISATIONS

across Australia and around the world, providing access to industry contacts that help develop valuable employability skills



### 190 PARTNER UNIVERSITIES FOR STUDENT EXCHANGE

in more than 40 countries



### MORE THAN 44,000 CONNECTED STUDENTS

from more than 129 countries



### 40+ SINGLE BACHELOR DEGREES

many of which are designed in consultation with industry



### 3 SUBJECTS

ranked in the top 50 globally and 11 in the top 100  
(QS World University Rankings by Subject, 2022)



### RANKED #1 IN SYDNEY

for graduate employment rate  
(QS Graduate Employability Rankings, 2022)



### AUSTRALIA'S FIRST FULLY INTEGRATED HEALTH PRECINCT

centred around our on-campus hospital and clinics



### ONLY UNIVERSITY IN AUSTRALIA

with its own metro station



### LOCATED IN SYDNEY'S LARGEST BUSINESS PRECINCT

only 15 kilometres from the Sydney CBD



### WALLUMATTAGAL CAMPUS

is set on 126 hectares of stunning parkland



### \$1 BILLION INVESTED TO CREATE A COLLABORATIVE CAMPUS

with world-class facilities and infrastructure



### 225,000 ALUMNI IN OUR INTERNATIONAL COMMUNITY

from more than 140 countries



### 10,000 GRADUATES REALISE THEIR POTENTIAL EACH YEAR

with sought-after degrees

# COURSES MADE BY (YOU)<sup>us</sup>

## EXTRAORDINARY CURRICULUM

Courses made by YOU to the power of us. It's our unique approach to learning inspired by the world of ever-increasing change. More flexible and better aligned to your needs, our curriculum will deliver a richer experience that will enable you to gain broader or more specialised knowledge in the areas that interest you and empower you to pursue the careers of tomorrow.

## TWO CHOICES ARE BETTER THAN ONE

You have the choice of undertaking one of more than 40 single bachelor degrees or one of our countless double bachelor degrees. With so many degrees and combinations to choose from, we're confident that you'll find a degree that excites and inspires you, and sets you up for an amazing future.

## DEGREES CO-DESIGNED BY INDUSTRY

The job market is evolving more rapidly than at any other time in recent history. So that our degrees equip you with the knowledge and skills that employers are looking for now and into the future, we design many of them in consultation with industry. Co-designed degrees offer a curriculum that is shaped by the latest industry trends and can be adjusted to respond to the needs of industry in real time. Having industry heavyweights involved in creating the fundamentals of your degree provides you with opportunities to contextualise your learning, gain the latest career and industry insights, and acquire the tools to address real-world problems.

That's the potential of courses made by (YOU)<sup>us</sup>.

## SINGLE BACHELOR DEGREES

Single bachelor degrees typically involve three or four years of full-time study in one specific area. While you'll have the flexibility to study units from a range of different areas, your degree ultimately focuses on one main area of study. We offer more than 40 single bachelor degrees, many of which are designed in consultation with industry.



## DOUBLE BACHELOR DEGREES

Double bachelor degrees allow you to undertake two degrees at the same time. They're an excellent choice if you have two distinct passions or career aspirations that combine two different fields. At Macquarie, we allow you to personalise your double degree by choosing the combination you consider will best kickstart your career.\* If you can't find a double degree you're interested in studying from our list of popular combinations, you can apply for what's known as the Bachelor of Combined Studies (UAC Code: 302000). When you select this degree via UAC, you'll be asked to choose your two degrees. At the completion of your studies, you'll graduate with both degrees.



## COMBINED BACHELOR + MASTER DEGREES

If you're interested in studying a security, intelligence and criminology degree, you have the opportunity to undertake a combined bachelor + master degree. These degrees provide you with a specialised depth of knowledge and can be completed in as little as four years.



\* Some double degree exclusions apply.



# Macquarie speak

## LEARN THE LINGO

### ATAR

The Australian Tertiary Admission Rank (ATAR) is a number between 00.00 and 99.95 that indicates your rank relative to all students in your age group (ie students aged 16 to 20 years), not your Year 12 group. The average ATAR is usually around 70.00.

### SELECTION RANK

The selection rank considers your ATAR or equivalent rank plus any adjustment factors you're eligible for. You can combine our adjustment factor schemes to receive additional points for most of our degrees.

### ADJUSTMENT FACTORS

Adjustment factors are additional points that may be used in combination with your ATAR to derive your selection rank. Adjustments don't change your ATAR, only your selection rank.

### UAC

The Universities Admissions Centre (UAC) receives and processes most applications for admission into university in New South Wales and the Australian Capital Territory.

### EARLY ENTRY

Macquarie offers four early entry schemes through which you can receive an early offer to a degree based on your Year 11 results. As long as you meet certain criteria – and you finish Year 12 – you'll receive an offer before you sit your final exams.

### GUARANTEED ENTRY

If you achieve a degree's published selection rank (ATAR + adjustment factors), you're guaranteed to receive an offer to study that degree at Macquarie, as long as you've listed it as your highest eligible preference with UAC.

### UNDERGRADUATE

An undergraduate student is one who is studying their first degree – known as a bachelor degree. Once you've been awarded your bachelor degree, you become a graduate.

### SINGLE BACHELOR DEGREE

This degree typically involves three or four years of full-time study in one specific area. While you'll have the flexibility to study units from a range of different areas, your degree ultimately focuses on one main area of study.

### DOUBLE BACHELOR DEGREE

A double bachelor degree involves studying two complementary or completely different degrees. A double degree increases your career flexibility and can be completed faster than two single degrees.

### MAJOR

A major is an area of study that you focus on within degrees, such as the Bachelor of Arts, the Bachelor of Commerce and the Bachelor of Science. You may be able to combine two different areas with a double major.

### UNIT

A unit is what we call a subject. Most full-time students take four units – each worth a fixed number of credit points – each session. Each unit usually requires about 12 hours of study each week.

### ELECTIVE

An elective forms part of a degree's flexible zone. Electives can be undertaken from within or outside your area of study, allowing you to personalise your degree by following your passions.

### SESSION

A session is just like a school term. We have two main sessions: Session 1 (February – June) and Session 2 (August – November).

### LECTURE

A lecture is where you'll learn most of your degree content. Lecture length varies from unit to unit, but most run for one or two hours. Some take place in large theatres, while others are in smaller rooms.

### TUTORIAL

A tutorial, or 'tute', generally includes 20–30 students and is an opportunity to ask your tutor questions and talk about the degree material with other students.

### CREDIT POINT

To graduate, you need to have completed the specified number of credit points for your degree. For many degrees, this is 240 credit points; however, some require the completion of a higher number of credit points.

### PREREQUISITE

A prerequisite is a school subject – such as HSC Mathematics – that must be completed, or a requirement that must be satisfied, before you can enrol in a particular unit.

### ASSUMED KNOWLEDGE

Some units assume that you have certain knowledge and skills from previous study, such as the HSC. Introductory units and bridging courses are available if you don't have the assumed knowledge.



# Tailor made for you

## ENTRY PATHWAYS

### UNIQUE ENTRY FOR A UNIQUE YOU

At Macquarie, we're all about success. We recognise that your ATAR doesn't necessarily reflect your achievements or potential, so through our range of entry pathways, we look at a variety of criteria. This includes your academic results in relevant HSC subjects, your involvement with your local community, your previous study or work experience – and everything in between. Whatever your personal circumstances, we believe in giving credit where credit's due, so we take everything into account.

### FIND YOUR PATHWAY

Our entry pathways treat you as an individual and recognise all the things that make you unique. To best help you follow your passion at Macquarie, we've created a simple entry pathways tool that allows you to compare all of our entry pathways to work out which ones suit you the best.

[mq.edu.au/study/admissions-and-entry/pathways](https://mq.edu.au/study/admissions-and-entry/pathways)

### Early entry schemes



#### MACQUARIE LEADERS AND ACHIEVERS

##### EARLY ENTRY SCHEME

The Macquarie Leaders and Achievers Early Entry Scheme considers your Year 11 academic performance alongside your extracurricular activities, casual work experience and community involvement to assess your eligibility for an early offer into a Macquarie degree.

[mq.edu.au/leaders-and-achievers](https://mq.edu.au/leaders-and-achievers)

##### SCHOOLS RECOMMENDATION SCHEME

The Schools Recommendation Scheme (SRS) allows your school to recommend you for an early university offer. We'll look at your Year 11 academic achievements as well as your school's rating of your aptitude and learning ability. If you meet the criteria, we'll make you an early offer.

[mq.edu.au/srs](https://mq.edu.au/srs)

##### GIFTED AND TALENTED ENTRY PROGRAM

If you're a high-achieving student, you can participate in the Gifted and Talented Entry Program, which allows you to enrol at Macquarie while you're still at high school. If you successfully complete your unit/s with the necessary marks, you could receive an early offer into a Macquarie degree.

[mq.edu.au/gifted-and-talented](https://mq.edu.au/gifted-and-talented)

##### ABORIGINAL AND TORRES STRAIT ISLANDER ENTRY PATHWAY

This admissions pathway provides opportunities for Aboriginal and/or Torres Strait Islander students to study undergraduate degrees at Macquarie.

[mq.edu.au/walanga-muru-pathway](https://mq.edu.au/walanga-muru-pathway)

### Entry programs



#### ACADEMIC ENTRY PROGRAM

Our Academic Entry Program matches your strengths to our world-class degrees. Rather than considering only your selection rank, we review your results for the HSC subjects that correspond to select Macquarie degrees and make an offer based on your performance in these subjects.

[mq.edu.au/academic-entry](https://mq.edu.au/academic-entry)

#### GUARANTEED ENTRY

If you achieve a degree's published selection rank (ATAR + adjustment factors), you're guaranteed to receive an offer to study that degree at Macquarie, as long as you've listed it as your highest eligible preference with UAC.

[mq.edu.au/guaranteed-entry](https://mq.edu.au/guaranteed-entry)

### College courses



#### MACQUARIE UNIVERSITY COLLEGE

If you've completed a Year 11 or Year 12 equivalent – or you've completed the HSC, interstate Year 12 examination or the International Baccalaureate (IB) – and you haven't met the entry requirements for a bachelor degree, our pathway courses will provide you with the academic support you'll need to reach university-level study. When you successfully complete your course and meet the entry requirements, you'll seamlessly transition into the first or second year of your chosen bachelor degree.

[mq.edu.au/college](https://mq.edu.au/college)

Find out more  
[mq.edu.au/study/admissions-and-entry/pathways](https://mq.edu.au/study/admissions-and-entry/pathways)





# A reward for being you

## ADJUSTMENT FACTORS

### BOOST YOUR SELECTION RANK

If you've completed the HSC, interstate Year 12 examinations or the International Baccalaureate (IB) and included Macquarie in your preferences, you may be eligible to receive adjustments – additional points that can be added to your ATAR or equivalent admissions rank to boost your selection rank. For many of our degrees, you can combine our adjustment factor schemes and receive up to 15 additional points.

### Achievement-based adjustments



#### ACADEMIC ADVANTAGE SCHEME

If you've already put in the hard yards on subjects that relate to Macquarie degrees, you could get up to three additional points for each one, with a maximum of six points available.

#### BIG HISTORY SCHEME

If you complete our Big History: Connecting Knowledge MOOC (massive open online course), you may be eligible to earn three additional points.

#### ELITE ATHLETES AND ARTISTIC PERFORMERS SCHEME

If competitive commitments, such as training and performing, have affected your study preparation or HSC, you may be eligible to receive four additional points.

#### DUKE OF EDINBURGH'S, QUEEN'S SCOUT AND QUEEN'S GUIDE AWARDS SCHEMES

If you've completed the Duke of Edinburgh's, the Queen's Scout or the Queen's Guide awards, you may be eligible to receive up to three additional points.

### Location-based adjustments



#### REGIONAL ENTRY SCHEME

If you're from regional or remote Australia and don't have access to the same resources as students in cities and larger towns, you could receive up to nine additional points.

#### MACQUARIE CATCHMENT SCHEME

If you live in Macquarie's catchment region, you may be eligible to receive five additional points.

### Equity-based adjustments



#### EDUCATIONAL ACCESS SCHEME

If you've demonstrated a commitment to your studies but you've been affected by circumstances beyond your control, you could receive up to five additional points.



# Set your career in motion

## WHAT YOU CAN STUDY

### You like

<ul style="list-style-type: none"> <li>• Community and family studies</li> <li>• English</li> <li>• History or geography</li> <li>• Languages</li> <li>• Society and culture</li> <li>• Studies of religion</li> </ul>	<ul style="list-style-type: none"> <li>• Business studies</li> <li>• Economics</li> <li>• Languages</li> <li>• Mathematics</li> <li>• Society and culture</li> </ul>	<ul style="list-style-type: none"> <li>• Business studies</li> <li>• Economics</li> <li>• English</li> <li>• History or geography</li> <li>• Languages</li> <li>• Mathematics</li> <li>• Science</li> </ul>	<ul style="list-style-type: none"> <li>• Engineering studies</li> <li>• Industrial technology</li> <li>• Mathematics</li> <li>• Physics</li> <li>• Science</li> </ul>	<ul style="list-style-type: none"> <li>• Information processes and technology</li> <li>• Mathematics</li> <li>• Physics</li> <li>• Software design and development</li> </ul>	<ul style="list-style-type: none"> <li>• Business studies</li> <li>• Economics</li> <li>• English</li> <li>• History</li> <li>• Languages</li> <li>• Society and culture</li> </ul>
--	--	---	---	---	---

### You could study

ARTS AND SOCIAL SCIENCES	BUSINESS	EDUCATION	ENGINEERING	INFORMATION TECHNOLOGIES	LANGUAGES AND LINGUISTICS
<ul style="list-style-type: none"> <li>• B Arts</li> <li>• B Ancient History</li> <li>• B Archaeology</li> <li>• B International Studies</li> <li>• B Planning</li> <li>• B Social Science</li> </ul>	<ul style="list-style-type: none"> <li>• B Actuarial Studies</li> <li>• B Actuarial Studies with Professional Practice (Honours)</li> <li>• B Applied Finance</li> <li>• B Business</li> <li>• B Business Analytics</li> <li>• B Commerce</li> <li>• B Economics</li> <li>• B Marketing and Media</li> <li>• B Professional Accounting</li> </ul>	<ul style="list-style-type: none"> <li>• B Teaching (Early Childhood Education)</li> <li>• B Arts and B Education (Primary) majoring in Early Childhood Teaching</li> <li>• B Arts and B Education (Primary)</li> <li>• B Education (Primary) and B Psychology</li> <li>• B Arts and B Education (Secondary)</li> <li>• B Commerce and B Education (Secondary)</li> <li>• B Science and B Education (Secondary)</li> </ul>	<ul style="list-style-type: none"> <li>• B Engineering (Honours) in Civil Engineering</li> <li>• B Engineering (Honours) in Electrical and Electronic Engineering</li> <li>• B Engineering (Honours) in Mechanical Engineering</li> <li>• B Engineering (Honours) in Mechatronic Engineering</li> <li>• B Engineering (Honours) in Software Engineering</li> </ul>	<ul style="list-style-type: none"> <li>• B Cyber Security</li> <li>• B Game Design and Development</li> <li>• B Information Technology</li> </ul>	<ul style="list-style-type: none"> <li>• B Arts</li> <li>• B International Studies</li> <li>• Diploma of Languages</li> </ul>

### You could be

<ul style="list-style-type: none"> <li>• Archaeologist</li> <li>• Arts manager</li> <li>• Cultural adviser</li> <li>• International business manager</li> <li>• Museum curator</li> <li>• Policy analyst</li> <li>• Social researcher</li> <li>• Translator or interpreter</li> <li>• Urban planner</li> </ul>	<ul style="list-style-type: none"> <li>• Accountant</li> <li>• Actuarial analyst</li> <li>• Data analyst</li> <li>• Economist</li> <li>• Entrepreneur</li> <li>• Financial analyst</li> <li>• Human resources representative or recruiter</li> <li>• Marketing specialist</li> </ul>	<ul style="list-style-type: none"> <li>• Early childhood teacher</li> <li>• Educational researcher</li> <li>• Primary or secondary teacher</li> <li>• Special education teacher</li> </ul>	<ul style="list-style-type: none"> <li>• Engineer</li> <li>• Entrepreneur</li> <li>• Product manager or developer</li> <li>• Project manager</li> <li>• Systems engineer</li> </ul>	<ul style="list-style-type: none"> <li>• Cloud architect</li> <li>• Cybersecurity manager</li> <li>• Data scientist</li> <li>• Games designer</li> <li>• Software designer</li> <li>• User-experience designer</li> <li>• Web developer</li> </ul>	<ul style="list-style-type: none"> <li>• Content editor</li> <li>• Digital copywriter</li> <li>• International business manager</li> <li>• Social researcher</li> <li>• Tourism and travel consultant</li> <li>• Transnational communications officer</li> <li>• Translator or interpreter</li> </ul>
--	--	--	---	--	---



## TWO CHOICES ARE BETTER THAN ONE

Undertake one of our single bachelor degrees or a double bachelor degree.

<ul style="list-style-type: none"> <li>• Community and family studies</li> <li>• English</li> <li>• History</li> <li>• Legal studies</li> <li>• Science</li> <li>• Society and culture</li> <li>• Studies of religion</li> </ul>	<ul style="list-style-type: none"> <li>• Dance</li> <li>• Design and technology</li> <li>• Drama or music</li> <li>• English</li> <li>• Languages</li> <li>• Society and culture</li> <li>• Visual arts</li> </ul>	<ul style="list-style-type: none"> <li>• Biology, chemistry or physics</li> <li>• English</li> <li>• Mathematics</li> <li>• PDHPE</li> <li>• Society and culture</li> </ul>	<ul style="list-style-type: none"> <li>• Community and family studies</li> <li>• English</li> <li>• Mathematics</li> <li>• Science</li> <li>• Society and culture</li> </ul>	<ul style="list-style-type: none"> <li>• Biology, chemistry, mathematics or physics</li> <li>• Design or industrial technology</li> <li>• Earth and environmental science</li> <li>• Information processes and technology</li> </ul>	<ul style="list-style-type: none"> <li>• Community and family studies</li> <li>• English</li> <li>• History</li> <li>• Languages</li> <li>• Legal studies</li> <li>• Society and culture</li> <li>• Studies of religion</li> </ul>
--	--	---	--	--	--

<p><b>LAW</b></p> <ul style="list-style-type: none"> <li>• B Laws</li> </ul>	<p><b>MEDIA, COMMUNICATIONS AND CREATIVE ARTS</b></p> <ul style="list-style-type: none"> <li>• B Marketing and Media</li> <li>• B Media and Communications</li> <li>• B Music</li> <li>• B Arts</li> </ul>	<p><b>MEDICINE AND HEALTH</b></p> <ul style="list-style-type: none"> <li>• B Chiropractic Science</li> <li>• B Clinical Science</li> <li>• B Exercise and Sports Science</li> <li>• B Medical Sciences</li> <li>• B Speech and Hearing Sciences</li> </ul>	<p><b>PSYCHOLOGY AND COGNITIVE SCIENCE</b></p> <ul style="list-style-type: none"> <li>• B Cognitive and Brain Sciences</li> <li>• B Psychology (Honours)</li> <li>• B Psychology</li> </ul>	<p><b>SCIENCE</b></p> <ul style="list-style-type: none"> <li>• B Biodiversity and Conservation</li> <li>• B Environment</li> <li>• B Science</li> </ul>	<p><b>SECURITY, INTELLIGENCE AND CRIMINOLOGY</b></p> <ul style="list-style-type: none"> <li>• B Cyber Security</li> <li>• B Security Studies</li> <li>• B Security Studies and M Counter Terrorism</li> <li>• B Security Studies and M Criminology</li> <li>• B Security Studies and M Cyber Security Analysis</li> <li>• B Security Studies and M Intelligence</li> <li>• B Security Studies and M Security and Strategic Studies</li> </ul>
--	--	--	---	---	---

<ul style="list-style-type: none"> <li>• Barrister or solicitor</li> <li>• Diplomat</li> <li>• Government policy adviser</li> <li>• In-house counsel</li> <li>• Management consultant</li> <li>• Public interest advocate</li> </ul>	<ul style="list-style-type: none"> <li>• Advertising specialist</li> <li>• Digital content creator</li> <li>• Film, music, radio or TV producer</li> <li>• Journalist</li> <li>• Marketing or PR specialist</li> <li>• Video game designer</li> </ul>	<ul style="list-style-type: none"> <li>• Audiologist</li> <li>• Chiropractor</li> <li>• Doctor</li> <li>• Exercise scientist</li> <li>• Medical researcher</li> <li>• Physiotherapist</li> <li>• Speech pathologist</li> </ul>	<ul style="list-style-type: none"> <li>• Data scientist</li> <li>• Employment counsellor</li> <li>• Executive coach</li> <li>• Psychologist</li> <li>• Research administrator</li> <li>• Researcher</li> <li>• Science communicator</li> </ul>	<ul style="list-style-type: none"> <li>• Astronomer or astrophysicist</li> <li>• Biologist or chemist</li> <li>• Biotechnologist</li> <li>• Ecologist or earth scientist</li> <li>• Mathematician or physicist</li> <li>• Zoologist</li> </ul>	<ul style="list-style-type: none"> <li>• Criminologist</li> <li>• Defence officer</li> <li>• Federal, state or territory police officer</li> <li>• Intelligence officer</li> <li>• Risk analyst</li> <li>• Security analyst</li> </ul>
--	---	--	--	--	--





# Dynamic and built for collaboration

## OUR WALLUMATTAGAL CAMPUS

### GET INVOLVED

Student life isn't all about classrooms and exams. It's also about making new friends, enjoying new experiences and learning about different cultures. With more than 140 student groups and sport clubs, Macquarie offers ample opportunity to meet new people, experience other cultures, test ideas and develop personal skills – communication and teamwork, for example.

### LOOK AFTER YOUR PHYSICAL WELLBEING

The Macquarie University Sport and Aquatic Centre is conveniently located on campus. The centre offers flexible and student-friendly membership options, so you can gain access to the best university facilities in Australia. These include a state-of-the-art health club/gym with smart technology equipment; heated 50-metre outdoor and 25-metre indoor swimming pools; group fitness studios; indoor and outdoor courts for basketball, badminton, squash and more; and dedicated spaces for martial arts and gymnastics. We also offer social and competitive sport for everyone.

### FEED YOUR BRAIN AND YOUR BODY

When you're a busy uni student, you need to have the right fuel to optimise your study, work and play. With this in mind, we offer a range of on-campus food options that will keep your mind alert and your body nourished. With tasty options from all corners of the globe, you'll be spoiled for choice when it comes to delicious food. And if you've got a craving for something that's not available on campus, you're only a short walk away from the nearby shopping centre.

### WORLD-LEADING FACILITIES

More than \$1 billion has been invested in recent years in our facilities and infrastructure, so you can thrive in an environment that's inspiring and switched on to the latest digital technologies. If you're undertaking a health, medical or psychology degree, you could be studying alongside experts from MQ Health and Cochlear, or within our Simulation Hub. Cybercrime more your thing? You may have opportunities to learn from academics and industry professionals within the Macquarie University Cyber Security Hub. For media students, there's our digital newsroom, and science and IT students have access to some of the best labs in Asia-Pacific. And, regardless of which degree you undertake, if you have an entrepreneurial spirit, you'll find inspiration and support in our incubator.

### LIVE ON CAMPUS

The Central Courtyard Accommodation is located in the heart of the campus, so you can get to your classes in just a few minutes. Apartments contain six, four or twin bedrooms with shared living spaces and a premium kitchen. One-bedroom and studio apartments are also available. As a resident, you have exclusive access to study spaces, common rooms, game facilities and outdoor terraces. Utilities and wi-fi expenses are included in your rent, and our on-site accommodation team and residential advisers are available 24/7. The Central Courtyard Accommodation is the only residential accommodation managed and operated by the University. Other accommodation options include Dunmore Lang College, Robert Menzies College, Morling Residential College, Macquarie University Village and homestay.

### TRAVEL YOUR WAY

Whether you prefer to travel by train, bus, car or bike, getting to Macquarie is easy.



# What are you waiting for?

## HOW TO APPLY

Applying for a uni degree is a big step, and it can seem a little overwhelming at times. We get this, so we've taken all the tricky stuff and distilled it into seven easy steps. So that when it comes time for you to apply to uni, you've got all the information you need.

### 1. EXPLORE

#### Attend our events

- Attend one or several of our on-campus events
- Jump online and watch an info session or webinar

### 2. SELECT

#### Consider the degree you'd like to study

- Check out potential careers and degrees on pages 10–11
- Visit [courses.mq.edu.au](https://courses.mq.edu.au)

### 3. REVIEW

#### Review your eligibility for our entry schemes and adjustment factors

- Check out pages 8–9 for more information

### 4. APPLY

#### Apply for early entry schemes

- Visit [mq.edu.au/leaders-and-achievers](https://mq.edu.au/leaders-and-achievers), [mq.edu.au/srs](https://mq.edu.au/srs), [mq.edu.au/gifted-and-talented](https://mq.edu.au/gifted-and-talented) and [mq.edu.au/walanga-muru-pathway](https://mq.edu.au/walanga-muru-pathway) for more information

### 5. APPLY

#### Apply for your chosen degree through UAC

- Visit [uac.edu.au](https://uac.edu.au) for more information

### 6. OFFER

#### If you receive an offer

- Congratulations and welcome to Macquarie. You'll need to accept your offer at [mq.edu.au/ug-secure](https://mq.edu.au/ug-secure) and complete your enrolment online

### 7. PATHWAYS

#### If you don't receive an offer

- If you're not accepted into your dream degree, consider undertaking a Macquarie University College course. Visit [mq.edu.au/college](https://mq.edu.au/college) for more information

# Questions?

## ASK US ANYTHING

---

### CALL US

**T:** (02) 9850 6767

### ONE-ON-ONE CONSULTATIONS

To book a one-on-one consultation, visit

**[mq.edu.au/personal-consultations-booking](https://mq.edu.au/personal-consultations-booking)**

### ONLINE LIVE CHAT

Chat to us live by clicking on the chat icon on any degree page

### BOOK A CAMPUS TOUR

**[mq.edu.au/campus-tours](https://mq.edu.au/campus-tours)**

### EVENTS

To find out about our upcoming events, visit

**[mq.edu.au/study/events](https://mq.edu.au/study/events)**

### HOURS

Monday – Friday

9am – 5pm

### EMAIL

**E:** [futurestudents@mq.edu.au](mailto:futurestudents@mq.edu.au)

### WEB

**[mq.edu.au](https://mq.edu.au)**

**PHOTOS:** Morris McLennan, Adam Scarf, Chris Stacey, Joanne Stephan, Jesse Taylor

This document has been prepared by Group Marketing, Macquarie University. The information in this document is intended for Australian or New Zealand citizens, permanent residents of Australia and holders of an Australian permanent resident humanitarian visa. It is correct as at the date of publication, but the University reserves the right to vary or withdraw any general information, course(s) and/or unit(s), fees, and/or the mode or time of offering its course(s) and unit(s) without notice. Prospective students are advised to check whether there has been any variation or withdrawal affecting any course(s) in which they wish to enrol with Future Students at [futurestudents@mq.edu.au](mailto:futurestudents@mq.edu.au) or (02) 9850 6767 before proceeding.



CRICOS Provider 00002J  
FTS3572  
ABN 90 952 801 237







**MACQUARIE**  
University  
SYDNEY · AUSTRALIA

# (OPEN DAY)<sup>US</sup>

12 AUGUST 2023

[openday.mq.edu.au](https://openday.mq.edu.au)



**Questions?**  
**Ask us anything ...**

Macquarie University  
Wallumattagal Campus  
Macquarie Park NSW 2109  
**T:** (02) 9850 6767  
**E:** [futurestudents@mq.edu.au](mailto:futurestudents@mq.edu.au)  
**mq.edu.au**

