



THE UNIVERSITY OF  
MELBOURNE

Information for  
students outside  
of Australia

# Discover Melbourne in 2025



# University of Melbourne at a glance



## #1 in Australia<sup>1 2 3</sup>

Meet the needs of the world's rapidly evolving workplace with a strengthened ability to think critically and creatively across disciplines.



## #14 in the world<sup>4</sup>

The University of Melbourne is the highest ranked Australian university in the QS World University ranking.



## 98% of graduates in work<sup>5</sup>

We are internationally recognised for graduate employability with unparalleled industry-integrated learning and networking opportunities to set you up for success.



## Flexible and focused degrees

Select majors, electives and breadth subjects that focus on your chosen career from day one. Or, take your time to explore a range of subjects before deciding.



## Unprecedented choice

Our 19 graduate schools offer over 400 courses, providing boundless scope to you to pursue your passion and develop your career.



## Your city

Study in the world's third most liveable city<sup>6</sup>, fifth best student city and top city in Australia<sup>7</sup>



## Melbourne Peer Mentor Program (MPMP)

As a new undergraduate student, you will be matched with a current student from your faculty to receive advice and guidance in navigating uni life.



## Your teachers

Learn from expert academics who are changing the world one project at a time. Be inspired by your lecturers, tutors and mentors. Leave prepared for your career.



## Your Networks

We have over 160 nationalities represented on campus, and our graduates join an international network of over 400,000 alumni.



## Your career

We're ranked higher for graduate employability than some of the world's top universities, including, Cambridge, Berkeley and the University of Hong Kong.<sup>4</sup>



## Support

The University of Melbourne offers one of the most comprehensive student support network in Australia: [services.unimelb.edu.au/finder](https://services.unimelb.edu.au/finder)

Connect with our services through Stop 1<sup>6</sup> – you can always come to us for support and advice.



## Scholarships

Melbourne has a wide range of scholarship programs. Find one that suits you: [scholarships.unimelb.edu.au](https://scholarships.unimelb.edu.au)

<sup>1</sup> Academic Ranking of World Universities 2022

<sup>2</sup> Times Higher Education World University Rankings 2023

<sup>3</sup> QS World University Rankings 2024

<sup>4</sup> QS Graduate Employability Rankings 2022

<sup>5</sup> Economist Intelligence Unit's annual Global Liveability Index 2023

<sup>6</sup> [students.unimelb.edu.au/student-support/advice-and-help/stop-1](https://students.unimelb.edu.au/student-support/advice-and-help/stop-1)

<sup>7</sup> QS Best Student Cities 2023

The majority of our disciplines are highly ranked. Below is an example of just a few.



**#1 in Australia**  
**#19 in the world**  
for Psychology



**#1 in Australia**  
**#35 in the world**  
for Modern Languages



**#1 in Australia**  
**#11 in the world**  
for Law and Legal Studies



**#1 in Australia**  
**#23 in the world**  
for Architecture and Built  
Environment



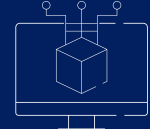
**#3 in Australia**  
**#40 in the world**  
for Economics and  
Econometrics



**#1 in Australia**  
**#37 in the world**  
for Business and  
Management



**#1 in Australia**  
**#38 in the world**  
for Biological Science



**#1 in Australia**  
**#41 in the world**  
for Computer Science and  
Information Systems



**#1 in Australia**  
**#20 in the world**  
for Life  
Sciences and Medicine



**#1 in Australia**  
**#26 in the world**  
for Linguistics



**#1 in Australia**  
**#12 in the world**  
for Education and Training



**#2 in Australia**  
**#17 in the world**  
for Geography



**#2 in Australia**  
**#28 in the world**  
for English Language and  
Literature



**#2 in Australia**  
**#15 in the world**  
for Development Studies



**#2 in Australia**  
**#23 in the world** for  
Accounting and Finance



**#2 in Australia**  
**#21 in the world** for  
Environmental Studies

# Your city

## The city of Melbourne

Located in the state of Victoria on the southeast coast of Australia, Melbourne is the state's cultural and business centre with a population of over 5 million people.

Melbourne has been recognised as Australia's best student city and consistently ranked as one of the most liveable cities in the world. Melbourne is a safe, vibrant multicultural hub with annual festivals celebrating art, food, music, comedy and sport.

The University is in the inner city, connected by great public transport, bike paths and near the Queen Victoria Market where you can buy fresh fruit, vegetables, seafood and meat.

Explore the city's famous cobblestone lanes, go to a music festival, take in a world-class theatre production, or watch an Aussie Rules football match.

## The state of Victoria

Beyond the city of Melbourne, students can enjoy all that the state of Victoria has to offer: stunning beaches, wineries, bushwalking and farm-to-table food, and is accessible by train, bus or car.

Enjoy drives along the scenic Great Ocean Road, learn to ski at alpine resorts, discover the north-east art silo trail, or see the penguins at Phillip Island.



Travel from our Parkville campus to the CBD in 15 minutes by tram



Live in a city with more cafes and restaurants per number of residents than any other city in the world



Over 3000 live music performances weekly



State capital of Victoria



Sporting and cultural capital of Australia



Melbourne has been voted Best Student city in Australia and fifth in the world<sup>1</sup>



Find out more about life at Melbourne



Darwin



Kakadu National Park



The Kimberleys



Daintree Rainforest



Great Barrier Reef



Uluru



Brisbane



Byron Bay

Nullarbor

Great Australian Bight



Blue Mountains



Sydney



Canberra



Adelaide



Kangaroo Island



Art Silo Trail



Melbourne



Vic Alpine Resorts



Great Ocean Road

Phillip Island



Cradle Mountain



Hobart

Tasmania

# Your campus

Around 49 per cent of Australians are either first or second-generation migrants, and of those born overseas, there are more from neighbouring Asian countries than those born in Europe.

The University of Melbourne reflects this diversity in student numbers on our eight campuses in Melbourne and Victoria.

## Melbourne

**Parkville campus** has a mix of historic sandstone buildings and state of the art facilities, with cafes, 12 libraries, gyms, specialty stores and a seasonal farmers' market. Located north of the city centre within a renowned knowledge precinct of eight hospitals, leading research institutes and a wide range of knowledge-based industries. A new Student Precinct on campus has opened for students, staff and the wider community to engage, learn and grow.

**Southbank campus** is purpose-built for the creative arts with sound and dance stages, animation studios, cinemas and visual arts studios. Situated in the city's lively arts precinct with the National Gallery of Victoria, Melbourne Theatre Company, Melbourne Recital Centre, the Australian Ballet, the Arts Centre and the Australian Centre for Contemporary Art.

**Burnley campus** is dedicated to environmental and ornamental horticulture, with nine hectares of heritage-listed gardens.

**Fishermans Bend campus**, opening in 2026, will be a centre for large experimental research, hands-on learning and industry colocation.

## Regional Victoria

**Creswick** is Australia's only dedicated forest ecosystem science campus, focusing on conservation, forest industry and molecular biology research.

**Dookie campus** is a focal point for key research, teaching and technology development, helping to shape the future of agriculture in Australia and beyond.

**Shepparton Medical Centre campus** specialises in rural health and clinical education.

**Werribee campus** is a hub for teaching and research with advanced veterinary facilities and on-site placements.

## Take a virtual tour of our campus

Curious about our campuses? Choose your own adventure on this self-guided, virtual tour.

[study.unimelb.edu.au/student-life/campus-and-facilities](https://study.unimelb.edu.au/student-life/campus-and-facilities)

← Burnley campus  
6km

↓ Dookie campus  
212km

*The University of Melbourne acknowledges the Traditional Owners of the unceded land on which we work, learn and live: the Wurundjeri Woi Wurrung and Bunurong peoples (Burnley, Fishermans Bend, Parkville, Southbank and Werribee campuses), the Yorta Yorta Nation (Dookie and Shepparton campuses), and the Dja Dja Wurrung people (Creswick campus).*

Take a virtual tour of our campuses



Werribee campus 30km →

Fishermans Bend 10km →

Creswick campus 124km →

↓ Southbank campus

↓ Central Business District

↓ Parkville campus

↓ Melbourne Biomedical District

↓ Shepparton campus 190km

# Your home

To find out  
more scan  
this QR code



Live in the heart of Melbourne. The University of Melbourne provides an accommodation offer for all commencing students who are new to Melbourne and apply for university accommodation, subject to availability. <sup>1</sup>

Choose from shared apartments, self-contained studios, dormitory-style living, residential colleges, homestay and private rental options.

## University accommodation

Within walking distance of our Parkville campus, with year-round social, academic, wellbeing and sporting activities and a team of professional staff at each site to ease your transition into university life.

**Little Hall** - offering a modern take on a college experience with a first-rate academic enrichment program

**Lisa Belleair House** – surrounded by parklands on the northern edge of our Parkville campus

**The Lofts** - modern apartment on-campus living exclusively for graduate students.

To find out more visit:

[study.unimelb.edu.au/accommodation](http://study.unimelb.edu.au/accommodation)

## Residential colleges

There are ten residential colleges ranging in size from 70–400 students. Two of these colleges, **International House** and **Medley Hall**, are owned and operated by the University. All colleges provide weekly tutorials to support your learning from residential tutors on site. Meals are provided and there are social clubs, cultural, sporting and leadership

programs. Scholarships worth \$7.5 million are available to support students across the colleges each year. Explore our ten Colleges :

- International House
- Janet Clarke Hall
- Medley Hall
- Newman College
- Ormond College
- Queen's College
- St Hilda's College
- St Mary's College
- Trinity College
- University College

To find out more visit:

[colleges.unimelb.edu.au](http://colleges.unimelb.edu.au)

## Other options

### Partner accommodation

We have collaborated with some nationally recognised student accommodation providers to create more accommodation options around our campus. **UniLodge Lincoln House** offers modern dormitory-style living with impeccably designed shared facilities overlooking the city. **Student Village Melbourne** have furnished bedrooms with ample workspaces and access to village facilities designed specifically for students.

### Graduate House

Offers flexible stays, from one night, a semester or a few years depending on your needs.

[graduatehouse.com.au](http://graduatehouse.com.au)

## Off-campus housing

If you are ready to embrace total independence, you might be interested in renting privately. Our **Off-Campus Housing Network** is an online resource designed to help you find housemates or rooms to rent and is exclusively for University of Melbourne students. Our Student Accommodation team can provide you with resources and information regarding homestays, hostels and private rentals.

[housing.unimelb.edu.au](http://housing.unimelb.edu.au)

## Your living costs

Melbourne offers many lifestyle options to fit many budgets. Living in the inner suburbs means you can walk or cycle to uni. Some students pay less rent by living further out, in which case they pay more for public transport or a car.

Savings can be made by sharing accommodation, shopping at Melbourne's Queen Victoria and South Melbourne markets, using our libraries and student-owned co-ops, and attending free events on campus.

There are also a range of scholarship options available for students to support their stay in University of Melbourne accommodation.

Visit [scholarships.unimelb.edu.au](http://scholarships.unimelb.edu.au) to view our full range of scholarships.

<sup>1</sup> Conditions apply



*"University Accommodation provides the perfect environment to transition into a university lifestyle with the benefits of independent living alongside genuine support from peers and staff"*

Hannah, Little Hall resident



# Your living costs

To see current residential fees scan this QR code (see example below)











## Accommodation features

To make the most of your time in Melbourne, it's important to know upfront the average cost of living here.

How much it costs to live in Melbourne will depend on your individual circumstances. The table below provides an overview of accommodation features for a student at the Parkville campus of the University of Melbourne, according to the type of accommodation chosen.

## At a glance

	Food and eating out \$140–\$280/week		Public transport fares \$30–\$60/week
	Bills (electricity, gas, water and internet) \$60–\$80/week		Phone \$15–\$30/week
	Coffee on campus \$5		Gym membership \$79/month
	Bike \$150 (Hire: \$3/day)		Car (after purchase) \$150–\$260/week

Costs are a guide only. Calculate your budget using the cost of living calculator: [costofliving.studyaustralia.gov.au](http://costofliving.studyaustralia.gov.au)

Accommodation type	Distance from Stop 1	Weeks of stay	24/7 security and wellbeing support	Year-round social, academic and career programs	Tutorial programs included	Catering included
Little Hall	400m	23 and 52 weeks	✓	✓	✓	✗
Lisa Belleair House	1.8km	23 and 52 weeks	✓	✓	✗	✗
The Lofts	79m	23 and 52 weeks	✓	✓	✗	✗
International House	1.6km	19 and 40 weeks	✓	✓	✓	✓
Medley Hall	950m	19 and 40 weeks	✓	✓	✓	✓
Residential Colleges	400m–1.6km	36–40 weeks	✓	✓	✓	✓
UniLodge Lincoln House	500m	21, 48 and 52 weeks	✓	✓	✗	✗
Student Village Melbourne	650m	26, 48 and 52 weeks	✓	✓	✗	✗
Private and shared rental in metropolitan Melbourne	Within 5.2km	Varies	✗	✗	✗	✗
Homestay	Varies	Varies	✗	✗	✗	Varies



# Undergraduate study at Melbourne

To find out more scan this QR code



## Build a degree around your interests and strengths

Discover your passions through the Melbourne curriculum, while gaining the experience and expertise to set you apart and prepare you for the future, whatever you choose to do.

The Melbourne curriculum is aligned with leading universities in Europe, North America and Asia. You start with a three-year bachelor degree. Once completed, you can enter the workforce with a broad knowledge base and career-ready skills. Or, continue your studies to gain specialised knowledge via a graduate degree or in graduate research.

This flexible model of study allows you to choose subjects from over 100 different study areas to combine focused knowledge in your area of interest with a unique skillset across a range of other subjects.

The Melbourne curriculum gives you an opportunity to figure out what you love to do and who you want to be. You'll develop skills in critical thinking, problem-solving, communicating and leading in the classroom and through industry-based learning and projects, in Melbourne and across our global learning community of over 200 exchange partners.

## How it works

### Choose your undergraduate degree

Your first step is to select the degree that interests you most. We offer seven Bachelor degrees in the Melbourne curriculum – Arts, Biomedicine, Commerce, Design, Fine Arts, Music, and Science – covering over 100 different study areas. We also offer specialist degrees in Agriculture and Oral Health, where everything you study is structured for your chosen discipline.

### Choose a major

Making up one third of your subjects, a major is the subject area you'll focus on during your undergraduate degree. Each degree has a different set of majors. For example, if you're studying a Bachelor of Design, you might choose to major in architecture or construction. Or in a Bachelor of Commerce, you might pick a major in management or finance. In some of our courses, you can choose to do a double major.

In your first year you can focus on your major straight away or explore other subjects before deciding on what major you want to pursue.

## Discovery subjects

Designed to support your introduction to University, Discovery subjects are core first-year subjects within each undergraduate degree that offer varying experiences and delivery modes. These subjects connect your studies to outside the classroom, showing you how your degree can address real-world problems.

## Branch out in your studies

### Breadth subjects

In addition to the subjects offered in your degree, you can also take subjects from other disciplines – like marketing, genetics or philosophy – or test out subjects you're thinking of pursuing in a graduate degree, like law, development studies or urban design.

This approach allows you to explore beyond your study area to build an interdisciplinary skillset, so you'll be capable of critical thinking, problem-solving, communication and leadership in a vastly broad range of professions.

### Concurrent diplomas

You have the option to study an extra qualification alongside your degree. If you're a passionate musician, programmer or mathematician, or have an interest in languages, you can enrol in one of four concurrent diplomas alongside your Bachelor degree - music, computing, mathematical sciences or languages.

## Direct your learning experience





*"I really like how we're not only learning [in the classroom], but also seeing how ideas are being applied in real world scenarios."*

**Ocean Vong (Macau)**  
 Bachelor of Commerce  
 (Management and Marketing)

**Sample course plan – Bachelor of Commerce<sup>1</sup>**  
**Majors in Accounting (with accreditation) and Finance**

Year 1	Semester 1	Sustainable Commerce	Introductory Microeconomics	Quantitative Methods 1	Accounting Reports and Analysis
	Semester 2	Introductory Macroeconomics	Introductory Financial Accounting	Principles of Finance	Principles of Business Law <sup>2</sup>
Year 2	Semester 1	Organisational Behaviour	Quantitative Methods 2	Cost Management	Corporate Law <sup>2</sup>
	Semester 2	Corporate Financial Decision Making	Intermediate Financial Accounting	Accounting Information: Risks & Controls	Breadth
Year 3	Semester 1	Enterprise Performance Management	Analysis of Firms & Financial Statements	Investments	Breadth or Commerce Elective
	Semester 2	Derivative Securities	Level 3 Finance Elective	Auditing and Assurance Services	Taxation Law <sup>2</sup>

■ Core subjects ■ Accounting subjects ■ Finance elective subjects ■ Elective subjects ■ Breadth subjects ■ Capstone subjects

<sup>1</sup> This is a sample course plan only. Subjects offered may change from year-to-year. You'll be advised at current subject offerings price to subject selection and enrolment.  
<sup>2</sup> The breadth subjects featured in this plan are examples only. You must complete at least four breadth subjects in this degree.

# Undergraduate degrees and majors

There are over 100 study areas to choose from in your undergraduate degree. Below is a list of majors, minors and specialisations within your chosen field of study.

## Bachelor of Agriculture

- Agricultural Economics
- Plant and Soil Science
- Production Animal Science

## Bachelor of Arts<sup>①</sup>

- Ancient World Studies
- Anthropology
- Arabic Studies
- Art History
- Asian Studies
- Chinese Societies<sup>②</sup>
- Chinese Studies
- Classics (Ancient Greek and Latin)
- Creative Writing
- Criminology
- Development Studies<sup>②</sup>
- Digital Studies<sup>②</sup>
- Economics
- English and Theatre Studies
- English Language Studies<sup>②</sup>
- Environmental Studies<sup>②</sup>
- European Studies<sup>②</sup>
- French Studies
- Gender Studies
- Geography
- German Studies
- Hebrew and Jewish Studies
- History
- History and Philosophy of Science
- Indigenous Studies
- Indonesian Studies
- Islamic Studies
- Italian Studies
- Japanese Societies<sup>②</sup>
- Japanese Studies
- Knowledge and Learning<sup>②</sup>
- Korean Studies
- Law and Justice<sup>②</sup>
- Linguistics and Applied Linguistics
- Media and Communications
- Medieval and Early Modern Studies<sup>②</sup>
- Philosophy
- Politics and International Studies
- Psychology
- Russian Studies
- Screen and Cultural Studies
- Sociology
- South Asian Studies<sup>②</sup>
- Spanish and Latin American Studies

## Bachelor of Biomedicine

- Biochemistry and Molecular Biology
- Biomedical Engineering Systems
- Biotechnology
- Cell and Developmental Biology
- Genetics
- Human Nutrition
- Human Structure and Function
- Immunology
- Infection and Immunity
- Microbiology
- Neuroscience
- Pathology
- Pharmacology
- Physiology
- Psychology
- Public Health and Epidemiology

## Bachelor of Commerce<sup>①</sup>

- Accounting
- Actuarial Studies
- Economics
- Finance
- Management
- Marketing

① Double major available

② Study area available as a minor only.

To find out  
more scan  
this QR code



## Bachelor of Design<sup>1</sup>

- Architecture
- Civil Engineering Systems
- Computing and Software Systems
- Construction
- Digital Infrastructure Engineering Systems
- Graphic Design
- Landscape Architecture
- Mechanical Engineering Systems
- Performance Design
- Property
- Urban Planning
- User Experience Design

## Bachelor of Fine Arts specialisations

- Acting
- Animation
- Dance
- Film and Television
- Music Theatre
- Production
- Screenwriting
- Theatre
- Visual Art

## Bachelor of Music

- Composition
- Interactive Composition
- Jazz and Improvisation
- Musicology and Ethnomusicology
- Music Studies
- Performance

## Bachelor of Oral Health

- Dental Science
- Clinical Dentistry
- Social Science and Preventative Dentistry
- Vocational Clinical Practice

## Bachelor of Science

- Agricultural Science
- Animal Health and Disease
- Animal Science and Management
- Biochemistry and Molecular Biology
- Biomedical Engineering Systems
- Biotechnology
- Cell and Developmental Biology
- Chemical Engineering Systems
- Chemistry
- Civil Engineering Systems
- Climate and Weather
- Computing and Software Systems
- Data Science
- Digital Infrastructure Engineering Systems
- Ecology and Evolutionary Biology
- Ecosystem Science
- Electrical Engineering Systems
- Environmental Engineering Systems
- Environmental Science
- Food Science
- Genetics
- Geography
- Geoscience
- Human Nutrition
- Human Structure and Function
- Immunology
- Infection and Immunity
- Marine Biology
- Mathematical Physics
- Mathematics and Statistics
- Mechanical Engineering Systems
- Mechatronics Engineering Systems
- Microbiology
- Neuroscience
- Pathology
- Pharmacology
- Physics
- Physiology
- Plant Science
- Psychology
- Veterinary Bioscience
- Zoology

<sup>1</sup> Double major available

# Graduate study at Melbourne

To find out more scan this QR code



## Set yourself apart through specialist graduate study

Follow your Bachelor degree with one of our graduate courses to develop specialist expertise. Graduate with a globally recognised qualification with accreditation for your chosen profession and build your skills at a higher level.

Our graduate courses draw from globally leading research and industry expertise. You'll combine this expert knowledge with leadership, communications, and collaboration skills to gain a competitive edge in your career.

Our partnerships create incredible opportunities for our students, through real-world projects and placements during study, and connections that power your career.

We offer over 400 higher level graduate courses across a broad range of disciplines, among them professional entry programs including the Juris Doctor (law), the Doctor of Medicine (MD), the Master of Teaching, the Master of Engineering and the Master of Architecture.

Our graduate study areas include:

- Architecture, building, planning and design
- Arts, humanities and social sciences
- Business and economics
- Education
- Engineering and information technology
- Environment
- Health
- Law
- Music, and visual and performing arts
- Science
- Veterinary and agricultural sciences.

[study.unimelb.edu.au/study-with-us/graduate-courses](https://study.unimelb.edu.au/study-with-us/graduate-courses)

## How to apply

Coursework degrees: Most courses accept online applications made directly to the University. Applications for Fine Arts and Music, Education, Business, Medicine and Law may also require completion of specific application forms and/or have additional requirements.

Timely applications for the standard offer rounds of most degrees are:

**Semester 1** (Feb): Late October

**Semester 2** (July): Late April

Some courses have early closing dates, and not all courses are available in Semester 2. Please check the course details online before applying. If required, you can seek assistance from one of our overseas representatives.

[study.unimelb.edu.au/find](https://study.unimelb.edu.au/find)

Whether you're choosing your first career, changing direction or want a competitive edge, our world-class research and coursework graduate programs offer a professionally relevant education. Our graduates develop strong connections with community and industry that open the door to an outstanding future.



**51% undergraduate**  
**49% graduate students**



*"UoM students are very diverse, which allows me to learn from other backgrounds and nationalities. My classmates come from all around the globe, both global south and north, from various undergraduate subjects from law, economics, and event arts. This exposure allows me to understand things more inclusively."*

**Anggi Pertiwi Putri (Indonesia)**  
Master of Environment

# Research at Melbourne

To find out  
more scan  
this QR code



## Who says you can't change the world?

As a leading research-intensive university, we attract the best researchers from all over the world.\*

We collaborate with industry partners, other universities, research organisations, government and not-for-profit organisations to achieve research outcomes and remain at the forefront of innovation.

As a graduate researcher, you'll be supervised by leading experts in your field.

## Our research degrees

With research programs in most major disciplines, you will be challenged to make a difference in your field.

### Master of Philosophy

An internationally recognised degree by research and requires the completion of a thesis of 30,000-40,000 words.

### Masters by research

May have a coursework component, along with a thesis of about 30,000 words.

### Doctor of Philosophy

Work under the guidance of two supervisors, who provide advice and support as you complete a thesis of 80,000–100,000 words on a specialised topic.

For help in finding supervisors, see:

[unimelb.edu.au/research-supervisors](https://unimelb.edu.au/research-supervisors)

## Outstanding support

We offer comprehensive support and professional development programs to guide you throughout your research degree. From dedicated research centres and advanced facilities to generous scholarships, career planning resources and established networks, you will be supported to achieve your goals and secure a better future.

[unimelb.edu.au/study/graduate-research](https://unimelb.edu.au/study/graduate-research)

## Scholarships and fees

### Domestic students

Most domestic graduate research students receive an Australian Government Research Training Program Fee Offset Scholarship (RTP) to cover the cost of tuition.

### International students

Over 400 scholarships are available to international graduate researchers. Many cover tuition fees, a living allowance, paid maternity, parental and sick leave.

International students admitted to a research degree are automatically considered for the Graduate Research Scholarship. A separate application is not required.

[scholarships.unimelb.edu.au](https://scholarships.unimelb.edu.au)



**#8 in the world  
for employability**

QS Graduate Employability Rankings 2023

## How to apply for a research degree

### Step 1

Check your eligibility.



### Step 2

Find potential projects and supervisors at [findanexpert.unimelb.edu.au](https://findanexpert.unimelb.edu.au) Contact potential supervisor for support (if required).



### Step 3

Prepare your documentation: proposal (if required), transcripts, cover letter, academic referees, English language test results (if required), supervisor support correspondence (if required) and any other additional requirements for your discipline (eg GMAT/GRE, audition, portfolio).



### Step 4

Submit your application and wait for the outcome.



### Step 5

If you receive an offer, you can then accept your place and prepare to start your life at Melbourne.

Find out more at [study.unimelb.edu.au/how-to-apply/graduate-research](https://study.unimelb.edu.au/how-to-apply/graduate-research)

\* By number of citations, awards and grant success.

# Pathways to professional careers

Combining undergraduate and graduate study at the University of Melbourne is a pathway to limitless opportunity. Here are just some of the doors it can open across our broad range of study areas.

For entry requirements and more information about pathways and where they can take you, visit [study.unimelb.edu.au](http://study.unimelb.edu.au)

Undergraduate degree by study area		Graduate degree		Your career
<b>Agricultural science</b>				
Bachelor of Agriculture	3 years	→	Master of Agricultural Sciences	2 years → Agricultural scientist
<b>Architecture<sup>1</sup></b>				
Bachelor of Design (major in Architecture) OR Any degree with an Architecture Design Studio subject and an Architecture History subject (requires 3 years for Master of Architecture)	3 years	→	Master of Architecture	2 years → Architect
<b>Data science<sup>1</sup></b>				
Any undergraduate degree with a major in data science, computing and software systems or mathematics and statistics	3 years	→	Master of Data Science	2 years → Data scientist
<b>Dentistry<sup>1</sup></b>				
Bachelor of Biomedicine or Science Bachelor of Arts, subject to completing prerequisite subjects, and course plan approval by home faculty	3 years	→	Doctor of Dental Surgery	4 years → Dentist
<b>Engineering<sup>1</sup></b>				
Bachelor of Biomedicine, Design or Science with an engineering major Students in any other undergraduate degree are eligible to progress into the 3-year Master of Engineering, subject to completing prerequisite subjects	3 years	→	Master of Engineering	2 years → Engineer
<b>Environment</b>				
Any undergraduate degree	3 years	→	Master of Environment	2 years → Environmental policy consultant
<b>Film and television</b>				
Any undergraduate degree	3 years	→	Master of Film and Television (Documentary or Narrative)	2 years → Film or television director
<b>Financial analysis</b>				
Bachelor of Commerce	3 years	→	Master of Finance	1.5–2 years → Financial analyst
<b>Information technology</b>				
Bachelor of Design or Science with an IT major eg Bachelor of Science with major in Computing and Software Systems	3 years	→	Master of Information Technology	2 years → IT Professional

<sup>1</sup> Available as a Graduate Degree Package for Australian citizens studying overseas



Undergraduate degree by study area		Graduate degree		Your career	
<b>International relations</b>					
Any undergraduate degree	3 years	→	Master of International Relations	2 years	→ International relations professional
<b>Journalism</b>					
Any undergraduate degree	3 years	→	Master of Journalism	2 years	→ Journalist
<b>Law<sup>1</sup></b>					
Any undergraduate degree	3 years	→	Juris Doctor	3 years	→ Lawyer
<b>Medicine</b>					
Any undergraduate degree Students complete a one-year internship following the Doctor of Medicine in order to obtain full registration as a doctor	3 years	→	Doctor of Medicine	4 years	→ Doctor
<b>Nursing</b>					
Any undergraduate degree	3 years	→	Master of Nursing Science	2 years	→ Nurse
<b>Optometry<sup>1</sup></b>					
Undergraduate degree with prerequisite subjects	3 years	→	Doctor of Optometry	4 years	→ Optometrist
<b>Physiotherapy<sup>1</sup></b>					
Undergraduate degree with prerequisite subjects	3 years	→	Doctor of Physiotherapy	3 years	→ Physiotherapist
<b>Psychology</b>					
Bachelor of Arts, Biomedicine or Science with an accredited major in Psychology	3 years	→	Fourth-year honours or Graduate Diploma (Advanced) in Psychology	1 year	→
			Master of Psychology (Clinical Psychology)	2 years	→ Clinical psychologist OR Clinical neuropsychologist
<b>Research</b>					
Any undergraduate degree	3 years	→	Graduate degree OR Honours	2 years 1 year	→
			Doctor of Philosophy OR Master of Philosophy	3 years 1.5–2 years	→ Researcher
<b>Teaching<sup>1</sup></b>					
Any undergraduate degree (with TCAT)	3 years	→	Master of Teaching (Early Childhood, Primary, Early Childhood and Primary, or Secondary)	2 years	→ Teacher
<b>Veterinary medicine<sup>1</sup></b>					
Bachelor of Agriculture, Biomedicine or Science with at least one semester of study in both general/cellular biology and biochemistry Shortest pathway option is through the Veterinary Bioscience major in the Bachelor of Science <sup>2</sup>	3 years	→	Doctor of Veterinary Medicine	3–4 years	→ Veterinarian

<sup>1</sup> Available as a Graduate Degree Package for Australian citizens studying overseas

<sup>2</sup> The Veterinary BioSciences major is only available to students who have received a provisional/conditional course offer to commence the Doctor of Veterinary Medicine following successful completion of the Bachelor of Science. For (BSc) students intending to apply for the Doctor of Veterinary Medicine via the Veterinary BioSciences major it is a requirement that students have previously completed VCE Physics Units 3/4 or equivalent, or a 12.5 point Level 1 Physics subject. Students must complete four breadth subjects over the first two years of the Bachelor of Science degree. Students may complete one or two breadth subjects at first year level and two or three breadth subjects at second year level.

# Your student experience

Intern, gain international experience, start a business, volunteer, work part time and gain valuable skills while you study.

## Student support

Our Stop 1 team can help you from administration and enrolments, to health and wellbeing support and academic skills and career opportunities. You can drop in or book an individual appointment with a student adviser all throughout the year to talk to someone who can help you navigate your university experience.

[study.unimelb.edu.au/student-life/life-at-melbourne/your-support-services](http://study.unimelb.edu.au/student-life/life-at-melbourne/your-support-services)

## Practical experience

Internships are a great way to get first-hand industry experience. Our students intern in leading companies and institutions in Australia and abroad, paving the way to fulfilling and exciting careers.

The Students@Work Internship Program is available to students for on-campus paid employment for up to 9 months providing work and skill development.

Find out more [go.unimelb.edu.au/vd3e](http://go.unimelb.edu.au/vd3e)

## Leadership and networking

Employers love to see leadership experience on your resume. Lead a student group, direct a play, mentor a younger student or help run one of over 200 clubs and societies to make connections and build your networks.

## Melbourne Plus

*"Through Melbourne Plus I was able to network with lovely students and professionals in my fields of interest, and being able to contribute to a multitude of causes and initiatives during my undergraduate degree was incredibly rewarding."*

Melbourne Plus rewards your growth and development with certified digital credentials that you can earn through a wide range of volunteer and paid co-curricular activities. You'll build capabilities with transferable skills and be able to share these credentials with your networks and future employers.

## Skill building

The Global Leadership and Employability team provides programs and services to students free of charge, including screened job listings, workshops, industry events and connections with alumni. In addition, many faculties offer seminars, practical training and networking events to help you break into a great career.

You can also participate in the Student Peer Leaders Network career-readiness programs, events and services to support the student community.

Learn more [go.unimelb.edu.au/6h8i](http://go.unimelb.edu.au/6h8i)

## Connection and belonging

Find your place in our vibrant, diverse and welcoming community through our Orientation activities, Melbourne Commencement Ceremonies and Wominjeka welcome event.

## Melbourne Commencement Ceremony (MCC)

This event marks the beginning of your journey as a University of Melbourne student and is a core feature of the Melbourne Orientation experience.

## Melbourne Peer Mentor Program

*"My mentors were very kind and welcoming. I got to meet a lot of people and make new friends!"*

In your first semester of undergraduate studies, you'll be matched with a Peer Mentor from your faculty as part of a small group of students. Hear from fellow students, ask about navigating uni life, and make friends with other people in your degree. You can then develop your leadership and interpersonal skills in your second year onwards by signing up to become a Peer Mentor yourself!

## Advising and mentoring

From your second undergraduate semester onwards, you'll have meetings with an academic adviser to provide advice, identify areas of personal interest to explore, and help you in your university journey.

Throughout your studies, you'll also be able to explore career and graduate study options with alumni and industry mentors through the Ask Alumni mentoring program.

[unimelb.edu.au/alumni/get-involved/volunteer/ask-alumni](http://unimelb.edu.au/alumni/get-involved/volunteer/ask-alumni)

## Discovery subjects

First year subjects help you understand the University's role in Melbourne, Australia and globally; the importance of Indigenous heritage, knowledge and culture; respect for diversity and inclusion sustainability; and the cutting-edge research happening in your study area.

[go.unimelb.edu.au/u59s](http://go.unimelb.edu.au/u59s)

## Clubs and societies

Proudly multicultural, our diverse student community is represented by more than 200 clubs and societies. Joining a club or society allows you to continue the extracurricular activities you love, find a new interest or meet like-minded friends.

[umsu.unimelb.edu.au/buddy-up/clubs/](http://umsu.unimelb.edu.au/buddy-up/clubs/)

## Sport

Access fitness centers, pool, playing fields and tennis courts for your physical and mental well-being. Choose from over 40 sports to play at all levels, from recreational to intervarsity.

[sport.unimelb.edu.au](http://sport.unimelb.edu.au)

## Studying overseas

You could study at some of the world's most prestigious institutions to gain an academic and professional edge. Take French in Québec, science in Estonia, business in Beijing or anthropology in Santiago. Go for as long as a year on exchange to another renowned university or use your summer/winter break to immerse yourself in a short term overseas program.

*"I'm currently part of a student club - I'm part of the Malaysian Society, and it's been really good to just meet fellow Malaysians from back home."*

Trinity Chua (Malaysia)  
Bachelor of Arts



# How to apply

To find out  
more scan  
this QR code



## Undergraduate courses

Application deadlines for the standard offer rounds of most degrees are:

- **Semester 1 (Feb):** Late November
- **Semester 2 (July):** Late May

If required, seek assistance from one of our official overseas representatives.

[study.unimelb.edu.au/how-to-apply](http://study.unimelb.edu.au/how-to-apply)

## International students studying Australian Year 12

Apply through the Victorian Tertiary Admissions Centre (VTAC).

## Domestic students studying outside Australia

Apply through the Victorian Tertiary Admissions Centre (VTAC).

To find out more visit: [go.unimelb.edu.au/cvk6](http://go.unimelb.edu.au/cvk6)

## Graduate courses

Application deadlines for the standard offer rounds of most degrees are:

- **Semester 1 (Feb):** Late October
- **Semester 2 (July):** Late April

Some courses have early closing dates, and not all courses are available in Semester 2. Please check the course details online before applying. If required, you can seek assistance from one of our overseas representatives.

[study.unimelb.edu.au/find](http://study.unimelb.edu.au/find)

## Research degrees

Applications are accepted throughout the year. Entry requirements vary so check with the relevant graduate school.

[unimelb.edu.au/study/graduate-research](http://unimelb.edu.au/study/graduate-research)

## Visa information

### Obtaining a visa

There are different student visas based on the type of course you study and whether you want part time employment. Check the website of the Australian Department of Home Affairs for details:

[immi.homeaffairs.gov.au/visas/getting-a-visa/visa-finder/study](http://immi.homeaffairs.gov.au/visas/getting-a-visa/visa-finder/study)

## Submit an application online

### Step 1

#### Apply direct

Fill out an online application. We will contact you with the outcome and let you know if additional information is required. You can also accept your offer and apply for a student visa online.

#### Or apply through an official overseas representative

You can use one of the University's official overseas representatives in your country to help lodge an application, accept your offer, or apply for a student visa (if you are admitted to the University).

For more information about their costs, services and contact details, go to: [study.unimelb.edu.au/how-to-apply/find-an-overseas-representative](http://study.unimelb.edu.au/how-to-apply/find-an-overseas-representative)



### Step 2

Provide a copy of your academic results to the University as part of your online application. If you are currently studying, you may be required to submit your final results (when they become available) before a complete assessment can be made.



### Step 3

Within four weeks of the University receiving your complete application you will receive an outcome email. If we require further information, you will be notified and processing will proceed once the missing details are provided.



### Step 4

Complete the steps outlined in your emailed letter of offer, complete your personalised offer acceptance form and provide your tuition fee deposit and Overseas Student Health Cover payment. For more information go to: [students.unimelb.edu.au/get-started](http://students.unimelb.edu.au/get-started)



### Step 5

Receive your Confirmation of Enrolment (CoE) document, which you require to obtain your student visa.

## ESOS: Protecting international students

The Australian Government has laws for education institutions that deliver education services to international students on a student visa. To find out about your rights, go to:

[services.unimelb.edu.au/international/visas/esos](http://services.unimelb.edu.au/international/visas/esos)

## Overseas Australians

Australian citizens and permanent residents and New Zealand permanent residents are domestic students regardless where they live in the world.

All domestic undergraduate students must apply through VTAC. Domestic graduate students apply direct to the University. Domestic applicants are not permitted to use the services of education agents.

Domestic students currently residing overseas are eligible for Commonwealth Supported Places/domestic tuition and financing available from the Australian government.

[go.unimelb.edu.au/cvk6](http://go.unimelb.edu.au/cvk6)



*"For me choosing the University of Melbourne has been a top choice. It's expressive, vibrant, and there's such a great culture of people that are studying here as well."*

**Enya Yingshan Loo (Singapore)**  
Bachelor of Arts

# Undergraduate entry requirements

## Foundation studies

We accept a number of foundation studies programs as entry pathways to our undergraduate courses.

### Trinity College Foundation Studies

Graduates of Trinity College Foundation Studies are guaranteed a place in the University of Melbourne course of their choice if they satisfy the prerequisites and meet the required scores.

Trinity offers accelerated and extended programs to meet your individual needs, and the curriculum is supervised by the University of Melbourne's Academic Board. The College is ideally located near the University's Parkville campus.

[trinity.unimelb.edu.au/tcfs](http://trinity.unimelb.edu.au/tcfs)

## English language requirements

### English language test<sup>1</sup>

Use an approved English language test to meet English language requirements. You must satisfy the requirements in one sitting within the 24 months preceding the proposed date of commencement.

### Secondary or tertiary studies in English

Meet the English language requirements for undergraduate study by satisfactorily completing secondary studies in an approved final-year English subject, or through approved tertiary study in English. Further information about the University's English language requirements, including graduate requirements, is available at:

[unimelb.edu.au/study/english-reqs](http://unimelb.edu.au/study/english-reqs)

Approved English language test	Required score (all undergraduate courses) <sup>2</sup>
IELTS (Academic)	Overall band score of 6.5 or more (with no band less than 6.0)
TOEFL	79 or more and scores of 21 in Writing, 18 in Speaking, 13 in Reading and 13 in Listening
Pearson Test of English (Academic)	Overall score between 58 and 64 inclusive and no PTE communicative skills score below 50
Cambridge English: Advanced/ Certificate in Advanced English (CAE)	CAE score of 176 with no skill less than 169

<sup>1</sup> To see graduate English language requirements, please see: [study.unimelb.edu.au/how-to-apply/english-language-requirements/graduate-english-language-requirements](http://study.unimelb.edu.au/how-to-apply/english-language-requirements/graduate-english-language-requirements)

<sup>2</sup> You must achieve the following scores to meet the English language requirement for the Bachelor of Oral Health: TOEFL (internet-based): total score of at least 94 and scores of at least 27 for writing, 23 for speaking, 24 for reading and 24 for listening. To submit your scores when you apply, use our TOEFL Institution Code: 0974. IELTS: total score of at least 7.0 in the Academic International English Language Testing System (IELTS), with no bands less than 7.0. Pearson Test of English: overall score of at least 65 and achieve no PTE communicative skills score below 65.



## University Semester Dates 2025

### Semester 1: 3 March–1 June (12 weeks)

- Easter Holiday: 18 April–25 April
- SWOT Vacation: 2 June–6 June
- Examinations: 9 June–27 June
- Results release date: 11 July

### Semester 2: 28 July–24 October (12 weeks)

- SWOT Vacation: 27 October–31 October
- Examinations: 3–21 November
- Results release date: 5 December



# Undergraduate entry requirements and course fees

This table provides a quick summary of our undergraduate degrees and should be used as a guide only. The published guaranteed scores are those approved for 2024 and should be considered indicative for 2025. The 2025 guaranteed scores are yet to be finalised and will be available on the University's website once confirmed.

	Duration (EFTSL) <sup>1</sup>	Australian Year 12 international students: 2024 guaranteed ATAR <sup>2</sup>	International Baccalaureate international students: 2024 guaranteed IB score <sup>3</sup>	GCE A Levels international students: 2024 guaranteed A Level <sup>3</sup>	Trinity College Foundation Studies international students: 2024 guaranteed TCFS score <sup>3 4</sup>	Australian University Foundation Programs international students: indicative score <sup>1 5</sup>	US High School Diploma <sup>6 7</sup>
<b>Bachelor of Agriculture</b> Entry: February (Semester 1)	3	70.00	25	CDD	75	76	GPA 3.0 and a test score (SAT 1250 or ACT 26 or AP exam aggregate score 9)
<b>Bachelor of Arts</b> Entry: February (Semester 1) and July (Semester 2)	3	85.00	31	BCC	80	83	GPA 3.2 and test score (SAT 1250 or ACT 28 or AP exam aggregate score 28)
<b>Bachelor of Biomedicine</b> Entry: February (Semester 1) and July (Semester 2)	3	95.00	37	AAB	91	93	GPA 3.7 and test score (SAT 1400 or ACT 30 or AP exam aggregate score 18)
<b>Bachelor of Commerce</b> Entry: February (Semester 1) and July (Semester 2)	3	92.00	35 <sup>8</sup>	ABB <sup>9</sup>	86 <sup>8</sup>	89 <sup>9</sup>	GPA 3.5 and test score (SAT 1380 or SAT 29 or AP exam aggregate score 17)
<b>Bachelor of Design</b> Entry: February (Semester 1) and July (Semester 2)	3	85.00	31	BCC	80	83	GPA 3.2 and test score (SAT 1320 or ACT 28 or AP exam aggregate score 28)
<b>Bachelor of Fine Arts</b> Entry: February (Semester 1)	3	NA <sup>12</sup>	NA <sup>12</sup>	<sup>12</sup>	<sup>12</sup>	<sup>11</sup>	Admission based on portfolio or audition and completion of high school <sup>11</sup>
<b>Bachelor of Music</b> Entry: February (Semester 1) and July (Semester 2)	3	NA <sup>12</sup>	NA <sup>12</sup>	<sup>12</sup>	<sup>12</sup>	<sup>11</sup>	Admission based on portfolio or audition and completion of high school <sup>11</sup>
<b>Bachelor of Oral Health</b> Entry: February (Semester 1)	3	NA	NA <sup>12</sup>	BCC <sup>13</sup>	80 <sup>13</sup>	83 <sup>13</sup>	GPA 3.2 and test score (SAT 1320 or ACT 28 or AP exam aggregate score 28) <sup>13</sup>
<b>Bachelor of Science</b> Entry: February (Semester 1) and July (Semester 2)	3	85.00	31	BCC	80	83	GPA 3.2 and test score (SAT 1320 or ACT 28 or AP exam aggregate score 28)

**1 Equivalent Full-Time Student Load (EFTSL):**  
1 EFTSL is a standard annual full-time load.

**2 Domestic students:** Applicants who achieve the minimum Australian Tertiary Admission Rank (ATAR) for a course will be eligible for consideration for a place, provided prerequisite studies and any other specific course requirements are met. The lowest selection ATAR to which an offer was made may be higher, depending on demand for the course and the number of places available. Only applicants eligible for special entry schemes will be admitted below the lowest selection ATAR.

**3 International students:** The University guarantees admission to a course when an international student achieves the required score, meets prerequisite studies, satisfies the English language requirements and there are still places available in the course at the time of acceptance. If you do not meet the guaranteed score, your application will not be considered for entry. Guaranteed scores apply only if no further study has been undertaken after completion of one of these programs. Guaranteed ATARs are reviewed annually.

**Domestic students completing an international qualification:**  
The score listed should be considered a minimum score to be eligible for a place in that course. The actual standard required may be higher depending on the demand for the course and the number of Commonwealth Supported Places (CSP) available.

**4 International students must achieve at least the indicative score, meet the prerequisite subjects and satisfy the English language requirements to be eligible to be considered for the course. For domestic students completing an international qualification, the score listed should be considered a minimum score to be eligible for a place in that course.**

**5 A minimum of 50 is required in English for Academic Purposes (EAP) and prerequisite subjects unless otherwise specified. The score is calculated using the best four subjects excluding EAP. Maths 1 is included in the best four score for Commerce; and English and History of Ideas are included for Arts. The final average is usually the average of the best four year-long subjects, including prerequisites for some courses. For UNSW, the GPA on the final transcript is used. For WAUFP, the CPS is used and different scores apply.**

**6 US High School Diploma**

The GPA is unweighted, based on a 4.0 scale. Only grades from the final two years of study are used to determine the GPA. A test score is required, either SAT, ACT or an AP exam aggregate score. See [go.unimelb.edu.au/b276](http://go.unimelb.edu.au/b276) for additional information about US high school diploma entry requirements.

**7 International students:** The typical course fee shown provides an estimate of the tuition fees for the first year of the course in 2024. This estimate assumes a full-time study load, commencing Semester 1. For some degrees a typical fee range is shown, due to the wide range of variables that may affect the course structure, and subjects taken. Actual tuition fees payable may vary and will be the sum of the fees for all subjects in which you enrol.

**8 Domestic students:** Eligible domestic students who satisfy course prerequisites and achieve an ATAR of 95.00 or above are guaranteed a place in the Bachelor of Commerce in 2024.

**International students:** Recipients of the Bachelor of Commerce Global Scholarship may be admitted with an entry score that is lower than that published here. This scholarship is available only to international students. For more details, see: [scholarships.unimelb.edu.au/bcom-global-scholarship](http://scholarships.unimelb.edu.au/bcom-global-scholarship)



To find out  
more scan  
this QR code



Prerequisite subjects	Tuition fees domestic	Tuition fees international
A-levels, IB Diploma, US High School Diploma and VCE subjects Refer to study.unimelb.edu.au/how-to-apply/satisfy-subject-prerequisites for additional tests and subjects as alternatives to those listed below.	Commonwealth Supported Place	2025 typical course fee for first year (SAUD/EFTSL) ① ⑦
<b>A-levels:</b> Mathematics and at least grade C in an approved A or AS Level English subject <b>IB:</b> English, and a minimum grade of 4 in either Applications and interpretations HL, Analysis and approaches SL, or Analysis and approaches HL; or a minimum grade of 5 in Applications and interpretations SL <b>US High School Diploma:</b> AP Calculus AB or AP Calculus BC exam; AP English Language and Composition or EP English Literature and Composition exam. ⑩ <b>VCE:</b> A study score of at least 25 in English/English Language/Literature or at least 30 in EAL, and at least 25 in Mathematical Methods or Specialist Mathematics or a study score of at least 30 in Further Mathematics	✓	\$51,228
<b>A-levels:</b> Approved A or AS Level English subject ② <b>IB:</b> English. ④ <b>US High School Diploma:</b> AP English Language and Composition or AP English Literature and Composition exam. ⑨ ⑩ <b>VCE:</b> A study score of at least 25 in English/English Language/Literature or at least 30 in EAL. Applicants intending to major in Economics are strongly encouraged to complete Mathematical Methods or equivalent ③	✓	\$37,884–\$52,032
<b>A-level:</b> Chemistry, Mathematics and an approved A or AS Level English subject <b>IB:</b> English, Chemistry and a minimum grade of 4 in either Applications and interpretations HL, Analysis and Approaches SL, or Analysis and Approaches HL <b>US High School Diploma:</b> AP Chemistry, and AP Calculus AB or AP Calculus BC and AP English Language and Composition or AP English Literature and Composition ⑩ <b>VCE:</b> A study score of at least 25 in English/English Language/Literature or at least 30 in EAL, and at least 25 in Chemistry and in Mathematical Methods or Specialist Mathematics	✓	\$50,596–\$57,584
<b>A-level:</b> Mathematics and an approved A or AS Level English subject <b>IB:</b> English, and a minimum grade of 4 in either Applications and interpretations HL, Analysis and approaches SL, or Analysis and approaches HL <b>US High School Diploma:</b> AP Calculus AB or AP Calculus BC exam; AP English Language and Composition or EP English Literature and Composition exam. ⑩ <b>VCE:</b> A study score of at least 25 in English/English Language/Literature or at least 30 in EAL, and at least 25 in Mathematical Methods or Specialist Mathematics ⑩	✓	\$49,220–\$55,328
<b>A-level:</b> An approved A or AS Level English subject. ④ <b>IB:</b> English. ④ <b>US High School Diploma:</b> AP English Language and Composition or EP English Literature and Composition exam. ⑩ <b>VCE:</b> A study score of at least 25 in English/English Language/Literature or at least 30 in EAL. ④	✓	\$41,668–\$55,676
<b>A-level:</b> An approved A or AS Level English subject <b>IB:</b> English <b>VCE:</b> A study score of at least 25 in English/English Language/Literature or at least 30 in EAL <b>US High School Diploma:</b> AP English Language and Composition or EP English Literature and Composition exam. ⑩	✓	\$37,312–\$39,404
<b>A-level:</b> An approved A or AS Level English subject <b>IB:</b> English <b>VCE:</b> A study score of at least 25 in English/English Language/Literature or at least 30 in EAL <b>US High School Diploma:</b> AP English Language and Composition or EP English Literature and Composition exam. ⑩	✓	\$37,312–\$38,456
<b>A-level:</b> Biology or Chemistry and at least Grade B in an approved A or AS Level English subject <b>IB:</b> English and one of Biology or Chemistry <b>US High School Diploma:</b> AP Biology or AP Chemistry exam; AP Calculus AB or AP Calculus BC exam; AP English Language and Composition or EP English Literature and Composition exam. ⑩ <b>VCE:</b> A study score of at least 25 in English/English Language/Literature or at least 30 in EAL, and at least 25 in one of Biology or Chemistry	✓	\$75,696
<b>A-level:</b> An approved A or AS Level English subject, Mathematics and one of Biology, Chemistry or Physics, OR An approved A or AS Level English subject and both Mathematics and Further Mathematics ④ <b>IB:</b> A minimum grade of 4 in either Applications and interpretations HL, Analysis and approaches SL, or Analysis and approaches HL. A minimum grade of 4 in one of Biology, Chemistry or Physics at HL or SL ④ <b>US High School Diploma:</b> AP English Language and Composition or AP English Literature and Composition exam; AP Calculus AB AP Calculus BC exam; AP Biology or AP Chemistry exam or one of the following Physics combinations: AP Physics 1 and 2 exams, AP Physics 1 and AP Physics C Electricity and Magnetism exams, or AP Physics C: Mechanics and AP Physics C: Electricity and Magnetism exams. An AP science exam is not required with both AP Calculus AB and AP Calculus BC exams. ⑩ <b>VCE:</b> A study score of at least 25 in English/English Language/Literature or at least 30 in EAL, and at least 25 in Mathematical Methods or Specialist Mathematics, and in one of Biology, Chemistry or Physics; OR A study score of at least 25 in English/English Language/Literature or at least 30 in EAL, and at least 25 in both Mathematical Methods and Specialist Mathematics ④	✓	\$49,188–\$57,928

② Applicants intending to major in Economics are strongly encouraged to complete VCE Mathematical Methods or equivalent.

⑩ AP exams are a minimum score of 3. Alternatives to AP exams for academic prerequisites include: a. an equivalent subject from a US university or college (pending a review of the syllabus); b. an equivalent subject from another high school qualification recognised by the University. Alternatives to AP exams to the meet the English requirement include: a. an English subject from a US university or college (pending syllabus review); b. an English subject from another high school qualification recognised by the University; or c. a standardized English test recognised by the University.

⑪ Applicants intending to major in Actuarial Studies or continue on to the Master of Engineering following the Bachelor of Commerce are strongly encouraged to complete VCE Specialist Mathematics Units 3 and 4 or equivalent.

⑫ A range of criteria is used for selection. Visit [study.unimelb.edu.au](http://study.unimelb.edu.au) for additional requirements.

⑬ International and domestic transferring students only.

⑭ Indicative score only (entry is not guaranteed).

⑮ **Arts, Biomedicine, Commerce, Design and Science:** Students who achieve an ATAR or notional ATAR of 99.90 or above (or 90.00 or above if Indigenous) and satisfy course prerequisites will be guaranteed a Melbourne Chancellor's Scholarship. Students must have completed an Australian Year 12 qualification or the International Baccalaureate (IB) in Australia or be an Australian citizen and have completed an Australian Year 12 or IB overseas in the year prior to entry (students must either enrol immediately or be granted a deferral in the year following Year 12).

**Music:** Students who achieve an ATAR or notional ATAR of 99.85 or above (or 90.00 or above if Indigenous), achieve an audition score of A+ and satisfy course prerequisites will be guaranteed a Melbourne Chancellor's Scholarship (Music). Students must have completed an Australian Year 12 qualification or the International Baccalaureate (IB) in Australia or be an Australian citizen and have completed an Australian Year 12 or IB overseas in the year prior to entry (students must either enrol immediately or be granted a deferral in the year following Year 12).

⑯ Applicants intending to major in Civil Systems, Computing, Construction, Digital Technologies, Mechanical Systems, Property or Spatial Systems may be required to undertake a bridging subject in mathematics as breadth in first year. This is equivalent to Units 3 and 4 Mathematical Methods, and entry requires a mathematics background equivalent to Units 1 and 2 Mathematical Methods.

⑰ International students with other qualifications will have no idea what is VCE Units 3 or 4 and what are the equivalents in their qualification.

⑱ Refer to tuition fees for the relevant bachelors degree.

# Scholarships

We offer more than 1200 scholarships and prizes for new and current students.

Our scholarships range from those awarded on merit, to others to assist with your expenses or to enable you to travel the globe. Some support your whole course or allow you to explore a specific interest.

The many prizes, grants and bursaries we offer help you get the most out of your time at university. These are awarded to continuing students at different points in their studies.

There are prizes for academic achievement, grants to undertake volunteering or leadership activities and bursaries to ease financial pressures so you can focus on your studies.

[scholarships.unimelb.edu.au/](https://scholarships.unimelb.edu.au/)

## Melbourne Chancellor's Scholarship

Offered to students with outstanding academic achievement during their Australian Year 12 or International Baccalaureate (IB) undertaken in Australia (Australian citizens only).

## Melbourne International Undergraduate Scholarship

Offers fee remissions for high-achieving international students who have completed secondary school outside Australia, or a foundation program in Australia.

## Humanitarian Access Scholarship

Offering full fee remission and \$15,000 in living allowances to talented students, the Humanitarian Access Scholarship is for those who have applied for asylum in Australia.

## Graduate Scholarships

Offered to high-achieving international students with one-off \$5,000 or \$10,000 or 25% to 100% fee remissions for the duration of the course. A scholarship may reduce the fees by between \$100–\$500 per week.

## Residential college scholarships

More than one third of college students receive financial assistance, up to \$15,000 from college scholarships and bursaries available.

[colleges.unimelb.edu.au/scholarships-and-fees/](https://colleges.unimelb.edu.au/scholarships-and-fees/)

## Faculty scholarships

Our faculties offer hundreds of specific awards that can help you through your undergraduate studies. For a full list and how to apply, check faculty websites.



To find out  
more scan  
this QR code



*"It has not only been an immense financial help for my family, but it has also provided me with the ease of mind to pursue my Bachelor of Science to the best of my abilities."*

**Gautam Puri (Thailand)**

Bachelor of Science

Recipient of a Melbourne International Undergraduate Scholarship.



THE UNIVERSITY OF  
MELBOURNE

# UniMelb on-Demand



Get to know us better  
in your own time

The University of Melbourne (Australian University) PRV12150 / CRICOS 00116K

**Intellectual property:** Copyright in this publication is owned by the University and no part of it may be reproduced without the permission of the University.  
**Disclaimer:** The University endeavours to ensure that information contained in this publication is current and correct at the time of production (March 2024).