

EXPANDING A TRADITION OF EXCELLENCE

**EMBRY-RIDDLE**  
Aeronautical University  
ASIA







W

hen it comes to teaching the science, practise, and business of aviation and aerospace, the name of one institution echoes throughout the world—Embry-Riddle Aeronautical University.



Established in 1925, Embry-Riddle has stood at the pinnacle of aviation and aerospace higher education for more than 87 years. Our curriculum is developed and delivered by the brightest minds in the aviation world. Decade after decade, our graduates go on to become aviation's greatest leaders, visionaries and success stories. And now, aviation and aerospace professionals based in Asia have access to our unparalleled training and professional development programmes.

**Welcome to Embry-Riddle Aeronautical University.**





# A LONG TRADITION OF AVIATION EXCELLENCE

L

earning with Embry-Riddle means learning with the world's oldest and largest fully accredited university specialising in aviation and aerospace. With residential campuses in Daytona Beach, Florida and Prescott, Arizona and a network of more than 150 locations in the United States, Europe Middle East, and Online, the University is a truly global educational institution. In January 2011, we expanded our network even more by establishing Embry-Riddle Asia, headquartered in Singapore.

## Accreditation

Embry-Riddle Aeronautical University is regionally accredited in the United States by the Commission on Colleges of the Southern Association of Colleges and Schools (1866 Southern Lane, Decatur, GA 30033-4097; 404-679-4501) to award degrees at the associate, bachelor, master and doctoral levels.

With more than 34,000 students enrolled in our programmes today and over 100,000 alumni, Embry-Riddle is a worldwide family of leaders in the aviation and aerospace industry.

34,000





## Mission

Our mission is to teach the science, practise and business of aviation and aerospace, preparing students for productive careers and leadership roles in service around the world. We believe a vibrant future for aviation and aerospace rests in the excellence of our students, and we are committed to providing a climate that facilitates that excellence. In addition to establishing the highest standards of academic achievement, our curriculum emphasises collaboration, teamwork, ethics and personal responsibility.

Embry-Riddle Asia is committed to bringing these excellent higher education opportunities to the countries of the Asia-Pacific Region. Working in collaboration with Asian governments and educational institutions, as well as with organisations from the worldwide aviation/aerospace industry, we offer quality academic programmes focused on business administration, engineering, and technology for aviation and aerospace. Delivered through a combination of classroom and online learning, these programmes offer the same exceptional educational experience that has long been associated with our university.

---

**Embry-Riddle students in Asia earn the same degree as their counterparts at other campuses. They benefit from the same knowledge, qualifications and competitive advantage that comes with an Embry-Riddle credential.**

---



*I had no hesitation at all about being in the first class at Embry-Riddle Singapore because I knew that Embry-Riddle was the best. My Embry-Riddle education makes me more knowledgeable, and it puts me ahead of my colleagues because very few of the people I work with have aviation management degrees. The structure of the programme and the different learning modes offer me the flexibility to manage my time more easily.*

CHEE SEN LIM

Second Officer  
SilkAir  
MBAA Graduate





# REACHING NEW HORIZONS IN AVIATION EDUCATION

**T**

he emerging aviation markets of Singapore and surrounding Southeast Asia are growing faster than any other aviation market in the world. Embry-Riddle Asia was established to prepare local aviation professionals for the challenges and opportunities that accompany such rapid expansion.

Our growing presence in Asia will continue our university's long-standing history of providing focused educational programmes and a dynamic, hands-on learning experience. In addition to expanding their industry knowledge, students will cultivate their management abilities, learn practical workplace strategies, and develop the professional skills they need to thrive in a global community.



**KEVIN LI**

Aerospace Engineer,  
Pratt and Whitney  
MBAA Graduate

*I think it's great to have Embry-Riddle in Singapore. My education widens my scope. Throughout my years of learning, I've been in engineering, so I knew nothing about the economics of aviation. But in my last Embry-Riddle class, I learned how people manage airports and how airlines plan their flight schedules. It is really eye-opening to go beyond my technical knowledge. An MBAA from Embry-Riddle will propel me and allow me to reach my goals.*













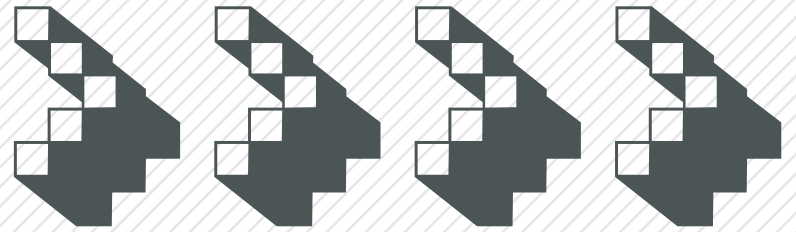






### MOVING FORWARD

Research and development (R&D) is expected to double within the next 5 to 10 years. Embry-Riddle Aeronautical University has a strong research initiative to foster a R&D rich community among faculty and staff.



## AN UPWARD TREND

**T**he aviation sector in the Asia Pacific will see tremendous growth in the next 20 years. Forecasts estimate the production of more than 13,000 new commercial airplanes that will need hundreds of thousands of pilots and technicians for support. The Civil Aviation Authority of Singapore has dedicated resources to increase productivity and encourage innovative and sustainable aviation at the Changi Airport. Major companies like Rolls Royce, Pratt & Whitney, GE Aviation, Airbus, Boeing have identified Singapore's significant role in the international aviation community and have established operations here.

### Research

Research at Embry-Riddle Aeronautical University examines the past, present and future needs in the aviation and aerospace industry. Faculty and students are developing innovative solutions and operational efficiencies for industry and government partners with global impact.

**Embry-Riddle partners with private and public entities to assist in developing solutions to today's and tomorrow's aeronautical and aerospace problems. Here at the world's largest aviation-oriented university, our focus on applied research is unique.**





## Programmes

In Singapore's thriving aerospace and aviation industry, knowledge is power. Embry-Riddle Aeronautical University offers part-time programmes for working professionals looking to learn more on a particular subject and those hoping to get a promotion or start a new career path. Full-time programmes are offered for younger students looking to finish a degree before entering the workforce.

No matter which programme you choose, you can benefit from having a degree backed by the Embry-Riddle name and everything it stands for – leading-industry knowledge, advanced research, faculty who are also industry professionals, partnerships with globally renowned companies and lifetime affiliation with a group of individuals as passionate about aviation and aerospace as you are.

**Embry-Riddle offers the following undergraduate and graduate level programmes in Asia:**

### Undergraduate (Part-Time or Full-time)

- ▲ Bachelor of Science in Aeronautics
- ▲ Bachelor of Science in Aviation Business Administration

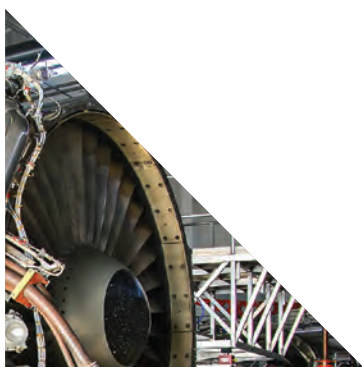
### Graduate (Part-Time or Full-time)

- ▲ Master of Aeronautical Science
- ▲ Master of Business Administration in Aviation

### Postgraduate (Part-Time)

- ▲ Ph.D. in Aviation

*For a complete description of the programme curriculum and requirements, please visit [asia.erau.edu/degrees-programs](http://asia.erau.edu/degrees-programs)*



## Embry-Riddle Online Courses

### Online Programmes

At Embry-Riddle Online, earning your degree can be achieved virtually anywhere. Embry-Riddle recognises that completing a degree in a traditional classroom environment doesn't work for everyone. We understand most adult learners have very busy lives and face unique challenges while earning a degree. We are here to help you overcome those challenges so you can focus on your education.

- ▲ Aeronautics
- ▲ Aviation Business Administration
- ▲ Aviation Maintenance
- ▲ Aviation Security
- ▲ Communication
- ▲ Emergency Services
- ▲ Engineering Management
- ▲ Engineering Technology
- ▲ Information Security & Assurance
- ▲ Leadership
- ▲ Logistics & Supply Chain Management
- ▲ Management
- ▲ Management Information Systems
- ▲ Occupational Safety Management
- ▲ Project Management
- ▲ Systems Engineering
- ▲ Technical Management
- ▲ Transportation
- ▲ Unmanned Systems

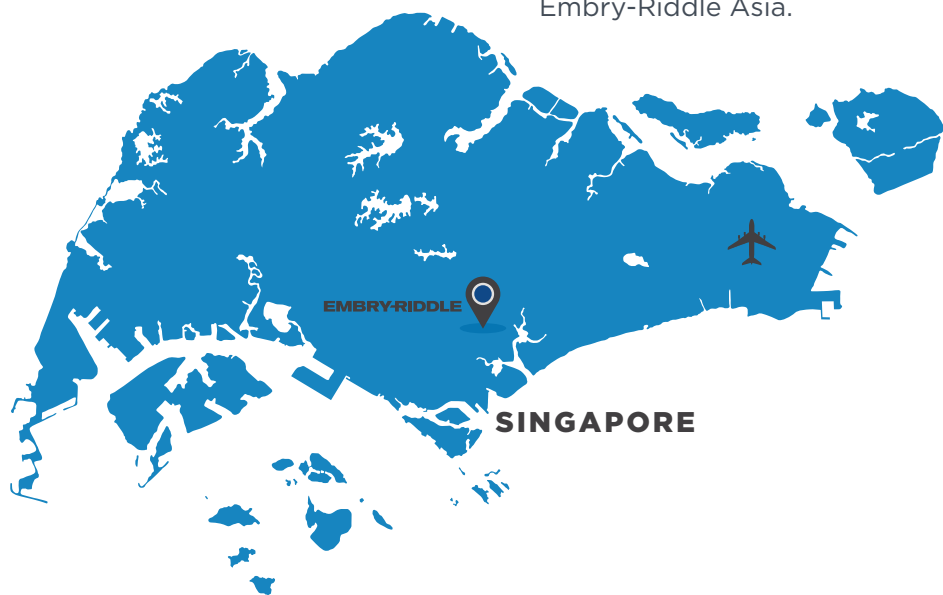
**Visit [asia.erau.edu](http://asia.erau.edu) to see our complete list of Course offerings.**





# A GLOBAL AVIATION HUB

**E**mbry-Riddle Asia found its perfect home in the bustling cosmopolitan city of Singapore. Besides offering a world-class living environment and an exciting collage of cultures, Singapore serves as a key economic and transport hub of the Asian region. China, India, Australia and the Philippines are just a four-hour flight away and several key developing markets are located right at Singapore's doorstep. With the sixth busiest airport and the fourth busiest air cargo hub in Asia, as well as an active aerospace maintenance centre, Singapore boasts a thriving aviation and aerospace industry that will be even further enhanced by the presence of Embry-Riddle Asia.



There are eight airports in the country, and Singapore Changi Airport hosts a network of over 100 airlines connecting Singapore to some 300 cities in about 70 countries and territories worldwide.\*\*



\*\* "About Changi Airport." [www.changiairport.com/](http://www.changiairport.com/) Web.



## Partners

In order to facilitate the delivery of our programmes and degrees, Embry-Riddle Asia has joined forces with some of the premier educational institutions in the region.

### Singapore Aviation Academy

Founded in 1958, the Singapore Aviation Academy (SAA) is the training arm of the Civil Aviation Authority of Singapore (CAAS). Over the years, SAA has established itself as an internationally-recognised aviation training institute, and today, it offers a wide range of operational and management programmes that benchmark international standards and best practices to meet the training needs of the global aviation community. Through its four specialised schools – School of Aviation Management, School of Aviation Safety & Security, School of Air Traffic Services and School of Airport Emergency Services – SAA has trained over 91,000 participants from 200 countries and territories. In 2014, SAA was designated an ICAO Regional Training Centre of Excellence.

**For more information please visit [saa.com.sg](http://saa.com.sg)**

### SIM University

As Singapore's only privately-funded university dedicated to adult learners, SIM University (UniSIM) has a unique place in the tertiary education landscape in Singapore. UniSIM plays an important role of supporting Singapore's economic growth by providing skills and knowledge upgrading pathways for working adults. The university offers more than 50 academic programmes through four schools - School of Arts and Social Sciences, School of Science and Technology, School of Business, and School of Human Development and Social Services – and is dedicated to meeting the higher educational needs of adult learners and developing a high quality workforce in the area.

**For more information please visit [unisim.edu.sg](http://unisim.edu.sg)**

### ERC Institute

ERC Institute (ERCI) was established in 2003 by ERC Holdings (ERC) to provide education with a difference and raise the bar in education services in Singapore. ERCI Holdings was founded by a group of successful Asian entrepreneurs in 1999 to cultivate a strong entrepreneurial culture in Asia. To date, more than 10,000 students have graduated from ERCI. ERCI has produced ideas and leaders that shape the world of business. The Institutes hands on, market-based approach to business education transforms our students into confident, effective, respected business leaders equipped to analyse and solve real world business challenges.

**For more information please visit [erci.edu.sg](http://erci.edu.sg)**



ERC Institute  
UEN No. :200311146N  
20/05/2014 to 19/05/2019





# AN EXPERIENCE BEYOND THE CLASSROOM

**S**ingapore is a cosmopolitan country that attracts many residents from abroad. The country embraces a unique blend of cultures, lifestyles and religions that contributes to an outstanding quality of life. A thriving arts, culture and entertainment scene offers something for everyone. Singapore's warm and sunny climate is perfect for year-round sports and outdoor activities.

Embry-Riddle Asia offers students an experience beyond the classroom. Join a club or get involved in student government. You'll also have the opportunity to interact with other Embry-Riddle students attending our residential campuses in the United States. With a fast growing student body we realise the importance of life both inside and outside of the classroom.

We're actively working to create some of the same student opportunities students attending our residential campuses in the United States enjoy. From clubs and organisations ranging from special interest to athletics along with student trips and community outreach we're building a vibrant student life environment for our growing diverse student body.



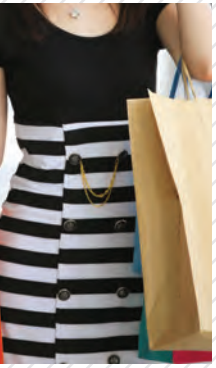
*The knowledge, facts and experience I am acquiring from Embry-Riddle will without a doubt take me closer to dreams in aviation.*

JAGROOP SINGH

Student  
B.S. in Aeronautics







## Popular Destinations in Singapore

**1 Singapore River**  
Three Unique Quays

**8 Joo Chiat/Katong**  
Discover Peranakan Culture

**2 Harbour Front**  
Eat, Shop, Relax, Cruise

**9 Little India**  
Vibrant Culture & Incredible Shopping

**3 Bras Basah.Bugis**  
Arts & Heritage District

**10 Kampong Glam**  
Eclectic Blend of History & Culture

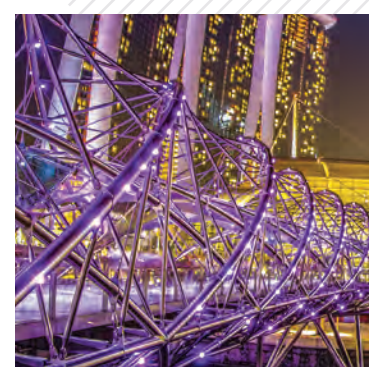
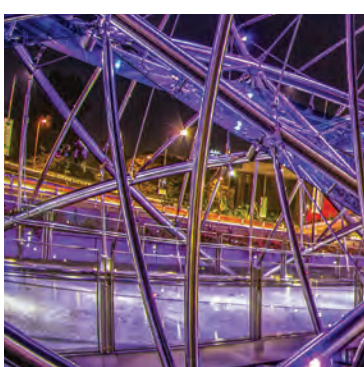
**4 Skape**  
Singapore's Youth Zone

**11 Sentosa**  
Everything from Amusement Parks to Nature

**5 Civic District**  
A Walk Down Memory Lane

**6 Chinatown**  
Immerse Yourself in Culture

**7 Orchard Road**  
A Shopper's Paradise



# BUILT TO BRING OUT THE BEST IN ALL STUDENTS

# E

mbry-Riddle Asia will serve students at all stages of life, from secondary school graduates to experienced working professionals. In order to meet the needs of this diverse audience, we have taken the best aspects of the university's different learning methods and combined them into a single learning platform: blended learning. This innovative method allows students to take courses that combine three distinct learning modes.

## 1 Classroom Learning

In this structured academic setting students experience direct contact with instructors and fellow students on a regular basis.

- ▲ Scheduled class times
- ▲ Classroom attendance
- ▲ Face-to-face interaction
- ▲ Direct collaboration



# 14

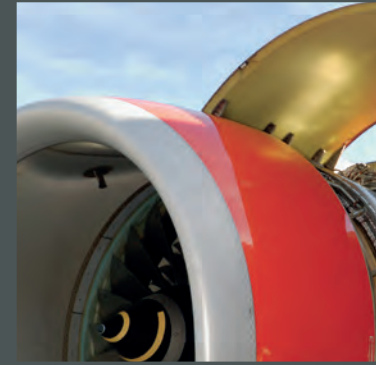


# 2

## Online Learning

Online learning provides maximum convenience and flexibility for students with very busy schedules. Course material is available 24/7, allowing students to access their lessons anywhere, anytime as long as they have an Internet connection. With 12 undergraduate and five graduate start terms throughout the year, it's never too late to start on your path to a degree.

- ▲ Independent and module-based learning
- ▲ Access from any Internet connection
- ▲ Online interaction (non real-time) with students and instructors
  - E-mail
  - Discussion Boards
  - Web-based Activities
- ▲ Lesson archiving



# 3

## EagleVision

EagleVision is a web video conferencing platform that connects geographically distributed classrooms together into one live, real-time virtual classroom. Through EagleVision, students attending class on opposite sides of the world can talk to one another, interact with the same instructor and collaborate on common problems and lessons.

- ▲ Face-to-face interaction with students/instructor in your classroom
- ▲ Real-time, virtual interaction with students/instructors in other classrooms
  - Audio/Video Conferencing
  - Online Chatting
  - Polling
  - Webcasting
- ▲ Lesson archiving



## Apply Today

If you're interested in getting the best aviation education the world has to offer, then apply for your seat at Embry-Riddle Aeronautical University. Seats are limited, and the selection process is competitive, so apply as early as possible.

### Contact Admissions

**OFFICE HOURS:**

Monday-Friday, 9 a.m.-6 p.m.  
Saturday, 10 a.m.-2 p.m.

Phone: +65 6933 9580  
Email: [asia@erau.edu](mailto:asia@erau.edu)



**SANJEEV  
UPADHIAH**

Captain, Tiger Air  
MBAA Graduate

*Embry-Riddle is the only place in the world that could offer me an MBA fine-tuned and tailored to my passion, which is aviation. The Embry-Riddle instructors bring in guest speakers from the industry who do a really good job of sharing what they do in their daily life. That's so important because everything we learn has to apply in real life, eventually. And the learning is tremendous because I get such a wide range of inputs from my classmates—the whole dynamic of aviation, all the components of flight, are represented.*





# Bachelor of Science in Aeronautics

Offered full-time and part-time by ERC Institute (ERCI)

## PROGRAMME OVERVIEW

As Singapore's aeronautics industry continues to grow, so do job opportunities in the field. But just what exactly is aeronautics? Basically, it can be defined as the science of flight. Designing an airplane or other type of flying machine, manufacturing them, operating them, maintaining them. It all falls under aeronautics. That means you could be anything from a scientist to a technician to an engineer or pilot. No matter which type of aeronautics career you want, a good place to start is by getting your Bachelor of Science in Aeronautics (BSA).

Awarded by Embry-Riddle Aeronautical University, offered by ERC Institute (ERCI), the 128 credit hour degree programme offers courses in human factors, security, aviation safety, occupational safety and health, air traffic control, aircraft maintenance and aeronautical science. Several degree minors allow you to tailor your degree to your particular interests and career goals.

### Degree Requirements

To graduate, students must complete 128 credit hours of General Education, Programme Support and Professional Development cores in addition to two minors. Polytechnic diploma holders will be eligible for exemption from some of the courses listed below and in most cases awarded credit for one minor.

COURSE TITLE	CREDITS	COURSE TITLE	CREDITS		
<b>General Education Core</b>		<b>Helicopter Operations and Safety Minor (Online)</b>			
ENGL 123	English Composition	3	ASCI 317	Rotorcraft	3
SPCH 219	Speech	3	ASCI 378	Helicopter Flight Environments	3
ENGL 222	Business Communication	3	ASCI 388	Helicopter Flight Planning	3
HUMN 330	Values and Ethics	3	ASCI 428	Advanced Helicopter Systems and Functions	3
HUMN 400	Science and Aviation/Aerospace Technology in Society	3	ASCI 438	Advanced Helicopter Operations	3
CSCI 109	Introduction to Computers and Applications	3	SFTY 345	Aviation Safety Program Management	3
PHYS 102	Explorations in Physics	3	<b>Security and Intelligence Minor (Online)</b>		
PHYS 142	Introduction to Environmental Science	3	SCTY 315	Studies in Intelligence I	3
MATH 111	College Mathematics for Aviation I	3	SCTY 385	Intelligence Collection & Analysis	3
MATH 112	College Mathematics for Aviation II	3	SCTY 488	National Security Issues and Terrorism	3
ECON 210	Microeconomics	3	SCTY 400	Airport Security	3
ECON 211	Macroeconomics	3	SCTY 415	Studies in Intelligence II	3
<b>Programme Support Core</b>		SCTY 485		Corporate Security	3
ASCI 202	Introduction to Aeronautical Science	3	<b>Transportation Minor (Online)</b>		
ASCI 254	Aviation Legislation	3	TRAN 331	Road and Highway Transportation	3
ASCI 404	Applications in Aviation/Aerospace Law	3	TRAN 341	Railroad Operations	3
MATH 222	Business Statistics	3	TRAN 351	Urban Transportation and City Planning	3
MGMT 201	Principles of Management	3	TRAN 361	Marine Transportation	3
MGMT 221	Introduction to Management Information Systems	3	TRAN 371	Pipelines, Land Use, and the Environment	3
RSCH 202	Introduction to Research Methods	3	TRAN 401	Transportation and the Environment	3
SFTY 335	Mechanical and Structural Factors in Aviation Safety	3	<b>Aviation Maintenance Minor (Online)</b>		
<b>Professional Development Core</b>		ASCI 322		Aircraft Inspection and Scheduled Maintenance Programs	3
ASCI 309	Aerodynamics	3	ASCI 327	Aviation Work Force Management in a Global Environment	3
ASCI 490	Aeronautical Science Capstone Course	3	ASCI 419	Aviation Maintenance Management: A Global Perspective	3
MGMT 436	Strategic Management	3	ASCI 424	Maintenance Repair and Overhaul in Aviation	3
SFTY 409	Aviation Safety	3	ASCI 429	Advanced Tech. in Design and Production of Aircraft Structures & Systems	3
<b>Aviation Area of Concentration</b>		ASCI 433		Aviation Logistics and Supply Chain Management	3
ASCI 401	Airport Development and Operations	3	<i>Foundation Courses (only required by placement exam results)</i>		
SFTY 435	Aircraft Crash Survival Analysis and Design	3	GNED 103	Basic Mathematics & Trigonometry	1
BSAB 410	Management of Air Cargo	3	GNED 104	Basic English	1
SFTY 320	Human Factors in Aviation Safety	3	MATH 106	Basic Algebra	3
<i>Student are required to choose two minors from the options below:</i>		ENGL 106		Introduction to Composition	3
<b>Unmanned Aerial Systems Minor (Online)</b>		<b>TOTAL DEGREE REQUIREMENTS</b>		<b>128</b>	
ASCI 315	Unmanned Aerial Systems and Operations	3	<i>Note: Embry-Riddle Aeronautical University reserves the right to make changes to the course offerings and course content at any time, in accordance with Embry-Riddle academic processes and CPE notification requirements.</i>		
ASCI 316	Operations and Business Aspects of Unmanned Aerial Systems	3			
ASCI 318	Unmanned Aerial Systems Robotics	3			
ASCI 410	Unmanned Sensing Systems	3			
SFTY 410	Design of Engineering Hazard Controls	3			
SFTY 440	System Safety Management	3			

# ADMISSION TO THE PROGRAMME

## Requirements

### Polytechnic Students:

- ▲ Official copies of your polytechnic transcripts. In order for these documents to be considered official you must request an original copy from your polytechnic institution.
- ▲ Copy of your polytechnic diploma.
- ▲ Copy of our O/A level examination results

### O/A Level Students:

- ▲ Official copies of your General Certificate of Education Ordinary and if applicable your Advanced level results. In order for these documents to be considered official, you must present to Embry-Riddle Aeronautical University the original certificates so that an official copy can be made. Students who have taken "A" level examinations are eligible for exemptions based on the subjects they've taken and the grades received.

Additional information on these exemptions can be found at [asia.erau.edu](http://asia.erau.edu)

### International Students

Embry-Riddle Aeronautical University requires that all international students meet the university minimum requirements for admission. These requirements vary from country to country and each application to Embry-Riddle Aeronautical University is reviewed on an individual case-by-case basis.

Students studying in the International Baccalaureate (IB) Diploma are eligible for exemptions based on the subjects they've taken and the grades received.

Students who have taken "A" level examinations are eligible for exemptions based on the subjects they've taken and the grades received.

Additional information on IB and "A" level exemptions can be found at [asia.erau.edu](http://asia.erau.edu)

Applicants for whom English is not the primary language must either:

- ▲ Attain a minimum score on the Test of English as a Foreign Language (TOEFL) of 550 (paper-based) or 79 (Internet-based).
- ▲ Attain a minimum score on the International English Language Testing System (IELTS) of 6.0.
- ▲ Earn transferable credit for a course that is the equivalent of ENGL 123 (English Composition) at an accredited postsecondary institution.
- ▲ Show evidence of attendance and graduation from a secondary school in which the language of instruction was English.

International students should visit Singapore's Immigration and Checkpoints Authority (ICA) FAQ website for information on the issuance of a student pass/student visa. All student pass requirements will be shared with students when an admission decision is made by the university.

Official/Attested copies of documents listed above should be mailed to Embry-Riddle Aeronautical University, Office of Enrollment Management, 75 Bukit Timah Road, #02-01 Boon Siew Building, Singapore 229833. Alternatively, students may make an appointment to bring original documents in so that an official copy can be made.

**Only upon submission of the documents listed above will the University be able to process your application.**

## Procedure

Applications for the Bachelor of Science in Aeronautics programme must be made online at [asia.erau.edu](http://asia.erau.edu). Incomplete applications will not be considered.

## Programme Delivery

Embry-Riddle Aeronautical University offers the Bachelor of Science in Aeronautics (BSA) through our newly formed partnership with ERC Institute. The ERC Institute partnership provides us with the ability to host students in a full-time or part-time classroom environment. The Embry-Riddle Aeronautical University BSA programme in Singapore is the same programme offered in the United States, Europe and online, with enhancements to satisfy the unique demands of aviation professionals in Singapore and the surrounding regions.

### Full-Time (courses conducted during the day)

Students pursuing the BSA degree programme at a full-time pace will take 3 courses each term. The 128 credit hour BSA degree is designed to be completed in 3.5 years. However, diploma and/or "A" level holders are eligible for a significant number of course exemptions and can expect to complete the degree programme in as little as 2 years.

### Part-Time (courses conducted during the evening)

Students pursuing the BSA degree programme at a part-time pace will take 2 courses each term. The full 128 credit hour BSABA degree is designed to be completed in 5 years at a part-time pace. However, diploma and/or "A" level holders are eligible for a significant number of course exemptions and can expect to complete the degree programme in as little as 3 years. Part-time students also have the option of accelerating completion of the degree by taking some courses entirely online.

## Intake

Our primary intakes for the BSA degree programme are in January and July of each year; however students can also choose to start in March and October. A member of the Enrollment Management team can help you decide which start term works best for you.

## Tuition, Scholarships & Grants

Visit [asia.erau.edu](http://asia.erau.edu) for the latest information on programme tuition, scholarships & grants.





# Bachelor of Science in Aviation Business Administration

Offered full-time and part-time by ERC Institute (ERCI)

## PROGRAMME OVERVIEW

Singapore's aviation industry is booming, and you can be a part of it. So, what exactly is the aviation industry? It can be summed up as the design, development, production, operation, maintenance and use of aircrafts – basically, the companies involved in air transport. Within the aviation industry, you can take your career in many directions.

Working in the business sector of the field, you could be an airport or airline manager, an aircraft salesperson, an airline customer service representative or other challenging roles that require a combined knowledge of business acumen and aviation. A Bachelor of Science in Aviation Business Administration (BSABA) is the first step to getting there.

Awarded by Embry-Riddle Aeronautical University, offered by ERC Institute (ERCI), the 128 credit hour BSABA degree programme provides you with a well-rounded business foundation spanning economics, aeronautical science, accounting, marketing, management and global business strategies.

### Degree Requirements

To graduate, students must complete 128 credit hours of General Education, Aviation Business Support and Aviation Management core studies at Embry-Riddle. Polytechnic diploma holders will be eligible for exemption from some of the courses listed below.

COURSE TITLE	CREDITS	COURSE TITLE	CREDITS
<b>General Education Core</b>		<b>Aviation Management Core</b>	
ENGL 123 English Composition	3	BSAB 410 Management of Air Cargo	3
SPCH 219 Speech	3	MGMT 311 Marketing	3
ENGL 222 Business Communication	3	BSAB 412 Airport Planning and Design	3
HUMN 330 Values and Ethics	3	BSAB 415 Airline Management	3
HUMN 400 Science and Aviation/Aerospace Technology in Society	3	BSAB 418 Airport Administration and Finance	3
CSCI 109 Introduction to Computers and Applications	3	BSAB 426 International Aviation Management	3
PHYS 102 Explorations in Physics	3	MGMT 394 Information Security Management	3
PHYS 142 Introduction to Environmental Science	3	BSAB 450 Airline/Airport Marketing	3
MATH 111 College Mathematics for Aviation I	3	MGMT 317 Organizational Behavior	3
MATH 112 College Mathematics for Aviation II	3	MGMT 320 Business Information Systems	3
ECON 210 Microeconomics	3	MGMT 322 Aviation Insurance	3
ECON 211 Macroeconomics	3	MGMT 331 Transportation Principles	3
<b>Aviation Business Support Core</b>		MGMT 335 International Business	3
MGMT 203 Introduction to Aeronautical Science	3	<i>Foundation Courses (only required by placement exam results)</i>	
MATH 222 Business Statistics	3	GNED 103 Basic Mathematics & Trigonometry	1
MGMT 201 Principles of Management	3	GNED 104 Basic English	1
MGMT 221 Introduction to Management Information Systems	3	MATH 106 Basic Algebra	3
RSCH 202 Introduction to Research Methods	3	ENGL 106 Introduction to Composition	3
MGMT 312 Managerial Accounting	3	<b>TOTAL DEGREE REQUIREMENTS</b>	<b>128</b>
MGMT 314 Human Resource Management	3	<i>Note: Embry-Riddle Aeronautical University reserves the right to make changes to the course offerings and course content at any time, in accordance with Embry-Riddle academic processes and CPE notification requirements.</i>	
MGMT 321 Aviation/Aerospace Systems Analysis Methods	3		
MGMT 420 Management of Production and Operations	3		
MGMT 371 Leadership	3		
MGMT 390 Business Law	3		
MGMT 408 Airport Management	3		
MGMT 411 Logistics Management for Aviation/Aerospace	3		
MGMT 424 Project Management in Aviation Operations	3		
MGMT 436 Strategic Management	3		

Especially designed for students who wish to lead and manage in the aviation world, the BSABA programme offers:

- ▲ A solid foundation of business-focused industry expertise
- ▲ Leadership skills
- ▲ A look at understanding how to balance the organisation using concepts of organisational theory and design
- ▲ The skills needed to conduct business transactions and simulate the impact of those decisions on an organisation's bottom line
- ▲ The benefit of learning from faculty who are experienced industry professionals themselves

# ADMISSION TO THE PROGRAMME

## Requirements

### Polytechnic Students:

- ▲ Official copies of your polytechnic transcripts. In order for these documents to be considered official you must request an original copy from your polytechnic institution.
- ▲ Copy of your polytechnic diploma.
- ▲ Copy of our O/A level examination results

### O/A Level Students:

- ▲ Official copies of your General Certificate of Education Ordinary and if applicable your Advanced level results. In order for these documents to be considered official, you must present to Embry-Riddle Aeronautical University the original certificates so that an official copy can be made. Students who have taken "A" level examinations are eligible for exemptions based on the subjects they've taken and the grades received.

Additional information on these exemptions can be found at [asia.erau.edu](http://asia.erau.edu)

### International Students

Embry-Riddle Aeronautical University requires that all international students meet the university minimum requirements for admission. These requirements vary from country to country and each application to Embry-Riddle Aeronautical University is reviewed on an individual case-by-case basis.

Students studying in the International Baccalaureate (IB) Diploma are eligible for exemptions based on the subjects they've taken and the grades received.

Students who have taken "A" level examinations are eligible for exemptions based on the subjects they've taken and the grades received.

Applicants for whom English is not the primary language must either:

- ▲ Attain a minimum score on the Test of English as a Foreign Language (TOEFL) of 550 (paper-based) or 79 (Internet-based).
- ▲ Attain a minimum score on the International English Language Testing System (IELTS) of 6.0.
- ▲ Earn transferable credit for a course that is the equivalent of ENGL 123 (English Composition) at an accredited postsecondary institution.
- ▲ Show evidence of attendance and graduation from a secondary school in which the language of instruction was English.

International students should visit Singapore's Immigration and Checkpoints Authority (ICA) FAQ website for information on the issuance of a student pass/student visa. All student pass requirements will be shared with students when an admission decision is made by the university.

Official/Attested copies of documents listed above should be mailed to Embry-Riddle Aeronautical University, Office of Enrollment Management, 75 Bukit Timah Road, #02-01 Boon Siew Building, Singapore 229833. Alternatively, students may make an appointment to bring original documents in so that an official copy can be made.

**Only upon submission of the documents listed above will the University be able to process your application.**



## Procedure

Applications for the Bachelor of Science in Aviation Business Administration programme must be made online at [asia.erau.edu](http://asia.erau.edu). Incomplete applications will not be considered.

## Programme Delivery

Embry-Riddle Aeronautical University offers the Bachelor of Science in Aviation Business Administration (BSABA) through our newly formed partnership with ERC Institute. The ERC Institute partnership provides us with the ability to host students in a full-time or part-time classroom environment. The Embry-Riddle Aeronautical University BSABA programme in Singapore is the same programme offered in the United States, Europe and online, with enhancements to satisfy the unique demands of aviation management professionals in Singapore and the surrounding region.

### Full-Time (courses conducted during the day)

Students pursuing the BSABA degree programme at a full-time pace will take 3 courses each term. The 128 credit hour BSABA degree is designed to be completed in 3.5 years. However, diploma and/or "A" level holders are eligible for a significant number of course exemptions and can expect to complete the degree programme in as little as 2 years.

### Part-Time (courses conducted during the evening)

Students pursuing the BSABA degree programme at a part-time pace will take 2 courses each term. The full 128 credit hour BSABA degree is designed to be completed in 5 years at a part-time pace. However, diploma and/or "A" level holders are eligible for a significant number of course exemptions and can expect to complete the degree programme in as little as 3 years. Part-time students also have the option of accelerating completion of the degree by taking some courses entirely online.

## Intake

Our primary intakes for the BSABA degree programme are in January and July of each year; however students can also choose to start in March and October. A member of the Enrollment Management team can help you decide which start term works best for you.

## Tuition, Scholarships & Grants

Visit [asia.erau.edu](http://asia.erau.edu) for the latest information on programme tuition, scholarships & grants.



# Master of Business Administration in Aviation

Offered full-time by ERC Institute (ERCI)

## PROGRAMME OVERVIEW

An MBA is a scientific approach to management. It is an advanced business degree that provides a foundation in various business sectors including accounting, finance, marketing, operations management and human resources. Similar to an MBA, a Master of Business Administration in Aviation (MBAA) offers a comprehensive look inside the business world but from an aviation and aerospace perspective—looking at real industry problems.

Awarded by Embry-Riddle Aeronautical University, offered by ERC Institute (ERCI), the 36 credit hour MBAA programme is especially suited for degree holders who want to gain a competitive edge.

### Upon completion of the MBAA programme, students emerge with:

- ▲ A better understanding of modern management concepts, methods and tools within an aviation context
- ▲ The ability to manage the efficient and effective use of scarce resources
- ▲ An understanding of how to operate in an atmosphere of heightened national and international competition
- ▲ The skill set needed to become a leader or decision-maker in the aviation field

This full-time programme is offered in an intimate classroom setting where you get one-on-one attention from faculty members and the chance to interact with and learn from fellow students. This is an accelerated full-time MBA in Aviation designed to be completed in just one year.

### Degree Requirements

To graduate, students must complete 36 credit hours of General Education, Programme Support and Professional Development cores in addition to two minors.

Complete the following courses. Some courses listed below may not be available in any given year. The final list for any cohort must be approved by the MBAA Programme Chair.

COURSE TITLE	CREDITS
<b>Aviation Business Core</b>	
MBAA 514 Strategic Marketing Management in Aviation	3
MBAA 517 Managerial Accounting for Decision Making	3
MBAA 518 Managerial Finance	3
MBAA 523 Advanced Aviation Economics	3
<b>Aviation Business Specialisation</b>	
MBAA 604 International Business Administration	3
MGMT 651 Production and Procurement in the Aviation and Aerospace Industry	3
LGMT 685 Global Logistics and Supply Chain Management	3
ASCI 646 Airline Operations and Management	3
ASCI 645 Airport Operations and Management	3
ASCI 604 Human Factors in the Aviation/Aerospace Industry	3
<b>Research/Capstone Core</b>	
MBAA 522 Business Research Methods	3
MBAA 635 Business Capstone Course	3
Total Research/ Capstone Credits	6
<b>TOTAL DEGREE REQUIREMENTS</b>	<b>36</b>

*Note: Embry-Riddle Aeronautical University reserves the right to make changes to the course offerings and course content at any time, in accordance with academic processes and CPE notification requirements.*

As the aviation and aerospace industries strive for efficiency and effectiveness, there is an increased demand for professionals — leaders who know what it takes to optimise fiscal performance, maximise resources, and withstand increased competition. Graduates of these programmes at ERAU emerge with the skills necessary to contribute positively in this global economy.

### Individuals who possess MBA's have careers in:

- ▲ Administration
- ▲ Airport Management
- ▲ Aviation Regulation Consulting
- ▲ Banking
- ▲ Business Operations
- ▲ Business Analysis
- ▲ Corporate Training
- ▲ Financial Analysis
- ▲ Ground Support Services
- ▲ Insurance Underwriting
- ▲ Logistics
- ▲ Management
- ▲ Operations
- ▲ Procurement
- ▲ Programme/Project Management
- ▲ Sales and Marketing

# ADMISSION TO THE PROGRAMME

## Requirements

All Master of Business Administration in Aviation (MBAA) applicants must have earned a baccalaureate degree from an accredited degree-granting institution with a cumulative grade point average (CGPA) of 2.5 or higher on a 4.0 scale. Applicants who already possess a master's degree or have completed graduate coursework from an accredited degree granting institution must also have a 3.0 CGPA or higher at the graduate level.

Applicants must submit official transcripts from all accredited institutions showing degree completion or courses attempted. Official or unofficial transcripts may be requested to verify prerequisite knowledge.

## Prerequisites

Prerequisite knowledge is considered in the following areas when making an admission decision:

- ▲ Management
- ▲ Marketing
- ▲ Finance
- ▲ Economics
- ▲ Accounting Methods
- ▲ Quantitative Methods

Students should assume responsibility to ensure the above prerequisite knowledge requirements are satisfied through one of the following methods:

- ▲ Present evidence of successful completion of an undergraduate or graduate course in each of the subject areas.
- ▲ Receive at least the recommended score on the Graduate Management Admissions Test (GMAT). School Code: OMX-68-90.
- ▲ Satisfactorily complete the required six business foundations courses offered by Embry-Riddle Asia. Prerequisite courses can be taken while pursuing the MBAA programme provided the foundation course is completed satisfactorily prior to the MBAA course requiring the prerequisite. Students do not need to take all six foundation courses before joining the MBAA degree programme.

## Applicants for whom English is not the primary language must either:

- ▲ Attain a minimum score on the Test of English as a Foreign Language (TOEFL) of 550 (paper-based) or 79 (Internet-based).
- ▲ Attain a minimum score on the International English Language Testing System (IELTS) of 6.0.
- ▲ Earn transferable credit for a course that is the equivalent of ENGL 123 (English Composition) at an accredited postsecondary institution.
- ▲ Display evidence of attendance and graduation from a secondary school in which the language of instruction was English.

Applicants must submit a statement of purpose and successfully complete an admissions interview with the College of Business Administration chair and admissions committee.

## To apply for the MBAA programme:

- ▲ **Step 1:** To be considered for admission, applicants must apply online at [asia.erau.edu](http://asia.erau.edu), pay the SGD 50 application fee and submit all required documentation before the deadline.
- ▲ **Step 2:** The University will process the application and supporting documentation and inform the applicant if the basic requirements have been met in order to proceed to the admissions interview stage.
- ▲ **Step 3:** Upon admission, the University will issue the acceptance letter and further enrollment instructions.

**For questions about the application process, contact an Enrollment Advisor at +65 6933 9580 or [asia@erau.edu](mailto:asia@erau.edu).**

## Intake

### Full-Time (courses conducted during the day)

Students pursuing the MBAA degree programme at a full-time pace will take 3 courses each term. The 36 credit hour MBAA degree is designed to be completed in just one year.

The full-time MBAA currently has a planned intake in July of each year. Additional intakes are being considered.

## Tuition, Scholarships & Grants

Visit [asia.erau.edu](http://asia.erau.edu) for the latest information on programme tuition, scholarships & grants.

Future leaders and decision-makers in the field of aviation need more than experience to rise to the top. Education is key. A Master of Business Administration in Aviation is an important component for those who aspire to a bright future in aviation management.





# Master of Aeronautical Science

Offered part-time in collaboration with the Singapore Aviation Academy (SAA)

## PROGRAMME OVERVIEW

Air traffic control personnel, flight crew members, flight operations specialists and technical representatives within the aviation and aerospace industry require a technical skill set. Whether you already work in one of these roles or you aspire to, a Master of Aeronautical Science (MAS) may help you reach your goals.

Offered jointly by Embry-Riddle Aeronautical University and the Singapore Aviation Academy (SAA), the 36 credit hour MAS degree programme is similar to the Master of Business Administration in Aviation degree but with less of a business and management focus, and more of a technical, operations and safety oriented focus. As some courses are highly technical, more aviation background is needed.

### Degree Requirements

To graduate, students must complete 36 credit hours of the Aeronautics and Research Cores in addition to choosing one specialisation.

COURSE TITLE	CREDITS	COURSE TITLE	CREDITS
<b>Aeronautics Core</b>			
ASCI 602	3	The Air Transportation Industry	
ASCI 604	3	Human Factors in the Aviation/Aerospace Industry	
ASCI 623	3	Aircraft Design and Development	
ASCI 609	3	Aircraft Maintenance Management	
ASCI 612	3	Aviation/Aerospace Industrial Safety Management	
<b>Research Core</b>			
RSCH 665	3	Statistical Analysis	
RSCH 670	3	Research Methods	
ASCI 623	3	Aircraft Design and Development	
<b>Students must choose one of the six following specialisations:</b>			
<b>Aeronautics</b>			
<i>Students must complete 12 credit hours from the following list of courses</i>			
ASCI 509	3	Advanced Aerodynamics	
ASCI 515	3	Aviation-Aerospace Simulation Systems	
ASCI 516	3	Applications in Crew Resource Management	
ASCI 517	3	Advanced Meteorology	
ASCI 560	3	Advanced Rotorcraft Operations	
ASCI 603	3	Aircraft and Spacecraft Development	
<b>Aviation/Aerospace Education Technology</b>			
<i>Students must complete 12 credit hours from the following list of courses</i>			
ASCI 514	3	Computer Based Instruction	
ASCI 515	3	Aviation/Aerospace Simulation Systems	
ASCI 550	3	Aviation Education Foundations	
ASCI 614	3	Advanced Aviation/Aerospace Curriculum Development	
ASCI 663	3	Memory and Cognition	
<b>Aviation/Aerospace Operations</b>			
<i>Students must complete 12 credit hours from the following list of courses</i>			
ASCI 515	3	Aviation/Aerospace Simulation Systems	
ASCI 560	3	Advanced Rotorcraft Operations	
ASCI 603	3	Aircraft and Spacecraft Development	
ASCI 606	3	Air Traffic Control and the National Airspace System	
ASCI 617	3	Airport Safety and Certification	
ASCI 620	3	Air Carrier Operations	
ASCI 622	3	Corporate Aviation Operations	
ASCI 623	3	Aircraft Design and Development	
<b>Aviation/Aerospace Safety Systems</b>			
<i>Students must complete 12 credit hours from the following list of courses</i>			
ASCI 611	3	Aviation/Aerospace System Safety	
ASCI 612	3	Aviation/Aerospace Industrial Safety Management	
ASCI 615	3	Aviation/Aerospace Accident Investigation and Analysis	
ASCI 616	3	Transportation Security	
ASCI 617	3	Airport Safety and Certification	
ASCI 618	3	Aviation/Aerospace Safety Program Management	
ASCI 634	3	Aviation/Aerospace Psychology	
<b>Human Factors In Aviation Systems</b>			
<i>Students must complete 12 credit hours from the following list of courses</i>			
ASCI 513	3	Space Habitation and Life Support Systems	
ASCI 516	3	Applications in Crew Resource Management	
ASCI 634	3	Aviation/Aerospace Psychology	
ASCI 660	3	Sensation and Perception	
ASCI 663	3	Memory and Cognition	
<b>Unmanned Aircraft Systems</b>			
<i>Students must complete 12 credit hours from the following list of courses</i>			
ASCI 530	3	Unmanned Aerospace Systems	
ASCI 531	3	Robotics and Control	
ASCI 637	3	Unmanned Aerospace Systems Operations and Payloads	
ASCI 638	3	Human Factors in Unmanned Aerospace Systems	
<b>TOTAL DEGREE REQUIREMENTS</b>			<b>36</b>

**Note:** Embry-Riddle Aeronautical University reserves the right to make changes to the course offerings and course content at any time, in accordance with Embry-Riddle academic processes.

### MAS programme highlights:

- ▲ Combines solid core classes with unique specialisations targeting the Asian aviation and aerospace industry.
- ▲ Learn the tools needed to develop, manufacture and operate aircraft and spacecraft.
- ▲ Gain a comprehensive understanding of the infrastructure that supports the industry.
- ▲ Concentrations in Aeronautics, Safety Systems, Education Technology, Operations, Human Factors in Aviation Systems and Unmanned Aircraft Systems.

# ADMISSION TO THE PROGRAMME

## Requirements

All Master of Aeronautical Science (MAS) applicants must have earned a baccalaureate degree from an accredited degree-granting institution with a cumulative grade point average (CGPA) of 2.5 or higher on a 4.0 scale. Applicants who already possess a master's degree or have completed graduate coursework from an accredited degree-granting institution must also have a 3.0 CGPA or higher at the graduate level.

Applicants must submit official transcripts from all accredited institutions showing degree completion or courses attempted. Official or unofficial transcripts may be requested to verify prerequisite knowledge.

### Applicants for whom English is not the primary language must either:

- ▲ Attain a minimum score on the Test of English as a Foreign Language (TOEFL) of 550 (paper-based) or 79 (Internet-based).
- ▲ Attain a minimum score on the International English Language Testing System (IELTS) of 6.0.
- ▲ Earn transferable credit for a course that is the equivalent of ENGL 123 (English Composition) at an accredited postsecondary institution.
- ▲ Show evidence of attendance and graduation from a secondary school in which the language of instruction was English.
- ▲ Applicants must submit a statement of purpose and successfully complete an admissions interview with the College of Aeronautics chair and admissions committee.

### To apply for the MAS programme:

- ▲ **Step 1:** To be considered for admission, applicants must apply online at [asia.erau.edu](http://asia.erau.edu), pay the SGD 50 application fee and submit all required documentation before the deadline.
- ▲ **Step 2:** The University will process the application and supporting documentation and inform the applicant if the basic requirements have been met in order to proceed to the admissions interview stage.
- ▲ **Step 3:** Upon admission, the University will issue the acceptance letter and further enrollment instructions.

**For questions about the application process, contact an Enrollment Advisor at +65 6933 9580 or [asia@erau.edu](mailto:asia@erau.edu).**

In today's global workplace, a graduate-level education is becoming more and more critical in order to reach the upper levels of management. An advanced degree from Embry-Riddle Aeronautical University can help broaden your knowledge and diversify your talents in the field of aviation.

## Programme Delivery

Students can start the MAS degree programme in January, June or August. The first four terms will take place in our blended delivery combining classroom instruction during the first 2 weeks of the term with the convenience of online instruction during the remaining 7 weeks. The fifth and sixth terms allow students to begin work on their Graduate Research Project while also choosing two elective courses to be taken online. Students can expect to graduate 24 months after they start the MAS degree programme.

This programme is offered in blended delivery modes so that you can continue working full time through your enrollment. We merge the convenience of night and weekend courses with diverse learning modes:

- ▲ In-classroom
- ▲ EagleVision Classroom (Web video conferencing between classrooms)
- ▲ Online (from anywhere with an Internet connection)

## Tuition, Scholarships & Grants

Visit [asia.erau.edu](http://asia.erau.edu) for the latest information on programme tuition, scholarships & grants.

Most terms begin with two five-day classroom sessions at the SAA and continue with online interaction between students and the instructor. The programme is designed to be completed in six terms spanning 24 months.





# Master of Business Administration in Aviation

Offered part-time in collaboration with the Singapore Aviation Academy (SAA)

## PROGRAMME OVERVIEW

An MBA is a scientific approach to management. It is an advanced business degree that provides a foundation in various business sectors including accounting, finance, marketing, operations management and human resources. Similar to an MBA, a Master of Business Administration in Aviation (MBAA) offers a comprehensive look inside the business world but from an aviation and aerospace perspective—looking at real industry problems.

Offered jointly by Embry-Riddle Aeronautical University and the Singapore Aviation Academy (SAA), the 36 credit hour MBAA programme is especially suited for working professionals who want to gain a competitive edge. Classes are limited to 25 students, to ensure you get the attention you need.

### Upon completion of the MBAA programme, students emerge with:

- ▲ A better understanding of modern management concepts, methods and tools within an aviation context
- ▲ The ability to manage the efficient and effective use of scarce resources
- ▲ An understanding of how to operate in an atmosphere of heightened national and international competition
- ▲ The skill set needed to become a leader or decision-maker in the aviation field

Most terms begin with two five-day classroom sessions at SAA and continue with online interaction between students and the instructor. The programme is designed to be completed in six terms spanning 24 months.

### Degree Requirements

To graduate, students must complete 36 credit hours of General Education, Programme Support and Professional Development cores in addition to two minors.

Complete the following courses. Some courses listed below may not be available in any given year. The final list for any cohort must be approved by the MBAA Programme Chair.

COURSE	TITLE	CREDITS
<b>Aviation Business Core</b>		
MGMT 524	Management Science	3
MBAA 514	Strategic Marketing Management in Aviation	3
MBAA 517	Managerial Accounting for Decision Making	3
MBAA 518	Managerial Finance	3
MBAA 523	Advanced Aviation Economics	3
<b>Research/Capstone Core</b>		
MBAA 522	Business Research Methods	3
MBAA 691	Graduate Aviation Research Project Proposal	3
MBAA 692	Graduate Aviation Research Study	3
MBAA 635	Business Capstone Course	3
<b>Aviation Business Specialisation</b>		
LGMT 685	Global Logistics and Supply Chain Management	3
MGMT 651	Production and Procurement in Aviation and Aerospace Industries	3
	Elective Course*	3
<b>TOTAL DEGREE REQUIREMENTS</b>		<b>36</b>

*Note: Embry-Riddle Aeronautical University reserves the right to make changes to the course offerings and course content at any time, in accordance with Embry-Riddle academic processes.*

As the aviation and aerospace industries strive for efficiency and effectiveness, there is an increased demand for professionals — leaders who know what it takes to optimise fiscal performance, maximise resources, and withstand increased competition. Graduates of these programmes at ERAU emerge with the skills necessary to contribute positively in this global economy.

### Individuals who possess MBA's have careers in:

- ▲ Administration
- ▲ Airport Management
- ▲ Aviation Regulation Consulting
- ▲ Banking
- ▲ Business Operations
- ▲ Business Analysis
- ▲ Corporate Training
- ▲ Financial Analysis
- ▲ Ground Support Services
- ▲ Insurance Underwriting
- ▲ Logistics
- ▲ Management
- ▲ Operations
- ▲ Procurement
- ▲ Programme/Project Management
- ▲ Sales and Marketing

# ADMISSION TO THE PROGRAMME

## Requirements

All Master of Business Administration in Aviation (MBAA) applicants must have earned a baccalaureate degree from an accredited degree-granting institution with a cumulative grade point average (CGPA) of 2.5 or higher on a 4.0 scale. Applicants who already possess a master's degree or have completed graduate coursework from an accredited degree granting institution must also have a 3.0 CGPA or higher at the graduate level.

Applicants must submit official transcripts from all accredited institutions showing degree completion or courses attempted. Official or unofficial transcripts may be requested to verify prerequisite knowledge.

## Prerequisites

Prerequisite knowledge is considered in the following areas when making an admission decision:

- ▲ Management
- ▲ Marketing
- ▲ Finance
- ▲ Economics
- ▲ Accounting Methods
- ▲ Quantitative Methods

Students should assume responsibility to ensure the above prerequisite knowledge requirements are satisfied through one of the following methods:

- ▲ Present evidence of successful completion of an undergraduate or graduate course in each of the subject areas.
- ▲ Receive at least the recommended score on the Graduate Management Admissions Test (GMAT). School Code: OMX-68-90.
- ▲ Satisfactorily complete the required six business foundations courses offered by Embry-Riddle Asia. Prerequisite courses can be taken while pursuing the MBAA programme provided the foundation course is completed satisfactorily prior to the MBAA course requiring the prerequisite. Students do not need to take all six foundation courses before joining the MBAA degree programme.

## Applicants for whom English is not the primary language must either:

- ▲ Attain a minimum score on the Test of English as a Foreign Language (TOEFL) of 550 (paper-based) or 79 (Internet-based).
- ▲ Attain a minimum score on the International English Language Testing System (IELTS) of 6.0.
- ▲ Earn transferable credit for a course that is the equivalent of ENGL 123 (English Composition) at an accredited postsecondary institution.
- ▲ Show evidence of attendance and graduation from a secondary school in which the language of instruction was English.
- ▲ Applicants must submit a statement of purpose and successfully complete an admissions interview with the College of Aeronautics chair and admissions committee.

## To apply for the MBAA programme:

- ▲ **Step 1:** To be considered for admission, applicants must apply online at [asia.erau.edu](http://asia.erau.edu), pay the SGD 50 application fee and submit all required documentation before the deadline.
- ▲ **Step 2:** The University will process the application and supporting documentation and inform the applicant if the basic requirements have been met in order to proceed to the admissions interview stage.
- ▲ **Step 3:** Upon admission, the University will issue the acceptance letter and further enrollment instructions.

**For questions about the application process, contact an Enrollment Advisor at +65 6933 9580 or [asia@erau.edu](mailto:asia@erau.edu).**

## Programme Delivery

Students can start the MBAA degree programme in January, June or August. The first four terms will take place in our blended delivery combining classroom instruction during the first 2 weeks of the term with the convenience of online instruction during the remaining 7 weeks. The fifth and sixth terms allow students to begin work on their Graduate Research Project while also choosing an elective course to be taken online. Students can expect to graduate 24 months after they start the MBAA degree programme.

This programme is offered in blended delivery modes so that you can continue working full time through your enrollment. We merge the convenience of night and weekend courses with diverse learning modes:

- ▲ In-classroom
- ▲ EagleVision Classroom (Web video conferencing between classrooms)
- ▲ Online (from anywhere with an Internet connection)

## Tuition, Scholarships & Grants

Visit [asia.erau.edu](http://asia.erau.edu) for the latest information on programme tuition, scholarships & grants.

Future leaders and decision-makers in the field of aviation need more than experience to rise to the top. Education is key. A Master of Business Administration in Aviation is an important component for those who aspire to a bright future in aviation management.



# Ph.D. in Aviation

A specialised programme for distinguished learning, delivered in partnership with the Singapore Aviation Academy

## PROGRAMME OVERVIEW

You've earned your bachelor's and master's degrees, but you desire more. To take your education to an even higher level, Embry-Riddle offers a Ph.D. in Aviation. The first Ph.D. in aviation offered in the United States, this innovative programme is designed to prepare students like you with cognitive research skills necessary to solve acute problems facing the field of aviation and advance the discipline.

Through the Ph.D. programme, aviation professionals get the chance to pursue the discipline in a diverse, intellectually versatile, multidisciplinary environment.

Embry-Riddle Aeronautical University offers this programme primarily online with the inclusion of three six-day residencies in partnership with the Singapore Aviation Academy. This way, you can continue working while you earn your degree.

The Ph.D. programme is open to aviation professionals who include flight crew members, air traffic controllers, industry technical representatives, aviation educators, government employees and others wishing to advance their knowledge and enhance their careers.

### Degree Requirements

Students are expected to take 2 courses per term, 3 terms per year, or 6 courses per year. The Ph.D. in Aviation programme's 60 credit hours consist of the following:

- Four research method courses of three credits each (12 credit hours total)
- Eight courses of three credits each making up one of three specialisations (24 credit hours total)
- At least three residency courses of two credits each (6 credit hours total)
- At least six dissertation courses of three credits each (18 credit hours total)

#### COURSE TITLE CREDITS

##### Core Courses — Group A (must take all four courses):

Students must take at least 36 credits from the following three groups, as indicated below.

DAV 721	Quantitative Research Methods in Aviation	3
DAV 725	Research Methods	3
DAV 726	Quantitative and Qualitative Data Analysis	3
DAV 724	Advanced Quantitative Data Analysis – Data Mining and Modeling	3

##### Core Courses — Group B (choose four courses):

DAV 711	Foundations of Aviation	3
DAV 712	Aviation Safety Management Systems	3
DAV 713	The Economic Environment of Aviation	3
DAV 714	The Legal Environment of Aviation	3
DAV 715	Human Factors in Aviation	3
DAV 716	Management of Systems Engineering	3

##### Core Courses — Group C (choose four courses):

DAV 732	Strategies for Organizational Dynamics in Aviation	3
DAV 733	Globalization and the Aviation Environment	3
DAV 734	Operations Research and Decision Making	3
DAV 735	Current Practices and Future Trends in Aviation	3
DAV 736	User-Centered Design in Aviation (Prereq. DAV 715)	3
DAV 737	Topics in Safety Management Systems (Prereq. DAV 712)	3

### Specialisations

Students have the option to pursue studies in one of three specialisations: Aviation Safety and Human Factors, Operations, and Intradisciplinary.

#### Aviation Safety and Human Factors

Students choosing this specialisation will focus on managing risk culture through control of known and yet-to-be discovered techniques and safety applications.

#### COURSE TITLE CREDITS

In addition to all other required coursework, students must take the following five courses in this specialisation:

DAV 712	Aviation Safety Management Systems	3
DAV 715	Human Factors in Aviation	3
DAV 716	Management in Systems Engineering	3
DAV 736	User-Centered Design in Aviation (Prereq. DAV 715)	3
DAV 737	Topics in Safety Management Systems (Prereq. DAV 712)	3

#### Operations

Students choosing this specialisation will focus on the work that emphasises research capabilities in a global marketplace while considering industry trends and innovations.

#### COURSE TITLE CREDITS

In addition to all other required coursework, students must take the following four courses in this specialisation:

DAV 732	Strategies for Organizational Dynamics in Aviation	3
DAV 733	Globalization and the Aviation Environment	3
DAV 734	Operations Research and Decision Making	3
DAV 735	Current Practices & Future Trends in Aviation	3

#### Intradisciplinary

For students with a broader interest in aviation, this specialisation offers a cross-disciplinary approach to aviation where you work with an advisor to build a curriculum appropriate for a student's educational needs.

In addition to completing all other required coursework, students in this specialisation must complete four courses from Group B and four from Group C.



## ADMISSION TO THE PROGRAMME

### Requirements

#### Are you Eligible to Apply?

Applicants must meet ONE of the following two conditions:

- ▲ Possess a Bachelor's and a Master's degree, one of which must be in an aviation-related field such as aeronautical science, aviation technology, aviation management, professional pilot, aviation maintenance, aviation electronics, aviation safety and aeronautics.
- ▲ Possess a Bachelor's and Master's degree in non-aviation disciplines, supplemented by at least one year of full-time-equivalent service in the aviation industry as a professional pilot, maintenance manager, air traffic controller, or other professional aviation position.

Applications must be completed by the deadline published at [asia.erau.edu](http://asia.erau.edu). Review for admission will be made within 60 days of the application deadline. Notification concerning the admission decision will be sent from the Admissions Committee to the applicant.

Once received all applications will be reviewed based upon the following admission standards:

- ▲ GRE General Exam scores are a requirement of the programme and will not be waived. The desired minimum achievement in each section - Verbal and Quantitative - is the 50th percentile or higher.
- ▲ Graduate grade index of 3.5 on a 4.0 scale for all graduate work
- ▲ Master's degree from an accredited university (or equivalent for international universities)
- ▲ Goal statement, writing sample, and fiscal and time responsibility statement indicating strong writing ability and capability to succeed in doctoral level studies
- ▲ Strong letters of recommendation
- ▲ Resume indicating industry experience

#### Affirmative Action

Embry-Riddle Aeronautical University shall actively seek to recruit and admit students promoting the concepts of diversity and ethnicity in the programme.

#### Language Requirements:

Applicants for whom English is not the primary language must:

- ▲ Take the International English Language Testing System (IELTS) and attain a minimum score of 6.0.
- ▲ Attain a minimum score on the Test of English as a Foreign Language (TOEFL) of 600 (paper-based) or 105 (Internet-based).

TOEFL or IELTS scores must be sent directly to Embry-Riddle by the testing agency.

#### Checklist

Once you have submitted your application, you will receive access to the Ernie system. A checklist will indicate which items are still required to complete your application. Those items required are:

- Application Form
- Graduate Record Exam (GRE) Score Report
- Application Fee
- Transcripts from all previous institutions
- Statement of Goals
- Letters of Recommendation (3)
- Writing Sample
- TOEFL Score Report\*
- Statement of Fiscal and Time Responsibility
- Evaluation of Foreign Credentials\*
- Resume

\* for international applicants



# Online Education

At Embry-Riddle Online, earning your degree can be achieved virtually anywhere

## ONLINE TECHNOLOGY FOR THE MODERN STUDENT

In 1971, Embry-Riddle Aeronautical University became one of the first 20 universities in the world to offer distance learning. Lessons and completed coursework were mailed back and forth between the professors and students.

More than 40 years later, Embry-Riddle continues to raise the bar with its award-winning online higher learning methods, technology, faculty, and support staff.

And with these advancements in technology and education methods, Embry-Riddle has grown to three academic colleges — Aeronautics, Arts and Sciences, and Business. Each College offers a variety of degrees including associate to graduate-level classes, certifications, and professional programmes.

With 12 undergraduate and five graduate start terms throughout the year, it's never too late to start on your path to a degree.

Degree Programmes	
▲ Aeronautics	● ● ●
▲ Aviation Business Administration	● ● ●
▲ Aviation Maintenance	● ●
▲ Aviation Security	●
▲ Communication	●
▲ Emergency Services	●
▲ Engineering Fundamentals	●
▲ Engineering Management	● ● ●
▲ Engineering Technology	●
▲ Information Security & Assurance	●
▲ Leadership	●
▲ Logistics & Supply Chain Management	●
▲ Management	●
▲ Management Information Systems	●
▲ Occupational Safety Management	●
▲ Project Management	●
▲ Systems Engineering	●
▲ Technical Management	● ●
▲ Transportation	●
▲ Unmanned Systems	●
● Associate ● Undergraduate ● Graduate	

**Flexible Schedule:** Online programmes feature multiple start times throughout the year, with 12 undergraduate and five graduate terms.

**Experience:** We have decades of experience with new high school graduates, community college transfers, active servicemen and servicewomen, or veterans who need flexibility for their work or family environment. Online provides all of these options.

**Your Own Plan:** Personalised degree maps show how you can graduate on time, regardless of your other obligations or location

### EagleVision

In 2007, Embry-Riddle Aeronautical University launched EagleVision, a virtual classroom that combines Web video conferencing and a learning management system to amplify the benefits of synchronous learning.

EagleVision allows for real-time collaboration in a student-centered learning environment. With technology and keeping academic quality at the forefront, we are able to offer three course delivery modes — EagleVision Classroom (between classrooms), EagleVision Home (faculty and students at home), and a blend of Classroom or Home.

EagleVision Classroom includes scheduled online times and real-time interaction with other students and professors.

EagleVision Home offers all of the same benefits of EagleVision Classroom, but from the comfort of your home, office, or anywhere you have a computer and the internet.

### Canvas

Embry-Riddle upgraded its Learning Management System to Canvas, an educational platform designed with the online teaching and learning experience in mind.

Canvas is a cloud-based system that is viewable on any web browser, computer or mobile, and for engagement and collaboration through video, audio, integrated media recorder, text, and discussion boards. Canvas also offers an App as another tool to stay connected.

Canvas' SpeedGrader system gives faculty the ability to spend less time doing administrative work, and more time engaging the students. It converts documents automatically, so teachers can preview and annotate student submissions without having to download or upload files. The inline annotation tool enables highlighting, strikeout, and freehand drawing.

Staying connected to your courses, faculty, and other students is made easy by Canvas. The learning management system allows you the freedom to select receive notifications and course updates through email, text message, Facebook, and Twitter.



### Virtual Crash Lab

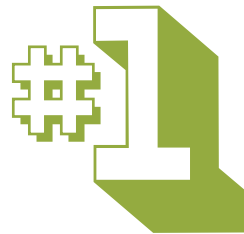
In May 2014, Embry-Riddle launched its Virtual Crash Lab, another innovation by the University to enhance online students' experiences.

Embry-Riddle faculty and staff, working with vendors Pinnacle Solutions and Unity, integrated the gamification of education into the College of Aeronautics curriculum.

Within this environment, students will be able to examine the aircraft accident scene, document evidence, and even interview survivors. This lab will enhance the learning environment for several of our safety courses.

During the exercise, students gather and submit data that satisfy certain accident investigation criteria: survival factors, human factors, aircraft structures, aircraft systems, operations and maintenance. Faculty can then assess student knowledge and comprehension by examining the evidence collected and explanation of findings.

The virtual crash lab is yet another innovative way Embry-Riddle is using technology to enhance the learning experience.



**Best Online Colleges and Universities**

Ranked No. 1 by College Choice 2015

**Most Technologically Savvy Online Schools**

Ranked No. 1 by Online School Center 2014



**60% of Online Learners Are Undergraduate**

Aurion Learning

“The virtual crash lab provides a unique, stimulating and enjoyable environment for students to practice accident investigation techniques and for faculty to evaluate students on their understanding and application of investigative technologies”

Associate Professor Dr. Katherine Moran







**ASIA**

75 Bukit Timah Road  
#02-01/02 Boon Siew Building  
Singapore 229833  
+65-6933-9580  
asia@erau.edu  
asia.erau.edu

**WORLDWIDE  
HEADQUARTERS**

600 S. Clyde Morris Blvd.  
Daytona Beach, Florida 32114  
United States of America  
+1-386-226-6910  
worldwide@erau.edu  
worldwide.erau.edu

**FLORIDA  
RESIDENTIAL CAMPUS**

600 S. Clyde Morris Blvd.  
Daytona Beach, Florida 32114  
United States of America  
+1-386-226-6100  
dbadmit@erau.edu  
daytonabeach.erau.edu

**ARIZONA  
RESIDENTIAL CAMPUS**

3700 Willow Creek Road  
Prescott, Arizona 86301  
United States of America  
+1-928-777-6600  
pradmit@erau.edu  
prescott.erau.edu

Scan to visit  
[ASIA.ERAU.EDU](http://ASIA.ERAU.EDU)

